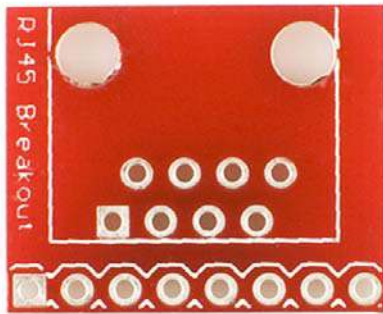


SparkFun RJ45 Breakout

BOB-00716 ROHS ✓

★★★★★ 3



© images are CC BY-NC-SA 3.0

3D Download: STL, Blender

Description: RJ45 connectors are the kind that are used for Ethernet jacks, but they make great general purpose connectors when you need a lot of conductors. This is a small PCB that brings out the pins of the RJ45 connector to an in-line 0.1" footprint. Use with break-away headers for breadboarding or create your own RJ45 cable. Check the related items for Ethernet cable and connectors to go with it!

We used these connectors extensively in the Sound Squid demo!

Note: This is the **PCB only** - You can get the RJ45 connector in the related items below!

Dimensions: 0.7x0.8"