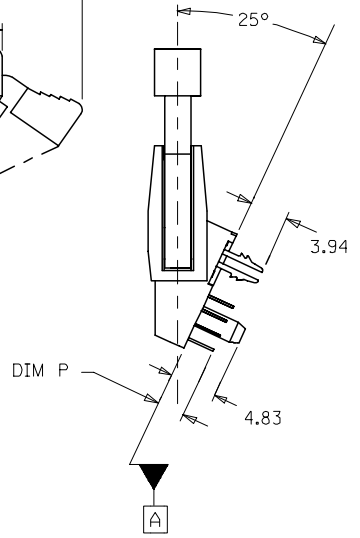
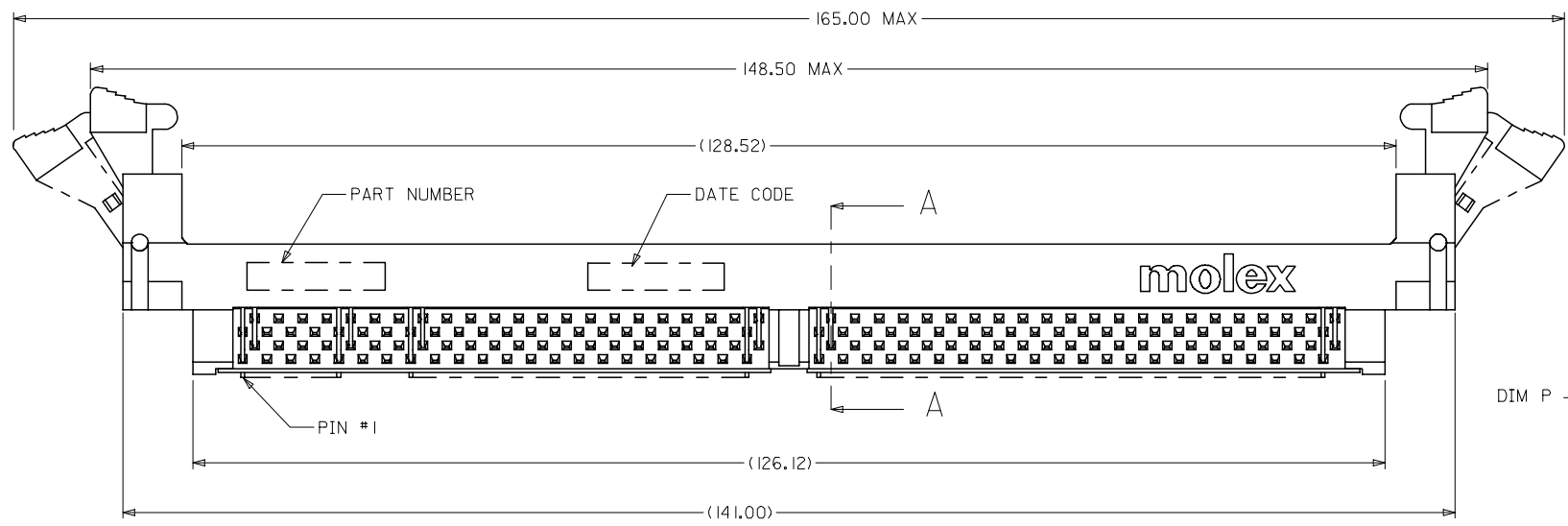
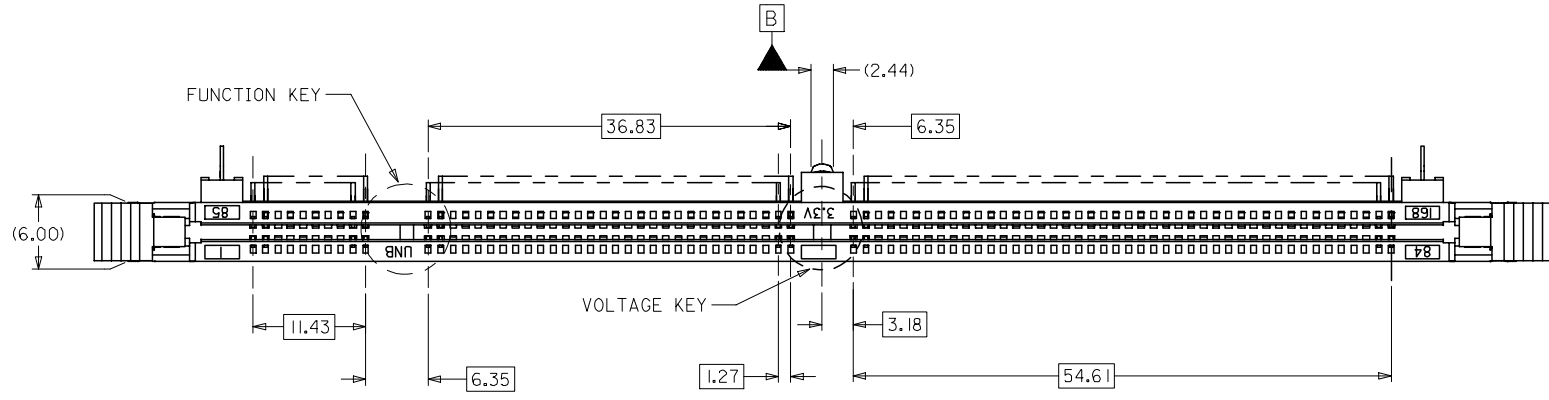


10 9 8 7 6 5 4 3 2 1



- NOTES:
- MATERIALS: HOUSING - LCP, GLASS FILLED, UL 94V-0  
COLOR: BLACK  
LATCH - HIGH TEMP NYLON, GLASS FILLED, UL94V-0  
COLOR: BEIGE  
TERMINAL AND FORKLOCK - COPPER ALLOY
  - FINISHES: CONTACT AREA: SEE TABLE ON SHEET 4  
SOLDER TAILS: 2.54UM/100UM MIN, TIN
  - PRODUCT SPECIFICATIONS: PS-87587-007 FOR PERFORMANCE SPECIFICATIONS.
  - DATE CODE SHALL BE MARKED LEGIBLY AS SHOWN: XX XXX  
YEAR DAY
  - PART NUMBER SHALL BE MARKED LEGIBLY AS SHOWN: 87587-0XXX  
REFER TO THE TABLE

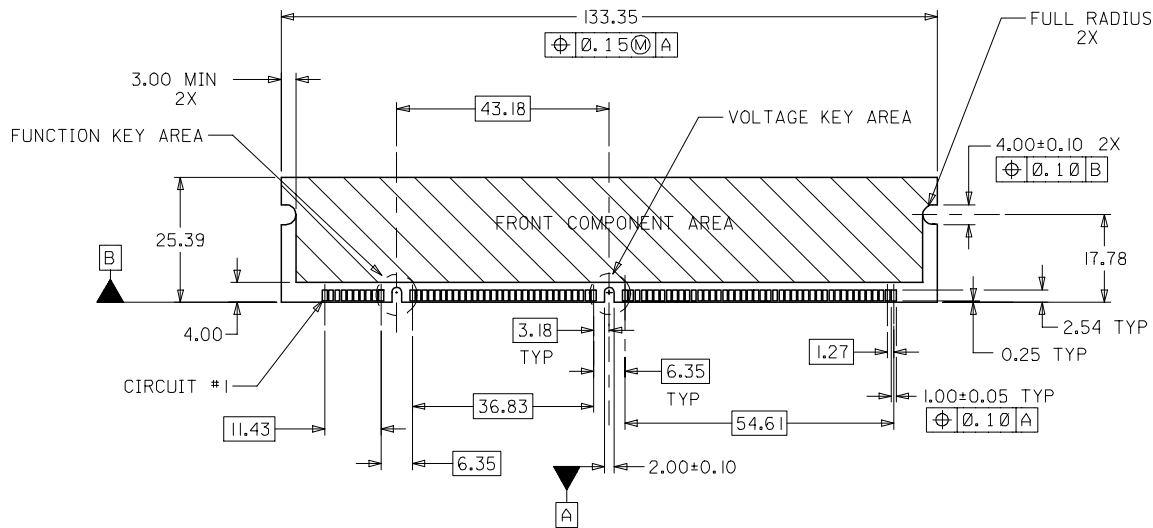
|   |            |                               |             |
|---|------------|-------------------------------|-------------|
| OBS TIN/LEAD P/N<br>EC NO: S2006-0734<br>DRWN:MLONG<br>CHKD:HO<br>APPR:GGLLEE | 2006/02/27 | QUALITY SYMBOLS<br>▽=0<br>▽=0 | DESCRIPTION |
|   | 2006/02/28 |                               |             |
| D   | REV        |                               |             |

| GENERAL TOLERANCES (UNLESS SPECIFIED)                   |       |
|---|-------|
| mm  | INCH  |
| 4 PLACES ± ---  | ± --- |
| 3 PLACES ± ---  | ± --- |
| 2 PLACES ± 0.25   | ± --- |
| 1 PLACE ± ---   | ± --- |
| ANGULAR ± 5 °   |       |
| DRAFT WHERE APPLICABLE<br>MUST REMAIN WITHIN DIMENSIONS |       |

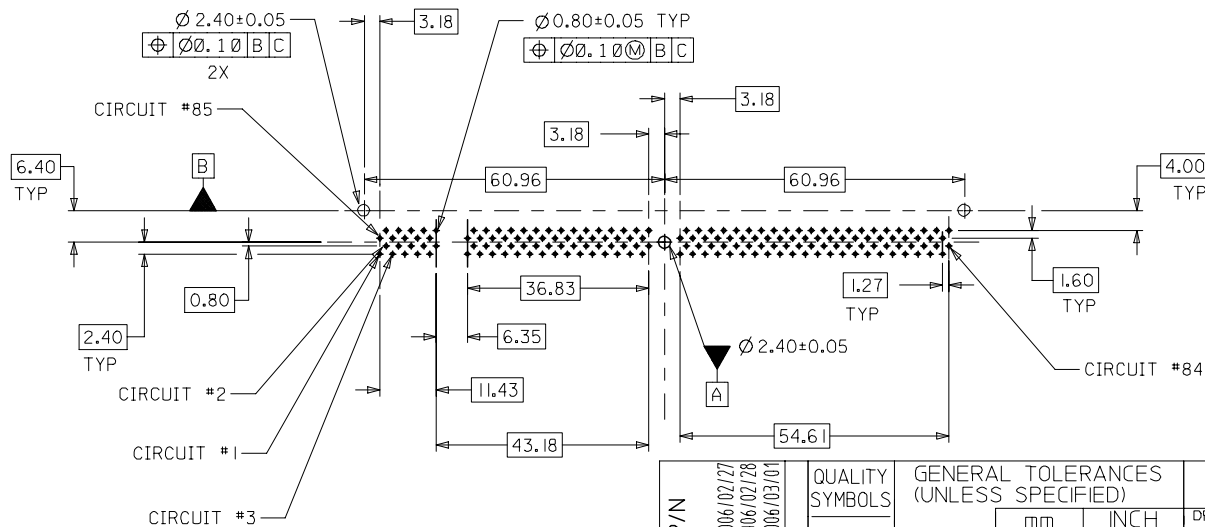
| DIMENSION STYLE<br>MM ONLY |            |
|----------------------------|------------|
| DRAWN BY                   | DATE       |
| LPLIM                      | 1999/03/19 |
| CHECKED BY                 | DATE       |
| KCLING                     | 1999/06/14 |
| APPROVED BY                | DATE       |
| SKTOH                      | 1999/06/15 |
| MATERIAL NO.               |            |
| SEE TABLE                  |            |

| SCALE   | DESIGN UNITS | THIRD ANGLE PROJECTION |
|---|--------------|------------------------|
| NTS   | METRIC       | ☉                      |
| DIMM, 1.27MM PITCH<br>168 CKTS, MULTI-KEY<br>25 DEG   |              |                        |
| molex MOLEX INCORPORATED  |              |                        |
| DOCUMENT NO.  | SHEET NO.    |                        |
| SD-87587-001  | 1 OF 4       |                        |
| THIS DRAWING CONTAINS INFORMATION THAT IS PROPRIETARY TO MOLEX INCORPORATED AND SHOULD NOT BE USED WITHOUT WRITTEN PERMISSION |              |                        |

9 8 7 6 5 4 3 2 1

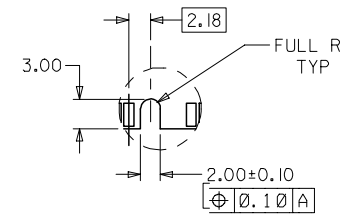


RECOMMENDED MODULE LAYOUT  
(PER JEDEC STANDARD MO-161, 168 CKT. 3.3V)

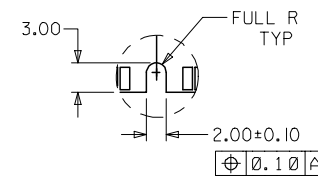


RECOMMENDED  
P.C. BOARD HOLE PATTERN  
(CONNECTOR SIDE)

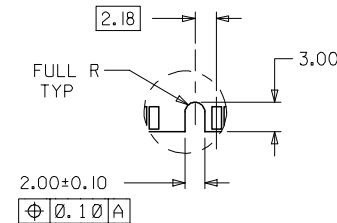
FUNCTION KEY AREA OPTIONS  
(REFER ALSO TO TABLE ON SHT. 3)



OFFSET LEFT KEY



CENTERED KEY



OFFSET RIGHT KEY

|        |              |            |
|--------|--------------|------------|
| OBS    | TIN/LEAD P/N | 2006/02/27 |
| EC NO: | S2006-0734   | 2006/02/28 |
| DRWN:  | MJL          | 2006/02/28 |
| CHKD:  | HO           | 2006/03/01 |
| APPR:  | GLEE         |            |
| REV    | DESCRIPTION  |            |

|                 |     |
|-----------------|-----|
| QUALITY SYMBOLS | ▽=0 |
|                 | ▽=0 |

|  |        |
|--|--------|
| GENERAL TOLERANCES (UNLESS SPECIFIED)                |        |
|  | mm     |
|  | INCH   |
| 4 PLACES   | ± ---  |
| 3 PLACES   | ± ---  |
| 2 PLACES   | ± 0.25 |
| 1 PLACE  | ± ---  |
| ANGULAR ± 5 °  |        |
| DRAFT WHERE APPLICABLE MUST REMAIN WITHIN DIMENSIONS |        |

|                 |            |
|-----------------|------------|
| DIMENSION STYLE |            |
| MM ONLY         |            |
| DRAWN BY        | DATE       |
| PL IM           | 1999/03/19 |
| CHECKED BY      | DATE       |
| KCL ING         | 1999/06/14 |
| APPROVED BY     | DATE       |
| SKTOH           | 1999/06/15 |
| MATERIAL NO.    |            |
| SEE TABLE       |            |

|                     |              |                        |
|---------------------|--------------|------------------------|
| SCALE               | DESIGN UNITS | THIRD ANGLE PROJECTION |
| NTS                 | METRIC       |                        |
| TITLE               |              |                        |
| DIMM, 1.27MM PITCH  |              |                        |
| 168 CKTS, MULTI-KEY |              |                        |
| 25 DEG              |              |                        |
| MOLEX INCORPORATED  |              |                        |
| DOCUMENT NO.        | SHEET NO.    |                        |
| SD-87587-001        | 2 OF 4       |                        |

10 9 8 7 6 5 4 3 2 1

F

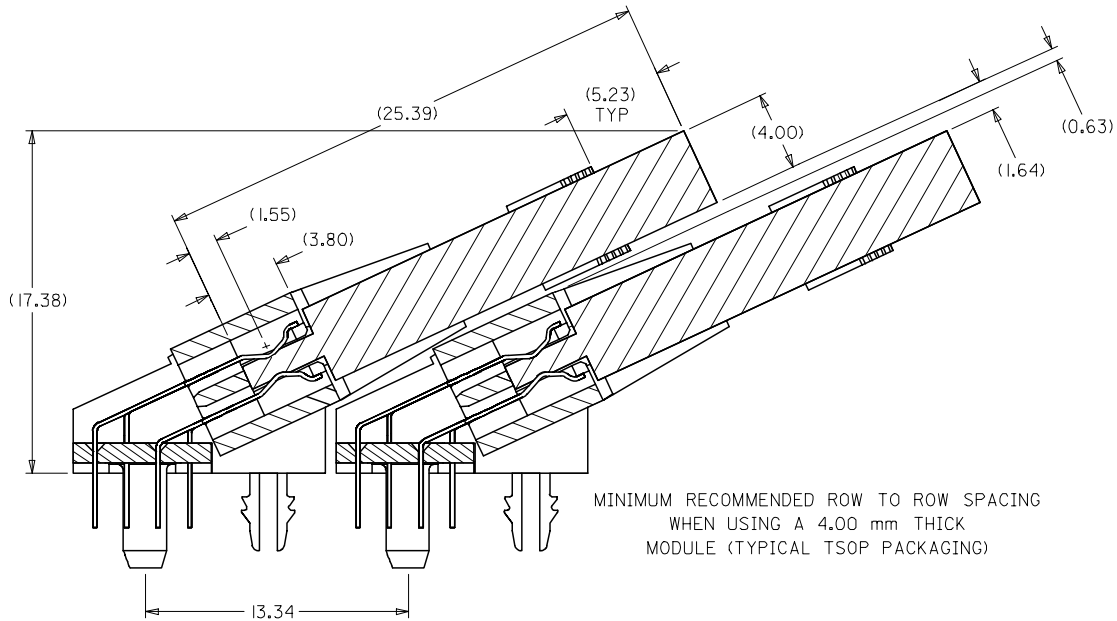
E

D

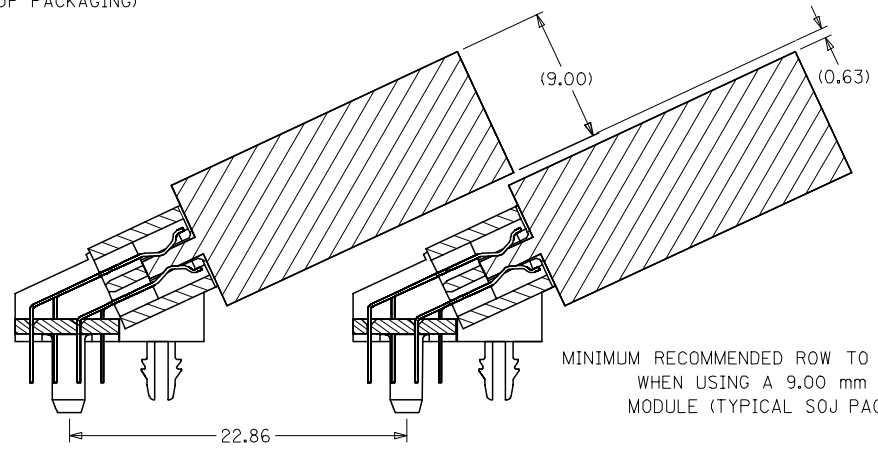
C

B

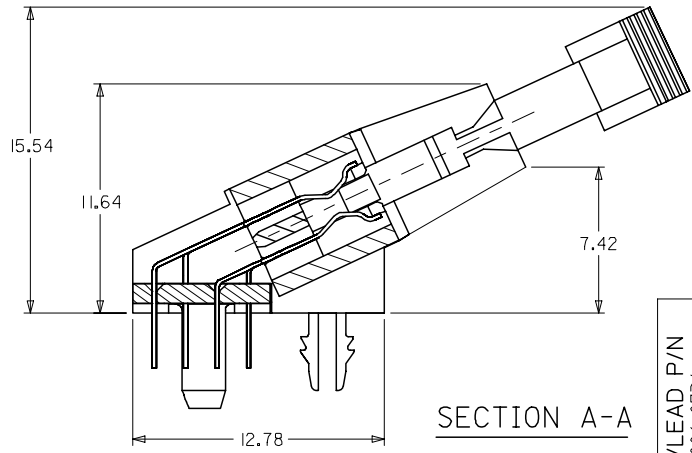
A



MINIMUM RECOMMENDED ROW TO ROW SPACING  
WHEN USING A 4.00 mm THICK  
MODULE (TYPICAL TSOP PACKAGING)



MINIMUM RECOMMENDED ROW TO ROW SPACING  
WHEN USING A 9.00 mm THICK  
MODULE (TYPICAL SOJ PACKAGING)



SECTION A-A

|        |                   |
|--------|-------------------|
| OBS    | TIN/LEAD P/N      |
| EC NO: | S2006-0734        |
| DRWN:  | M:LONG 2006/02/27 |
| CHKD:  | I:HO 2006/02/28   |
| APPR:  | G:GLEE 2006/03/01 |
| REV    | D                 |

|                 |             |
|-----------------|-------------|
| QUALITY SYMBOLS | DESCRIPTION |
| ▽=0             |             |
| ▽=0             |             |

|  |        |       |
|--|--------|-------|
| GENERAL TOLERANCES (UNLESS SPECIFIED)                | mm     | INCH  |
| 4 PLACES   | ± ---  | ± --- |
| 3 PLACES   | ± ---  | ± --- |
| 2 PLACES   | ± 0.25 | ± --- |
| 1 PLACE  | ± ---  | ± --- |
| ANGULAR ± 5 °  |        |       |
| DRAFT WHERE APPLICABLE MUST REMAIN WITHIN DIMENSIONS |        |       |

|                 |            |   |              |                        |
|-----------------|------------|---|--------------|------------------------|
| DIMENSION STYLE |            | SCALE   | DESIGN UNITS | THIRD ANGLE PROJECTION |
| MM ONLY         |            | NTS   | METRIC       |                        |
| DRAWN BY        | DATE       | TITLE   |              |                        |
| LPL IM          | 1999/03/19 | DIMM, 1.27MM PITCH<br>168 CKTS, MULTI-KEY<br>25 DEG |              |                        |
| CHECKED BY      | DATE       |   |              |                        |
| KCL ING         | 1999/06/14 |   |              |                        |
| APPROVED BY     | DATE       | MOLEX INCORPORATED                                  |              |                        |
| SKT0H           | 1999/06/15 | DOCUMENT NO. SD-87587-001                           |              |                        |
| MATERIAL NO.    |            | DOCUMENT NO.  |              | SHEET NO.              |
|                 |            | SD-87587-001  |              | 3 OF 4                 |

|              |  |              |   |           |
|--------------|--|--------------|---|-----------|
| DRAWN BY     |  | DATE         | TITLE   |           |
| LPL IM       |  | 1999/03/19   | DIMM, 1.27MM PITCH<br>168 CKTS, MULTI-KEY<br>25 DEG |           |
| CHECKED BY   |  | DATE         |   |           |
| KCL ING      |  | 1999/06/14   |   |           |
| APPROVED BY  |  | DATE         | MOLEX INCORPORATED                                  |           |
| SKT0H        |  | 1999/06/15   | DOCUMENT NO. SD-87587-001                           |           |
| MATERIAL NO. |  | DOCUMENT NO. |   | SHEET NO. |
|              |  | SD-87587-001 |   | 3 OF 4    |

9 8 7 6 5 4 3 2 1

10

9

8

7

6

5

4

3

2

1

F

E

D

C

B

A

| PART NUMBER | FUNCTION KEY | DATUM VOLTAGE KEY | TAIL LENGTH P±0.25 | FINISHES: CONTACT AREA  |
|-------------|--------------|-------------------|--------------------|---|
| 87587-2048  | LEFT         | CENTER (3.3V)     | 2.79               | SELECTIVE GOLD<br>0.38µM/15µ" MIN.<br>GOLD OVER<br>1.27µM/50µ" MIN.<br>NICKEL |
| 87587-2049  | CENTER       |                   | ↓                  |   |
| 87587-2050  | RIGHT        |                   | ↓                  |   |
| 87587-2057  | LEFT         |                   | 3.18               |   |
| 87587-2058  | CENTER       |                   | ↓                  |   |
| 87587-2059  | RIGHT        |                   | ↓                  | SELECTIVE GOLD<br>0.76µM/30µ" MIN.<br>GOLD OVER<br>1.27µM/50µ" MIN.<br>NICKEL |
| 87587-2148  | LEFT         |                   | 2.79               |   |
| 87587-2149  | CENTER       |                   | ↓                  |   |
| 87587-2150  | RIGHT        |                   | ↓                  |   |
| 87587-2157  | LEFT         |                   | 3.18               |   |
| 87587-2158  | CENTER       |                   | ↓                  |   |
| 87587-2159  | RIGHT        |                   | ↓                  |   |

| OBS TIN/LEAD P/N<br>EC NO: S2006-0734<br>DRWN:MLONG<br>CHKD:HO<br>APPR:GJLEE | 2006/02/27<br>2006/02/28<br>2006/03/01 | DESCRIPTION<br>REV                                  | QUALITY SYMBOLS   | GENERAL TOLERANCES (UNLESS SPECIFIED)  | DIMENSION STYLE       | SCALE   | DESIGN UNITS        | THIRD ANGLE PROJECTION |            |       |   |         |            |             |        |                    |         |            |       |         |     |        |  |
|--|--|---|---|--|-----------------------|---|---------------------|------------------------|------------|-------|---|---------|------------|-------------|--------|--------------------|---------|------------|-------|---------|-----|--------|--|
|  |  |   | =0<br>=0.25   | <table border="1"> <thead> <tr> <th></th> <th>mm</th> <th>INCH</th> </tr> </thead> <tbody> <tr> <td>4 PLACES</td> <td>± ---</td> <td>± ---</td> </tr> <tr> <td>3 PLACES</td> <td>± ---</td> <td>± ---</td> </tr> <tr> <td>2 PLACES</td> <td>± 0.25</td> <td>± ---</td> </tr> <tr> <td>1 PLACE</td> <td>± ---</td> <td>± ---</td> </tr> </tbody> </table> |                       | mm  | INCH                | 4 PLACES               | ± ---      | ± --- | 3 PLACES  | ± ---   | ± ---      | 2 PLACES    | ± 0.25 | ± ---              | 1 PLACE | ± ---      | ± --- | MM ONLY | NTS | METRIC |  |
|  |  |   |   | mm   | INCH                  |   |                     |                        |            |       |   |         |            |             |        |                    |         |            |       |         |     |        |  |
|  |  |   | 4 PLACES  | ± ---  | ± ---                 |   |                     |                        |            |       |   |         |            |             |        |                    |         |            |       |         |     |        |  |
|  |  |   | 3 PLACES  | ± ---  | ± ---                 |   |                     |                        |            |       |   |         |            |             |        |                    |         |            |       |         |     |        |  |
| 2 PLACES   | ± 0.25                                 | ± ---   |   |  |                       |   |                     |                        |            |       |   |         |            |             |        |                    |         |            |       |         |     |        |  |
| 1 PLACE  | ± ---                                  | ± ---   |   |  |                       |   |                     |                        |            |       |   |         |            |             |        |                    |         |            |       |         |     |        |  |
|  |  |   | <table border="1"> <tr> <td>DRAWN BY</td> <td>DATE</td> <td rowspan="2">TITLE</td> </tr> <tr> <td>LPL IM</td> <td>1999/03/19</td> </tr> <tr> <td>CHECKED BY</td> <td>DATE</td> <td rowspan="2">           DIMM, 1.27MM PITCH<br/>           168 CKTS, MULTI-KEY<br/>           25 DEG         </td> </tr> <tr> <td>KCL ING</td> <td>1999/06/14</td> </tr> <tr> <td>APPROVED BY</td> <td>DATE</td> <td rowspan="2">  MOLEX INCORPORATED         </td> </tr> <tr> <td>SKTOH</td> <td>1999/06/15</td> </tr> </table> | DRAWN BY   | DATE                  | TITLE   | LPL IM              | 1999/03/19             | CHECKED BY | DATE  | DIMM, 1.27MM PITCH<br>168 CKTS, MULTI-KEY<br>25 DEG | KCL ING | 1999/06/14 | APPROVED BY | DATE   | MOLEX INCORPORATED | SKTOH   | 1999/06/15 |       |         |     |        |  |
| DRAWN BY   | DATE                                   | TITLE   |   |  |                       |   |                     |                        |            |       |   |         |            |             |        |                    |         |            |       |         |     |        |  |
| LPL IM   | 1999/03/19                             |   |   |  |                       |   |                     |                        |            |       |   |         |            |             |        |                    |         |            |       |         |     |        |  |
| CHECKED BY   | DATE                                   | DIMM, 1.27MM PITCH<br>168 CKTS, MULTI-KEY<br>25 DEG |   |  |                       |   |                     |                        |            |       |   |         |            |             |        |                    |         |            |       |         |     |        |  |
| KCL ING  | 1999/06/14                             |   |   |  |                       |   |                     |                        |            |       |   |         |            |             |        |                    |         |            |       |         |     |        |  |
| APPROVED BY  | DATE                                   | MOLEX INCORPORATED                                  |   |  |                       |   |                     |                        |            |       |   |         |            |             |        |                    |         |            |       |         |     |        |  |
| SKTOH  | 1999/06/15                             |   |   |  |                       |   |                     |                        |            |       |   |         |            |             |        |                    |         |            |       |         |     |        |  |
|  |  |   | DRAFT WHERE APPLICABLE<br>MUST REMAIN<br>WITHIN DIMENSIONS  | SEE TABLE  | MATERIAL NO.<br>SKTOH | DOCUMENT NO.<br>SD-87587-001  | SHEET NO.<br>4 OF 4 |                        |            |       |   |         |            |             |        |                    |         |            |       |         |     |        |  |
|  |  |   |   |  | SIZE<br>              | THIS DRAWING CONTAINS INFORMATION THAT IS PROPRIETARY TO MOLEX INCORPORATED AND SHOULD NOT BE USED WITHOUT WRITTEN PERMISSION |                     |                        |            |       |   |         |            |             |        |                    |         |            |       |         |     |        |  |

9

8

7

6

5

4

3

2

1