

4

3

2

1

THIS DRAWING IS UNPUBLISHED.

RELEASED FOR PUBLICATION

© COPYRIGHT

ALL RIGHTS RESERVED.

LOC DIST

REVISIONS

P	LTR	DESCRIPTION	DATE	DWN	APVD
	D1	ECR-13-004734	15MAR2013	XZ	LZ

REPLACED BY OCEAN STYLE APPLICATOR PART NUMBER 2151300-1

FOR REPLACEMENT PARTS FOR APPLICATOR 1528506
REFER TO ADDITIONAL PAGE(S). SPARE PARTS KIT (IF LISTED)
WILL REMAIN AVAILABLE.

THE REPLACEMENT OCEAN STYLE APPLICATOR HAS THE
SAME TERMINATOR/PRESS INTERFACE AS APPLICATOR
1528506

Dimensioning and tolerancing per ASME Y14.5M-2009


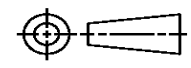
B

A

Dimensioning and tolerancing per ASME Y14.5M-2009

B

A

THIS DRAWING IS A CONTROLLED DOCUMENT.		DWN X. ZHAO	 TE Connectivity			
DIMENSIONS:		CHK L. ZHANG				
		APVD L. ZHANG	NAME			
		PRODUCT SPEC	FINE ADJ SIDE FD HD-I APPL			
TOLERANCES UNLESS OTHERWISE SPECIFIED:		APPLICATION SPEC	SIZE	CAGE CODE	DRAWING NO	RESTRICTED TO
0 PLC ± 1 PLC ± 2 PLC ± 3 PLC ± 4 PLC ± ANGLES ±		WEIGHT	A3		©- 1528506	
MATERIAL		FINISH	SCALE	SHEET 1 OF 2	REV D1	

DRAWING MADE IN THIRD ANGLE PROJECTION

1528506 1528506

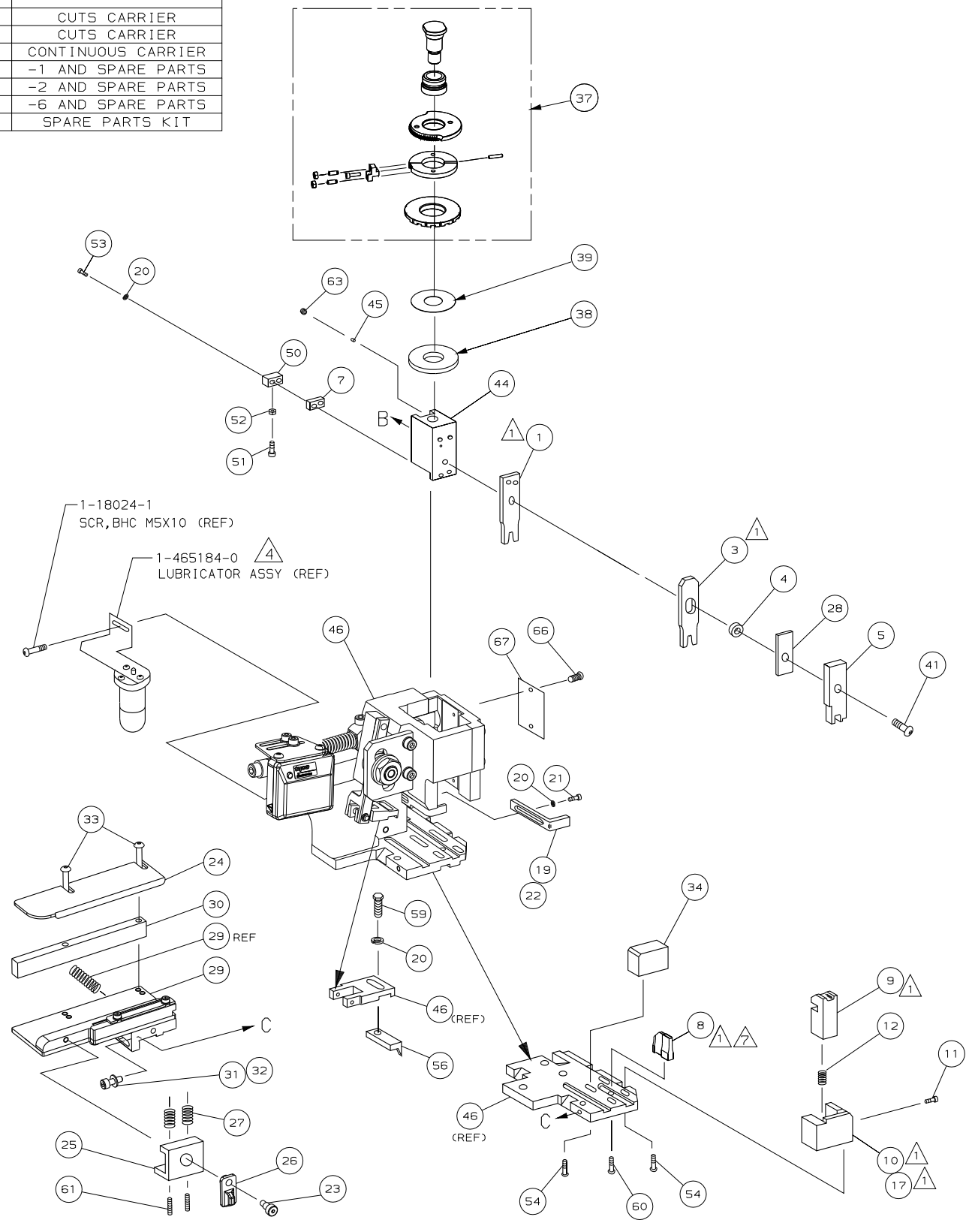
/home/us024474/tecmod

PART NUMBER	REV	FIRST USED	TERMINATOR	FEED TYPE	DESCRIPTION
1528506-1	D		LEADMAKER	MECH POST FEED	CUTS CARRIER
1528506-2	D		BENCH	MECH PRE FEED	CUTS CARRIER
1528506-6	D		LEADMAKER	MECH POST FEED	CONTINUOUS CARRIER
7-1528506-1	D		LEADMAKER	MECH POST FEED	-1 AND SPARE PARTS
7-1528506-2	D		BENCH	MECH PRE FEED	-2 AND SPARE PARTS
7-1528506-6	D		LEADMAKER	MECH POST FEED	-6 AND SPARE PARTS
7-1528506-7	A		-	-	SPARE PARTS KIT

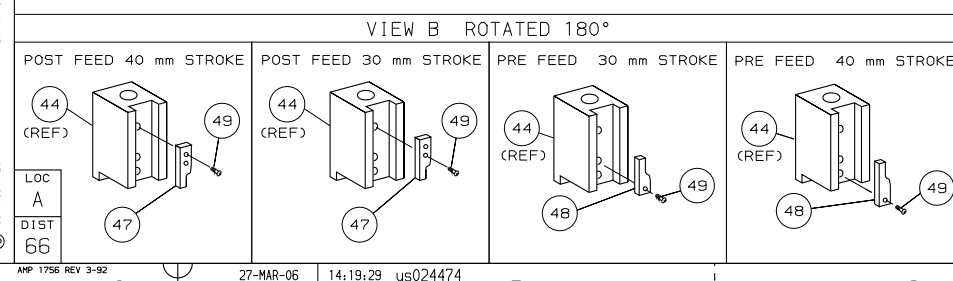
CRIMP DATA AMP TERMINAL AMP CRIMP SPECS			
TERMINAL NAME: MCP 1.2MM CONTACT ASSEMBLY			
CRIMP	SIZE	TYPE	RANGE
WIRE	1.40 [.055 IN]	F	0.50-0.75mm ² or 20AWG
INSUL	1.83 [.072 IN]	SPECIAL	1.40-1.90 [.055-.075 IN]
WIRE STRIP LENGTH	APPL INSTRUCTION 408-8322 & 408-8490		
TERMINAL	-	-	FEED
APPL SPEC	114-18464	-	8.00 [.315 IN]

TERMINALS APPLIED				
1418760	-	-	-	-
-	-	-	-	-
-	-	-	-	-
-	-	-	-	-
-	-	-	-	-
-	-	-	-	-
-	-	-	-	-
-	-	-	-	-
-	-	-	-	-
-	-	-	-	-

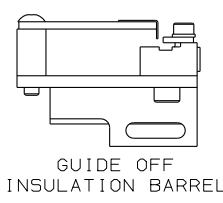
WIRE SIZE mm ² AWG	CRIMP HEIGHT *	REF SETTING
0.75mm ²	1.05 ±0.03 [.041 ±.001 IN]	B 5
0.50mm ²	0.93 ±0.03 [.037 ±.001 IN]	C 4
20 AWG	0.93 ±0.03 [.037 ±.001 IN]	C 4



- RECOMMENDED SPARE PARTS.
- GREASE RAM, CAM, CAM FOLLOWER AND FEED ROD LIGHTLY.
 - LUBRICATE DAILY PER THE APPLICATOR INSTRUCTION SHEET SUPPLIED WITH THE APPLICATOR.
 - CERTAIN TERMINALS REQUIRE LUBRICATION. REFER TO THE APPLICATOR INSTRUCTION SHEET FOR MORE INFORMATION.
 - THIS APPLICATOR HAS BEEN DESIGNED TO APPLY WIRES WITH THIN-WALL (FLR) INSULATION.
 - MAXIMUM INSULATION CRIMP WIDTH 2.05mm & MAXIMUM INSULATION CRIMP HEIGHT 2.05mm. SEE APPLICATION SPECIFICATION TO CLARIFY.
 - DUE TO THE DEMANDS OF APPLICATION SPEC 114-18464 IT IS IMPORTANT, IF THE ANVIL IS MOVED OR REPLACED, THAT IT IS BIASED TOWARDS THE OPERATOR'S POSITION AS FAR AS POSSIBLE WHEN RE-SECURING TO THE BASE PLATE.



*** WARNING:**
ON INSTALLATION, SET WIRE DISC TO LARGEST WIRE SIZE SETTING. USE OF SETTINGS BELOW MIN REQUIRED CRIMP HEIGHT SETTING WILL CAUSE DAMAGE TO CRIMP TOOLING.



TOOLING APPROVED BY GB GATD & TERMINAL PRODUCT ENGINEERING GERMANY.

QTY	REQD	PER	ASSY	PART NO	DESCRIPTION	ITEM NO
-	1	1	1	1	1528506	PRINT, APPLICATOR LOG SHEET
-	1	1	1	1	1338705-3	DOCUMENTATION PACKAGE
-	1	1	1	1	461264-5	PLATE, IDENTIFICATION
-	2	2	2	2	21017-2	SCR, DRIVE (#2X.19) ID PLATE
-	1	1	1	1	3-18031-0	SCR, SKT SET (M6X6) RAM
-	2	2	2	2	2-18032-5	SCR, SKT SET (M5X20) DRAG
-	1	1	1	1	18024-7	SCR, BHC (M4X10) ANVIL
-	1	1	1	1	5-18022-2	SCR, HEX (M4X8) FEED FINGER
-	1	1	1	1	1338685-1	PAWL, FEED
-	4	4	4	4	18024-8	SCR, BHC (M4X12) SHEAR HOLDER
-	2	2	2	2	1-18023-3	SCR, SHC (M4X16) TERM HLD DWN
-	1	1	1	1	18030-1	NUT, HEX (M3) HOLD DOWN
-	1	1	1	1	811242-5	BUMPER, HOLDDOWN
-	1	1	1	1	690753-2	SPACER, TONKER
-	1	1	1	1	18024-3	SCR, BHC (M3X10) CAM
-	1	1	1	1	1338675-1	CAM, PRE FEED 30 & 40 mm ST
-	1	1	1	1	1338676-1	CAM, POST FEED 30 & 40 mm ST
-	1	1	1	1	1320999-3	APPLICATOR BASIC SUBASSY
-	1	1	1	1	690191-1	PLUG, NYLON
-	1	1	1	1	1338660-1	RAM
-	1	1	1	1	2-18024-6	SCR, BHC (M8X25) RAM
-	1	1	1	1	690125-1	SHIM SUBASSY
-	1	1	1	1	469367-8	SPACER, FINE ADJUST
-	1	1	1	1	879103-3	FINE ADJUST HEAD SUBASSY
-	1	1	1	1	1320934-6	SUPPORT, TERMINAL
-	2	2	2	2	1-18024-0	SCR, BHC (M4X20) STRIP GUIDE
-	1	1	1	1	18027-2	WASHER, FLAT (M4)
-	1	1	1	1	1-18023-2	SCR, SKT CAP (M4X12) MOUNT BLOCK
-	1	1	1	1	1-1320908-5	SPACER, STRIP GUIDE
-	1	1	1	1	1633073-2	STRIP GUIDE PLATE ASSY
-	1	1	1	1	455888-6	SPACER, FRONT SHEAR DEP
-	2	2	2	2	1-22284-0	SPRING, DRAG
-	1	1	1	1	356835-1	LEVER, DRAG RELEASE
-	1	1	1	1	240792-1	DRAG, TERMINAL
-	1	1	1	1	1320928-5	PLATE, STRIP GUIDE
-	1	1	1	1	980371-4	SCR, SHC 5HLD
-	1	1	1	1	690472-2	STRIPPER
-	1	1	1	1	1-18023-1	SCR, SHC (M4X10) STRIPPER
-	4	4	4	4	18025-2	WASHER, LOCK (M4) STRIPPER
-	1	1	1	1	1424364-1	STRIPPER
-	1	1	1	1	1338684-1	HOLDER, SHEAR, FRONT (NO-CUT)
-	1	1	1	1	5-22280-0	SPRING, SHEAR
-	1	1	1	1	356885-4	STOP, SHEAR
-	1	1	1	1	1320921-1	HOLDER, SHEAR, FRONT (CUT)
-	1	1	1	1	1-879745-2	SHEAR, FLOAT (FRONT)
1	2	2	2	1	1333231-5	ANVIL
-	1	1	1	1	5-240641-0	SPACER, DEPRESSOR (REAR)
-	1	1	1	1	562605-2	DEPRESSOR, SHEAR (FRONT)
-	1	1	1	1	4-238011-2	SPACER, BLOCK CRIMPER
1	2	2	2	1	1752766-1	CRIMPER, INSULATION
1	2	2	2	1	3-456402-3	CRIMPER, WIRE

AMP 1756 REV 3-92 27-MAR-06 14:19:29 us024474 7 6 5 4 3

*** WARNING:**
ON INSTALLATION, SET WIRE DISC TO LARGEST WIRE SIZE SETTING. USE OF SETTINGS BELOW MIN REQUIRED CRIMP HEIGHT SETTING WILL CAUSE DAMAGE TO CRIMP TOOLING.

TOOLING APPROVED BY GB GATD & TERMINAL PRODUCT ENGINEERING GERMANY.

QTY REQD PER ASSY

REVISION OF EACH ASSY NO (WHEN BLANK, USE DWG REVISION)

REV	DATE	DESCRIPTION
1	200707	...
2	200707	...
3	200707	...
4	200707	...
5	200707	...
6	200707	...
7	200707	...
8	200707	...

DR: L.LOFTHOUSE, APP: F.BACKHURST, REL: L.LOFTHOUSE, NAME: FINE ADJ SIDE FD HD-I APPL, SCALE: 1:1, MATL: HT TR, FIN: -

AMP Tyco Electronics Harrisburg, PA 17105-3608

SCALE: 1:1, DWG NO: 1528506, SHEET 1 OF 1, REV D

CUSTOMER AND ASSEMBLY DRAWING