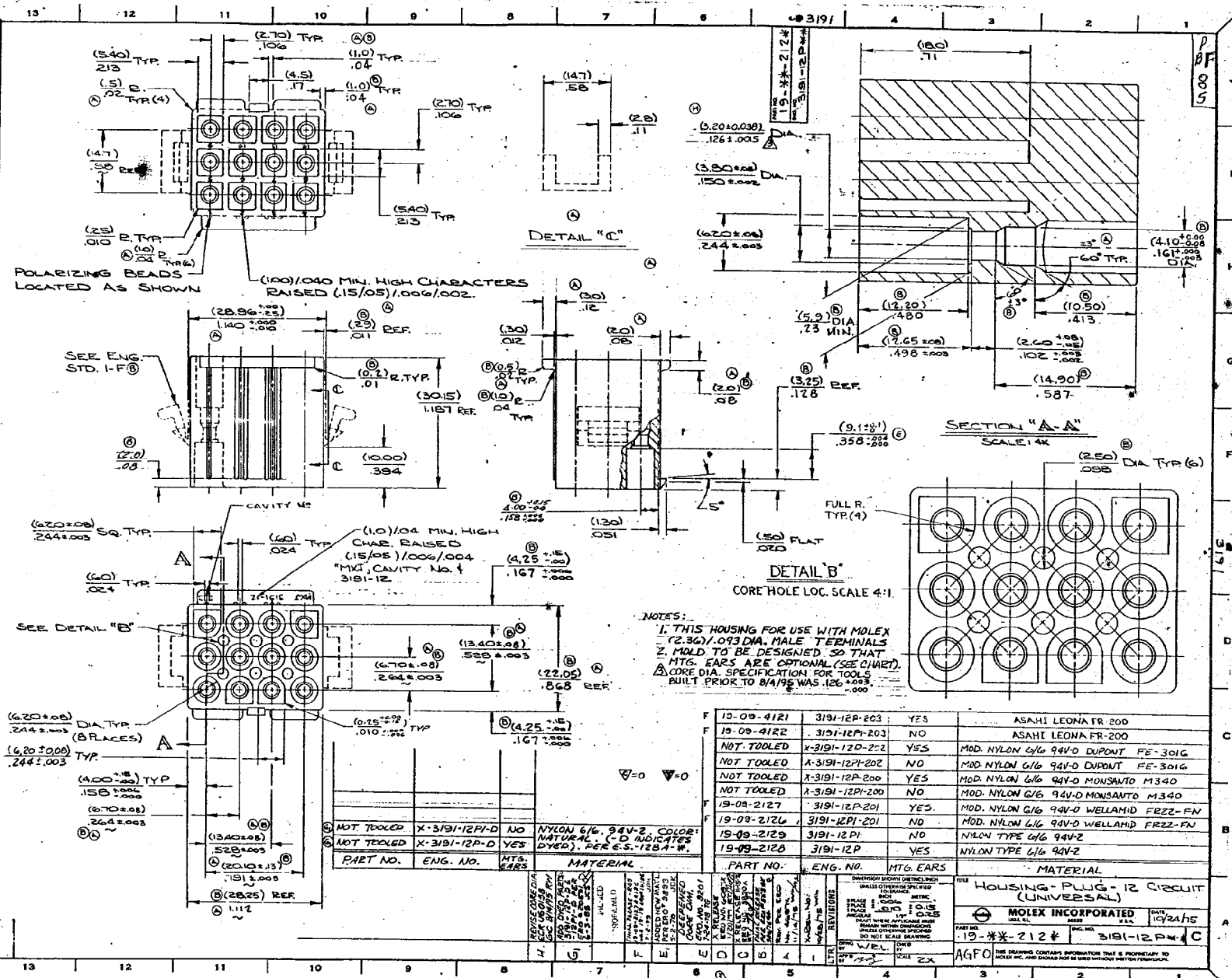


D
8
8
5



NOTES:
 1. THIS HOUSING FOR USE WITH MOLEX
 12.36/1.013 DIA. MALE TERMINALS
 Z MOLD TO BE DESIGNED SO THAT
 MTG. EARS ARE OPTIONAL (SEE CHART)
 A CORE DIA. SPECIFICATION FOR TOOLS
 BUILT PRIOR TO 8/1/95 WAS .126 ±.003

DATE	REV.	DESCRIPTION	BY	CHKD.	APPROVED
10-09-4121		3191-12P-203	YES		ASAHI LEONA FR-200
10-09-4122		3191-12P-203	NO		ASAHI LEONA FR-200
NOT TOOLED	X-3191-12P-222		YES		MOD. NYLON 6/6 94V-0 DUPONT FE-301G
NOT TOOLED	X-3191-12P-202		NO		MOD. NYLON 6/6 94V-0 DUPONT FE-301G
NOT TOOLED	X-3191-12P-200		YES		MOD. NYLON 6/6 94V-0 MONSANTO M340
NOT TOOLED	X-3191-12P-200		NO		MOD. NYLON 6/6 94V-0 MONSANTO M340
19-09-2127		3191-12P-201	YES		MOD. NYLON 6/6 94V-0 WELLMID FR22-FN
19-09-2126		3191-12P-201	NO		MOD. NYLON 6/6 94V-0 WELLMID FR22-FN
19-09-2129		3191-12P-1	NO		NYLON TYPE 6/6 94V-2
19-09-2128		3191-12P	YES		NYLON TYPE 6/6 94V-2

PART NO.	ENG. NO.	MTG. EARS	MATERIAL
NOT TOOLED	X-3191-12P-1-D	NO	NYLON 6/6 94V-2 COLOR: NATURAL (-D INDICATES DYED), PER E.S. 1284-W.
NOT TOOLED	X-3191-12P-D	YES	

PART NO.	ENG. NO.	MTG. EARS	MATERIAL
MOLEX HOUSING - PLUG - 12 CIRCUIT (UNIVERSAL)			
MOLEX INCORPORATED			
DATE: 10/24/85			
PART NO. 19-2128			
ENG. NO. 3191-12P-1-C			
AGFO			