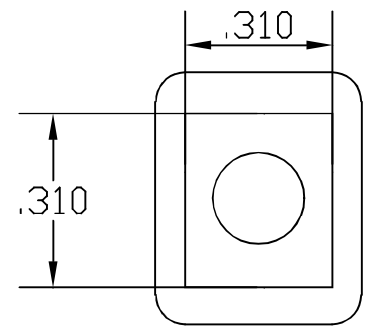
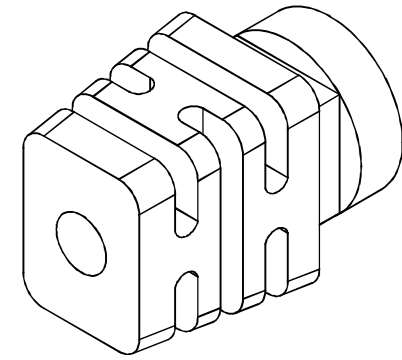
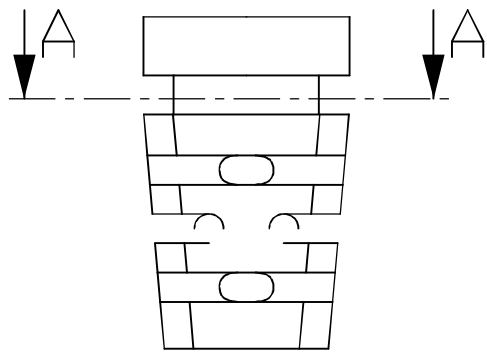
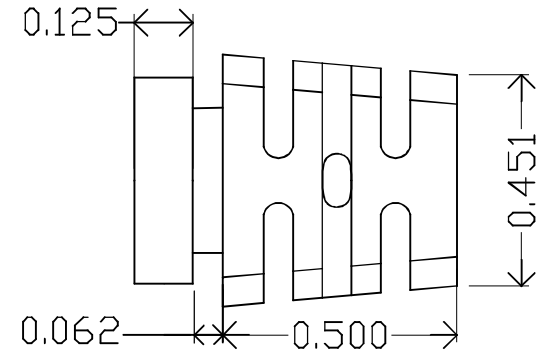
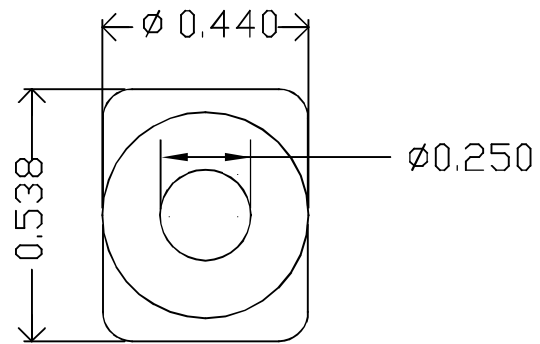


REVISIONS				
ZONE	REV.	DESCRIPTION	DATE	APPROVED



MOLD MATERIAL: ISC P/N: 5000091, PVC, M1472, Black, RoHS

DIMENSIONS ARE IN INCHES		NAME	DATE	ISC Engineering 4351 Schaefer Ave, Chino, CA 91710 Ph: 909-596-3315 Fax: 909-596-3335 www.iscengineering.com www.overmoldtooling.com
TOLERANCES: FRACTIONAL ± ANGULAR: MACH ± BEND ± TWO PLACE DECIMAL ± THREE PLACE DECIMAL ±		DRAWN	R FIERRO	
MATERIAL		CHECKED		
FINISH		ENG APPR		
NEXT ASSY USED ON		MFG APPR		
APPLICATION		Q.A.		
DO NOT SCALE DRAWING		COMMENTS:		1465080-250-B-310X310-440-0
				SIZE DWG. NO. 1467401 REV.
				SCALE: 5:1 WEIGHT: SHEET 1 OF 1

Dimensions are subject to change.
 PROPRIETARY AND CONFIDENTIAL
 THE INFORMATION CONTAINED IN THIS DRAWING IS THE SOLE PROPERTY OF ISC ENGINEERING. ANY REPRODUCTION IN PART OR AS A WHOLE WITHOUT THE WRITTEN PERMISSION OF ISC ENGINEERING IS PROHIBITED.

