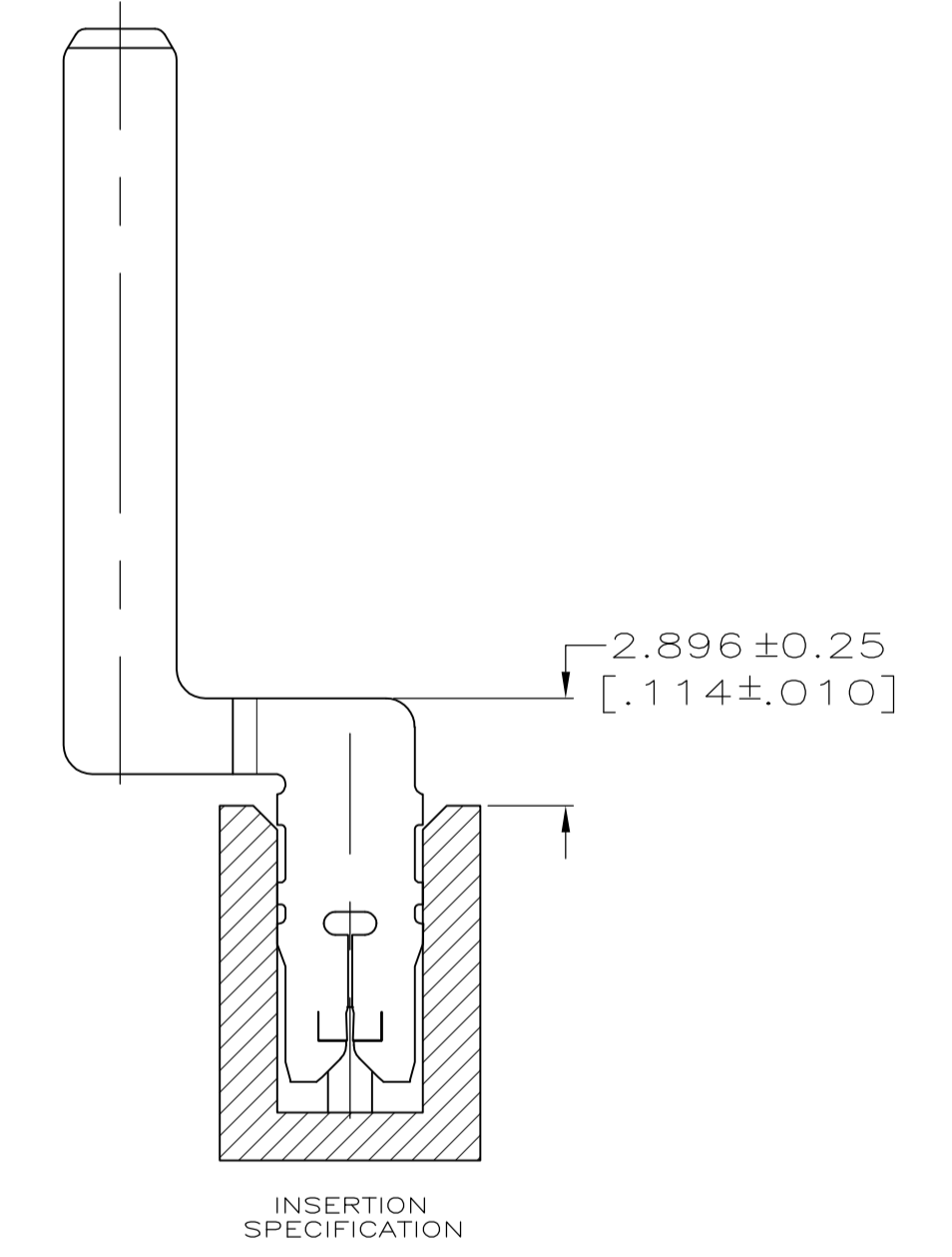
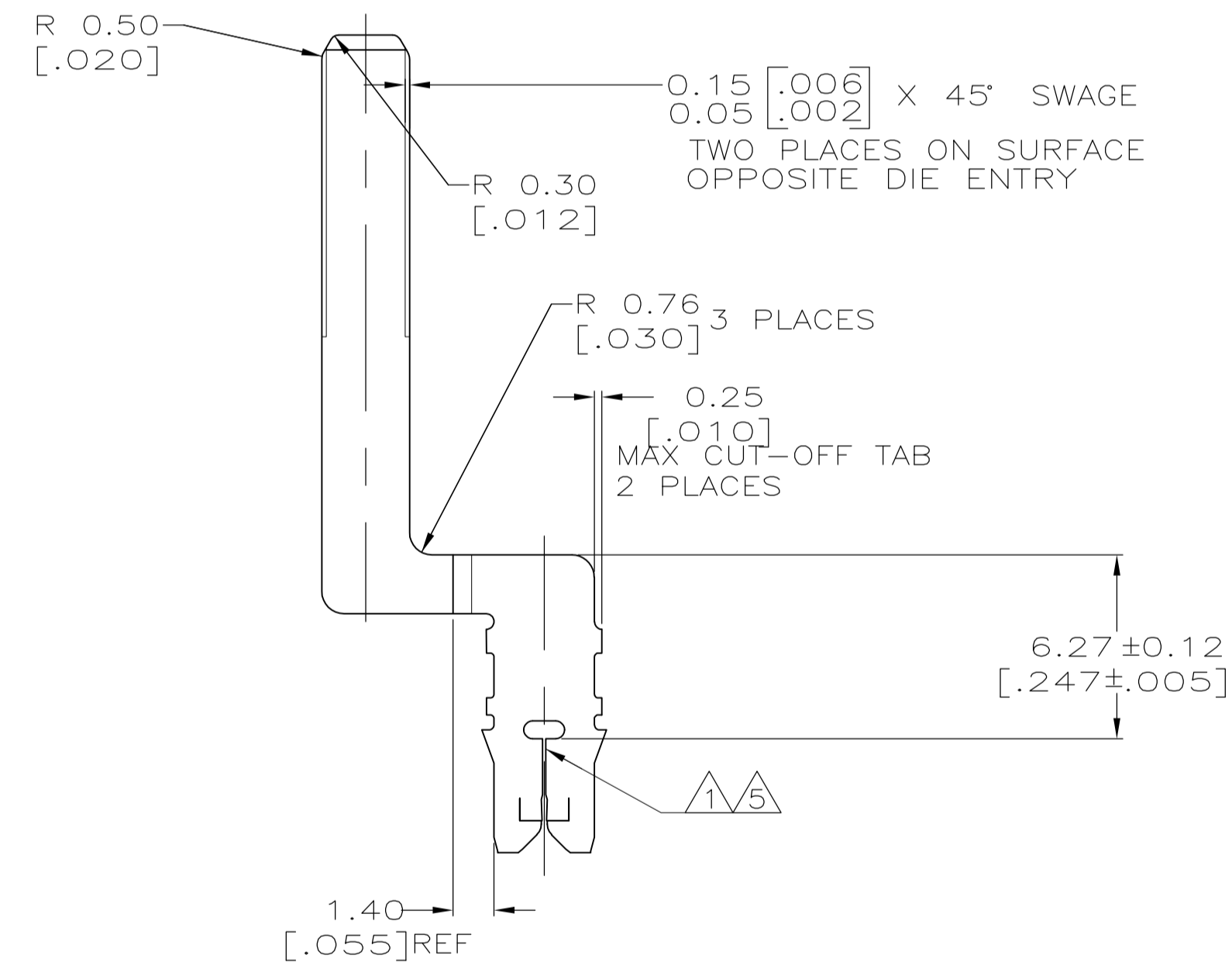
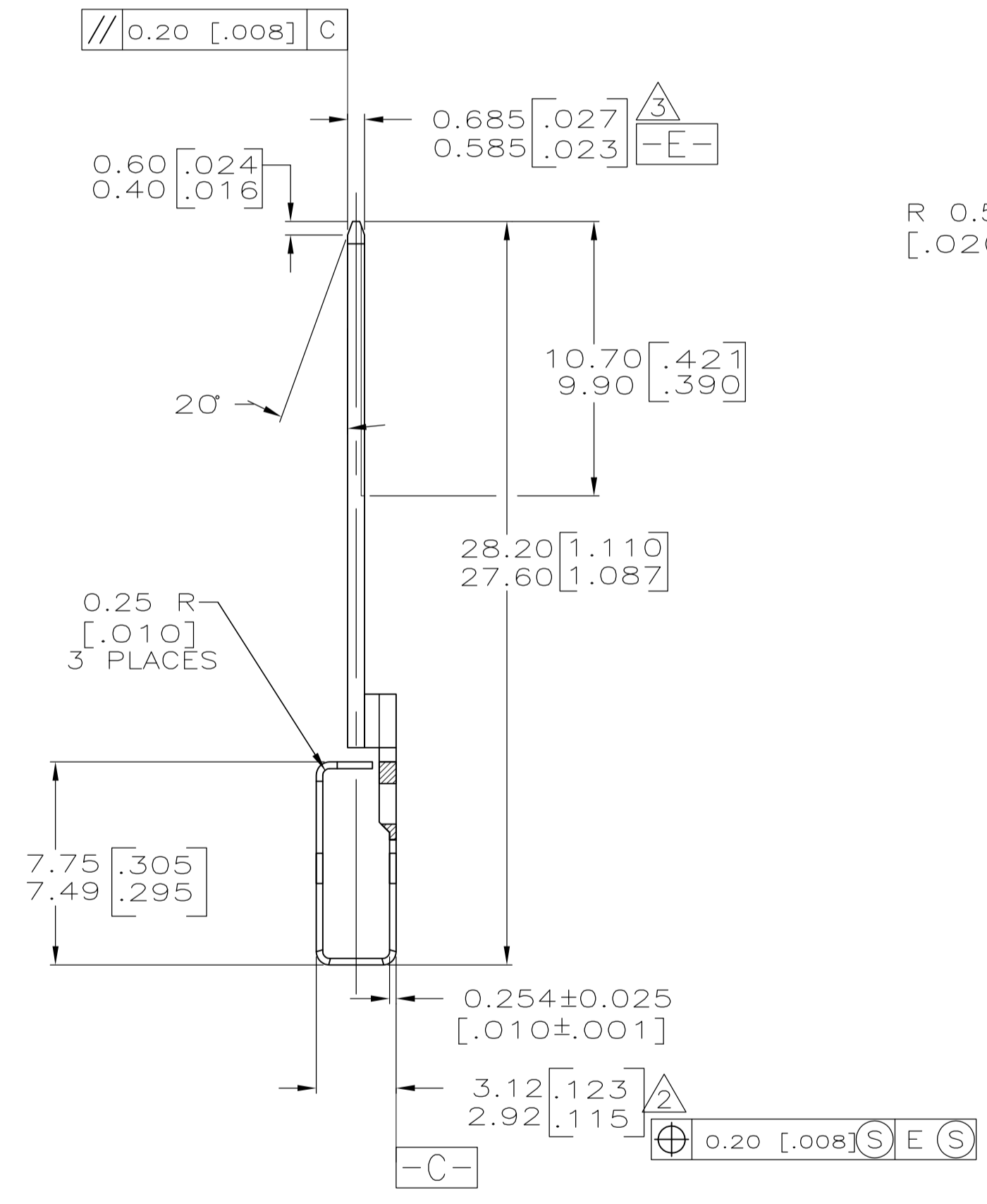
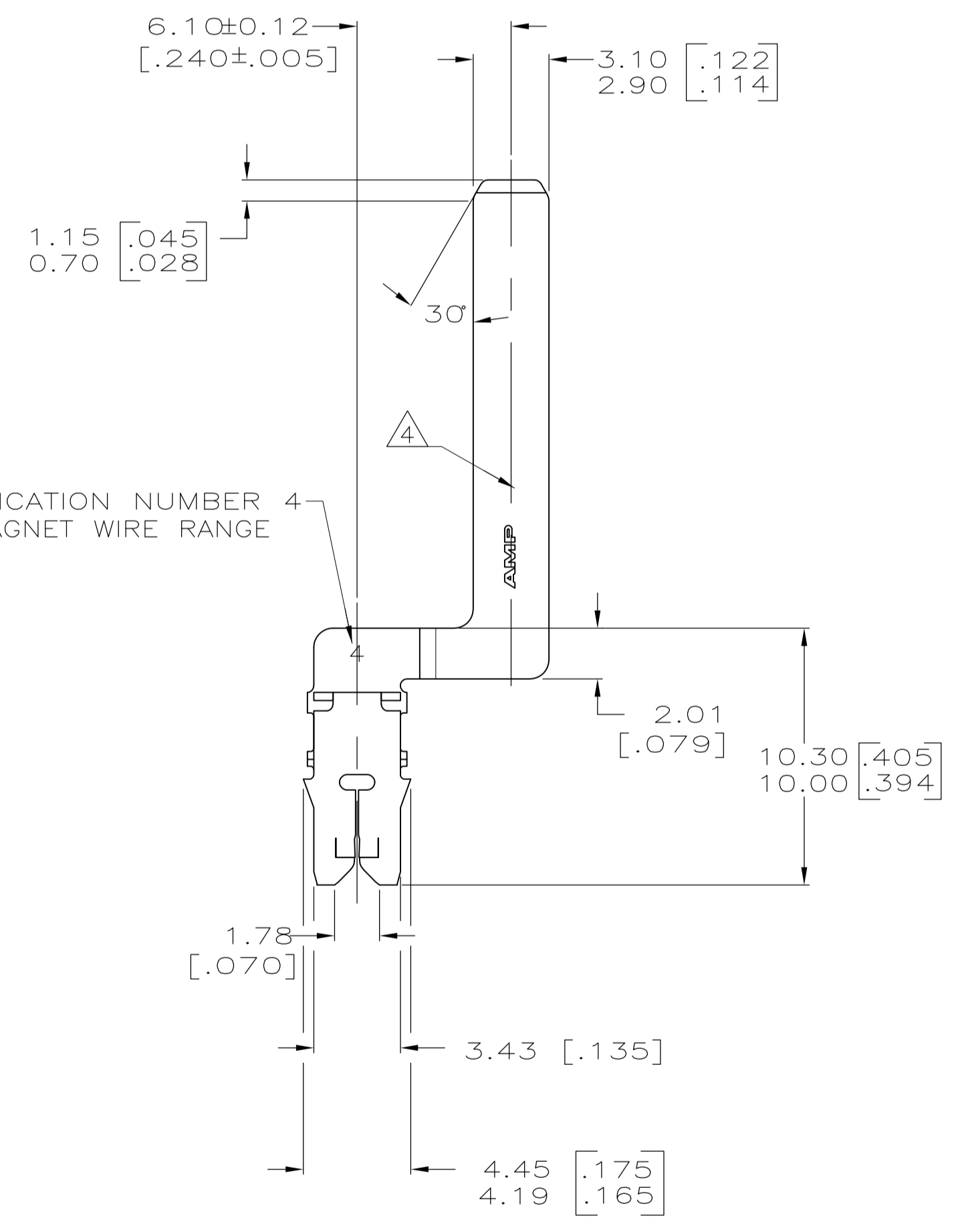
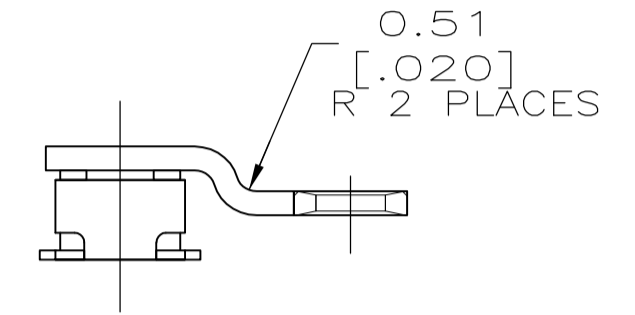
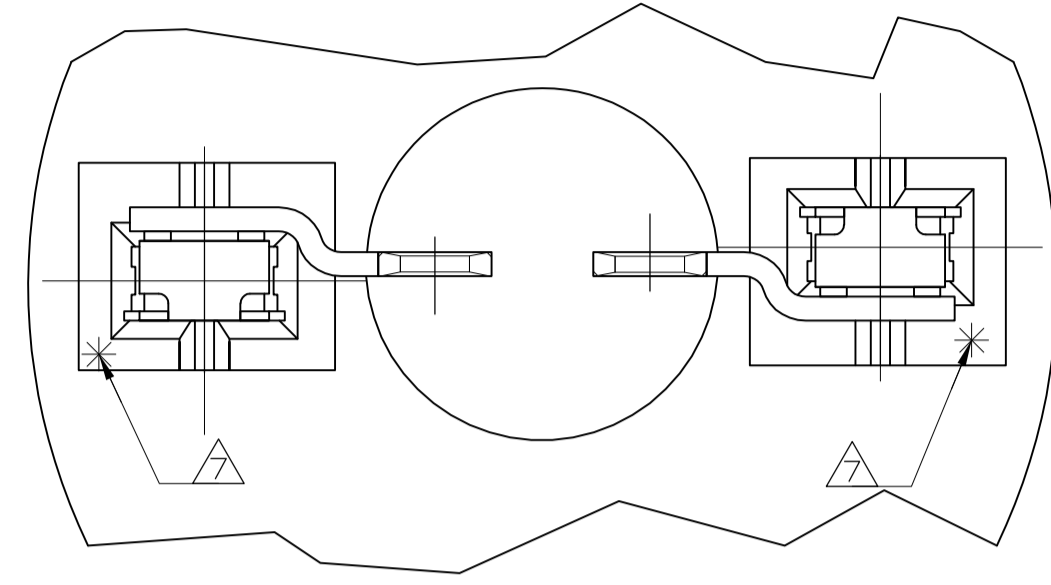


LOC		DIST		REVISIONS			
AF	50	REV	DATE	BY	APP'D	DATE	BY
A1	ECO-14-002653		24FEB14	PKS	RRP		

- 1 SLOT TERMINATES A SINGLE 0.20mm DIA [#32] AWG COPPER MAGNET WIRE.
- 2 BOX TO MEET THIS DIMENSION WHEN INSERTED INTO A CAVITY 3.12 [.123] DEEP.
- 3 SYMMETRY TO BE MEASURED AT THE "NOSE" OF THE BOX.
- 4 MEASURE PLATING THICKNESS ON THE TAB; FORMED SIDE OF THE TERMINAL.
- 5 SLOT MUST ACCEPT A 0.089 [.0035] DIA PIN GAGE; SLOT MUST NOT ACCEPT A 0.18 [.007] DIA PIN GAGE. MEASURE ONE BEAM AT A TIME.
- 6 0.001 [.000040] MIN. THICK TIN PLATE
- 7 POINT OF MEASUREMENT, LOCATED APPROXIMATELY AS SHOWN



1217032-1
PART NUMBER

THIS DRAWING IS A CONTROLLED DOCUMENT.		DIN R GRZYBOWSKI 24NOV97		TE Connectivity	
DIMENSIONS: INCHES		TOLERANCES UNLESS OTHERWISE SPECIFIED:		APVD M.S.FEHER 24NOV97	
0 PLC ± -		1 PLC ± -		NAME NELSON E. NEFF	
2 PLC ± 0.18[.007]		3 PLC ± -		PRODUCT SPEC 108-2012	
4 PLC ± -		ANGLES ± ± 3°		APPLICATION SPEC 114-2046	
MATERIAL BRASS		FINISH		SIZE CAGE CODE DRAWING NO. A1 00779 C=1217032	
		RESTRICTED TO		CUSTOMER DRAWING SCALE 5:1 SHEET 1 OF 1 REV A1	