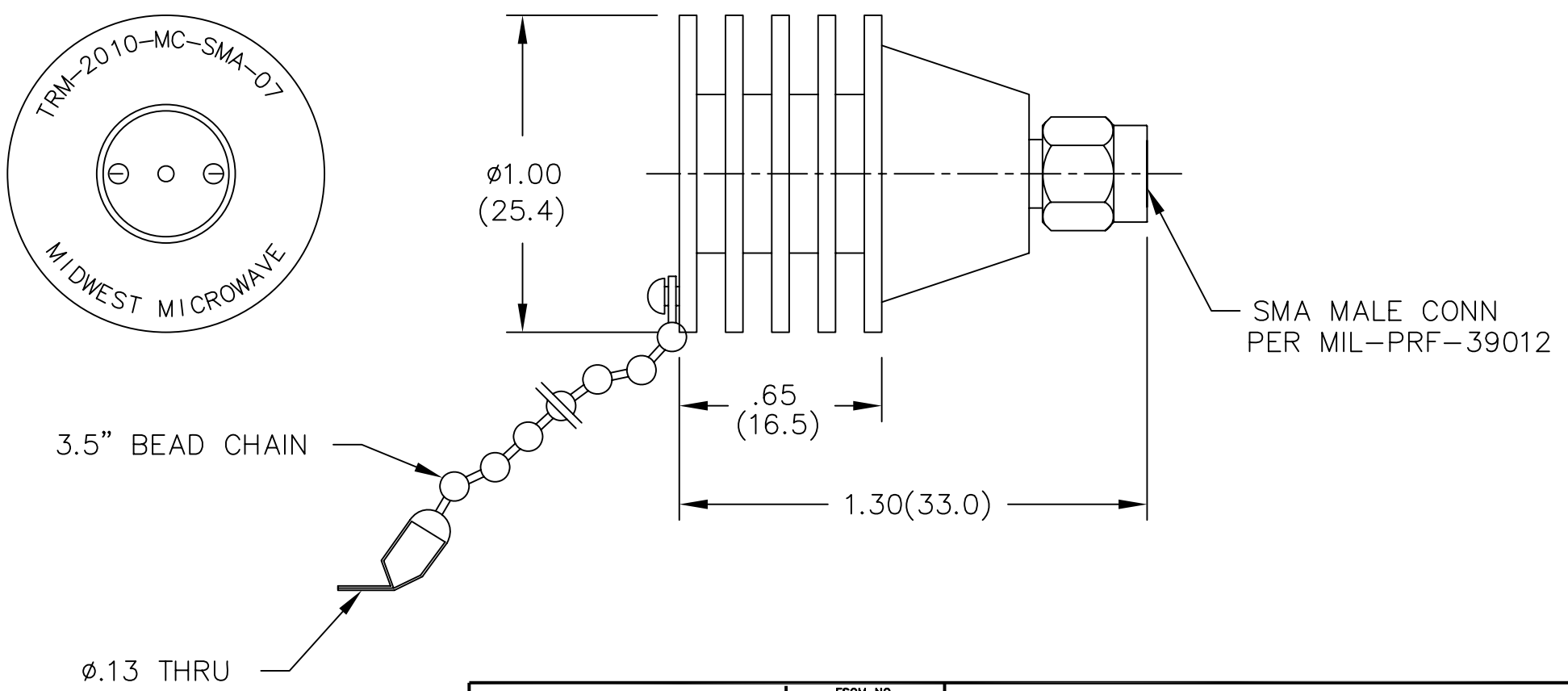


NOTES:

- 1.0 ELECTRICAL SPECIFICATIONS:
 - 1.1 FREQUENCY RANGE: DC to 18.0 GHz
 - 1.2 MAXIMUM INPUT POWER: 5 WATTS AVG. AT +40°C DERATED LINEARLY TO 0.5 WATTS AT +125°C
 - 1.3 OPERATING TEMP. RANGE: -55°C to +125°C
 - 1.4 IMPEDANCE: 50 OHMS
 - 1.5 MAXIMUM VSWR: 1.05 +0.01f(GHz)

2.0 MARKING: MARK UNIT AS SHOWN.
(REF.: INK-01526-27-02)

3.0 DIMENSIONS IN PARENTHESIS ARE
IN MILLIMETERS.



| REV. | DESCRIPTION | DATE |
|------|------------------|----------|
| - | RELEASED | 3/25/92 |
| A | ECN 15506 | 9/23/96 |
| A1 | ADDED TITLEBLOCK | 10/26/05 |

| | | | |
|---|---|---------------------------------|--------------------------------------|
| UNLESS OTHERWISE NOTED DIMENSIONS ARE IN INCHES AND TOLERANCES ARE: 3 PLACE DECIMALS ±.005 2 PLACE DECIMALS ±.02 FRACTIONS ±1/64 PARALLELITY: T.I.R. _____ FLATNESS: T.I.R. _____ CONCENTRICITY: T.I.R. _____ ANGLES AND PERPENDICULARITY: ±1' | FSCM NO. 34078 | MIDWEST MICROWAVE | |
| | NOTICE: The information contained in this drawing is proprietary and must not be used without the permission of Midwest Microwave | TITLE TERMINATION | |
| | DRAWN/DATE A.BEATTY 3/17/92 | ENG./DATE G.KOZAK 3/25/92 | DRAWING NUMBER TRM-2010-MC-SMA-07 |
| | CHECKED/DATE | APPROVED/DATE | SCALE: 2=1 SHEET 1 of 1 |