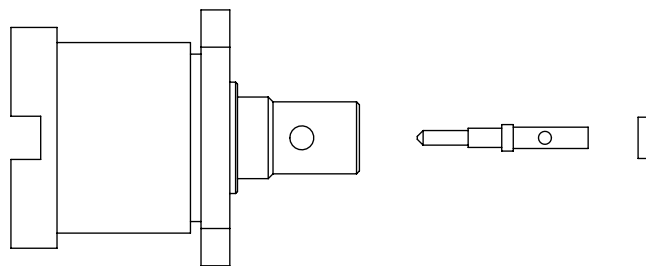
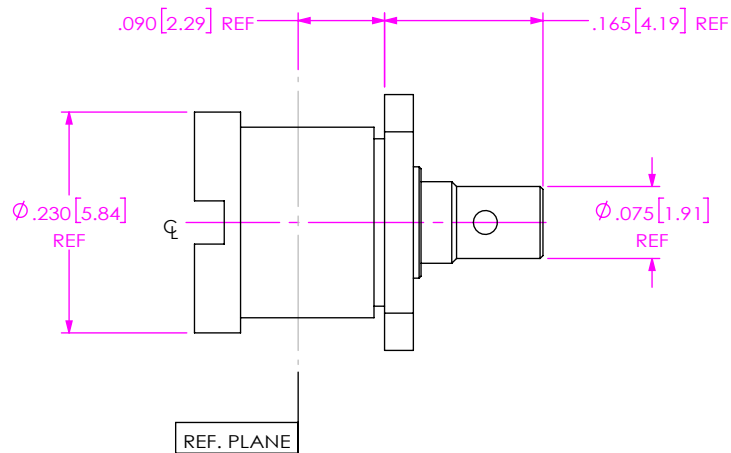


DO NOT  
SCALE FROM  
THIS PRINT

DESIGNED & DIMENSIONED  
IN INCHES[MILLIMETERS]



EXPLODED VIEW  
NOT TO SCALE  
(FOR CLARITY ONLY)

PRF00-PF-C-KK-047D-BD

SERIES  
-00: SMP

TERMINATION  
-D: DIRECT SOLDER

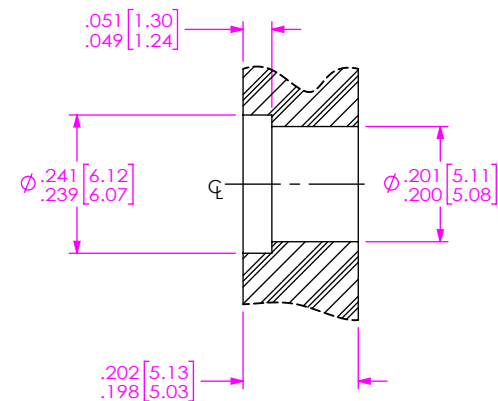
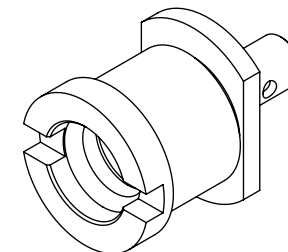
GENDER  
-PF: PLUG FULL DETENT

ORIENTATION  
-B: BULKHEAD

TYPE  
-C: CABLE

CABLE TYPE  
-047D: .047-LL SEMI-RIGID

FINISH  
-KK: SPECIAL PLATING CENTER CONTACT,  
SPECIAL PLATING OUTER BODY



RECOMMENDED PANEL LAYOUT

NOTES:

- MATERIAL:  
BODY & SHROUD: STAINLESS STEEL.  
PIN: BERYLLIUM COPPER.  
INSULATOR: ULTEM 1000.  
DIELECTRIC STOP: POLYAMIDE IMIDE.
- FINISH:  
BODY & SHROUD: PASSIVATED.  
BUSHING: GOLD OVER NICKEL PLATE,  
50 µIN MIN GOLD OVER 50 µIN MIN NICKEL.  
CONTACT: GOLD OVER NICKEL PLATE,  
100 µIN MIN GOLD OVER 100 µIN MIN NICKEL.
- PCI P/N: 3386.

UNLESS OTHERWISE SPECIFIED,  
DIMENSIONS ARE IN INCHES.  
TOLERANCES ARE:  
DECIMALS            ANGLES  
.XX: ±.01 [0.3]            1°  
.XXX: ±.005 [0.13]  
.XXXX: ±.0005 [0.013]

**PROPRIETARY NOTE**  
THIS DOCUMENT CONTAINS CONFIDENTIAL AND  
PROPRIETARY INFORMATION AND ALL DESIGN,  
MANUFACTURING, REPRODUCTION, USE, PATENT RIGHTS  
AND SALES RIGHTS ARE EXPRESSLY RESERVED BY SAMTEC,  
INC. THIS DOCUMENT SHALL NOT BE DISCLOSED, IN WHOLE  
OR PART, TO ANY UNAUTHORIZED PERSON OR ENTITY NOR  
REPRODUCED, TRANSFERRED OR INCORPORATED IN ANY  
OTHER PROJECT IN ANY MANNER WITHOUT THE EXPRESS  
WRITTEN CONSENT OF SAMTEC, INC.



520 PARK EAST BLVD, NEW ALBANY, IN 47150  
PHONE: 812-944-6733    FAX: 812-948-5047  
e-Mail: info@SAMTEC.com    code 55322

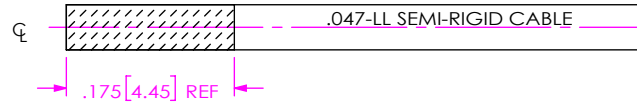
DO NOT SCALE DRAWING

SHEET SCALE: 5:1

DESCRIPTION: SMP BULKHEAD PLUG, FULL DETENT, DIRECT  
SOLDER FOR .047-LL SEMI-RIGID CABLE

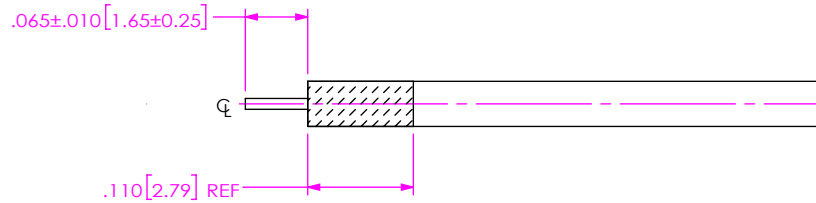
DWG. NO. PRF00-PF-C-KK-047D-BD

BY: SAMUEL C    08/13/2020    SHEET 1 OF 2



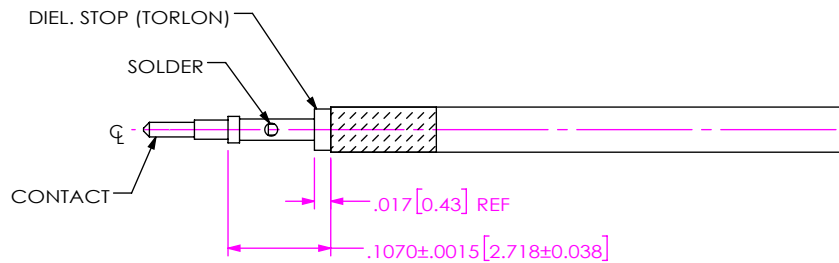
1. PRE-TIN CABLE JACKET TO THE APPROXIMATE LENGTH SHOWN.

IN-PROCESS 1



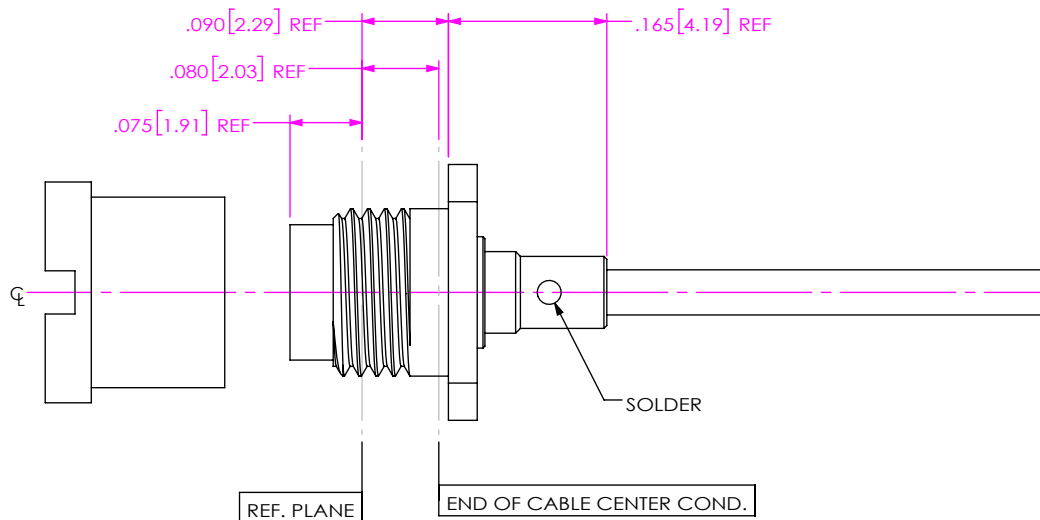
2. TRIM CABLE JACKET & DIELECTRIC TO EXPOSE CENTER CONDUCTOR AS SHOWN (DO NOT NICK CENTER COND.).

IN-PROCESS 2



3. SLIDE DIELECTRIC STOP OVER CABLE CENTER CONDUCTOR. THEN SOLDER CONTACT FLUSH AGAINST STOP TO DIMENSION SHOWN.

IN-PROCESS 3



4. INSERT CABLE/CONTACT SUB-ASSEMBLY INTO CONNECTOR UNTIL SEATED THEN SOLDER WHERE SHOWN.

IN-PROCESS 4

**PROPRIETARY NOTE**  
 THIS DOCUMENT CONTAINS CONFIDENTIAL AND PROPRIETARY INFORMATION AND ALL DESIGN, MANUFACTURING, REPRODUCTION, USE, PATENT RIGHTS AND SALES RIGHTS ARE EXPRESSLY RESERVED BY SAMTEC, INC. THIS DOCUMENT SHALL NOT BE DISCLOSED, IN WHOLE OR PART, TO ANY UNAUTHORIZED PERSON OR ENTITY NOR REPRODUCED, TRANSFERRED OR INCORPORATED IN ANY OTHER PROJECT IN ANY MANNER WITHOUT THE EXPRESS WRITTEN CONSENT OF SAMTEC, INC.

**samtec**  
 520 PARK EAST BLVD, NEW ALBANY, IN 47150  
 PHONE: 812-944-6733 FAX: 812-948-5047  
 e-Mail info@SAMTEC.com code 55322

DO NOT SCALE DRAWING

SHEET SCALE: 5:1

DESCRIPTION: SMP BULKHEAD PLUG, FULL DETENT, DIRECT SOLDER FOR .047-LL SEMI-RIGID CABLE

DWG. NO. PRF00-PF-C-KK-047D-BD

BY: SAMUEL C 08/13/2020 SHEET 2 OF 2