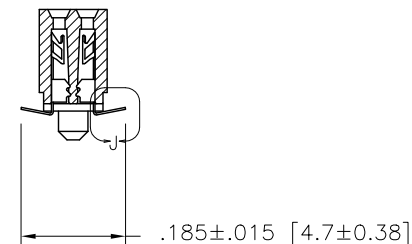
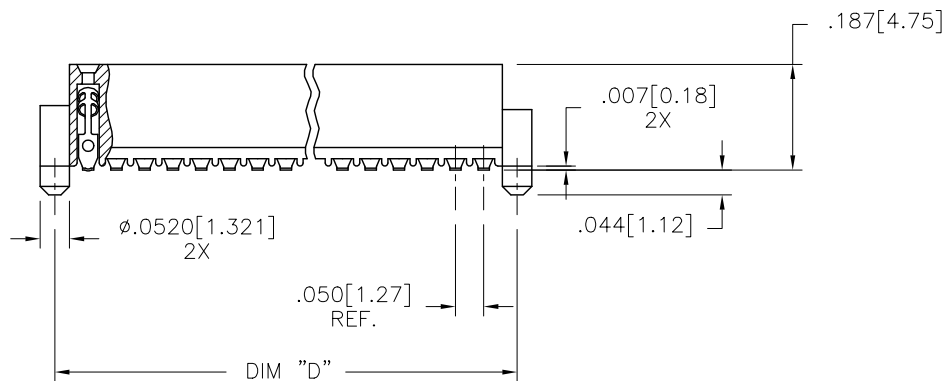
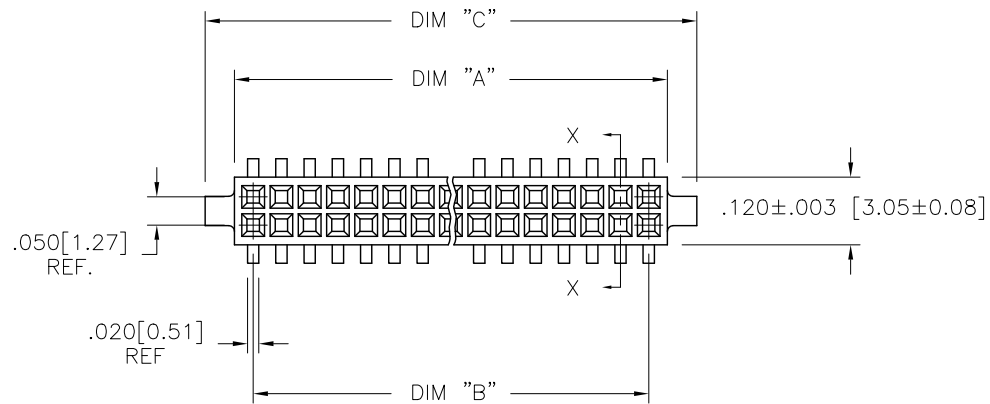
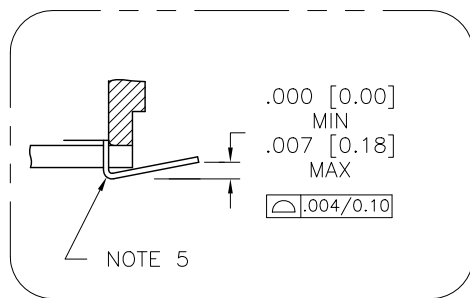


PRODUCT NUMBER
SEE TABLE



SECTION X-X



DETAIL J
SCALE 10/1

mat'l. code -				surface ISO 1302 ✓	tolerance ISO 406 ISO 1101	projection ISO 1101	product family RIB CAGE
ltr	ecn no	dr	date	tolerances unless otherwise specified		INCH/MM	title .050cc VERT. CARD CONN. SURF. MT. W/LOC. FEATURES
AC	M05-0084	MHT	5/05/05	angles	linear		
AD	M06-0284	AEA	7/27/06	σ±2'	linear	scale 3:1	sheet 1 of 4 size 87023 A3
AE	M07-0267	MHT	6/08/07	σ±2'	linear	scale 3:1	
AF	M07-0345	AGS	7/26/07	dr	M. CLOUSER	5/25/91	FCJ type Product Customer Drawing
AG	M09-0345	CMR	4/06/09	enfr	B. BARUFFALO	5/25/91	
AH	N10-0174	YO	6/17/10	chr	B. BARUFFALO	5/25/91	
AJ	ELX-N-010201	YO	2/8/12	appd	B. BARUFFALO	5/25/91	
sheet index	revision sheet	AJ	AJ	AJ	AJ		
		1	2	3	4		

PRODUCT NO.
87023 - XXX

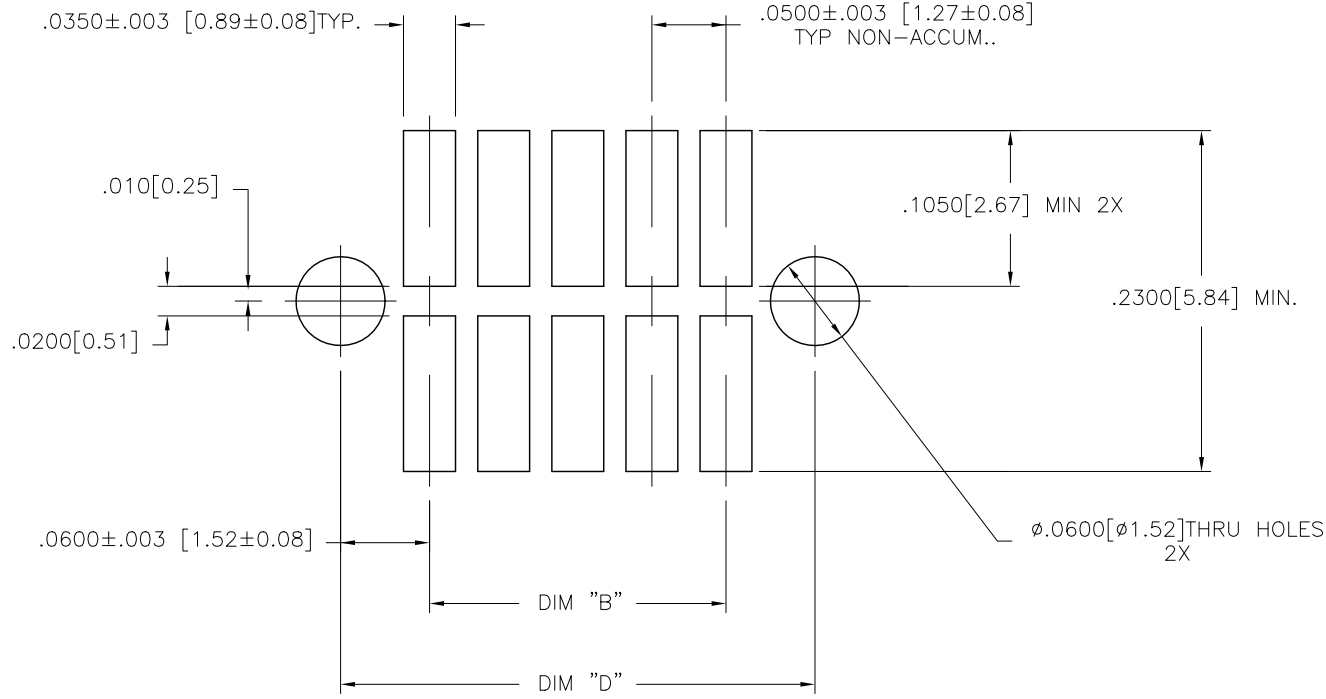
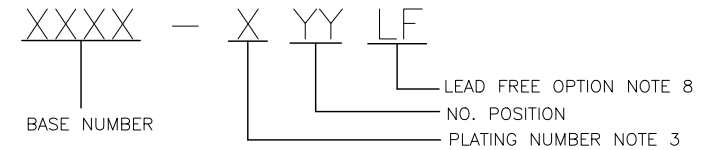


FIGURE A
RECOMMENDED
P.C.B. LAYOUT

mat'l. code		surface		tolerance		projection		product family	
-		ISO 1302 ✓		ISO 406 ISO 1101				RIB CAGE	
ltr	ecn	no	dr	date	tolerances unless otherwise specified			title	
AJ					angles	linear	xx ±.01/.3	.050cc VERT. CARD CONN.	
					σ±2'		xxx ±.005/.13	SURF. MT. W/LOC. FEATURES	
							xxxx ±.0020/.050	scale 3:1	
			dr	M. CLOUSER	5/25/91			dwg no	
			enfr	B. BARUFFALO	5/25/91			sheet 2 of 4	
			chr	B. BARUFFALO	5/25/91			size	
			appd	B. BARUFFALO	5/25/91			A3	
sheet index		revision sheet						type Product Customer Drawing	

PRODUCT NO. NOTE 8	SIZE	DIM A	DIM B	DIM C	DIM D	SPECIAL PACKAGING	TAPE WIDTH		PIECES PER REEL
								PITCH	
87023-605	2 X 5	.266/6.756	.200/5.08	.370/9.398	.3200/8.128	NOTE 6	24mm	12mm	750
-610	2 X 10	.516/13.106	.450/11.43	.620/15.748	.5700/14.478	NOTE 6	24mm	12mm	750
-615	2 X 15	.766/19.456	.700/17.78	.870/22.098	.8200/20.828	NOTE 6	44mm	12mm	500
-620	2 X 20	1.016/25.806	.950/24.13	1.120/28.448	1.0700/27.178	NOTE 6 & 7	44mm	12mm	500
-625	2 X 25	1.266/32.156	1.200/30.48	1.370/34.798	1.3200/33.528	NOTE 6	56mm	12mm	500
-630	2 X 30	1.516/38.506	1.450/36.83	1.620/41.148	1.5700/39.878	NOTE 6 & 7	56mm	12mm	500
-635	2 X 35	1.766/44.856	1.700/43.18	1.870/47.498	1.8200/46.228	NOTE 6	72mm	12mm	500
-640	2 X 40	2.016/51.206	1.950/49.53	2.120/53.848	2.0700/52.578	NOTE 6 & 7	72mm	12mm	500
-645	2 X 45	2.266/57.556	2.200/55.88	2.370/60.198	2.3200/58.928	NOTE 6	72mm	12mm	500
-650	2 X 50	2.516/63.906	2.450/62.23	2.620/66.548	2.5700/65.278	NOTE 6	88mm	12mm	500
-905	2 X 5	.266/6.756	.200/5.08	.370/9.398	.3200/8.128	NO	—	—	—
-910	2 X 10	.516/13.106	.450/11.43	.620/15.748	.5700/14.478	NO	—	—	—
-915	2 X 15	.766/19.456	.700/17.78	.870/22.098	.8200/20.828	NO	—	—	—
-920	2 X 20	1.016/25.806	.950/24.13	1.120/28.448	1.0700/27.178	NO	—	—	—
-925	2 X 25	1.266/32.156	1.200/30.48	1.370/34.798	1.3200/33.528	NO	—	—	—
-930	2 X 30	1.516/38.506	1.450/36.83	1.620/41.148	1.5700/39.878	NO	—	—	—
-935	2 X 35	1.766/44.856	1.700/43.18	1.870/47.498	1.8200/46.228	NO	—	—	—
-940	2 X 40	2.016/51.206	1.950/49.53	2.120/53.848	2.0700/52.578	NO	—	—	—
-945	2 X 45	2.266/57.556	2.200/55.88	2.370/60.198	2.3200/58.928	NO	—	—	—
87023-950	2 X 50	2.516/63.906	2.450/62.23	2.620/66.548	2.5700/65.278	NO	—	—	—



NOTES:

- ① HOUSING MATERIAL:
GLASS FILLED THERMOPLASTIC FLAME RETARDANT PER UL 94V-0
COLOR: NATURAL
- ② TERMINAL MATERIAL: BeCu
- ③ TERMINAL PLATING:
-6XXLF: 30u"/.76um MIN HARD GOLD OR GXT OVER Ni ON CONTACT ZONES.
100u"/2.54um MIN PURE TIN OVER Ni
IN SOLDERING ZONES, OTHERWISE GOLD FLASH OR UNPLATED.

-9XXLF: 60u"/1.52um MIN HARD GOLD ON CONTACT ZONES,
100u"/2.54um MIN PURE TIN OVER Ni
OVER Ni IN SOLDERING ZONES, OTHERWISE GOLD FLASH OR UNPLATED.
- 4 APPLICATION INFORMATION:
A. RECOMMENDED MOUNTING PAD PATTERN IS SHOWN IN FIGURE "A".

B. MATING PINS TO BE .0176/0.447 TO .0181/0.459 DIA.

C. MATING PIN TIPS TO BE IN TRUE POSITION TO MATING GRID WITHIN .006/0.15 DIA.

D. SUGGESTED MATING PIN LENGTH .130/3.30 ±.010/0.25.
- ⑤ LEAD TIPS TO BE ABOVE HEEL, UP TO .007/0.18 MAX.
COPLANARITY TO BE MEASURED AT LOWEST POINT (HEEL).
- ⑥ ADD "TR" TO END OF DASH NUMBER FOR TAPE AND REEL PACKAGED WITH CAP. TOOLED ONLY FOR NOTED CONNECTORS.
7. ADD "CT" TO END OF DASH NUMBER FOR CONNECTOR WITH CAP FOR VACUUM PICKUP IN TUBE.
- ⑧ ADD LF SUFFIX AT THE END OF PART NUMBER FOR LEAD FREE OPTION.
9. THE HOUSING WILL WITHSTAND EXPOSURE TO 260°C PEAK TEMPERATURE FOR 20 SECONDS IN A CONVECTION, INFRA-RED OR VAPOR PHASE REFLOW OVEN. SEE APPLICATION NOTE/PROCEDURES IF THEY ARE AVAILABLE.
- ⑩ THIS PRODUCT MEETS EUROPEAN UNION DIRECTIVES AND OTHER COUNTRY REGULATION AS DESCRIBED IN GS-22-008.
11. PRODUCT SPEC PER BUS-12-087.

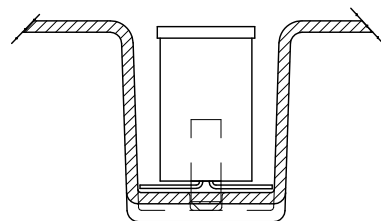
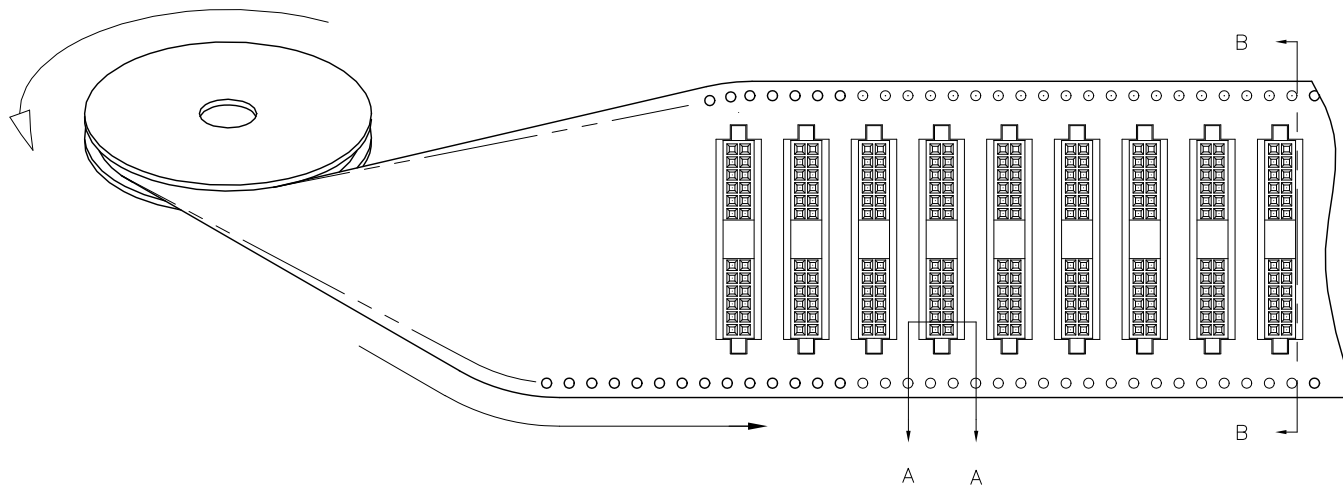
mat'l. code		surface		tolerance		projection		product family		
-		ISO 1302 ✓		ISO 406				RIB CAGE		
				ISO 1101						
ltr	ecn	no	dr	date	tolerances unless otherwise specified			title		
AJ					angles	linear		.050cc VERT. CARD CONN.		
					σ±2'		INCH/MM	SURF. MT. W/LOC. FEATURES		
							scale 3:1			
			dr	M. CLOUSER	5/25/91			dwg no		
			enrg	B. BARUFFALO	5/25/91			sheet 3 of 4		size
			chr	B. BARUFFALO	5/25/91			87023		A3
			appd	B. BARUFFALO	5/25/91			type Product Customer Drawing		
sheet	revision									
index	sheet									

PRODUCT NUMBER
SEE TABLE

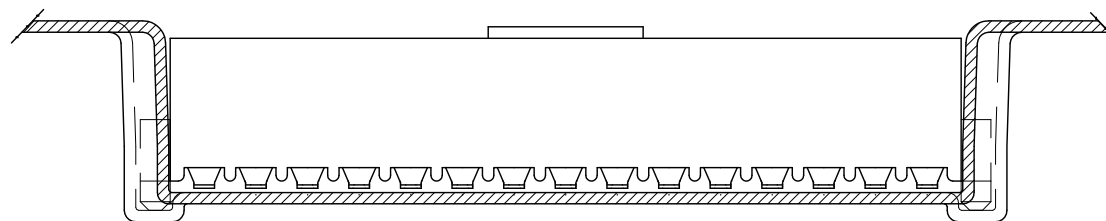
UNREELING
DIRECTION

REFERENCE ONLY

TAPE WIDTH'S 32mm AND ABOVE HAS BOTH FEED TRACKS,
BELOW 32mm HAS TOP FEED TRACK ONLY.



SECTION A-A



SECTION B-B

mat'l. code -		surface ISO 1302 ✓	tolerance ISO 406 ISO 1101	projection [Symbol]	product family RIB CAGE
ltr	ecn	no	dr	date	tolerances unless otherwise specified
AJ					angles linear xx ±.01/.3 xxx ±.005/.13 σ±2' xxx ±.0020/.050
					INCH/MM scale 3:1
			dr	M. CLOUSER 5/25/91	title .050cc VERT. CARD CONN. SURF. MT. W/LOC. FEATURES
			enr	B. BARUFFALO 5/25/91	dwg no 87023
			chr	B. BARUFFALO 5/25/91	sheet 4 of 4 size A3
			app	B. BARUFFALO 5/25/91	type Product Customer Drawing
sheet	revision				
index	sheet				