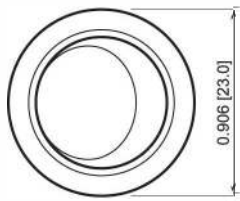
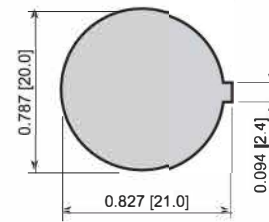


ROCKER



Suggested Panel Cutout



FEATURES:

- Aesthetically Designed
- High Ratings with UL Approval
- Single Pole With Various Functions
- Short Body for Low Clearance Applications

SPECIFICATIONS:

RATING: RATING OPTION D:
 20A 125VAC T65 [UL, cUL]
 12A 250VAC T65 [UL, cUL]

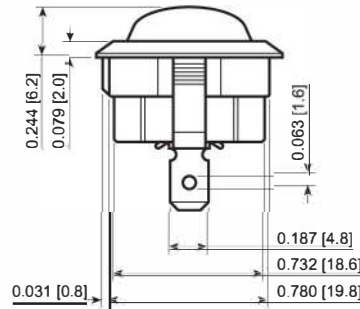
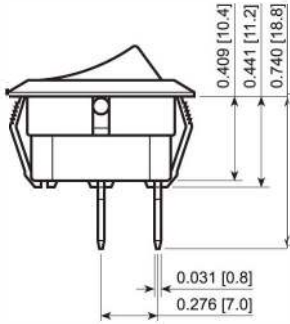
TEMPERATURE: -20°C to 65°C [UL, cUL]

ELECTRICAL LIFE: 10,000 Cycles

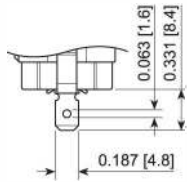
CONTACT RESISTANCE: 35mΩ Max. at 50VAC

INSULATION RESISTANCE: 100MΩ Min. at 500VAC

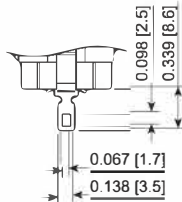
DIELECTRIC STRENGTH: 1,500VAC for 1 Minute



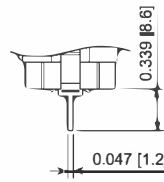
Terminal Options



4.8mm Tab



Solder



PCB Pin



RR51D1123

| Series | Terminal | Function | Rating | Body Color | Actuator Color | Marking Color | Marking Type |
|--------|--|----------------------------|----------------|---|--|---|--|
| RR5 | 1 - 4.8mm Tab (Small Hole) 3 - PCB Pins 5 - Solder | 1 - Off-On 4 - Off-(On) | D - 20A 125VAC | 1 - Black 2 - White 4 - Grey 9 - Red | 1 - Black 2 - White 4 - Grey 5 - Orange 7 - Blue 8 - Green 9 - Red | 0 - None 1 - Black 2 - White 8 - Red | 0 - None 1 - I/O Vert. 3 - ON/OFF Vert. 4 - ON/OFF Horiz. R - I/O Horiz. |

Custom Colors and Markings Available Upon Request

EXAMPLE PART NUMBERS:

RR51D1100 1P Off-On
Black Body/Actuator, No Marking

RR51D1121 1P Off-On
Black Body/Actuator, I/O Vert.