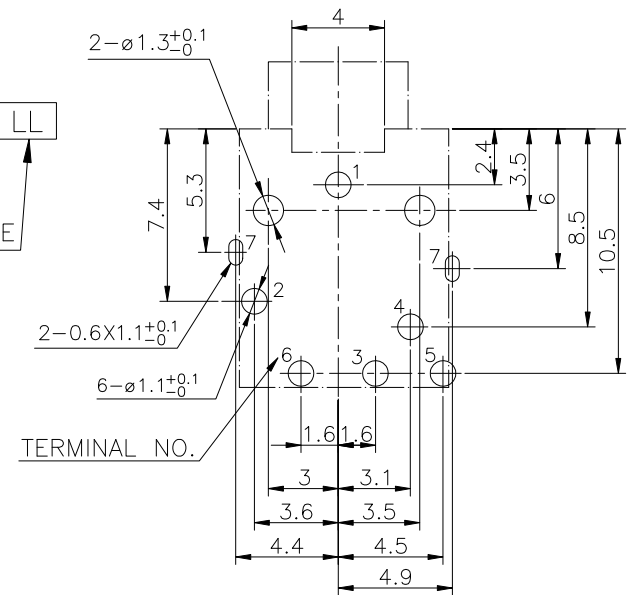
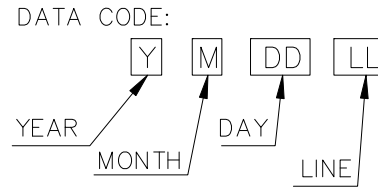
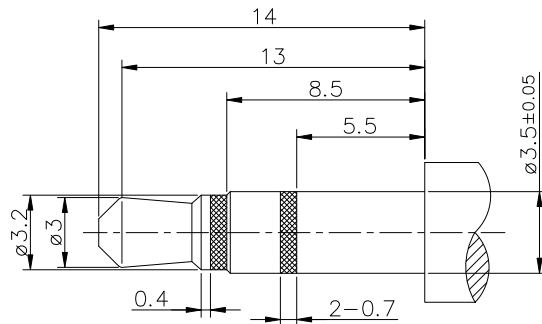
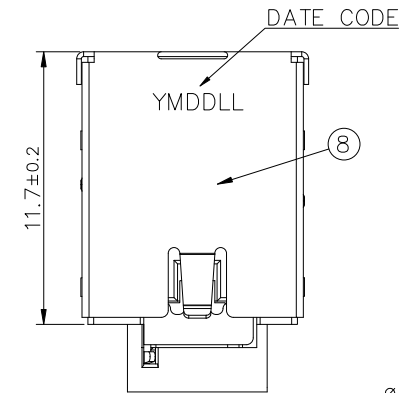
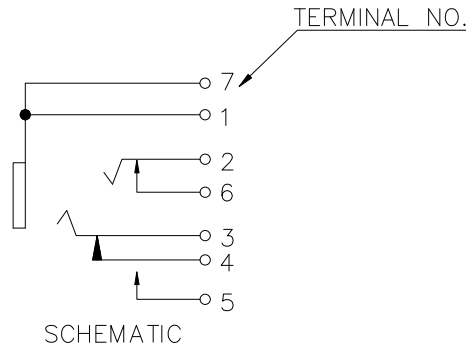
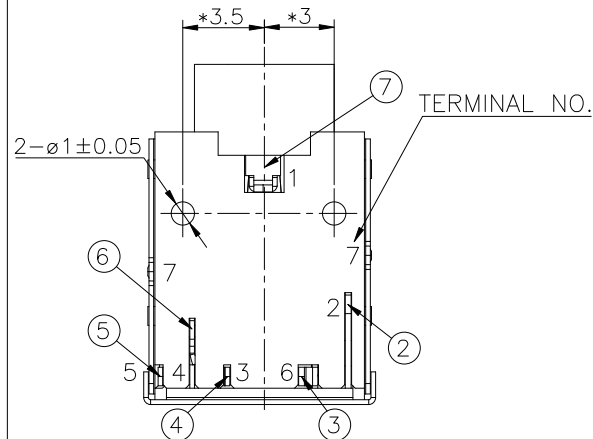
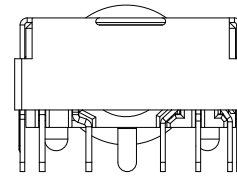
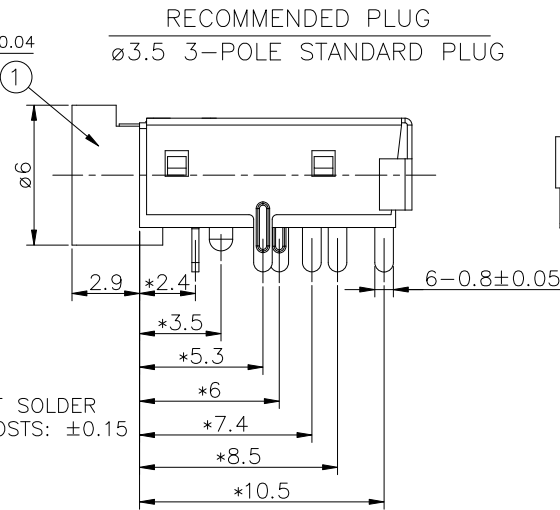
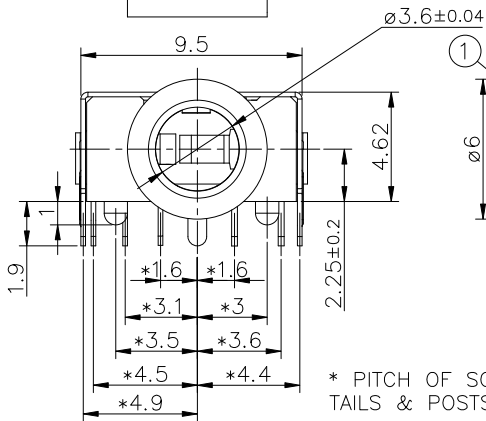


PRODUCT NUMBER	PACKAGE
10124014-001TLF	TRAY



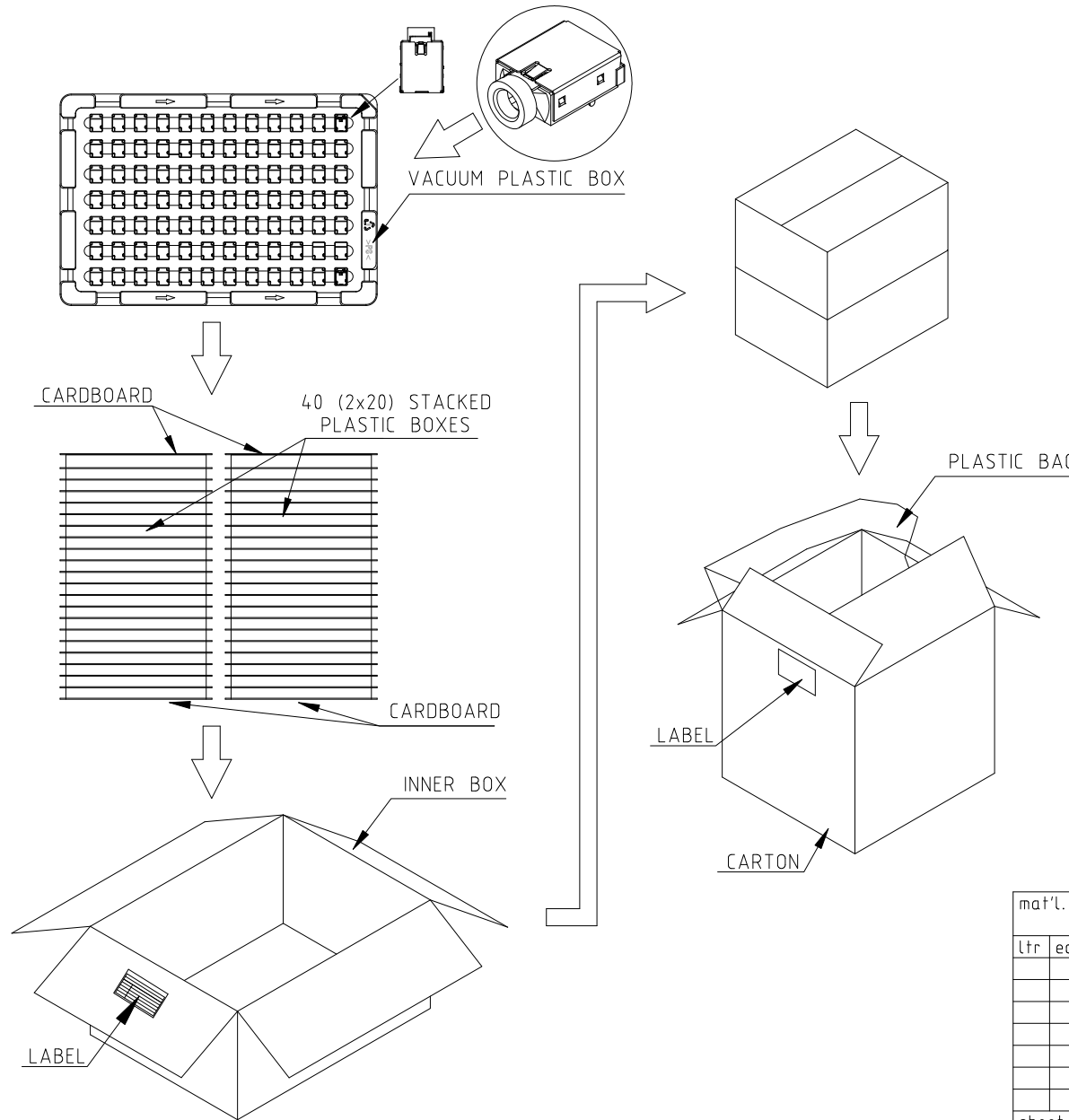
PCB HOLES(TOP VIEW) t=1.2mm
NOTE: GENERAL TOLERANCE: ±0.05mm



NO.	PART NAME	TER'NO.	QTY.	MATERIAL	REMARK
⑧	SHIELD	7	1	STAINLESS STEEL t=0.20±0.03	Ni-PLATED 1 st : Cu=1~5um 2 nd : Ni=0.8~2.5um
⑦	EARTH TERMINAL	1	1	BRASS t=0.30±0.03	MbSn-PLATED 1 st : Cu=1~3um 2 nd : Ni=1~3um 3 rd : Sn=3~8um
⑥	TRANSFER TERMINAL	4	1	PHOSPHOR BRONZE t=0.20±0.03	Au/Ni-PLATED 1 st : Ni=0.8~2.5um 2 nd : Au=1~3u"
⑤	BREAK TERMINAL	5	1	PHOSPHOR BRONZE t=0.20±0.03	
④	RING TERMINAL	3	1	PHOSPHOR BRONZE t=0.20±0.03	
③	SHUNT TERMINAL	6	1	BRASS t=0.25±0.03	
②	TIP TERMINAL	2	1	PHOSPHOR BRONZE t=0.25±0.03	
①	HOUSING		1	PA10T 94V-0	Black

mat'l. code	surface	tolerance	projection	product family
		ASME Y14.5		
ltr	ecn no	dr	date	tolerances unless otherwise specified
A		TAI	2014-12-15	16<L≤63 ±0.4
				4<L≤16 ±0.3
				L≤4 ±0.2
				X°±5°
				scale
				MM
				title
				3.5mm AUX JACK, 3 SEGMENTS, WITH SHELL
				dr
				KENNY TAI 2013-01-14
				enr
				KENNY TAI 2013-01-14
				chr
				KENNY TAI 2013-07-11
				appd
				PM ZHENG 2013-07-15
				FCI
				dwg no
				10124014
				sheet 1 of 2
				size
				A4
				type
				CUSTOMER Drawing
sheet index	revision sheet	A	A	
		1	1	

PRODUCT NUMBER	Q'ty/Vacuum Box	Vacuum Box/Inner Box	Q'ty/Inner Box	Inner Box/Carton	Q'ty/Carton
10124014-001TLF	84	2x20=40	3360	2	6720



PACKING:

- Put connectors into a vacuum plastic box.
- Pile up 20 loaded vacuum plastic boxes. Put a cardboard on top and a cardboard on bottom of these plastic boxes.
- Secure the plastic boxes with PE film.
- Put 2 stacked plastic boxes into a inner box. Seal the inner box.
- Put 2 inner boxes into a plastic bag then put into a carton.
- Seal the carton and attach a label.

PACKAGE DIMENSIONS:

- Carton: 410x325x430mm, 6mm Thickness
- Inner Box: 390x300x193mm, 6mm Thickness
- Cardboard: 375x280x3mm
- Vacuum Plastic Box: 190x285x21.5mm
- N.W.= 6.85 Kg; G.W= 8.85 Kg

NOTES:

- MATERIAL:**
SEE BOM TABLE.
- FINISH:**
SEE BOM TABLE.
- THE HOUSING WILL WITHSTAND EXPOSURE TO 260°C PEAK TEMPERATURE FOR 5 SECONDS IN A CONVECTION REFLOW OVEN.
- PRODUCT SPECIFICATION: GS-12-114.4.

mat'l. code		surface <input checked="" type="checkbox"/>		tolerance		projection		product family	
ltr		ecn no		dr		date		title	
								3.5mm AUX JACK, 3 SEGMENTS, WITH SHELL	
								scale	
								MM	
								scale	
								FCI	
				dr		KENNY TAI		2013-01-14	
				engr		KENNY TAI		2013-01-14	
				chr		KENNY TAI		2013-07-11	
				appd		PM ZHENG		2013-07-15	
sheet index		revision sheet		A		A		type	
				1		1		CUSTOMER Drawing	
								dwg no	
								sheet 2 of 2	
								size	
								A4	