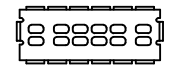
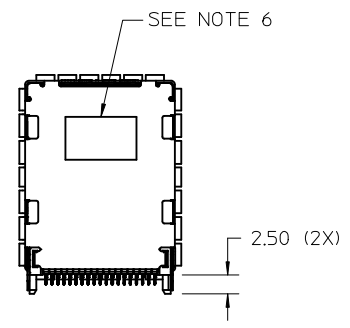
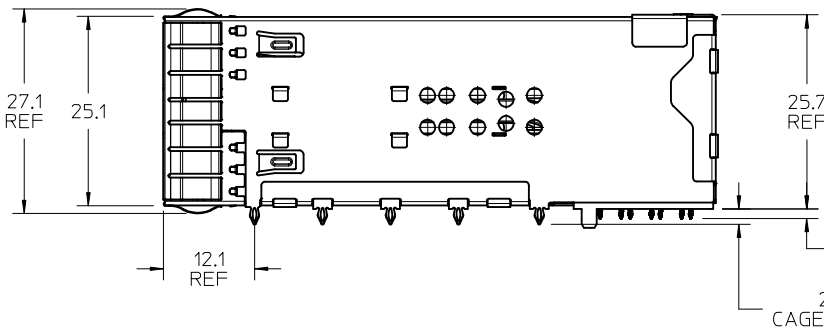
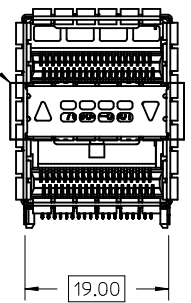


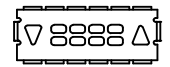
NOTES

1. MATERIALS
 CAGE: NICKLE SILVER, 0.25 THICK
 SPRING FINGERS: PHOS. BRONZE, 0.10 THICK
 CONNECTOR HOUSING: HIGH PERFORMANCE THERMOPLASTIC, 94V-0
 TERMINALS: HIGH PERFORMANCE COPPER ALLOY, 0.18 THICK
2. FINISH
 SPRING FINGERS: 100µm NICKEL OVERALL
 TERMINALS: CONTACT AREA: 0.76µm MIN GOLD OVER
 2.5µm MIN NICKEL
 COMPLIANT AREA: 0.76-1.52µm MATTE TIN
 OVER 1.27µm MIN NICKEL
3. ALL SURFACES TO BE CLASS "C" OR BETTER PER MOLEX COSMETIC SPECIFICATION PS-45499-002
4. REFER TO PK-76871-9001 FOR PACKAGING INFORMATION
5. CONNECTOR INTENDED TO MATE WITH CABLE PLUG SERIES 74757 AND 74758
6. DATE CODE LOCATION SHOWN. DATE CODE FORMAT: DDD Y
 DDD = DAY OF THE YEAR, Y = YEAR

76871-1402 SHOWN
UP / DOWN
LIGHTPIPE



76871-1401
AIRFLOW ONLY
NO LIGHTPIPE



76871-1403
DOWN / UP
LIGHTPIPE

PART NUMBER	AIRFLOW / LIGHTPIPE OPTION
768711401	AIRFLOW ONLY, NO LIGHTPIPE
768711402	UP / DOWN LIGHTPIPE INDICATOR
768711403	DOWN / UP LIGHTPIPE INDICATOR

ADDED PIN ASSIGNMENT LABELS	QUALITY SYMBOLS
EC NO: UCP2014-1018	▽=0
DRWN:HAVERY 2013/09/03	▽=0
CHKD: APPR:MBANAKIS 2013/09/04	▽=0
REV	DESCRIPTION

GENERAL TOLERANCES (UNLESS SPECIFIED)	
	mm INCH
4 PLACES ± ---	± ---
3 PLACES ± ---	± ---
2 PLACES ± 0.13	± ---
1 PLACE ± 0.25	± ---
0 PLACE ± ---	± ---
ANGULAR ±1/2°	
DRAFT WHERE APPLICABLE MUST REMAIN WITHIN DIMENSIONS	

DIMENSION STYLE MM ONLY	
DRAWN BY	DATE
JKACHLIC	2012/08/09
CHECKED BY	DATE
APPROVED BY	DATE
MBANAKIS	2012/08/22
MATERIAL NO.	
SEE CHART	

SCALE 2:1	DESIGN UNITS METRIC	THIRD ANGLE PROJECTION
TITLE QSFP+ 2X1 W/EMI SPRINGS		
DOCUMENT NO. SD-76871-1400		SHEET NO. 1 OF 3
THIS DRAWING CONTAINS INFORMATION THAT IS PROPRIETARY TO MOLEX INCORPORATED AND SHOULD NOT BE USED WITHOUT WRITTEN PERMISSION		

13 12 11 10 9 8 7 6 5 4 3 2 1

J I H G F E D C B A

∅ 1.05 ± 0.05 (10X)
FINISH HOLE

⊕ ∅ 0.08 (M) B C

∅ 2.50 ± 0.05 (2X)
DRILL HOLE

⊕ ∅ 0.08 (M) B C

FRONT EDGE OF BOARD

B

19.00

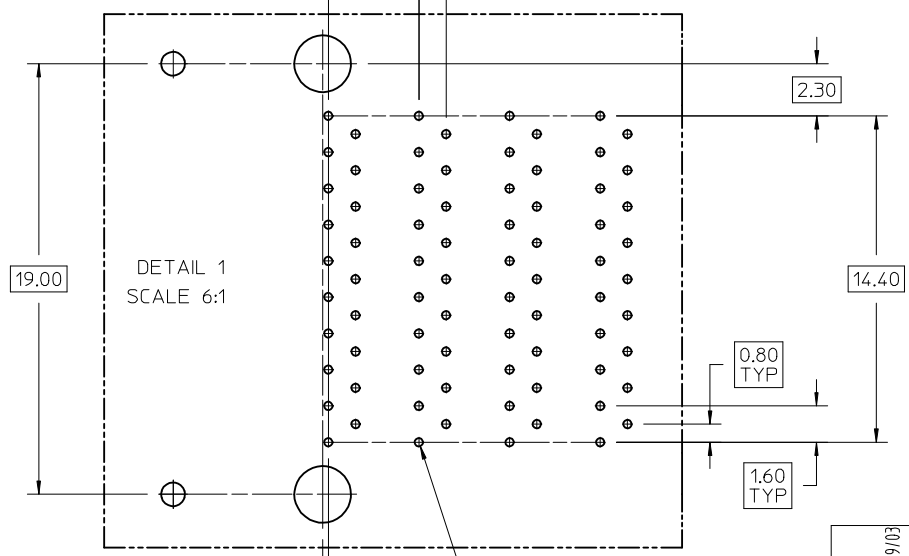
C

48.95 ± 0.10

SEE DETAIL 1

4.00 (3X)
1.20 (4X)

9.00 (3X)
10.70
6.60



DETAIL 1
SCALE 6:1

∅ 0.37 ± 0.05 (76X)
FINISH HOLE

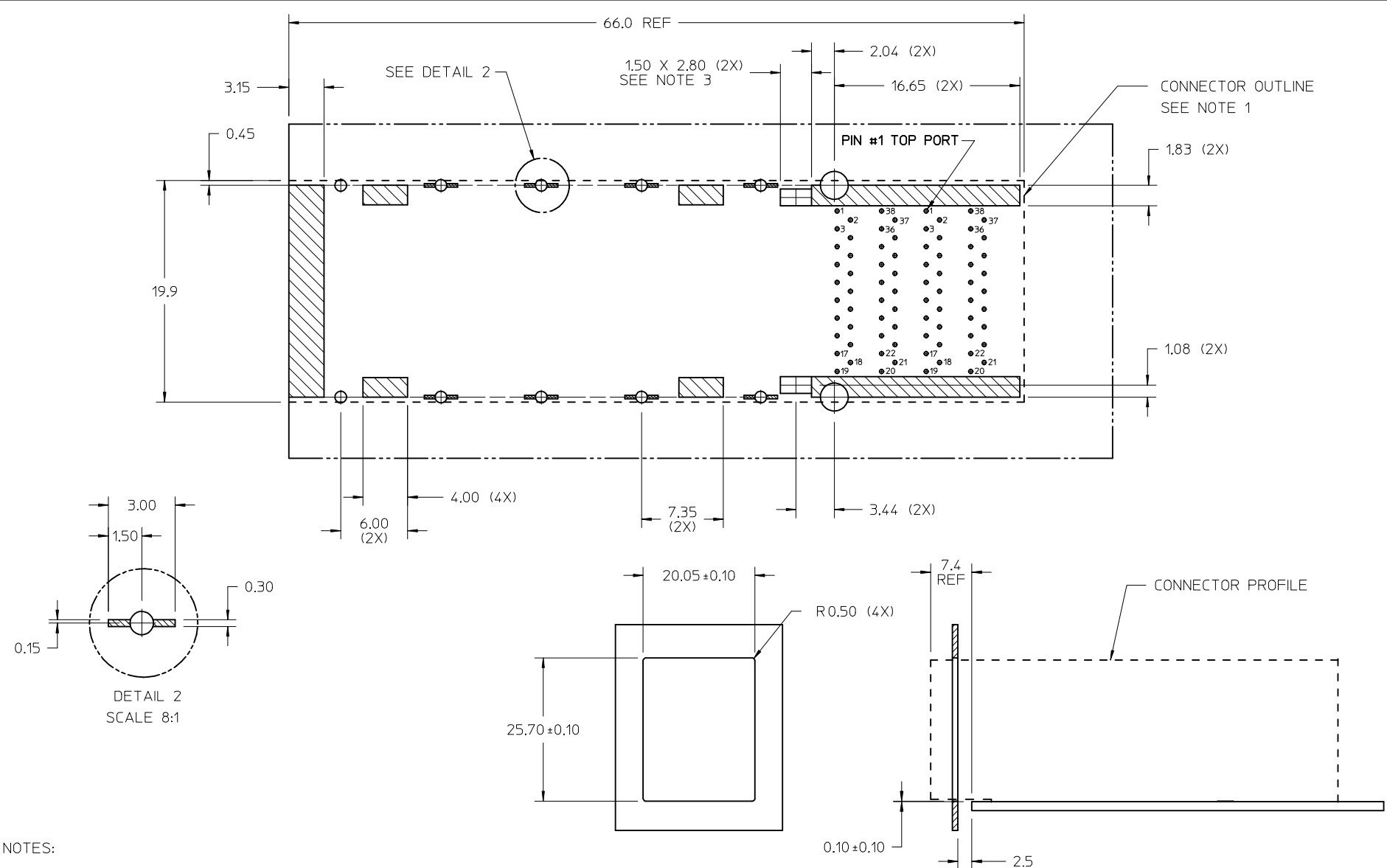
⊕ ∅ 0.08 (M) B C

SEE SHEET 1 EC NO: UCP2014-1018 DRAWN BY: DRWINHAVERY CHKD: MBANAKIS APPR: MBANAKIS	2013/09/03	2013/09/04
	DESCRIPTION	
	REV	

QUALITY SYMBOLS	▽=0	
	▽=0	
	▽=0	
	▽=0	
GENERAL TOLERANCES (UNLESS SPECIFIED)		
	mm	INCH
4 PLACES	± 0.10	± 0.004
3 PLACES	± 0.15	± 0.006
2 PLACES	± 0.20	± 0.008
1 PLACE	± 0.25	± 0.010
0 PLACE	± 0.30	± 0.012
ANGULAR ±1/2°		
DRAFT WHERE APPLICABLE MUST REMAIN WITHIN DIMENSIONS		

DIMENSION STYLE MM ONLY	
DRAWN BY	DATE
JKACHLIC	2012/08/09
CHECKED BY	DATE
APPROVED BY	DATE
MBANAKIS	2012/08/22
MATERIAL NO.	
SEE CHART	

SCALE 4:1	DESIGN UNITS METRIC	THIRD ANGLE PROJECTION
TITLE QSFP+ 2X1 W/EMI SPRINGS		
DOCUMENT NO. SD-76871-1400		SHEET NO. 2 OF 3
THIS DRAWING CONTAINS INFORMATION THAT IS PROPRIETARY TO MOLEX INCORPORATED AND SHOULD NOT BE USED WITHOUT WRITTEN PERMISSION		



NOTES:

1. THE ENTIRE AREA UNDER THE CONNECTOR IS A COMPONENT KEEP-OUT ZONE
2. CROSS HATCHED AREAS INDICATE PLACES WHERE THE PLASTIC HOUSING AND METAL CAGE MAY BE IN CONTACT WITH THE PCB SURFACE. THESE AREAS ARE TRACE KEEP-OUT ZONES
3. THESE 2 RECTANGULAR ZONES ARE FOR LED PLACEMENT. LED HEIGHT SHOULD NOT EXCEED 0.8 AND PLACEMENT SHOULD BE CENTERED WITHIN THIS LED KEEP-IN ZONE
4. RECOMMENDED LED CHIP PACKAGE SIZE IS 0805

PANEL OPENING REQUIREMENTS

SEE SHEET 1 EC NO: UCP2014-1018 DRWN:HAVERY 2013/09/03 CHKD: MBANAKIS 2013/09/04 APPR:MBANAKIS	DESCRIPTION 2013/09/04	QUALITY SYMBOLS	GENERAL TOLERANCES (UNLESS SPECIFIED)	DIMENSION STYLE MM ONLY	SCALE 2:1	DESIGN UNITS METRIC	THIRD ANGLE PROJECTION	
		▽=0	mm INCH	DRAWN BY JKACHLIC	DATE 2012/08/09	TITLE QSFP+ 2X1 W/EMI SPRINGS		
		▽=0	4 PLACES ± --- ± ---	CHECKED BY	DATE			
		▽=0	3 PLACES ± --- ± ---	APPROVED BY MBANAKIS	DATE 2012/08/22			
		2 PLACES ± 0.13 ± ---	MATERIAL NO.		DOCUMENT NO.	SHEET NO.		
		1 PLACE ± 0.25 ± ---	DRAFT WHERE APPLICABLE MUST REMAIN WITHIN DIMENSIONS		SEE CHART SD-76871-1400		3 OF 3	
		0 PLACE ± --- ± ---	THIS DRAWING CONTAINS INFORMATION THAT IS PROPRIETARY TO MOLEX INCORPORATED AND SHOULD NOT BE USED WITHOUT WRITTEN PERMISSION					