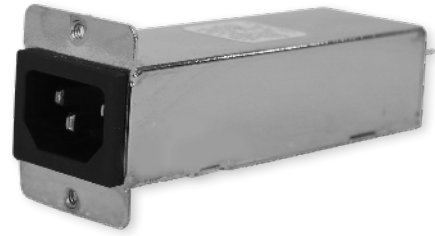


# RPM9000

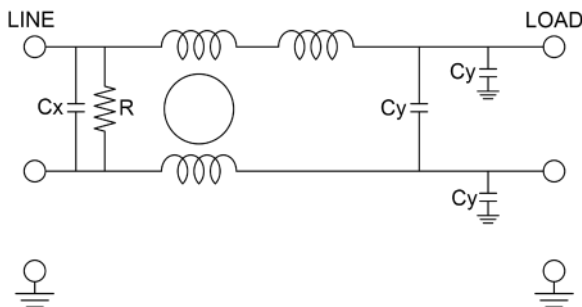
## MIL/COTS AC, SINGLE PHASE IEC INLET EMI POWER LINE FILTER

### FEATURES

- » Rated currents include **5A, 10A, 15A and 20A**
- » Dual Stage Line Filter
- » Available with **S** (studs)
- » Agency Approved to RoHS
- » Y-cap value can be adjusted to fit specification



### ELECTRICAL SCHEMATIC



### SPECIFICATIONS

OPERATING FREQUENCY	50/60 Hz
MAX. OPERATING VOLTAGE	250 VAC +10%
AMBIENT TEMPERATURE	-25 TO 55°C
CLIMATIC CATEGORY	25/100/21
TERMINALS (-T)	QD TABS: 0.25
IEC INLET	5-15A (C-14), 20A (C-20)
TYP. WEIGHT, LBS (KG)	0.5 - 0.8(0.22 - 0.36)

### TYPICAL LEAKAGE CURRENT

@ 250 VAC 60 Hz	0 - 3.50 mA Max.
-----------------	------------------

### HIPOT RATINGS

LINE TO GROUND	1800 VDC
----------------	----------

### TYPICAL APPLICATIONS

- ✓ Mil-461/ DO-160

### HOW TO ORDER

RPM9000 - Y - Z

Z = TERMINAL (-T)  
X = RATED CURRENT  
RPM9000=FILTER SERIES

**NOTE:** USE ANY COMBINATION OF -X (AMPS) WITH ANY -Y RATINGS

E.G. **RPM9000-5-QD** (5 AMPS)

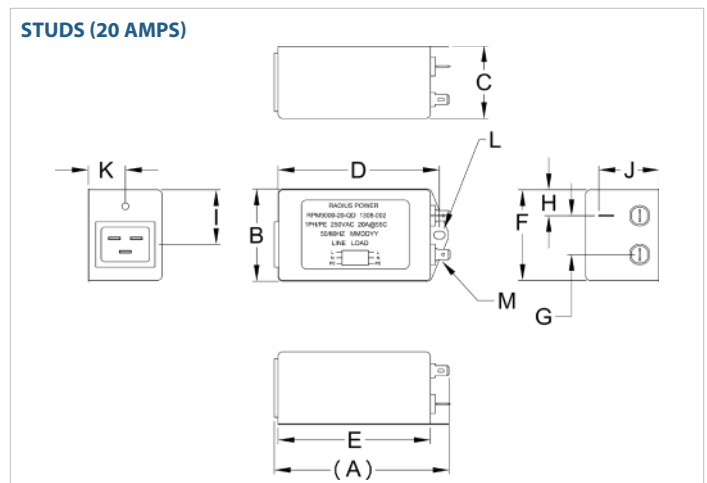
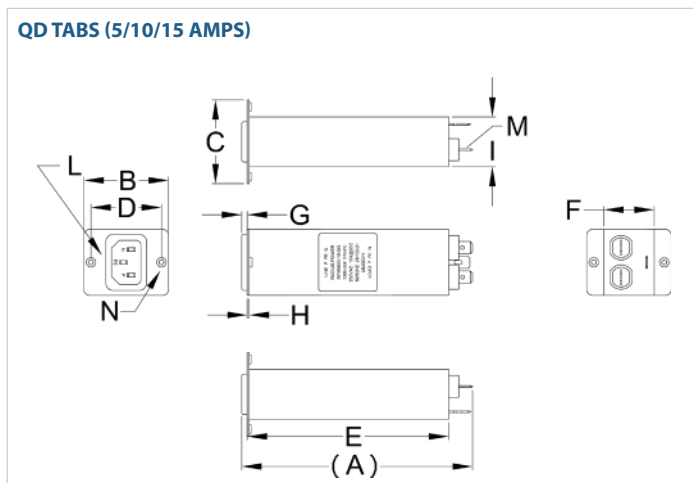
For **X** and **Y** options see product specification table.

# RPM9000

## MIL/COTS AC, SINGLE PHASE IEC INLET EMI POWER LINE FILTER

MODEL NO.	RATED CURRENT, A @ 40° C	LEAKAGE CURRENT, mA @ 250V AC, 60 Hz	TERMINAL OPTIONS			MAX. DIMENSIONS" (MM)		
			(QD) OUTPUT	(C-14 INLET) OUTPUT	(C-20 INLET) OUTPUT	WIDTH	(LENGTH)	HEIGHT
RPM9000-5-QD	5	3.50	✓	✓		1.68"(43)	4.58"(116)	1.68"(43)
RPM9000-10-QD	10	3.50	✓	✓		1.68"(43)	4.58"(116)	1.68"(43)
RPM9000-15-QD	15	3.50	✓	✓		1.68"(43)	4.58"(116)	1.68"(43)
RPM9000-20-QD	20	3.50	✓		✓	2.24"(57)	4.20"(107)	1.81"(46)

### RPM9000 MECHANICAL OUTLINES (MM)



SERIES	(A)	B	C	D	E	F	G	H	I	J	K	L	M	N
<b>QD TABS (5/10/15A)</b>	4.58" (116)	1.68" (43)	1.68" (43)	1.40" (36)	4.00" (102)	1.00" (25)	0.11" (3)	0.04" (1)	1.00" (25)	N/A	N/A	IN ALWAYS 0711-1-PS	0.25", 3x (QD, MALE, 6.35, 3x)	INSERT, SMPS-632, 2x
<b>QD TABS (20A)</b>	4.20" (107)	2.24" (57)	1.81" (46)	3.88" (99)	3.66" (93)	2.24" (57)	0.94" (24)	0.63" (16)	1.33" (34)	1.45" (37)	0.89" (23)	Ø 0.26"x4.8 (Ø 6.8x4.8)	0.25", 3x (QD, 6.35, 3x)	N/A

TYPICAL TOLERANCE: +/-0.02" (0.50MM)

# RPM9000

MIL/COTS **AC**, SINGLE PHASE IEC INLET EMI POWER LINE FILTER

## TYPICAL INSERTION LOSS, dB (50/50 Ohm)

Amps	Freq (MHz)	0.15	0.5	1.0	10	30
5	CM (dB)	38	50	60	50	45
	DM (dB)	35	28	45	60	60
10	CM (dB)	38	50	60	50	45
	DM (dB)	35	28	45	60	60
15	CM (dB)	38	50	60	50	45
	DM (dB)	35	28	45	60	60
20	CM (dB)	38	50	60	50	45
	DM (dB)	35	28	45	60	60