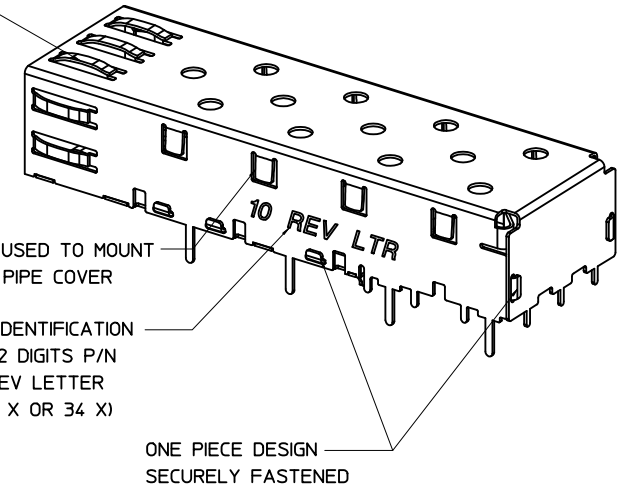


SPRING FINGER GASKET WITH TWO POINTS OF CONTACT. COMPLIES WITH (SFP) MSA BOARD AND BEZEL LOCATIONS.



MOLEX PN	PLATING
747370010	PRE-PLATED WITH NICKEL
747370034	POST PLATED WITH MATTE TIN

NOTES:

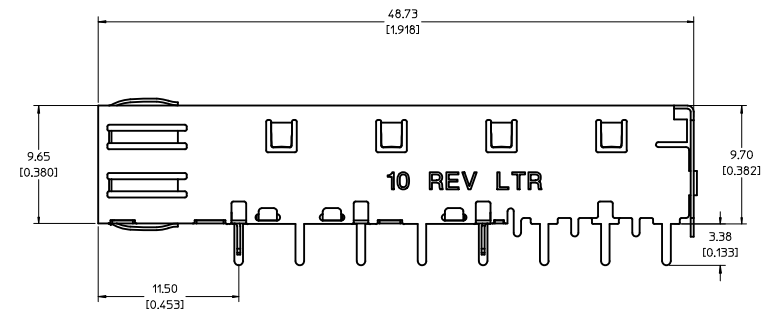
- THIS CAGE IS FOR SINGLE SIDED USE ONLY.
- CAN BE USED WITH THE FOLLOWING LIGHT PIPE PART NUMBERS:

747260001 - LIGHT PIPE FROM BACK TO TOP
(REFER TO DOCUMENT SD-74726-001)

747260002 - LIGHT PIPE FROM SIDE TO TOP
(REFER TO DOCUMENT SD-74726-002)

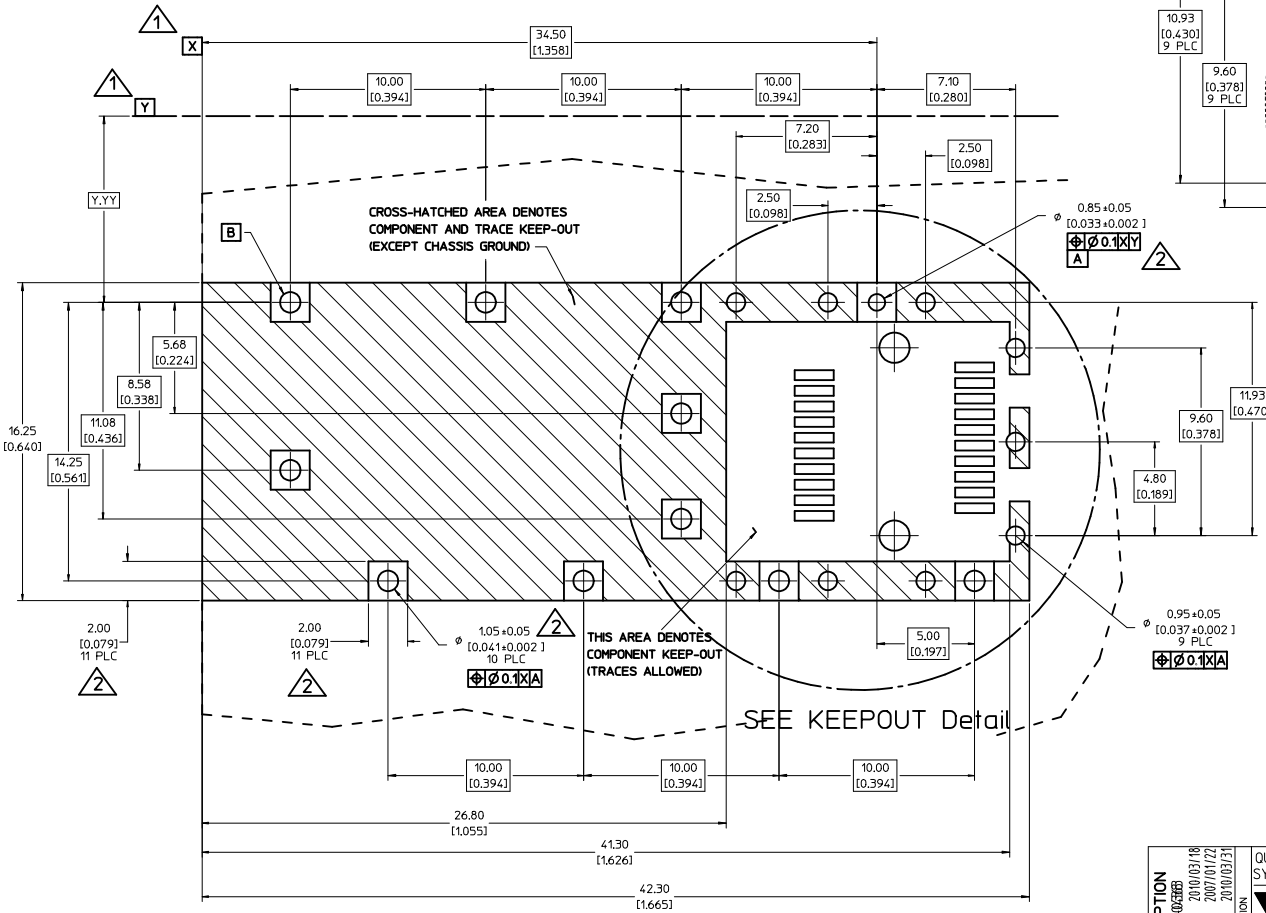
3. MATERIAL: COPPER ALLOY

4. THIS PART MEETS THE RESTRICTION OF HAZARDOUS SUBSTANCES IN ELECTRICAL AND ELECTRONIC EQUIPMENT (ROHS) DIRECTIVE (2002/95/EC).



ADDED TIN OPTION EC NO: USY2007-02388 DRAWN: MCKERVEY 2010/03/18 CHECKED: RMAHMOOD 2007/01/22 APPROVED: KJANOTA 2010/03/31	QUALITY SYMBOLS ▽=0 ▽=0	GENERAL TOLERANCES (UNLESS SPECIFIED): <table border="1"> <thead> <tr> <th></th> <th>mm</th> <th>INCH</th> </tr> </thead> <tbody> <tr> <td>4 PLACES</td> <td>±.005</td> <td>±.0005</td> </tr> <tr> <td>3 PLACES</td> <td>±.005</td> <td>±.0005</td> </tr> <tr> <td>2 PLACES</td> <td>±0.13</td> <td>±.01</td> </tr> <tr> <td>1 PLACE</td> <td>±0.25</td> <td>±.01</td> </tr> </tbody> </table> ANGULAR ± 1°		mm	INCH	4 PLACES	±.005	±.0005	3 PLACES	±.005	±.0005	2 PLACES	±0.13	±.01	1 PLACE	±0.25	±.01	DIMENSION STYLE MM/IN	SCALE 5:1	DESIGN UNITS METRIC	THIRD ANGLE PROJECTION
		mm	INCH																		
	4 PLACES	±.005	±.0005																		
	3 PLACES	±.005	±.0005																		
2 PLACES	±0.13	±.01																			
1 PLACE	±0.25	±.01																			
DRAWN BY CCOX 2007/01/22	CHECKED BY RMAHMOOD 2007/01/22	APPROVED BY KJANOTA 2010/03/31	MATERIAL NO. SEE CHART	DOCUMENT NO. SD-74737-010	TITLE SFP ONE PIECE CAGE W/SPRING FINGERS SOLDER POSTS	SHEET NO. 1 OF 4															
DRAFT WHERE APPLICABLE MUST REMAIN WITHIN DIMENSIONS						MOLEX INCORPORATED															
THIS DRAWING CONTAINS INFORMATION THAT IS PROPRIETARY TO MOLEX INCORPORATED AND SHOULD NOT BE USED WITHOUT WRITTEN PERMISSION																					

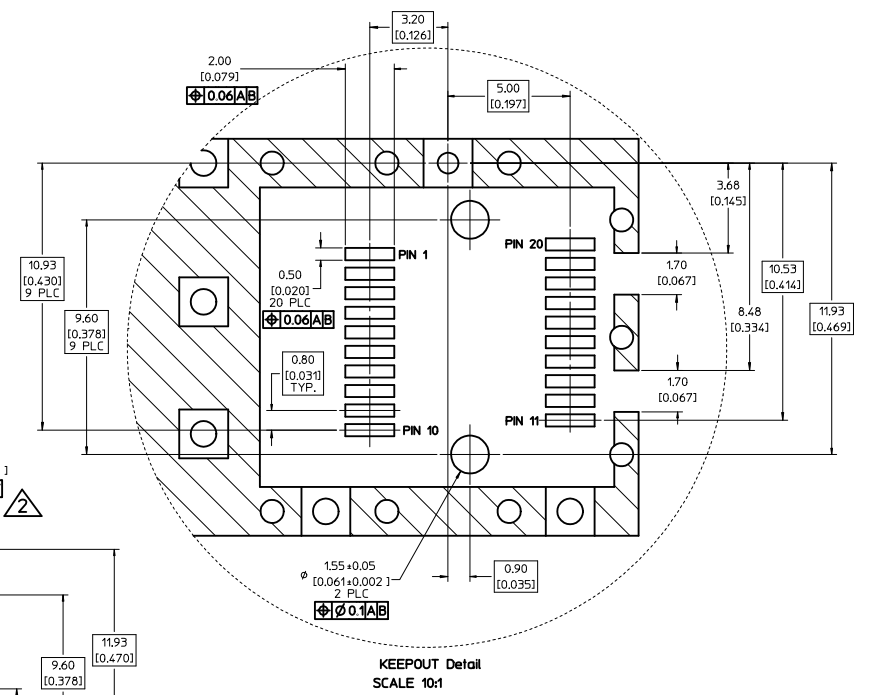
- 1 DATUM AND BASIC DIMENSIONS ESTABLISHED BY CUSTOMER.
- 2 PADS AND VIAS ARE CHASSIS GROUND.
- 3 HOLE LAYOUT SHOWN IS FOR SINGLE SIDED MOUNTING ONLY.
- 4 CONNECTOR PAD LAYOUT PER SFP MSA, WILL ACCOMMODATE MOLEX CONNECTOR SERIES 74441 OR EQUIVALENT.



CROSS-HATCHED AREA DENOTES COMPONENT AND TRACE KEEP-OUT (EXCEPT CHASSIS GROUND)

THIS AREA DENOTES COMPONENT KEEP-OUT (TRACES ALLOWED)

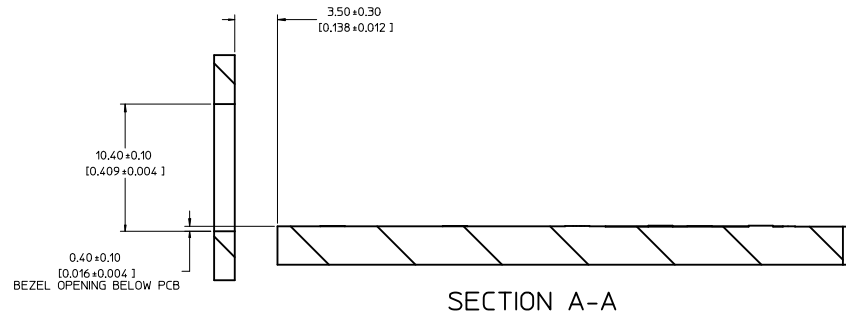
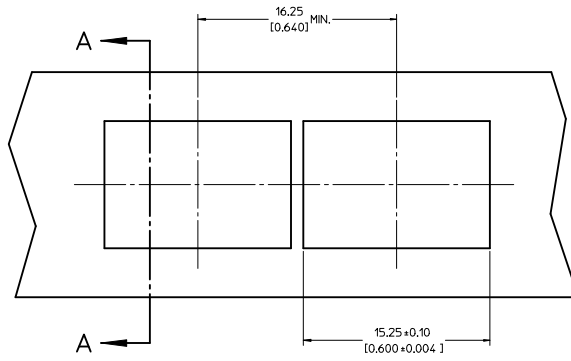
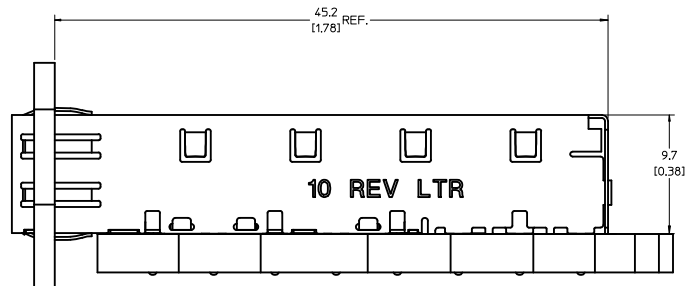
SEE KEEP-OUT Detail



KEEP-OUT Detail
SCALE 10:1

ADDED TIN OPTION EC NO: US2007-00368 DRAWN BY: MCKERVEY 2010/03/18 CHECKED BY: CHYKORAHMOOD 2007/01/22 APPR: K JANOTA 2010/03/31	QUALITY SYMBOLS	GENERAL TOLERANCES (UNLESS SPECIFIED)	DIMENSION STYLE	SCALE	DESIGN UNITS	THIRD ANGLE PROJECTION	
	$\nabla=0$ $\nabla=0$	mm INCH 4 PLACES ± --- ± --- 3 PLACES ± --- ± .005 2 PLACES ± 0.13 ± .01 1 PLACE ± 0.25 ± --- ANGULAR ± 1 °	MM/IN	8:1	METRIC		
	DRAWN BY: MCKERVEY 2010/03/18 CHECKED BY: CHYKORAHMOOD 2007/01/22 APPR: K JANOTA 2010/03/31	DRAWN BY: CCOX 2007/01/22 CHECKED BY: RAHMOOD 2007/01/22 APPROVED BY: K JANOTA 2010/03/31	DATE: 2007/01/22 DATE: 2007/01/22 DATE: 2010/03/31	DATE: 2007/01/22 DATE: 2007/01/22 DATE: 2010/03/31	DATE: 2007/01/22 DATE: 2007/01/22 DATE: 2010/03/31	DATE: 2007/01/22 DATE: 2007/01/22 DATE: 2010/03/31	DATE: 2007/01/22 DATE: 2007/01/22 DATE: 2010/03/31
	MATERIAL NO: SEE CHART DOCUMENT NO: SD-74737-010 SHEET NO: 2 OF 4	TITLE: SFP ONE PIECE CAGE W/SPRING FINGERS SOLDER POSTS MOLEX INCORPORATED	DATE: 2007/01/22 DATE: 2007/01/22 DATE: 2010/03/31	DATE: 2007/01/22 DATE: 2007/01/22 DATE: 2010/03/31	DATE: 2007/01/22 DATE: 2007/01/22 DATE: 2010/03/31	DATE: 2007/01/22 DATE: 2007/01/22 DATE: 2010/03/31	DATE: 2007/01/22 DATE: 2007/01/22 DATE: 2010/03/31

20 19 18 17 16 15 14 13 12 11 10 9 8 7 6 5 4 3 2 1



ADDED TIN OPTION EC NO: USY2007-00388B DRAWN: MCKERVEY 2010/03/18 CHECKED: RMAHMOOD 2007/01/22 APPR: K.JANOTA 2010/03/31	QUALITY SYMBOLS	GENERAL TOLERANCES (UNLESS SPECIFIED)	DIMENSION STYLE	SCALE	DESIGN UNITS	THIRD ANGLE PROJECTION
	▽=0 ▽=0	mm INCH 4 PLACES ± --- ± --- 3 PLACES ± --- ± .005 2 PLACES ± 0.13 ± .01 1 PLACE ± 0.25 ± --- ANGULAR ± 1 °	MM/IN	5:1	METRIC	DRAWN BY: CCOX DATE: 2007/01/22 CHECKED BY: RMAHMOOD DATE: 2007/01/22 APPROVED BY: K.JANOTA DATE: 2010/03/31
	DESCRIPTION	DRAFT WHERE APPLICABLE MUST REMAIN WITHIN DIMENSIONS	SEE CHART	MOLEX INCORPORATED MOLEX INCORPORATED		TITLE
	SFP ONE PIECE CAGE W/SPRING FINGERS SOLDER POSTS	MATERIAL NO.	DOCUMENT NO.	SHEET NO.		
			SD-74737-010	3 OF 4		

19 18 17 16 15 14 13 12 11 10 9 8 7 6 5 4 3 2 1

