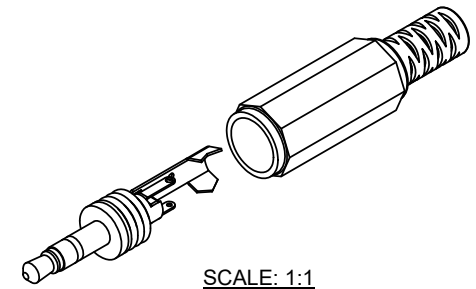
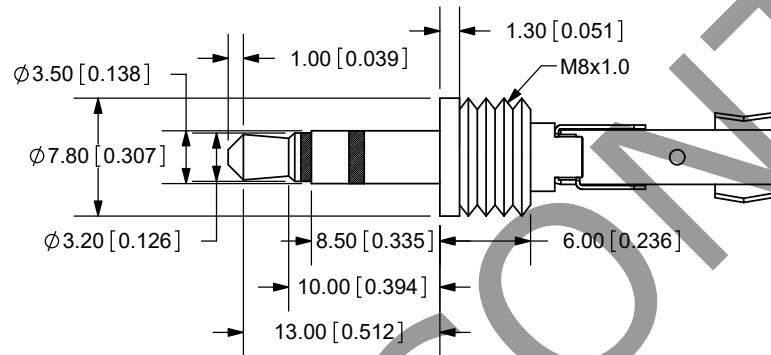
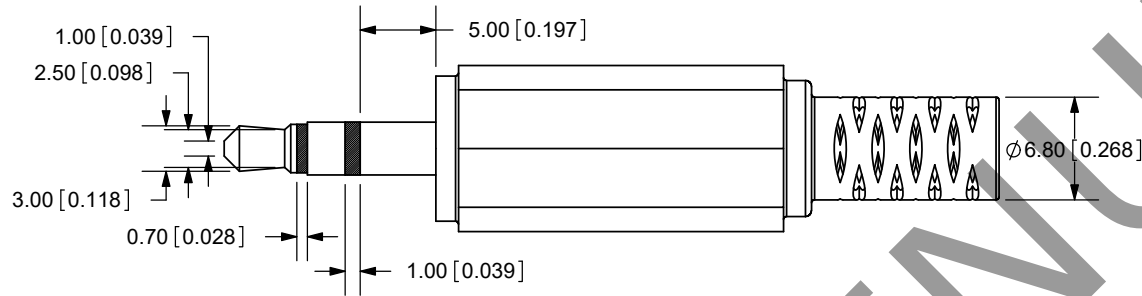


| REV. | DESCRIPTION | DATE |
|------|-------------------|------------|
| A | NEW DRAWING | 1/9/2008 |
| B | updated datasheet | 02/22/2019 |



SCALE: 1:1

TOLERANCE:
±0.3mm UNLESS OTHERWISE
SPECIFIED



SPECIFICATIONS:
CONTACT RESISTANCE: 30m OHMS MAX
INSULATION RESISTANCE: 100 M OHMS MIN
VOLTAGE RATING: 24 VDC / 1 A

| | MATERIAL | PLATING |
|----------------|----------|-------------|
| RING TERMINAL | Brass | Nickel |
| TIP TERMINAL | Brass | Nickel |
| EARTH TERMINAL | Brass | Nickel |
| SLEEVE | Brass | Nickel |
| CONTACT HEAD | Brass | Nickel |
| INSULATOR | POM | black color |
| BODY | PE | black color |



CUI INC

20050 SW 112th Ave.
Tualatin, OR 97062
Phone: 503-612-2300
800-275-4899
Fax: 503-612-2383
Website: www.cui.com

| | | | |
|-----------|-------------------|--------------|-------------|
| TITLE: | 3.5mm STEREO PLUG | REV: | B |
| PART NO. | SP-3501 | UNITS: | MM [INCHES] |
| DRAWN BY: | ZRJ | APPROVED BY: | |
| | | SCALE: | 2:1 |

PC FILE NAME:
SP-3501

COPYRIGHT 2008 BY CUI INC.