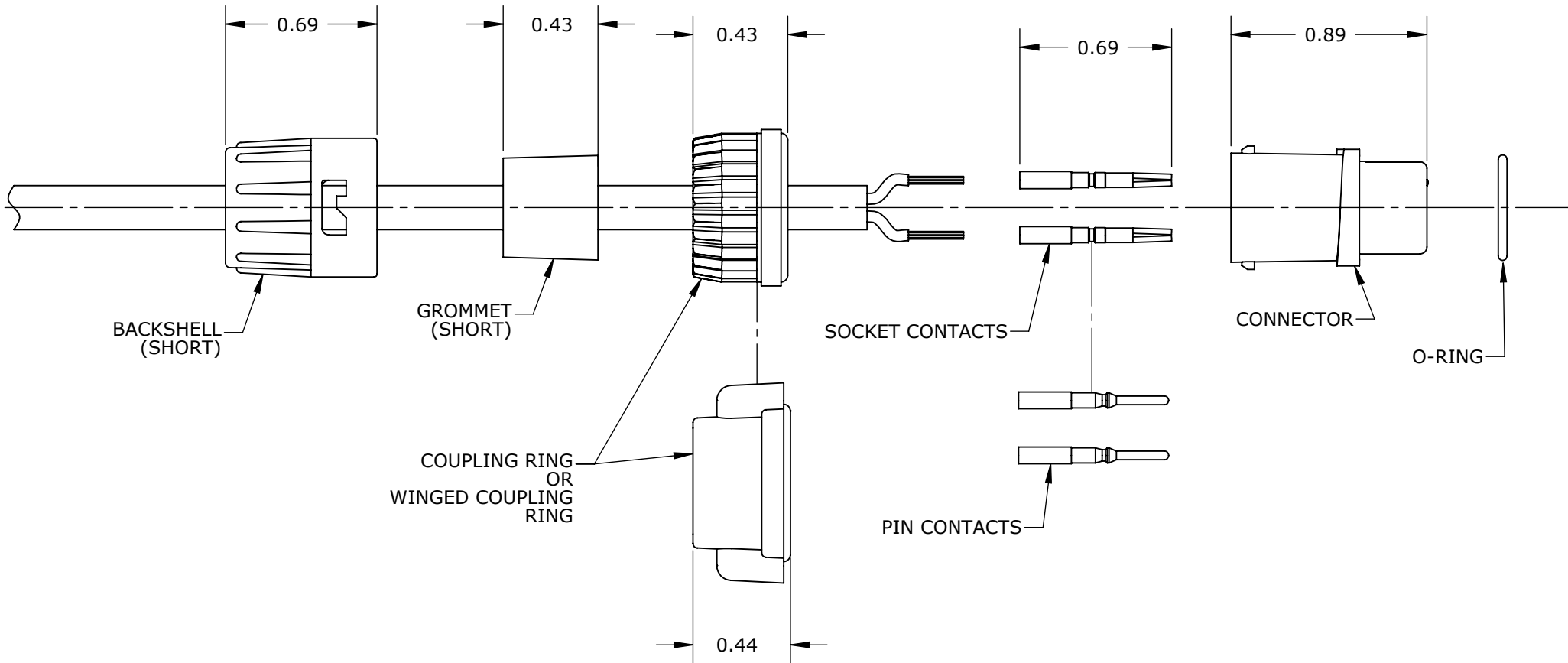


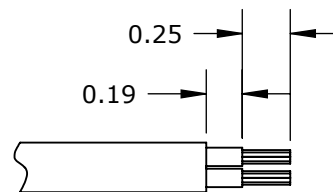
INSTRUCTION SHEET

MINI-CON-X SERIES


CABLE CONNECTOR ASSEMBLY



NOTES:
1. ALL DIMENSIONS ARE FOR REFERENCE ONLY.



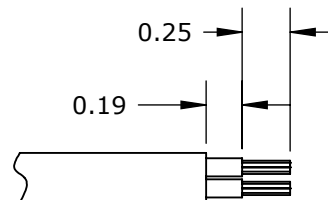
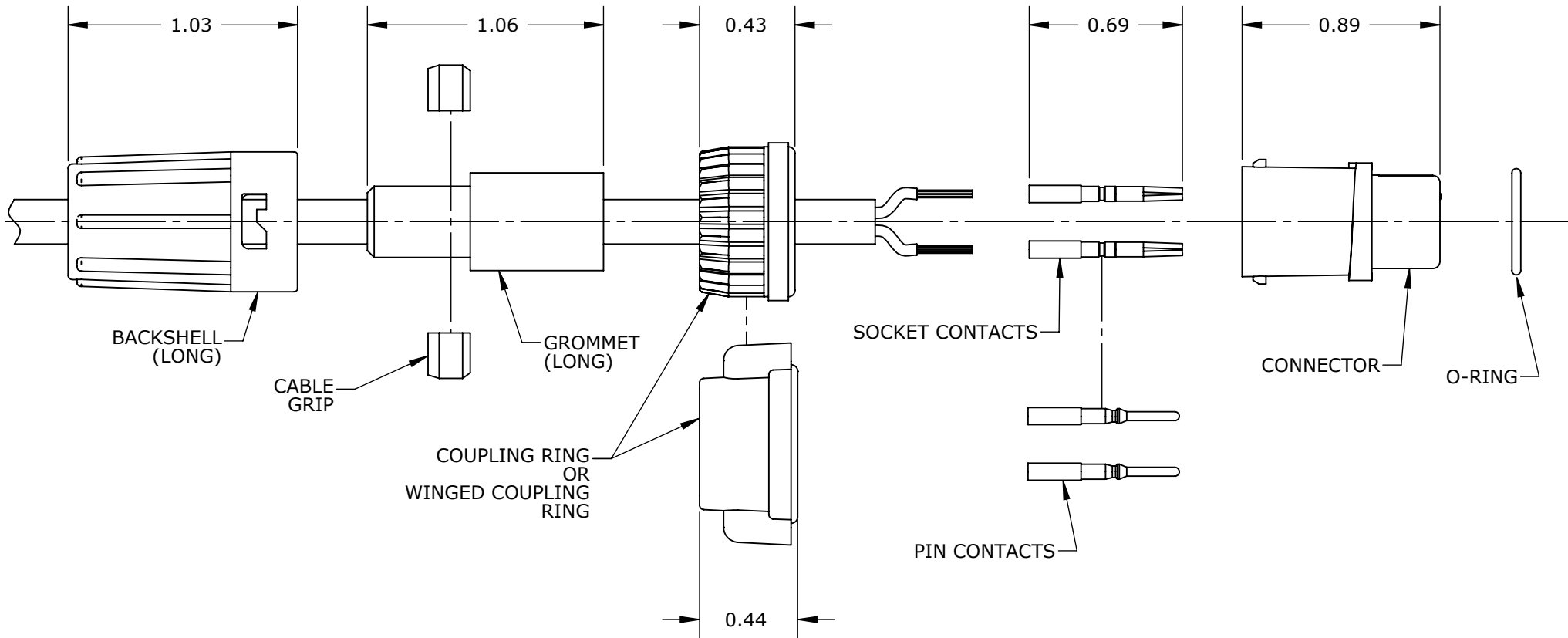
RECOMMENDED STRIPPING LENGTH

A	BZ	04-21-09	DRAWING CREATED PER DOR 09-1367KL
REV.	INIT.	DATE	DESCRIPTION
CHECKED BY:			 601 E. WILDWOOD VILLA PARK, IL 60181
APPROVED BY:			
FILE:	LAB-0012	SHEET	1 OF 3

INSTRUCTION SHEET


MINI-CON-X SERIES

CABLE CONNECTOR ASSEMBLY



RECOMMENDED STRIPPING LENGTH

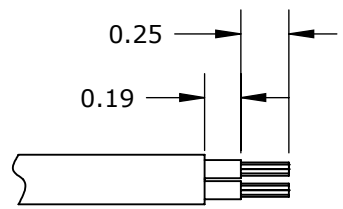
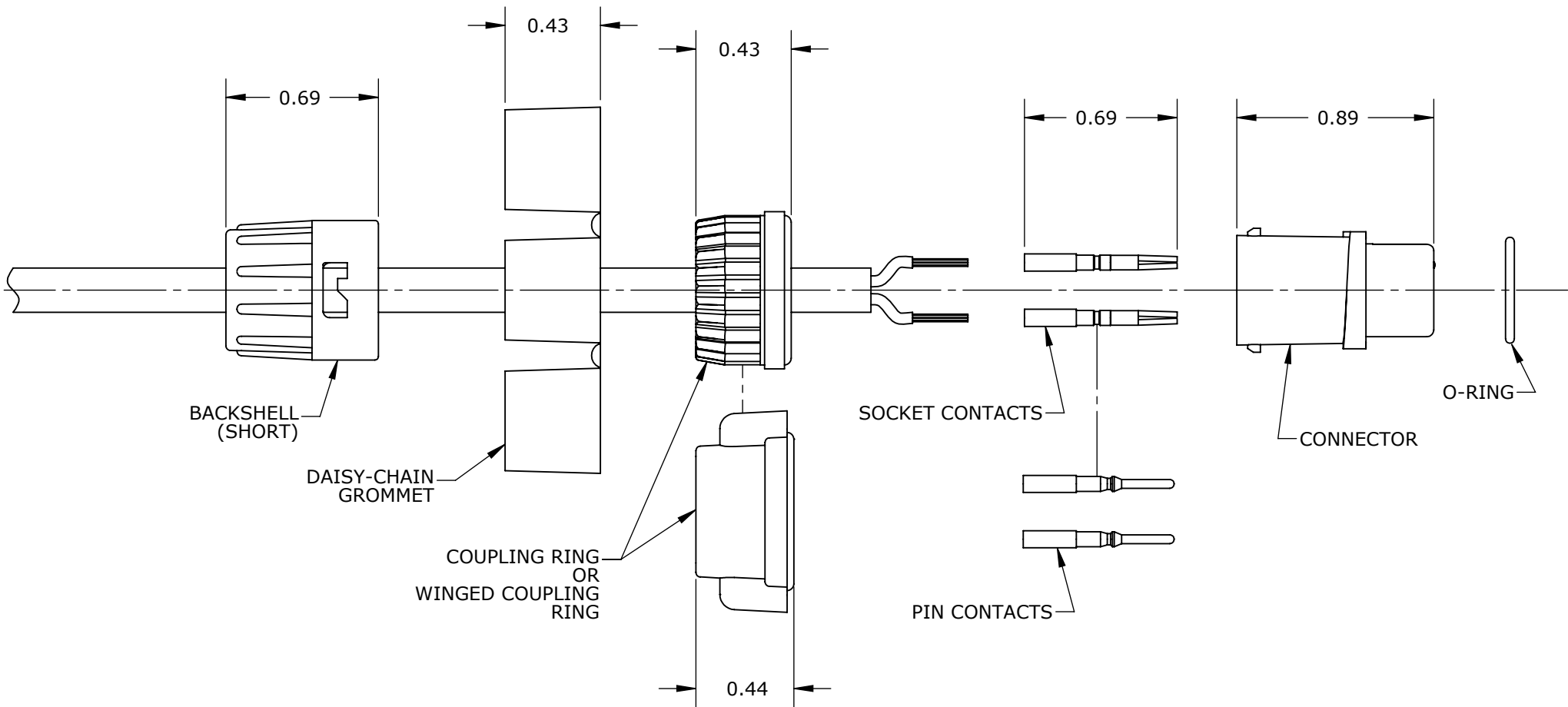
NOTES:
1. ALL DIMENSIONS ARE FOR REFERENCE ONLY.

A	BZ	04-21-09	DRAWING CREATED PER DOR 09-1367KL
REV.	INIT.	DATE	DESCRIPTION
CHECKED BY:			 601 E. WILDWOOD VILLA PARK, IL 60181
APPROVED BY:			
FILE:	LAB-0012	SHEET 2 OF 3	

INSTRUCTION SHEET


MINI-CON-X SERIES

CABLE CONNECTOR ASSEMBLY



RECOMMENDED STRIPPING LENGTH

NOTES:
1. ALL DIMENSIONS ARE FOR REFERENCE ONLY.

A	BZ	04-21-09	DRAWING CREATED PER DOR 09-1367KL
REV.	INIT.	DATE	DESCRIPTION
CHECKED BY:			 601 E. WILDWOOD VILLA PARK, IL 60181
APPROVED BY:			
FILE:	SHEET		
LAB-0012	3 OF 3		