

MATERIALS AND FINISHES

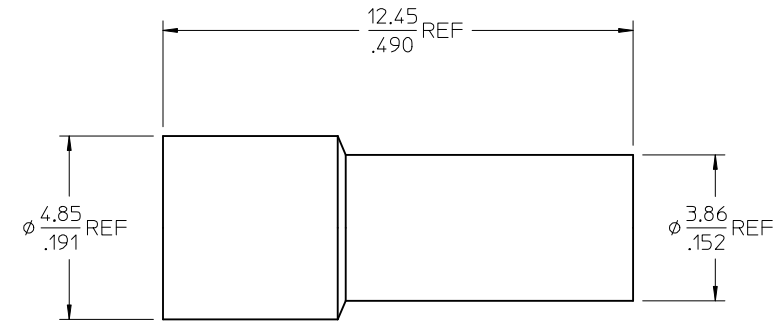
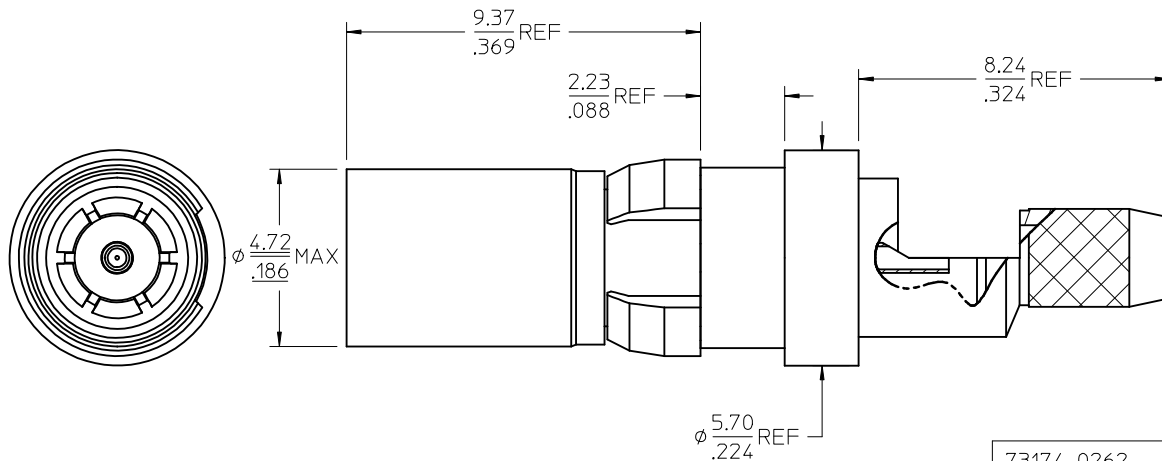
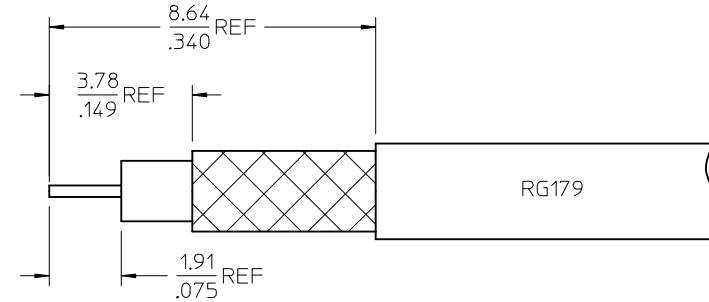
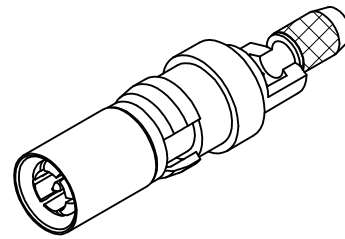
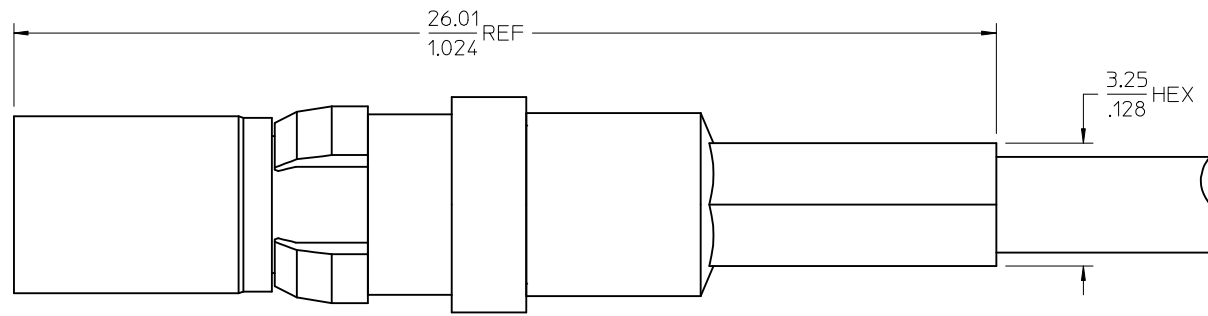
BODY, CRIMP TUBE, REAR BODY: BRASS  
PLATED SEE TABLE

OUTER CONTACT: BERYLLIUM COPPER  
PLATED GOLD

CONTACT: BRASS  
PLATED GOLD

INSULATOR: TEFLON

RETAINING CLIP: BERYLLIUM COPPER  
PLATED NICKEL



PS-89675-345	PRODUCT SPECIFICATION
DIN 41626	INTERFACE
SPECIFICATION	DESCRIPTION

73174-0262	GOLD	ONE PIECE 73174-0260 PER BAG
73174-0261	NICKEL	TRAY
73174-0260	GOLD	TRAY
ASSY NO.	FINISH	PACKAGING

CHG: ADDED PS-89675-345 EWR RF15-E006	EC NO: URF2015-0014	2014/07/14
DRWN: YCHENG	CHKD:	
APPR: YCHENG	REV: B4	

QUALITY SYMBOLS	DESCRIPTION
▽=0	
▽=0	

GENERAL TOLERANCES (UNLESS SPECIFIED)
mm INCH
4 PLACES ± --- ± ---
3 PLACES ± --- ± ---
2 PLACES ± --- ± ---
1 PLACE ± --- ± ---
ANGULAR ± 2 °
DRAFT WHERE APPLICABLE MUST REMAIN WITHIN DIMENSIONS

DIMENSION STYLE	SCALE	DESIGN UNITS	THIRD ANGLE PROJECTION
MM/IN		METRIC	
DRAWN BY	DATE	TITLE	
GMH	2003/09/05	DIN 41626 PLUG STR RG179	
CHECKED BY	DATE	75 OHM / 75 OHM EWR2210	
TEF	2003/09/05	1.0/2.3-PC	
APPROVED BY	DATE		
GMH	2003/09/05		

MATERIAL NO.	DOCUMENT NO.	SHEET NO.
SEE TABLE	SD-73174-026	1 OF 1
THIS DRAWING CONTAINS INFORMATION THAT IS PROPRIETARY TO MOLEX INCORPORATED AND SHOULD NOT BE USED WITHOUT WRITTEN PERMISSION		