

## R95-116



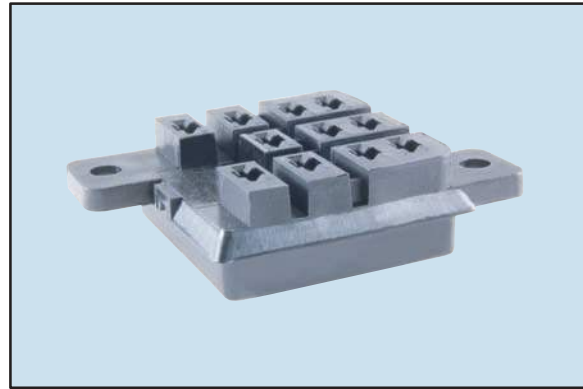
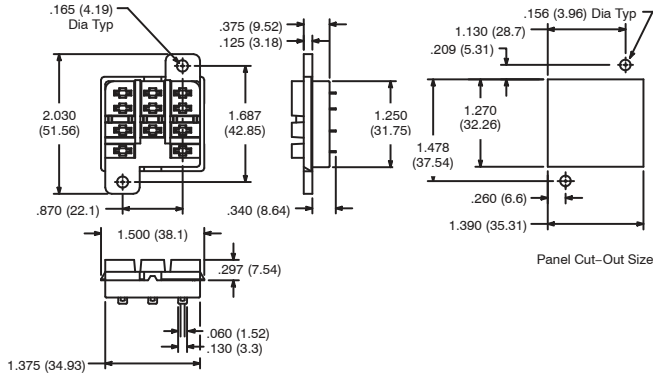
## 11-Pin Square Base Socket

### Features

- Panel Mount
- Solder Terminals
- Accepts .187" Blade Terminals
- SPDT, DPDT and 3PDT Applications

### Electrical Rating:

300 Volts, 10 Amps



## R95-117



## 14-Pin Miniature Socket

### Features

- Panel Mount
- DIN Rail Mountable
- Pressure Clamp Screws
- DPDT or 4PDT
- Hold down clip not supplied with socket, available separately (R95-001)

### Electrical Rating:

300 Volts, 10 Amps

