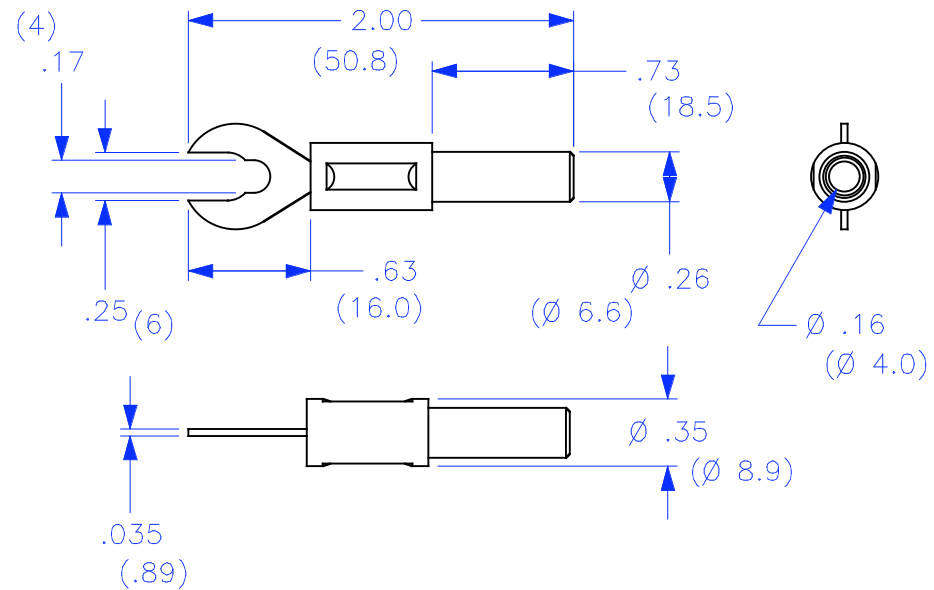


THIS IS ISSUED IN STRICT CONFIDENCE THAT IT IS NOT USED AS A BASIS FOR MANUFACTURE OR SALE AND THAT IT IS NOT COPIED, REPRINTED OR DISCLOSED TO A THIRD PARTY EITHER WHOLLY OR IN PART WITHOUT THE PRIOR WRITTEN CONSENT OF CAL TEST ELECTRONICS, INC.

REVISIONS			
REV.	DESCRIPTIONS	DATE	APPROVED
—	CLASS A RELEASED	7/12/99	

- ADAPTER, 6/4mm SPADE LUG WITH 4mm BANANA JACK.
- SPECIFICATIONS:
INSULATOR: POLYACETAL
SPADE BODY: BRASS, NICKEL PLATED
- RATING:
CURRENT: 36A MAX.
RESISTANCE: <1mΩ.
TEMPERATURE: -20° C TO +80° C.



PART NUMBER

CT2553-#

- COLOR:
- 0 — BLACK
 - 2 — RED
 - 4 — YELLOW
 - 5 — GREEN
 - 6 — BLUE
 - 9 — WHITE

THIRD ANGLE PROJECTION		UNLESS OTHERWISE SPECIFIED DIMENSIONS ARE IN INCHES TOLERANCES ARE: FRACTIONS DECIMALS ± 1/32 .XX ± .02 .XXX ± .005 DO NOT SCALE DRAWING	CONTRACT NO.		Cal Test Electronics 22820 Savi Ranch Parkway Yorba Linda, CA 92887-4610	
			APPROVALS DATE DRAWN WDH 7/12/99 CHECKED ENGR. DESIGN ACTIVITY		TITLE 6/4mm SPADE LUG ADAPTER w/4mm JACK	
MATERIAL		FINISH		SIZE A	CAGE CODE 43F45	DWG. NO. P255300
NEXT ASSY	USED ON	APPLICATION		SCALE 1:1	REV. —	
				SHEET		1 OF 1