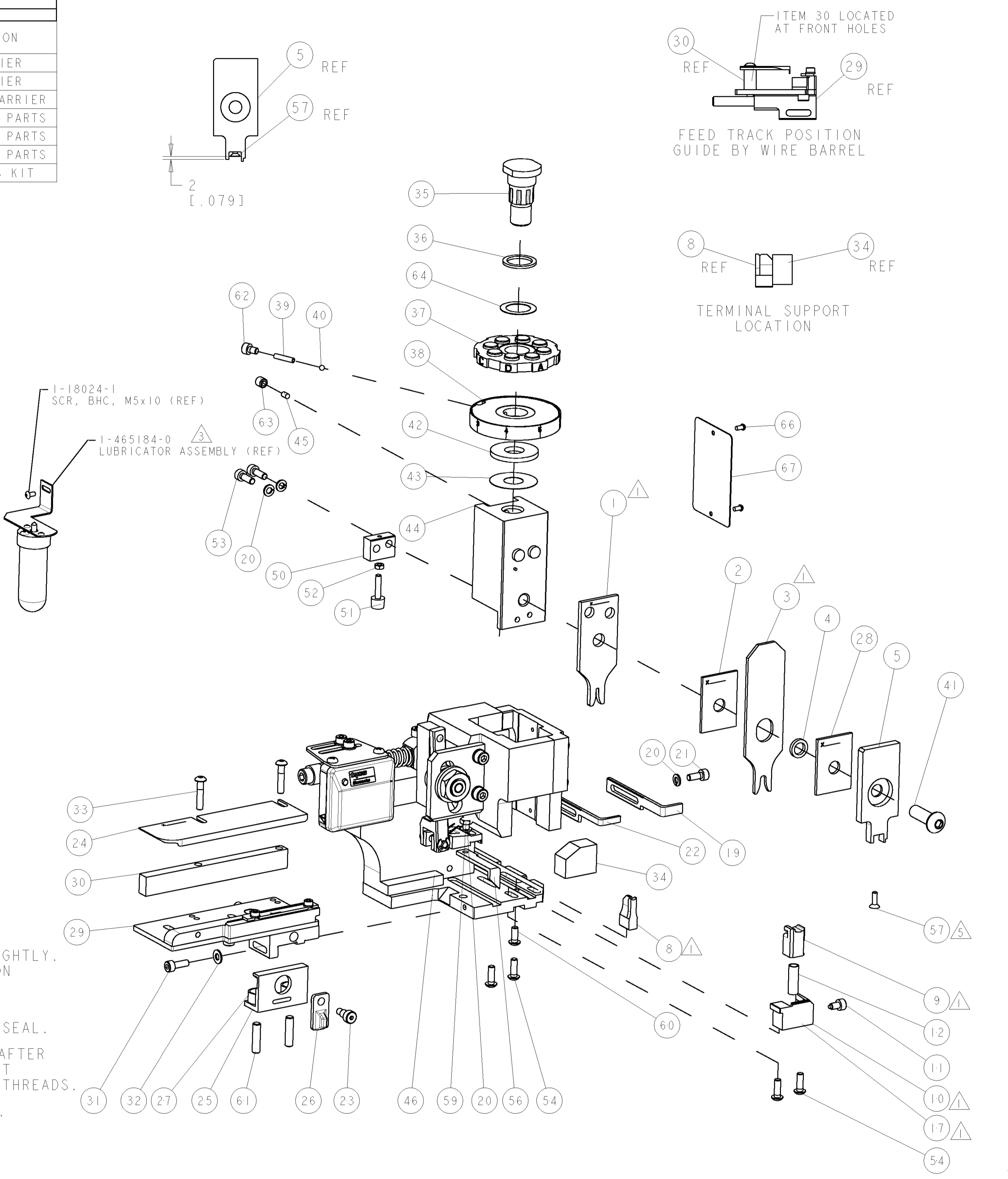
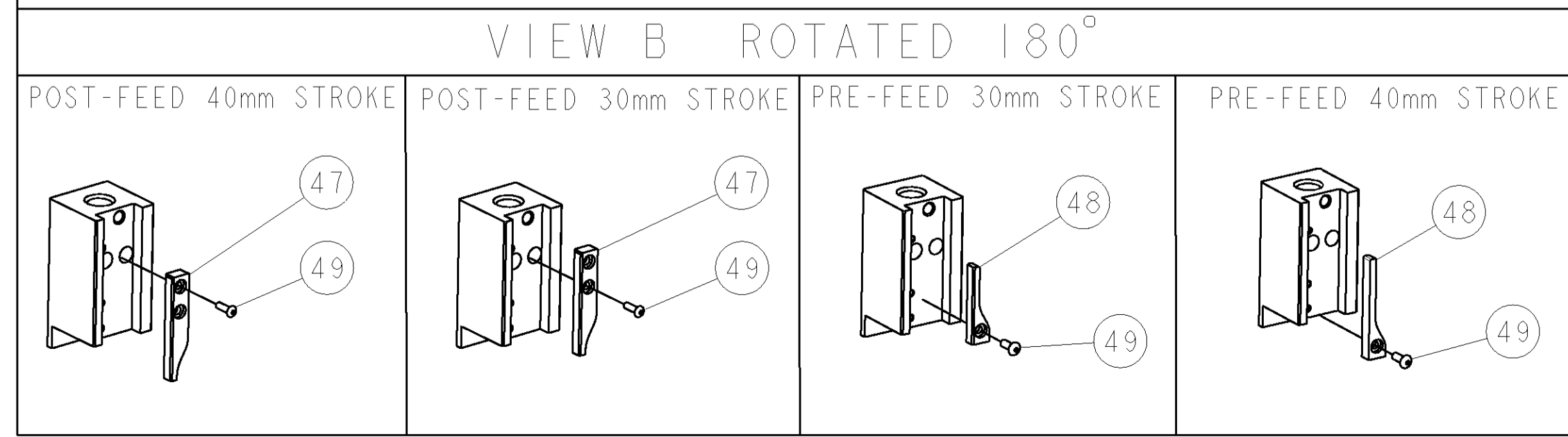


PART NUMBER	REV	TERMINATOR	FEED TYPE	DESCRIPTION
1426572-1	A	LEADMAKER	MECH POST FEED	CUTS CARRIER
1426572-2	A	BENCH	MECH PRE FEED	CUTS CARRIER
1426572-6	A	LEADMAKER	MECH POST FEED	CONTINUOUS CARRIER
7-1426572-1	A	LEADMAKER	MECH POST FEED	-1 AND SPARE PARTS
7-1426572-2	A	BENCH	MECH PRE FEED	-2 AND SPARE PARTS
7-1426572-6	A	LEADMAKER	MECH POST FEED	-6 AND SPARE PARTS
7-1426572-7	A	-	-	SPARE PARTS KIT

CRIMP DATA		ESCUBEDO TERMINAL		TYCO CRIMP SPECS	
TERMINAL NAME: TERMINAL HEMBRA Serie 2.3					
CRIMP	SIZE	TYPE	RANGE		
WIRE	1.78 [.070 IN]	F	0.50mm <sup>2</sup> -1.25mm <sup>2</sup>		
INSUL	4.32 [.170 IN]	o	3.40 [.134 IN]		
WIRE STRIP LENGTH		APPL INSTRUCTIONS			
4.30-4.70 [.170-.185 IN]		408-8322			
TERMINAL APPL SPEC				FEED 9.65 [.380 IN]	
TERMINALS APPLIED					
TYCO PN	MANUF'S PN	TYCO SEAL PN	MANU'S SEAL PN		
1572839-1	4452.01	1572859-1	51212		
1572839-2	4452.31	1572860-1	7165-0473		
1572839-3	4452.30	-	-		
1572839-4	4452.00	-	-		
WIRE SIZE	CRIMP HEIGHT	PINPN & LENGTH [IN]			
1.25mm <sup>2</sup>	1.47 ±0.05 [.058 ±.002 IN]	9-354778-9 [.2990]			
1.00mm <sup>2</sup>	1.37 ±0.05 [.054 ±.002 IN]	354779-9 [.3035]			
0.75mm <sup>2</sup>	1.24 ±0.05 [.049 ±.002 IN]	2-354779-0 [.3090]			
0.50mm <sup>2</sup>	1.14 ±0.05 [.045 ±.002 IN]	2-354779-8 [.3130]			

- ▲ RECOMMENDED SPARE PARTS.
- 2. GREASE RAM, CAM, CAM FOLLOWER AND FEED ROD LIGHTLY.
- 3. LUBRICATE DAILY PER THE APPLICATOR INSTRUCTION SHEET SUPPLIED WITH THE APPLICATOR.
- ▲ THIS APPLICATOR APPLIES TERMINAL WITH A SEAL. INSULATION DIA QUOTED IS OUTSIDE DIAMETER OF SEAL.
- ▲ APPLY TORQ-SEAL IN ALLEN SOCKET TO FILL HOLE AFTER FLAT HD HAS BEEN ADJUSTED TO CORRECT HEIGHT AT QUALIFICATION. APPLY #1-23419-5 LOC-TITE TO THREADS.
- ▲ ALL CRIMP DATA CALCULATED BY TYCO ELECTRONICS.



SET UP GAGE 458637-3

LOC	DIST	REV	DATE	BY	APPD
A	66		03JAN2006	DP	MC

REV	DATE	DESCRIPTION	ITEM NO
-	-	-	73
-	-	-	72
-	-	-	71
-	-	-	70
-	-	-	69
-	-	-	68
-	-	-	67
-	-	-	66
-	-	-	65
-	-	-	64
-	-	-	63
-	-	-	62
-	-	-	61
-	-	-	60
-	-	-	59
-	-	-	58
-	-	-	57
-	-	-	56
-	-	-	55
-	-	-	54
-	-	-	53
-	-	-	52
-	-	-	51
-	-	-	50
-	-	-	49
-	-	-	48
-	-	-	47
-	-	-	46
-	-	-	45
-	-	-	44
-	-	-	43
-	-	-	42
-	-	-	41
-	-	-	40
-	-	-	39
-	-	-	38
-	-	-	37
-	-	-	36
-	-	-	35
-	-	-	34
-	-	-	33
-	-	-	32
-	-	-	31
-	-	-	30
-	-	-	29
-	-	-	28
-	-	-	27
-	-	-	26
-	-	-	25
-	-	-	24
-	-	-	23
-	-	-	22
-	-	-	21
-	-	-	20
-	-	-	19
-	-	-	18
-	-	-	17
-	-	-	16
-	-	-	15
-	-	-	14
-	-	-	13
-	-	-	12
-	-	-	11
-	-	-	10
-	-	-	9
-	-	-	8
-	-	-	7
-	-	-	6
-	-	-	5
-	-	-	4
-	-	-	3
-	-	-	2
-	-	-	1
-	-	-	83
-	-	-	82
-	-	-	81
-	-	-	80
-	-	-	79
-	-	-	78
-	-	-	77
-	-	-	76
-	-	-	75
-	-	-	74

REV	DATE	DESCRIPTION	ITEM NO
-	-	-	83
-	-	-	82
-	-	-	81
-	-	-	80
-	-	-	79
-	-	-	78
-	-	-	77
-	-	-	76
-	-	-	75
-	-	-	74

DIMENSIONS: mm [IN]	TOLERANCES UNLESS OTHERWISE SPECIFIED: 0 PLC ± 1 PLC ± 2 PLC ± 3 PLC ± 4 PLC ± ANGLES ±	DWN: PROUSE 31OCT2005 CWN: APVD: MCLIFFORD 31OCT2005 PRODUCT SPEC: APPLICATION SPEC: See Table WEIGHT: MATERIAL: FINISH:	<b>tyco</b> Tyco Electronics Harrisburg, PA 17105-3608 <b>Electronic</b> NAME: SIDE FEED HDI APPLICATOR SIZE: CAGE CODE: DRAWING NO: A1 00779 C=1426572 RESTRICTED TO: SCALE: 3:5 SHEET 1 OF 1 REV A
------------------------	---	--	---