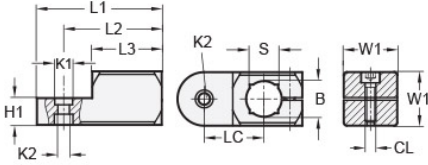




MT12-CCSWV-20-AN

Ruland Swivel Clamp Joint, Swivel Thru Hole 5.5mm, Clamp Width 20mm, Thru Hole 12mm, Clamp Screw M5, L 50mm, Black Anodized Aluminum




Description

Ruland MT12-CCSWV-20-AN is a swivel clamp joint with a thru hole for 12mm round or 10mm square tube, M5 clamp screw, 10mm base height, 20mm width and height, and 50mm overall length. It is designed to fit with MT10:12 swivel clamp bases, MT12 clamp connectors and mounting blocks, and MT12 round and square tubes. When combined with a swivel bases or attachment clamp joints, it is an ideal articulating mounting solution for screens, sensors, reflectors, plexiglass machine guards, and other components that require frequent adjustments. The vertical bore is parallel to the swivel axis. An MT10:12-SWALK-M5-20 adjustable clamping handle can be used to join it to other Ruland swivel components or tubes for rapid repositioning without the use of tools. This part is aluminum with a black anodized finish for added corrosion resistance when compared to unplated types. MT12-CCSWV-20-AN is manufactured by Otto Ganter, inventoried by Ruland, and RoHS3 compliant.

Product Specifications

Thru Hole Diameter B	12 mm	Thru Hole Tolerance	+0.11/-0 mm
Square Thru Hole S	10 mm	Counterbore 1 Diameter K1	8.5 mm
Counterbore 2 Diameter K2	5.5 mm	Clamp Screw CL	M5
Overall Length L1	50 mm	Hub Length LH	29 mm
Edge To Center Of Counterbore L2	40 mm	Center To Center LC	23 mm
Width & Height W1	20 mm	Base Height H1	10 mm
Material Specification	Anodized Aluminum	Manufacturer	JW Winco/ Otto Ganter
Country of Origin	Germany	Weight (lbs)	0.075800
UPC	634529230404	Tariff Code	7609.00.0000
UNSPC	31162908		

Note 1 Performance ratings are for guidance only. The user must determine suitability for a particular application.

Prop 65  **WARNING** This product can expose you to the chemical Nickel (metallic), known to the State of California to cause cancer. For more information go to www.P65Warnings.ca.gov.