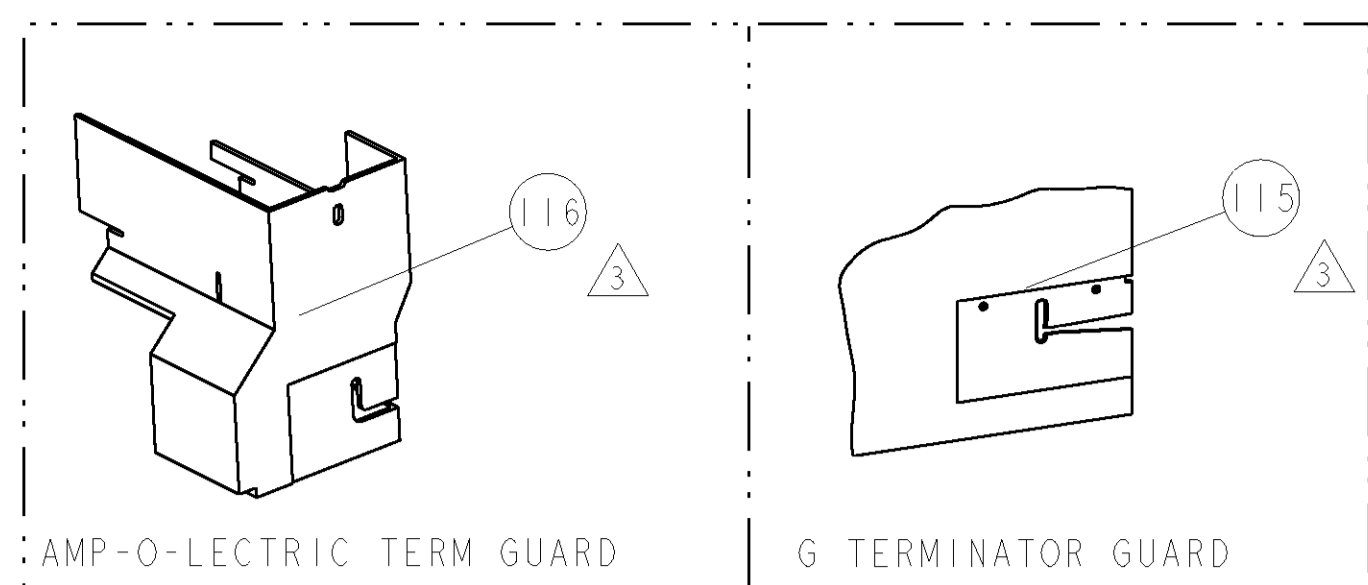


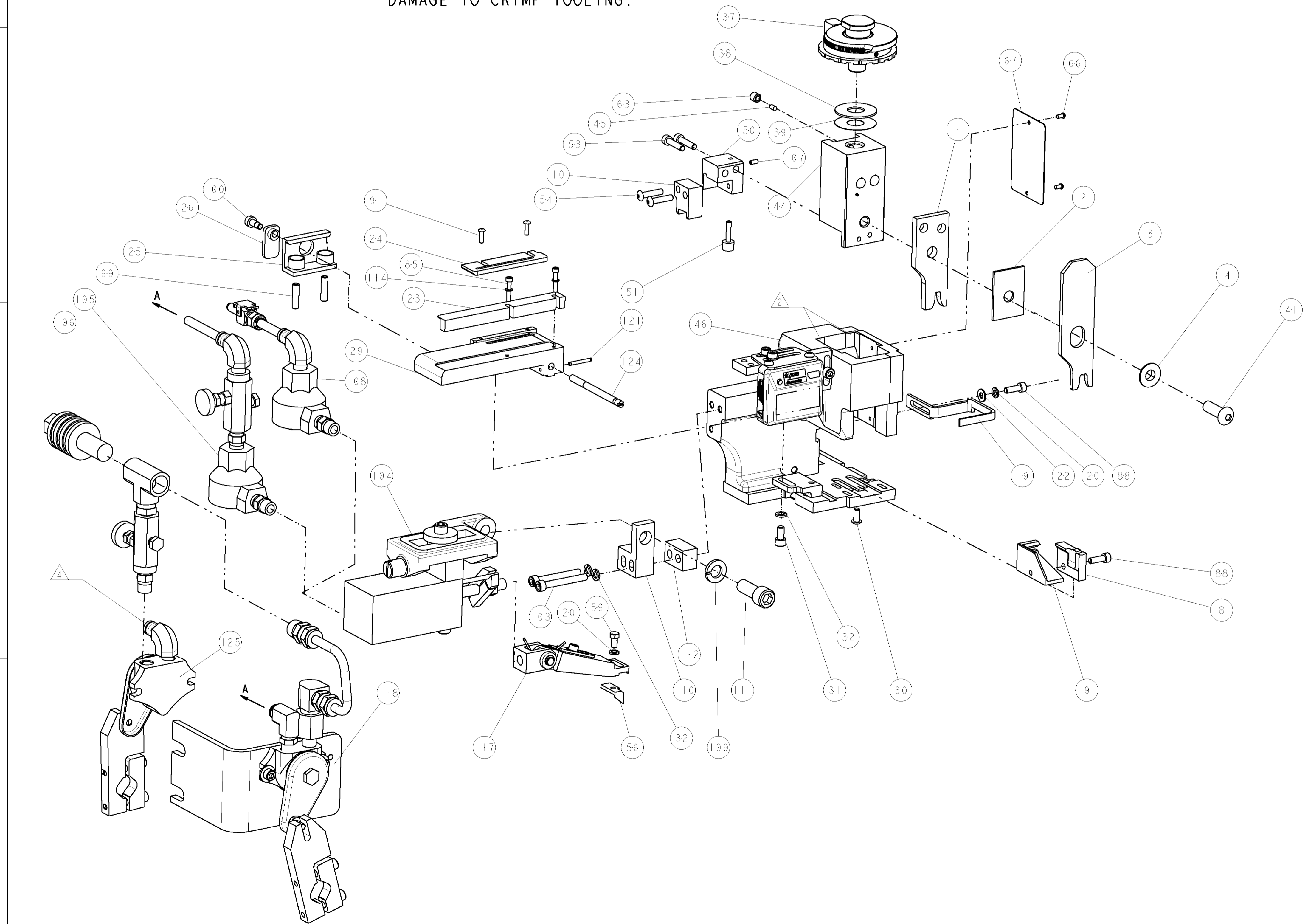
PART NUMBER	REV	FIRST USED	POWER UNIT	FEED TYPE	DESCRIPTION
1855313-1	A	122500-1	LEADMAKER	AIR FEED	CUTS CARRIER
1855313-2	A	565435-5	BENCH MODEL K	AIR FEED	CUTS CARRIER
1855313-3	A	354500-1	BENCH MODEL G	AIR FEED	CUTS CARRIER
1855313-6	A	122500-1	LEADMAKER	AIR FEED	CONTINUOUS CARRIER
7-1855313-7	A	-	-	-	SPARE PARTS

- 1 RECOMMENDED SPARE PARTS
- 2 GREASE LIGHTLY
- 3 GUARD MUST BE IN PLACE WHEN OPERATING APPLICATOR IN A BENCH MACHINE
- 4 INSTALL ITEMS 101, 102 AND 119 ON SIDE OF STRIPPER ON APPL HOUSING USING ITEM 21.



TERMINAL NAME: MEDIUM RING TERMINAL			
TE PN	MANUF PN	PACKARD TERM - PACKARD CRIMP SPECS	
1949429-1	12004436	CRIMP HEIGHT	WIRE SIZE
-	-	3.38±0.05mm [.133±.002]	3mm ²
-	-	CRIMP	SIZE
-	-	WIRE	4.57mm [.180]
-	-	INSUL	6.35mm [.250]
-	-	FEED	22.48mm
-	-	APPLICATOR INSTRUCTIONS	408-8040 & 408-8490
-	-	SET UP GAGE	-

*** WARNING**
ON INSTALLATION, SET WIRE DISC TO LARGEST WIRE SIZE SETTING. USE OF SETTINGS BELOW MIN. REQUIRED CRIMP HEIGHT SETTING WILL CAUSE DAMAGE TO CRIMP TOOLING.



LOC	DIST	REV	DESCRIPTION	DATE	DWN	APPR
A	66		RELEASED	28NOV2007	BH	BH

ITEM NO	QTY	DESCRIPTION	ITEM NO
-	-	FEED_FNGR_CNTR_ASM	
-	-	455350-4 AIR BLAST ASS'Y	125
-	-	690432-3 ADJUSTMENT SCREW	124
-	-	4-21028-0 PIN, SLOTTED SPRING .094 X .750	121
-	-	18 24 18 IN 27319-4 TUBING, POLY-FLO, NATURAL	119
-	-	692655-6 AIR FEED VALVE ASSEMBLY	118
-	-	461062-1 FEED FINGER ASSEMBLY	117
-	-	455749-1 GUARD WINDOW	116
-	-	679532-1 INSERT, GUARD	115
-	-	21024-2 WASHER, SPRG LOCK, REG NO 4	114
-	-	461690-2 SPACER, AIR FEED	112
-	-	3-21001-5 SCR, SKT HD CAP 3/8-16 X 1.000	111
-	-	459610-1 MOUNT, FEED BRACKET	110
-	-	21024-8 WASHER, SPRG LOCK, REG 3/8	109
-	-	692655-7 AIR FEED VALVE ASSEMBLY	108
-	-	2-21006-1 SCR, SET, CUP POINT 4-40 X .250	107
-	-	24042-2 VALVE, SLEEVE, 3-WAY	106
-	-	692655-5 AIR FEED VALVE ASSEMBLY	105
-	-	461065-1 ASSEMBLY, AIR FEED	104
-	-	4-21000-1 SCR, SKT HD CAP 10-32 X 1.500	103
-	-	986220-1 CLAMP, CABLE, BLACK	102
-	-	23238-1 INSERT, COUPLING	101
-	-	22353-8 SCR, SHLD, SLOT HD, 3/16 DIA	100
-	-	5-21006-6 SCR, SET, CUP POINT 10-32 X .750	99
-	-	1-21002-4 SCR, BTN SKT HD CAP 4-40 X .375	91
-	-	2-21000-7 SCR, SKT HD CAP 8-32 X .500	88
-	-	1-21000-6 SCR, SKT HD CAP 4-40 X .625	85
-	-	4088040 SF APPL INST 408-8040	72
-	-	217238-1 GENERAL INSTRUCTION PKG	71
-	-	461264-5 PLATE, IDENTIFICATION	67
-	-	21017-2 SCREW, DRIVE	66
-	-	21009-2 SCR, SET, SELF LOCKING 1/4-20 X .250	63
-	-	22733-8 SCR, BHSC, SELF-LOCKING, 8-32 X .375	60
-	-	2-22603-0 SCR, HEX HD CAP 8-32 X .312	59
-	-	3-694433-9 FEED PAWL	56
-	-	2-21002-4 SCR, BTN SKT HD CAP 8-32 X .750	54
-	-	2-21000-9 SCR, SKT HD CAP 8-32 X .750	53
-	-	811242-2 BUMPER, HOLD DOWN	51
-	-	1583893-9 HOLDER, SLUG BLADE	50
-	-	3-240641-8 SPACER	49
-	-	1633399-5 APPL., BASIC AIR FEED SUB ASSY	46
-	-	690191-1 PLUG, NYLON	45
-	-	1-455673-4 RAM, SIDE FEED	44
-	-	7-21002-9 SCR, BTN SKT HD CAP 5/16-24 X 1.00	41
-	-	690125-1 SHIM SUB-ASSY	39
-	-	1-469367-1 SHIM	38
-	-	879103-2 FINE ADJUST HEAD ASSEMBLY	37
-	-	21024-5 WASHER, SPRG LOCK, REG NO 10	32
-	-	3-21000-4 SCR, SKT HD CAP 10-32 X .375	31
-	-	3-844048-5 PLATE, REAR STRIP GUIDE	29
-	-	1-22284-0 SPRING, COMPRESSION	27
-	-	240793-1 LEVER, DRAG RELEASE	26
-	-	240792-1 DRAG, TERMINAL	25
-	-	1633497-2 REAR STRIP GUIDE	24
-	-	2-189124-8 GUIDE, FRONT STRIP	23
-	-	21055-6 WASHER, FLAT, REG NO 8	22
-	-	21024-4 WASHER, SPRG LOCK, REG NO 8	20
-	-	1-456468-1 STRIPPER, SPECIAL	19
-	-	1583859-9 BLADE, SLUG	10
-	-	1-1633124-3 PLATE, REAR SHEAR	9
-	-	1-1633507-3 ANVIL, SPECIAL, COMBINATION	8
-	-	238009-1 BLOCK, FL CRIMPER SPACER	4
-	-	1633587-1 CRIMPER, INSULATION F	3
-	-	1-455888-5 SPACER, CRIMPER	2
-	-	1633586-1 CRIMPER, WIRE	1

DIMENSIONS: INCHES 0 PLC ±.01 1 PLC ±.01 2 PLC ±.01 3 PLC ±.001 4 PLC ±.0001 ANGLES ±.001		TOLERANCES UNLESS OTHERWISE SPECIFIED: 0 PLC ±.01 1 PLC ±.01 2 PLC ±.01 3 PLC ±.001 4 PLC ±.0001 ANGLES ±.001		DWN B. HIGMAN 31 JUL 2007 CHK B. HIGMAN 31 JUL 2007 APVD T. BENCHOFF 31 JUL 2007		tyco Tyco Electronics Harrisburg, PA 17105-3608	
MATERIAL		FINISH		WEIGHT		SCALE 3:5 SHEET 1 OF 1 REV A	
CUSTOMER DRAWING				PART NO DESCRIPTION ITEM NO			
A 00779 C=1855313				FINE ADJUST SIDE FEED HDM APPLICATOR			

CUSTOMER VIEWABLE ASSEMBLY