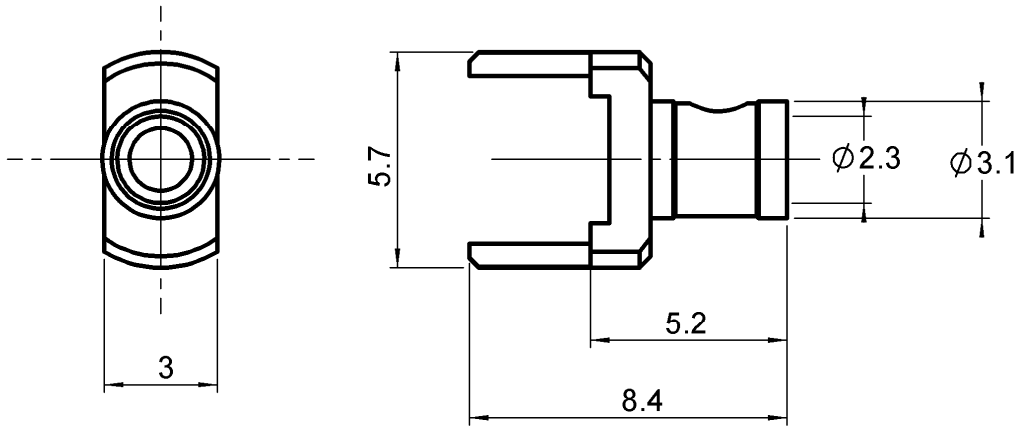


FEEDTHROUGH FOR P.C.B SOLDER TYPE

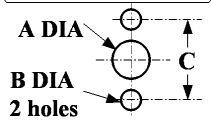
R280.222.000

CRIMP TYPE CABLE 2.6/50

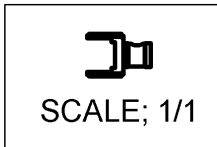
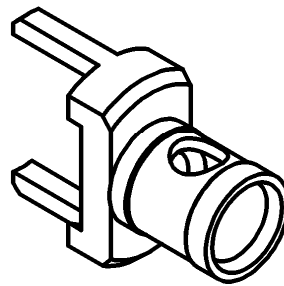
Series : MCX



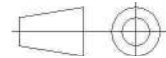
PANEL CUT OUT



	mm	
	Maxi	mini
A	1.15	1.05
B	1.15	1.05
C	5.15	5.05



All dimensions are in mm.



COMPONENTS	MATERIALS	PLATING (µm)
BODY	BRASS	GOLD OVER NICKEL
CENTER CONTACT	-	-
OUTER CONTACT	-	-
INSULATOR	-	-
GASKET	-	-
OTHERS PARTS	-	-
-	-	-
-	-	-

Issue : 0902 C

In the effort to improve our products, we reserve the right to make changes judged to be necessary



FEEDTHROUGH FOR P.C.B SOLDER TYPE

R280.222.000

CRIMP TYPE CABLE 2.6/50

Series : **MCX**

PACKAGING

Standard	Unit	Other
100	'W' option	Contact us

SPECIFICATION

CABLE ASSEMBLY

Stripping	a	b	c	d	e	f
mm						

ELECTRICAL CHARACTERISTICS

Impedance		50 Ω
Frequency		0-3 GHz
VSWR	+	NA x F(GHz) Maxi
Insertion loss		NA √F(GHz) dB Maxi
RF leakage	- (NA -F(GHz)) dB Maxi
Voltage rating		2000 Veff Maxi
Dielectric withstanding voltage		900 Veff mini
Insulation resistance		NA MΩ mini

Assembly instruction :

Recommended cable(s)

MECHANICAL CHARACTERISTICS

Recommended torque		
Panel nut		NA N.cm
Clamp nut		NA N.cm
A/F clamp nut		NA mm
Mating life		NA Cycles mini
Weight		0,2660 g

Cable retention

- pull off	53 N mini
- torque	NA N.cm

TOOLING

Part Number	Description	Hexagon
.	.	.

OTHER CHARACTERISTICS

-

ENVIRONMENTAL

Operating temperature	-55/+155 °C
Panel leakage	

Issue : **0902 C**

In the effort to improve our products, we reserve the right to make changes judged to be necessary



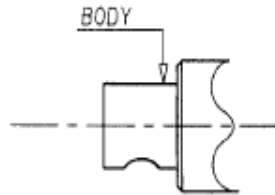
RADIALL®

FEEDTHROUGH FOR P.C.B SOLDER TYPE

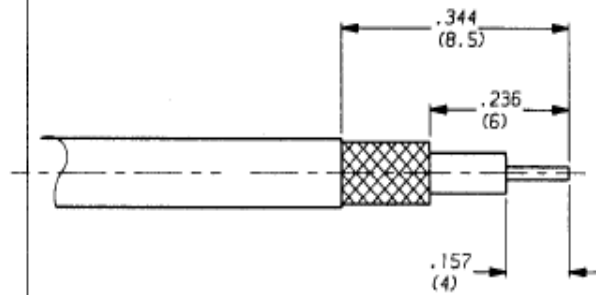
R280.222.000

CRIMP TYPE CABLE 2.6/50

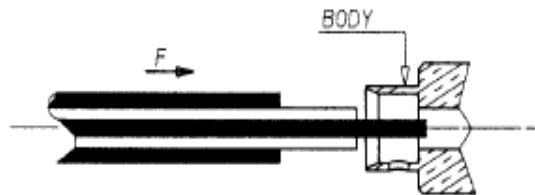
Series : MCX



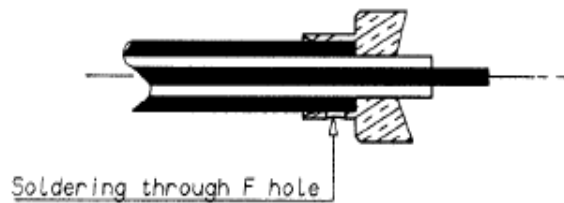
1-1 Cable stripping



2-1 To introduce cable into the connector body until contact with it according to F direction



3-1 To solder the braid on the body through F hole



Issue : 0902 C

In the effort to improve our products, we reserve the right to make changes judged to be necessary



RADIALL®