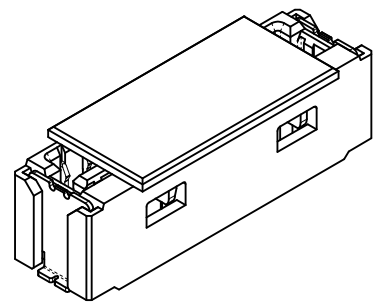
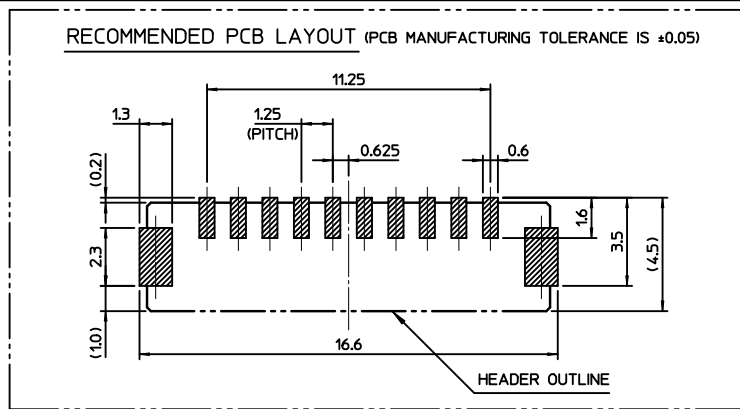


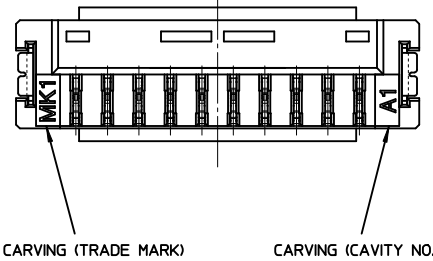
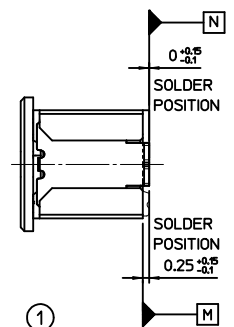
SECTION A-A (SCALE 10:1)

<PART LIST>

NO.	PART NAME
①	HEADER
②	PICK-UP COVER
③	CONTACT TERMINAL
④	FITTING NAIL

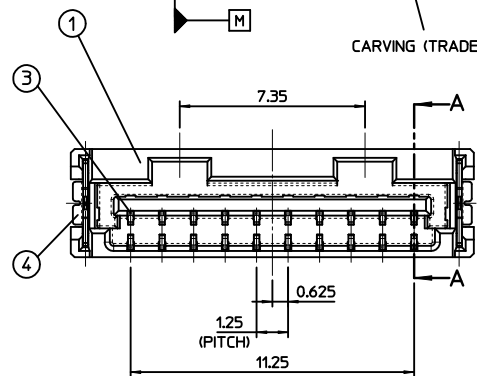


ISOMETRIC VIEW



NOTE

- MATED WITH : 104105-1000
- MATERIAL
 - HEADER : THERMOPLASTIC, HALOGEN FREE UL94V-0, COLOR OF NATURAL
 - PICK-UP COVER : THERMOPLASTIC, UL94V-0, COLOR OF NATURAL
 - CONTACT TERMINAL : COPPER ALLOY (t=0.2)
 - FITTING NAIL : COPPER ALLOY (t=0.2)
- FINISHES
 - CONTACT TERMINAL : PURE-TIN PLATING ON OVERALL. THICKNESS 3.0μm~5.0μm UNDER PLATING Ni OVERALL. THICKNESS 1.25μm~3.75μm
 - FITTING NAIL : PURE-TIN PLATING ON OVERALL. THICKNESS 3.0μm~5.0μm UNDER PLATING Ni OVERALL. THICKNESS 1.25μm~3.75μm
- COPLANALITY OF SOLDER TAILS (PEAK TEMP. : 260°C),
 - BEFORE REFLOW : 0.08 MAX.
 - AFTER REFLOW : 0.1 MAX.
- PRODUCT SPECIFICATION : PS-104099-001
- PACKING INFORMATION : PK-104099-001



PICK-UP COVER OPENED

RELEASED
 EC NO: KOR2011-0072
 DRW: HTSONG 2011/01/10
 CHK: SHCHU 2011/01/10
 APPR: YUNSIKIM 2011/01/10

QUALITY SYMBOLS
 ▽=0
 ◁=0

GENERAL TOLERANCES (UNLESS SPECIFIED)

	mm	INCH
4 PLACES	± ---	± ---
3 PLACES	± ---	± ---
2 PLACES	± 0.25	± ---
1 PLACE	± 0.25	± ---

ANGULAR ± 1 °

DRAFT WHERE APPLICABLE MUST REMAIN WITHIN DIMENSIONS

DIMENSION STYLE
 MM ONLY

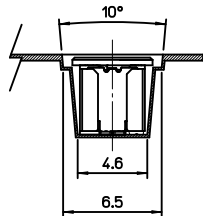
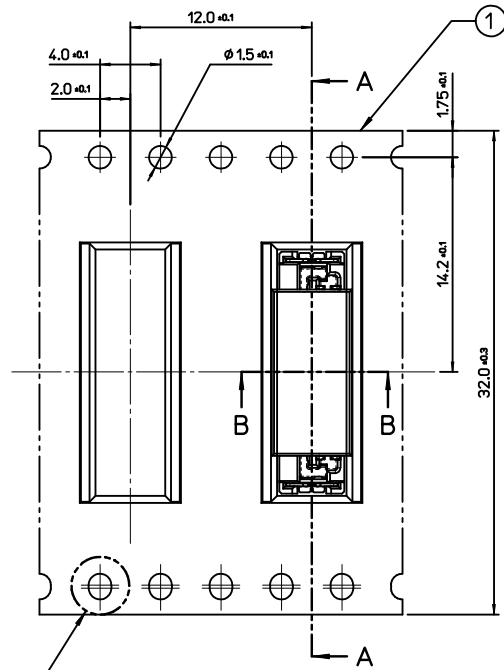
DRAWN BY: HTSONG DATE: 2010/06/28
 CHECKED BY: SHCHU DATE: 2010/06/28
 APPROVED BY: YSKIM DATE: 2010/06/28

MATERIAL NO. 1040991017

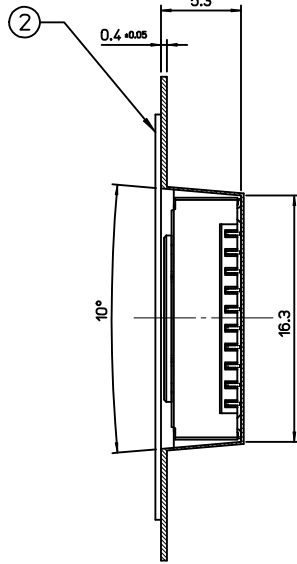
<TABLE>

1040991017	NATURAL
ORDER NO.	COLOR
SCALE 5:1	DESIGN UNITS METRIC
THIRD ANGLE PROJECTION	
1.25 W/B ST. CONN. 10P HEADER ASS'Y	
MOLEX INCORPORATED	
DOCUMENT NO. SD-104099-001	SHEET NO. 1 OF 1

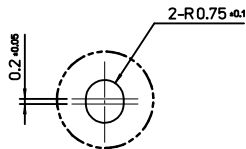
THIS DRAWING CONTAINS INFORMATION THAT IS PROPRIETARY TO MOLEX INCORPORATED AND SHOULD NOT BE USED WITHOUT WRITTEN PERMISSION



SECTION B-B



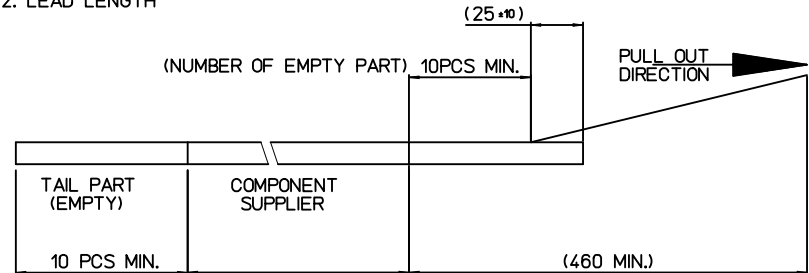
SECTION A-A



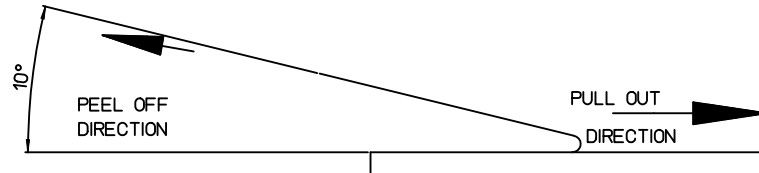
DETAIL1 (SCALE 5:1)

NOTE
1. QUANTITY OF CONNECTORS : 1,300 PCS/REEL

2. LEAD LENGTH



3. PEELING OFF FORCE OF COVER TAPE : 0.1N~0.59N(10.20F~60GF)
(PEELING DIRECTION AS SHOW IN FOLLOW FIG.)
PEELING OFF SPEED : 300mm/Min.(Ref.)

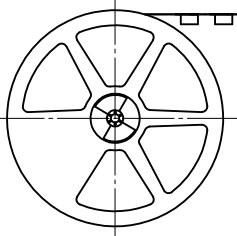
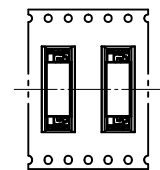


4. FLASH IN ANY PORTION SHOULD BE LESS THAN 0.20mm MAX.
5. UNLESS OTHERWISE SPECIFIED INNER R0.2 MAX
6. DRAFT ANGLE 3°MAX

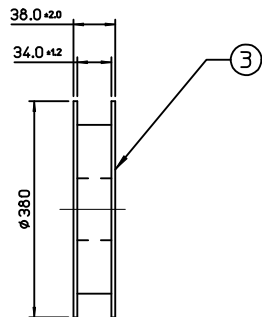
<TABLE>

104099-1017	104099-1017	32.0mm	104099-9001
MATERIAL NO.	CONNECTOR	TAPE WIDTH	EMBOSS TAPE

③	PLASTIC BOBBIN	HI P.S	WHITE
②	COVER TAPE	PET ANTISTATIC	26.0mm
①	CARRIER (EMBOSS) TAPE	PET ANTISTATIC	
NO.	DESCRIPTION	MATERIAL	REMARK



PLASTIC BOBBIN



RELEASED	EC NO: KOR2011-0072	2011/01/10	2011/01/10
DRWN: HTSONG	CHKD: SHCHU	2011/01/10	2011/01/10
APPR: YUNSIKKIM			
DESCRIPTION			
QUALITY SYMBOLS	▽=0	∇=0	
REV	A		

GENERAL TOLERANCES (UNLESS SPECIFIED)

	mm	INCH
4 PLACES	± ---	± ---
3 PLACES	± ---	± ---
2 PLACES	± 0.25	± ---
1 PLACE	± 0.25	± ---
ANGULAR ± 3 °		

DIMENSION STYLE
MM ONLY

DRAWN BY	DATE	TITLE
HTSONG	2010/06/28	1.25 W/B ST. CONN. 10P EMBOSS PACKAGE
CHECKED BY	DATE	
SHCHU	2010/06/28	
APPROVED BY	DATE	
YSKIM	2010/06/28	
MATERIAL NO.	DOCUMENT NO.	
SEE TABLE	SD-104099-002	

SCALE
3:1

DESIGN UNITS
METRIC

THIRD ANGLE
PROJECTION

DRAFT WHERE APPLICABLE
MUST REMAIN
WITHIN DIMENSIONS

SIZE
A3

THIS DRAWING CONTAINS INFORMATION THAT IS PROPRIETARY TO MOLEX
INCORPORATED AND SHOULD NOT BE USED WITHOUT WRITTEN PERMISSION