

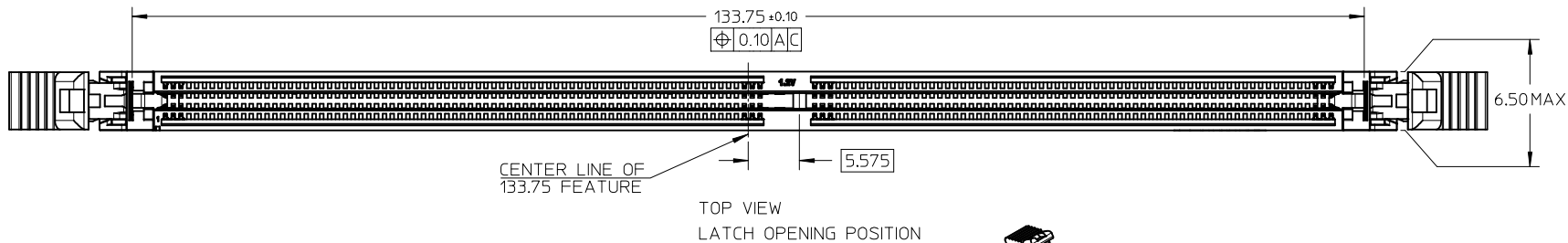
DETAIL1: BUMPER ZONE

THIS DESIGN IS BASED ON DESIGN OBJECTIVES AND IS STRICTLY TENTATIVE. IT MAY CHANGE BASED ON RESULTS OF ADDITIONAL DESIGN REVIEWS AND VERIFICATIONS.

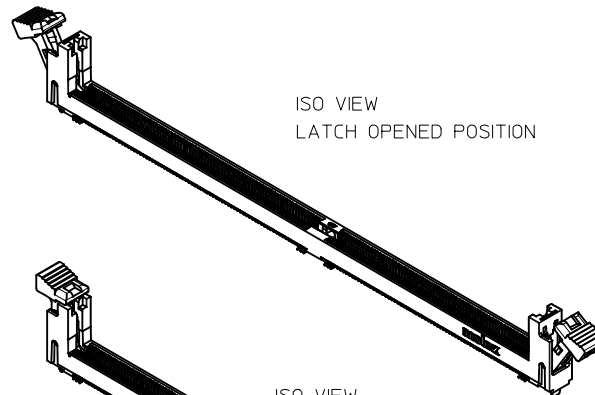
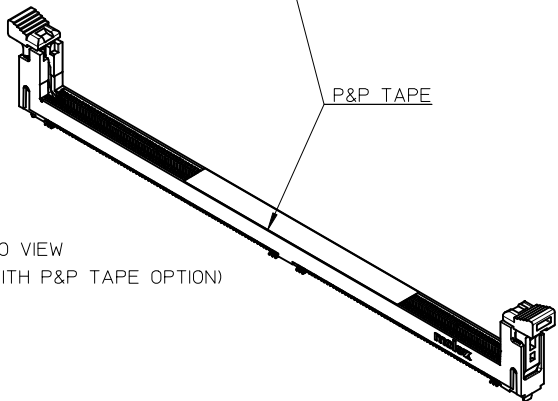
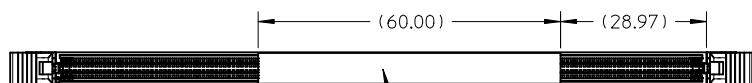
NOTES:

- MATERIAL : HOUSING - HALOGEN FREE HIGH TEMP POLYAMIDE, GLASS FILLED, UL94V-0, COLOUR : SEE TABLE ON SHEET 5. LATCH - HALOGEN FREE HIGH TEMP POLYAMIDE, GLASS FILLED, UL94V-0, COLOUR : SEE TABLE ON SHEET 5. TERMINAL : COPPER ALLOY. METALTAB: COPPER ALLOY.
- FINISHES - SEE TABLE ON SHEET 5.
- PRODUCT SPECIFICATION : SEE TABLE ON SHEET 5.
- PACKAGING SPECIFICATION: PRODUCT SHALL BE PACKED IN TRAY, SEE SHEET 5
- CARD SLOT ACCEPTS 1.40±0.10MM MODULE THICKNESS (MEASURED OVER P.C. PADS).
- MOLEX LOGO, DATE & PART NO. INDICATED ON HOUSING.
- MODULE SEATING PLANE.
- KEEP OUT ZONE RESERVED FOR LATCH.
- KEEP OUT AREA IS THE AREA WHERE THE CONNECTOR (INCLUDES LATCHES IN OPENING POSITION) IS MOUNTED ON THE PCB.
- REFER TO AS-78730-001 FOR CONNECTOR APPLICATION GUIDELINE.
- REFER TO AS-78730-002 FOR PCB ROUTING RECOMMENDATIONS.

ADD NEW PN EC NO: S2017-0584 DRW:EKSOH 2017/05/03 CHKD:CGTAN 2017/05/19 APPR:SHLENI 2017/05/19	QUALITY SYMBOLS $F_A=0$ $F_C=0$ $F_B=0$	GENERAL TOLERANCES (UNLESS SPECIFIED)		DIMENSION STYLE MM ONLY		SCALE NTS	DESIGN UNITS METRIC	THIRD ANGLE PROJECTION		
		mm	INCH	DRAWN BY EKSOH	DATE 2014/10/29	TITLE DDR4 DIMM, 0.85MM PITCH 288CKTS, VERT. SMT (TAB)				
		4 PLACES ± --- ± ---	3 PLACES ± --- ± ---	CHECKED BY CGTAN	DATE 2014/12/18	molex DOCUMENT NO. SD-78730-003 SHEET NO. 1 OF 5				
		2 PLACES ± 0.20 ± ---	1 PLACE ± --- ± ---	APPROVED BY SHLENI	DATE 2014/12/18					
0 PLACE ± --- ± ---	ANGULAR ± 3 °		MATERIAL NO.		SEE TABLE					
DRAFT WHERE APPLICABLE MUST REMAIN WITHIN DIMENSIONS		SIZE A3		THIS DRAWING CONTAINS INFORMATION THAT IS PROPRIETARY TO MOLEX INCORPORATED AND SHOULD NOT BE USED WITHOUT WRITTEN PERMISSION						

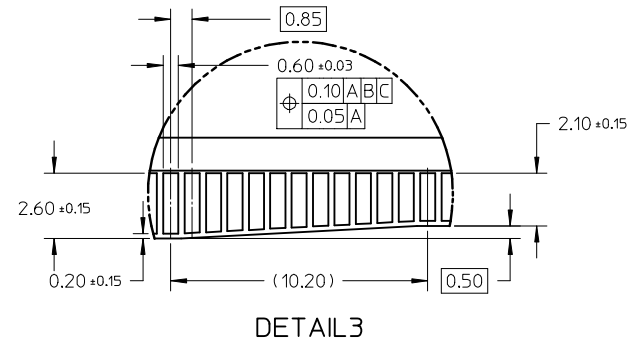
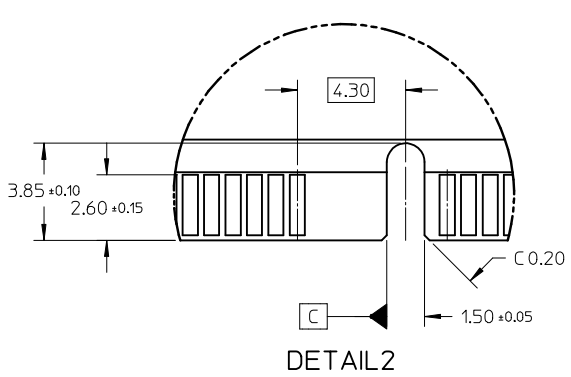
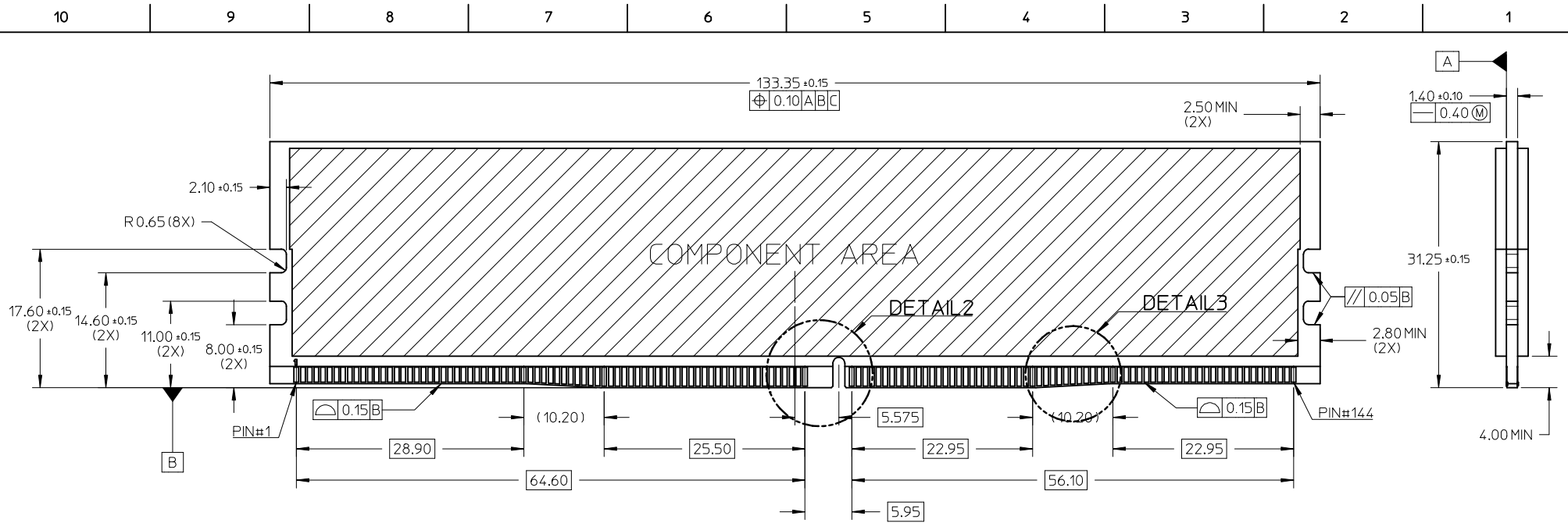


VIEWS WITH P&P TAPE OPTION



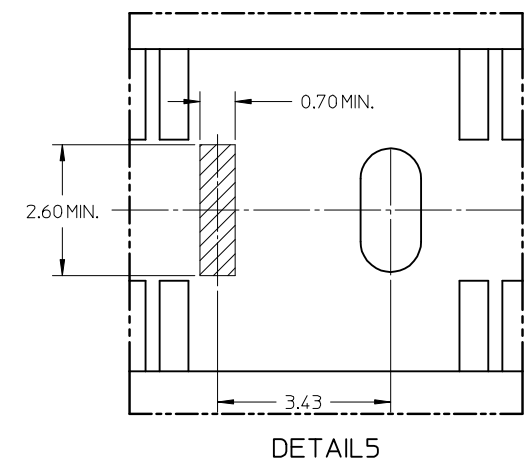
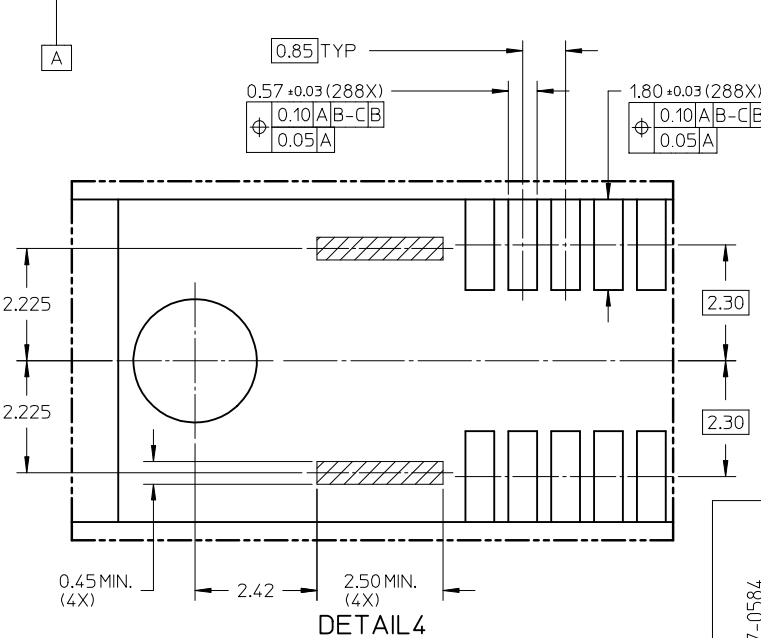
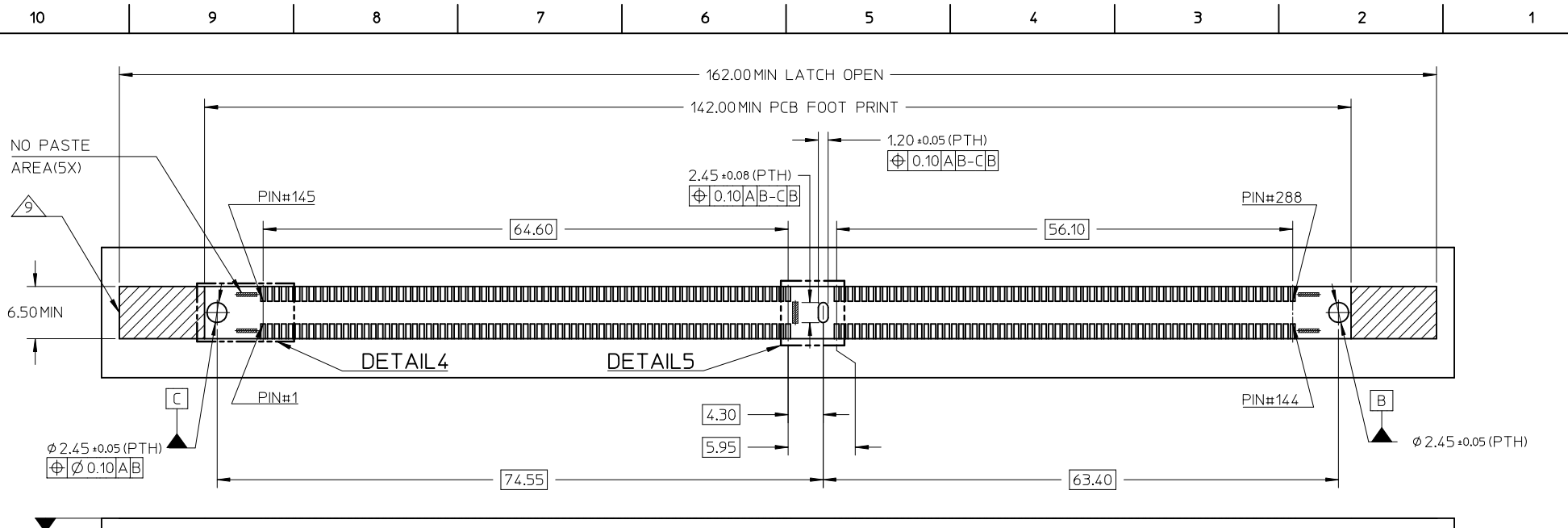
THIS DESIGN IS BASED ON DESIGN OBJECTIVES AND IS STRICTLY TENTATIVE. IT MAY CHANGE BASED ON RESULTS OF ADDITIONAL DESIGN REVIEWS AND VERIFICATIONS.

ADD NEW PN EC NO: S2017-0584 DRW:EKSOH 2017/05/03 CHKD:CGTAN 2017/05/19 APPR:SHLENI 2017/05/19	QUALITY SYMBOLS $\nabla_A = 0$ $\nabla_C = 0$ $\nabla_P = 0$	GENERAL TOLERANCES (UNLESS SPECIFIED) mm INCH 4 PLACES ± --- ± --- 3 PLACES ± --- ± --- 2 PLACES ± 0.20 ± --- 1 PLACE ± --- ± --- 0 PLACE ± --- ± ---	DIMENSION STYLE MM ONLY DRAWN BY: EKSOH DATE: 2014/10/29 CHECKED BY: CGTAN DATE: 2014/12/18 APPROVED BY: SHLENI DATE: 2014/12/18	SCALE: NTS DESIGN UNITS: METRIC THIRD ANGLE PROJECTION	TITLE: DDR4 DIMM, 0.85MM PITCH 288CKTS, VERT. SMT (TAB)
	DRAFT WHERE APPLICABLE MUST REMAIN WITHIN DIMENSIONS	ANGULAR ± 3 °	MATERIAL NO.: SEE TABLE	DOCUMENT NO.: SD-78730-003	SHEET NO.: 2 OF 5
	SIZE: A3	THIS DRAWING CONTAINS INFORMATION THAT IS PROPRIETARY TO MOLEX INCORPORATED AND SHOULD NOT BE USED WITHOUT WRITTEN PERMISSION			
	REV: 6	molex			



THIS DESIGN IS BASED ON DESIGN OBJECTIVES AND IS STRICTLY TENTATIVE. IT MAY CHANGE BASED ON RESULTS OF ADDITIONAL DESIGN REVIEWS AND VERIFICATIONS.

ADD NEW PN EC NO: S2017-0584 DRW: EKSOH 2017/05/03 CHKD: CGTAN 2017/05/19 APPR: SHLENI 2017/05/19	QUALITY SYMBOLS $\nabla_A = 0$ $\nabla_C = 0$ $\nabla_B = 0$	GENERAL TOLERANCES (UNLESS SPECIFIED) <table border="1"> <thead> <tr> <th></th> <th>mm</th> <th>INCH</th> </tr> </thead> <tbody> <tr> <td>4 PLACES</td> <td>± ---</td> <td>± ---</td> </tr> <tr> <td>3 PLACES</td> <td>± ---</td> <td>± ---</td> </tr> <tr> <td>2 PLACES</td> <td>± 0.20</td> <td>± ---</td> </tr> <tr> <td>1 PLACE</td> <td>± ---</td> <td>± ---</td> </tr> <tr> <td>0 PLACE</td> <td>± ---</td> <td>± ---</td> </tr> </tbody> </table>		mm	INCH	4 PLACES	± ---	± ---	3 PLACES	± ---	± ---	2 PLACES	± 0.20	± ---	1 PLACE	± ---	± ---	0 PLACE	± ---	± ---	DIMENSION STYLE MM ONLY DRAWN BY: EKSOH DATE: 2014/10/29 CHECKED BY: CGTAN DATE: 2014/12/18 APPROVED BY: SHLENI DATE: 2014/12/18	SCALE: NTS DESIGN UNITS: METRIC THIRD ANGLE PROJECTION
		mm	INCH																			
	4 PLACES	± ---	± ---																			
	3 PLACES	± ---	± ---																			
	2 PLACES	± 0.20	± ---																			
	1 PLACE	± ---	± ---																			
0 PLACE	± ---	± ---																				
DRAFT WHERE APPLICABLE MUST REMAIN WITHIN DIMENSIONS	MATERIAL NO.: SEE TABLE SIZE: A3 THIS DRAWING CONTAINS INFORMATION THAT IS PROPRIETARY TO MOLEX INCORPORATED AND SHOULD NOT BE USED WITHOUT WRITTEN PERMISSION	TITLE: DDR4 DIMM, 0.85MM PITCH 288CKTS, VERT. SMT (TAB)	molex DOCUMENT NO.: SD-78730-003	SHEET NO.: 3 OF 5																		




RECOMMENDED PCB THICKNESS: 1.57MM TO 3.18MM

THIS DESIGN IS BASED ON DESIGN OBJECTIVES AND IS STRICTLY TENTATIVE. IT MAY CHANGE BASED ON RESULTS OF ADDITIONAL DESIGN REVIEWS AND VERIFICATIONS.

ADD NEW PN EC NO: S2017-0584 DRW: EKS0H 2017/05/03 CHKD: CGTAN 2017/05/19 APPR: SHLENI 2017/05/19	QUALITY SYMBOLS $F_A=0$ $F_G=0$ $F_P=0$	GENERAL TOLERANCES (UNLESS SPECIFIED)		DIMENSION STYLE MM ONLY		SCALE NTS	DESIGN UNITS METRIC	THIRD ANGLE PROJECTION	
		4 PLACES ± --- ± --- 3 PLACES ± --- ± --- 2 PLACES ± 0.20 ± --- 1 PLACE ± --- ± --- 0 PLACE ± --- ± ---	mm INCH	DRAWN BY EKS0H	DATE 2014/10/29	TITLE DDR4 DIMM, 0.85MM PITCH 288CKTS, VERT. SMT (TAB)			
		DRAFT WHERE APPLICABLE MUST REMAIN WITHIN DIMENSIONS		CHECKED BY CGTAN	DATE 2014/12/18				
		ANGULAR ± 3 °		APPROVED BY SHLENI	DATE 2014/12/18				

CKT SIZE	ASSEMBLY PART NO.	HOUSING COLOUR	LATCH COLOUR	P&P OPTION	DIM*P*	PLATING OPTION		PRODUCT SPEC. NO.	PACKAGING SPEC. NO.
						TERMINAL	METAL TAB		
288	78730-1502	BLACK	BLACK	NO	2.00	0.76 MICROMETER (30 MICROINCH) MIN GOLD ON CONTACT 2.54 MICROMETER (100 MICROINCH) MIN TIN ON SOLDER TAILS	1 MICROMETER (40 MICROINCH) MIN TIN OVERALL (PRE-PLATED)	PS-78730-001	PK-78730-001
	78730-1503		OFF-WHITE						
	78730-1504	OFF-WHITE	BLACK						
	78730-1505		OFF-WHITE						
	78730-1506	BLUE	BLACK						
	78730-1507		OFF-WHITE						
	78730-2502	BLACK	BLACK	YES	1.50	0.38 MICROMETER (15 MICROINCH) MIN GOLD ON CONTACT 2.54 MICROMETER (100 MICROINCH) MIN TIN ON SOLDER TAILS	1 MICROMETER (40 MICROINCH) MIN TIN OVERALL (PRE-PLATED)	PS-78730-002	PK-78730-002
	78730-2503		OFF-WHITE						
	78730-2504	OFF-WHITE	BLACK						
	78730-2505		OFF-WHITE						
	78730-2506	BLUE	BLACK	OFF-WHITE	2.00	1.27 MICROMETER (50 MICROINCH) MIN NICKEL UNDERPLATE	1 MICROMETER (40 MICROINCH) MIN TIN OVERALL (PRE-PLATED)	PS-78730-002	PK-78730-002
	78730-2507		OFF-WHITE						
	78730-1853	BLACK	NO						
	78730-1857	BLUE	YES						
	78730-2853	BLACK	NO						
	78730-2857	BLUE	YES						
	78730-1653	BLACK	NO	2.00	1.50	1.27 MICROMETER (50 MICROINCH) MIN NICKEL UNDERPLATE	1 MICROMETER (40 MICROINCH) MIN TIN OVERALL (PRE-PLATED)	PS-78730-002	PK-78730-002
	78730-2653		YES						
	78730-1658	YELLOW	NO	2.00	1.50	1.27 MICROMETER (50 MICROINCH) MIN NICKEL UNDERPLATE	1 MICROMETER (40 MICROINCH) MIN TIN OVERALL (PRE-PLATED)	PS-78730-002	PK-78730-002
	78730-1858		YES						
78730-2658	YES								
78730-2858	YES	YES	2.00	1.50	1.27 MICROMETER (50 MICROINCH) MIN NICKEL UNDERPLATE	1 MICROMETER (40 MICROINCH) MIN TIN OVERALL (PRE-PLATED)	PS-78730-002	PK-78730-002	
78730-3653	BLACK	NO	2.00	1.50	1.27 MICROMETER (50 MICROINCH) MIN NICKEL UNDERPLATE	1 MICROMETER (40 MICROINCH) MIN TIN OVERALL (PRE-PLATED)	PS-78730-002	PK-78730-002	
78730-3658	YELLOW	NO	2.00	1.50	1.27 MICROMETER (50 MICROINCH) MIN NICKEL UNDERPLATE	1 MICROMETER (40 MICROINCH) MIN TIN OVERALL (PRE-PLATED)	PS-78730-002	PK-78730-002	

THIS DESIGN IS BASED ON DESIGN OBJECTIVES AND IS STRICTLY TENTATIVE. IT MAY CHANGE BASED ON RESULTS OF ADDITIONAL DESIGN REVIEWS AND VERIFICATIONS.

ADD NEW PN EC NO: S2017-0584 DRW: EKSOH 2017/05/03 CHKD: CGTAN 2017/05/19 APPR: SHLENI 2017/05/19	QUALITY SYMBOLS $F_A=0$ $F_G=0$ $F_P=0$	GENERAL TOLERANCES (UNLESS SPECIFIED)		DIMENSION STYLE MM ONLY		SCALE NTS	DESIGN UNITS METRIC	THIRD ANGLE PROJECTION		
			mm	INCH	DRAWN BY EKSOH	DATE 2014/10/29	TITLE DDR4 DIMM, 0.85MM PITCH 288CKTS, VERT. SMT (TAB)			
		4 PLACES	± ---	± ---	CHECKED BY CGTAN	DATE 2014/12/18				
		3 PLACES	± ---	± ---	APPROVED BY SHLENI	DATE 2014/12/18				
		2 PLACES	± 0.20	± ---	MATERIAL NO. SEE TABLE		DOCUMENT NO. SD-78730-003		SHEET NO. 5 OF 5	
		1 PLACE	± ---	± ---	DRAFT WHERE APPLICABLE MUST REMAIN WITHIN DIMENSIONS		THIS DRAWING CONTAINS INFORMATION THAT IS PROPRIETARY TO MOLEX INCORPORATED AND SHOULD NOT BE USED WITHOUT WRITTEN PERMISSION			
0 PLACE	± ---	± ---	ANGULAR ± 3 °							