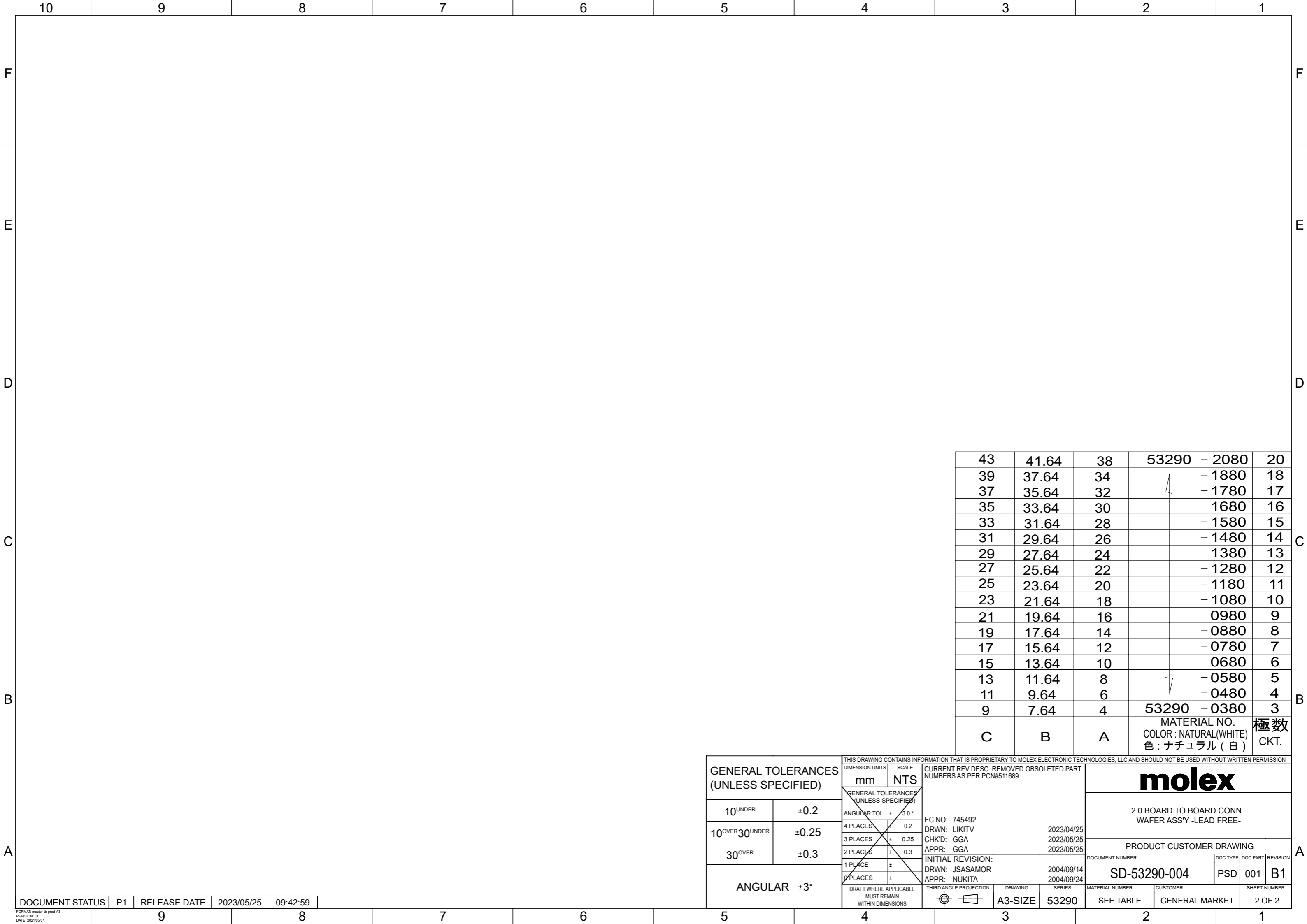


注記 NOTES

- 材料 MATERIAL  
ウエハー PBT (ガラス 15% 入り) WAFER G.F. 15%  
UL94V-0  
ピン : 黄銅, 錫メッキ PIN : BRASS, TIN
- 嵌合相手 : 52418 シリ - ズ MATE WITH : 52418 SERIES
- △ キンクは全ピンに交互に付加。 SET KINK ALTERNATELY TO ALL PIN.
- 各部のソリは 0.2MAX. CAMBER : 0.2MAX.
- 本製品は、53290-\*\*10 の鉛フリー品である。 THIS PRODUCT IS LEAD FREE OF 53290-\*\*10.
- 梱包仕様 PACKAGING  
53290-\*\*8\* トレー TRAY  
53290-\*\*4\* ポリ袋 POLYBAG

|  |       |   |        |  |          |
|--|-------|---|--------|--|----------|
| GENERAL TOLERANCES (UNLESS SPECIFIED)  |       | THIS DRAWING CONTAINS INFORMATION THAT IS PROPRIETARY TO MOLEX ELECTRONIC TECHNOLOGIES, LLC AND SHOULD NOT BE USED WITHOUT WRITTEN PERMISSION |        |  |          |
| 10 <sup>UNDER</sup>                    | ±0.2  | DIMENSION UNITS   | SCALE  |  |          |
| 10 <sup>OVER</sup> 30 <sup>UNDER</sup> | ±0.25 | mm  | NTS    | CURRENT REV DESC: REMOVED OBSOLETE PART NUMBERS AS PER PCN#511689. |          |
| 30 <sup>OVER</sup>                     | ±0.3  | GENERAL TOLERANCES (UNLESS SPECIFIED)   |        | PRODUCT CUSTOMER DRAWING   |          |
| ANGULAR ±3°                            |       | ANGULAR TOL   | ± 3.0° | DOCUMENT NUMBER  |          |
|  |       | 4 PLACES  | ± 0.2  | SD-53290-004   |          |
|  |       | 3 PLACES  | ± 0.25 | DOC TYPE   | DOC PART |
|  |       | 2 PLACES  | ± 0.3  | PSD  | 001      |
|  |       | 1 PLACE   | ±      | REVISION   |          |
|  |       | 0 PLACES  | ±      | B1   |          |
|  |       | DRAFT WHERE APPLICABLE MUST REMAIN WITHIN DIMENSIONS  |        | SHEET NUMBER   |          |
|  |       | THIRD ANGLE PROJECTION  |        | 1 OF 2   |          |
|  |       | DRAWING   |        | MATERIAL NUMBER  |          |
|  |       | A3-SIZE   |        | SEE TABLE  |          |
|  |       | SERIES  |        | CUSTOMER   |          |
|  |       | 53290   |        | GENERAL MARKET   |          |



|    |       |    |   |            |
|----|-------|----|---|------------|
| 43 | 41.64 | 38 | 53290 - 2080  | 20         |
| 39 | 37.64 | 34 | - 1880  | 18         |
| 37 | 35.64 | 32 | - 1780  | 17         |
| 35 | 33.64 | 30 | - 1680  | 16         |
| 33 | 31.64 | 28 | - 1580  | 15         |
| 31 | 29.64 | 26 | - 1480  | 14         |
| 29 | 27.64 | 24 | - 1380  | 13         |
| 27 | 25.64 | 22 | - 1280  | 12         |
| 25 | 23.64 | 20 | - 1180  | 11         |
| 23 | 21.64 | 18 | - 1080  | 10         |
| 21 | 19.64 | 16 | - 0980  | 9          |
| 19 | 17.64 | 14 | - 0880  | 8          |
| 17 | 15.64 | 12 | - 0780  | 7          |
| 15 | 13.64 | 10 | - 0680  | 6          |
| 13 | 11.64 | 8  | - 0580  | 5          |
| 11 | 9.64  | 6  | - 0480  | 4          |
| 9  | 7.64  | 4  | 53290 - 0380  | 3          |
| C  | B     | A  | MATERIAL NO.<br>COLOR : NATURAL(WHITE)<br>色 : ナチュラル (白) | 極数<br>CKT. |

|  |       |   |       |                        |  |                 |  |
|--|-------|---|-------|------------------------|--|-----------------|--|
| GENERAL TOLERANCES<br>(UNLESS SPECIFIED) |       | THIS DRAWING CONTAINS INFORMATION THAT IS PROPRIETARY TO MOLEX ELECTRONIC TECHNOLOGIES, LLC AND SHOULD NOT BE USED WITHOUT WRITTEN PERMISSION |       |                        |  |                 |  |
|  |       | DIMENSION UNITS   | SCALE |                        |  |                 |  |
| 10 <sup>UNDER</sup>                      | ±0.2  | mm  | NTS   | EC NO: 745492          |  | 2023/04/25      |  |
| 10 <sup>OVER</sup> 30 <sup>UNDER</sup>   | ±0.25 | GENERAL TOLERANCES<br>(UNLESS SPECIFIED)  |       | DRWN: LIKITV           |  | 2023/05/25      |  |
| 30 <sup>OVER</sup>                       | ±0.3  | ANGULAR TOL ± 3.0°  |       | CHK'D: GGA             |  | 2023/05/25      |  |
| ANGULAR ±3°                              |       | 4 PLACES ± 0.2  |       | APPR: GGA              |  | 2023/05/25      |  |
|  |       | 3 PLACES ± 0.25   |       | INITIAL REVISION:      |  |                 |  |
|  |       | 2 PLACES ± 0.3  |       | DRWN: JSASAMOR         |  | 2004/09/14      |  |
|  |       | 1 PLACE ±   |       | APPR: NUKITA           |  | 2004/09/24      |  |
|  |       | 0 PLACES ±  |       | THIRD ANGLE PROJECTION |  | DRAWING         |  |
|  |       | DRAFT WHERE APPLICABLE<br>MUST REMAIN<br>WITHIN DIMENSIONS  |       | SERIES                 |  | MATERIAL NUMBER |  |
|  |       |   |       | A3-SIZE                |  | 53290           |  |
|  |       |   |       | CUSTOMER               |  | GENERAL MARKET  |  |
|  |       |   |       | DOCUMENT NUMBER        |  | SD-53290-004    |  |
|  |       |   |       | DOC TYPE               |  | PSD             |  |
|  |       |   |       | DOC PART               |  | 001             |  |
|  |       |   |       | REVISION               |  | B1              |  |
|  |       |   |       | SHEET NUMBER           |  | 2 OF 2          |  |

|                 |    |              |            |          |
|-----------------|----|--------------|------------|----------|
| DOCUMENT STATUS | P1 | RELEASE DATE | 2023/05/25 | 09:42:59 |
|-----------------|----|--------------|------------|----------|