

DO NOT SCALE FROM THIS PRINT

TABLE 1			
ITEM	COMPONENT	-H	-HN
1	SUB ASSEMBLY	SUB-MCX-P-C-H-RA-CA1	SUB-MCX-P-C-HN-RA-CA1
2	CAP	MCX-CAP-001-F	MCX-CAP-001-N
3	FERRULE	MCX-FER-002-F	MCX-FER-002-N
4	INSULATOR	MCX-INS-001	MCX-INS-001

GENDER  
-P: PLUG

TYPE  
-C: CABLE

PLATING SPECIFICATION

-H: 30µ" GOLD CENTER CONTACT,  
3µ" GOLD OUTER CONTACT  
-HN: 30µ" GOLD CENTER CONTACT,  
100µ" NICKEL OUTER CONTACT  
(SEE TABLE 1)

PACKAGING  
-BLANK: INDIVIDUALLY BAGGED  
-B: BULK PACKAGED (QTY=100 MAX)

TERMINATION  
-CA1: CABLE  
(RG174 OR RG316)

ORIENTATION  
-RA: RIGHT ANGLE

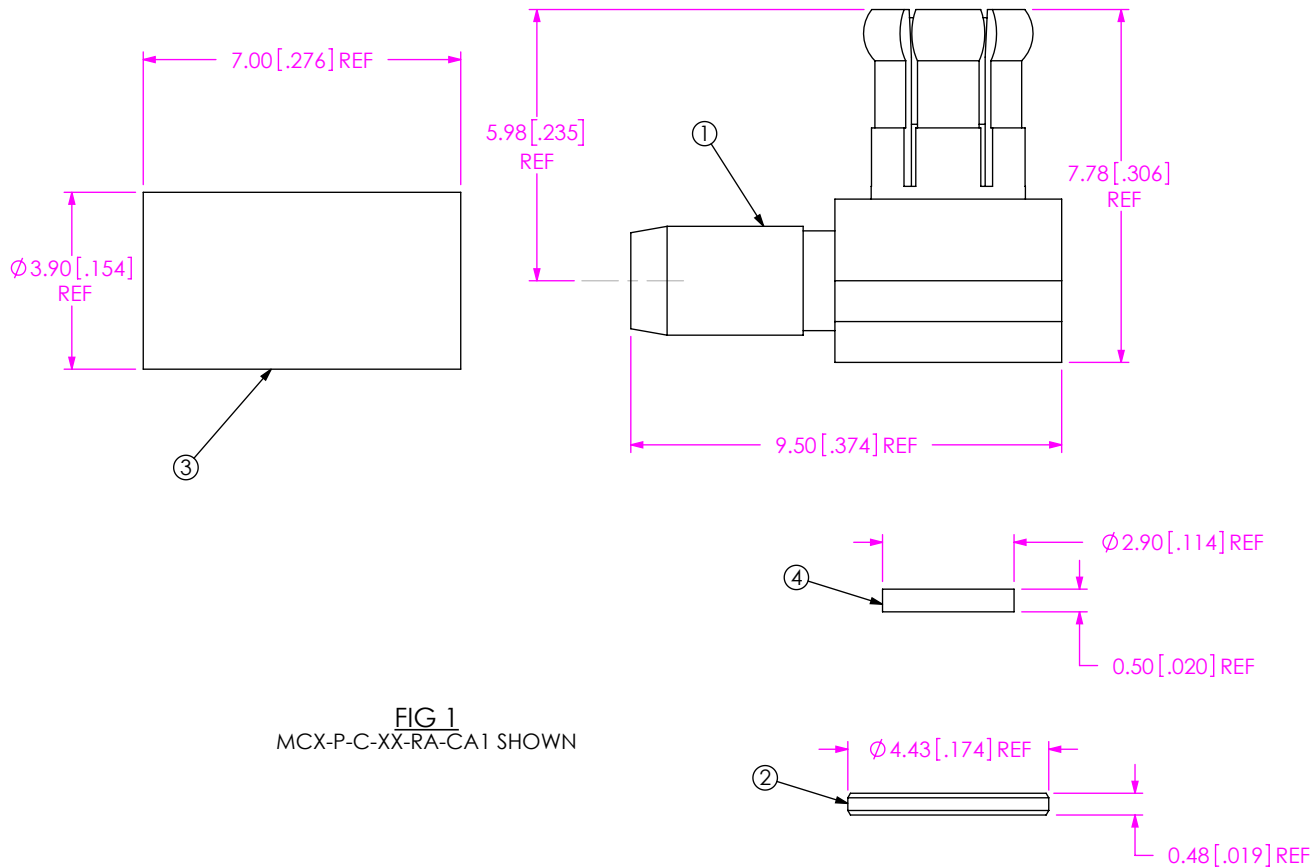


FIG 1  
MCX-P-C-XX-RA-CA1 SHOWN

NOTES:

1. REPRESENTS A CRITICAL DIMENSION.
2. CENTER CONTACT PUSHOUT FORCE: 26.69 N [6LB] MIN
3. NOTE DELETED.
4. NOTE DELETED.
5. PRODUCT TO BE PACKAGED PER PRECISION RF SECTION OF PACKAGING MANUAL.
6. NOTE DELETED.
7. NOTE DELETED.
8. NOTE DELETED.

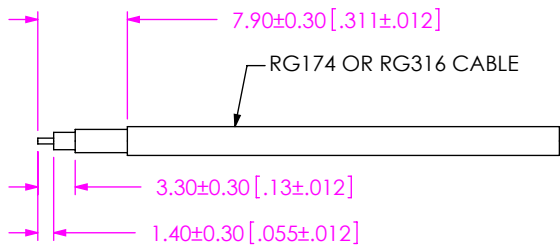
F:\DWG\MISC\MKTG\MCX-P-C-XX-RA-CA1-X-MKT.SLDDRW

UNLESS OTHERWISE SPECIFIED, DIMENSIONS ARE IN MILLIMETERS [INCHES]. TOLERANCES ARE: DECIMALS ANGLES .X: ±0.3 [.01] 5° .XX: ±0.13 [.005] .XXX: ±0.051 [.0020]	PROPRIETARY NOTE THIS DOCUMENT CONTAINS CONFIDENTIAL AND PROPRIETARY INFORMATION AND ALL DESIGN, MANUFACTURING, REPRODUCTION, USE, PATENT RIGHTS AND SALES RIGHTS ARE EXPRESSLY RESERVED BY SAMTEC, INC. THIS DOCUMENT SHALL NOT BE DISCLOSED, IN WHOLE OR PART, TO ANY UNAUTHORIZED PERSON OR ENTITY NOR REPRODUCED, TRANSFERRED OR INCORPORATED IN ANY OTHER PROJECT IN ANY MANNER WITHOUT THE EXPRESS WRITTEN CONSENT OF SAMTEC, INC.
MATERIAL: DO NOT SCALE DRAWING SHEET SCALE: 1:0.166667	
SHELL, FERRULE, CAP: BRASS PIN: BRASS INSULATOR: PTFE	

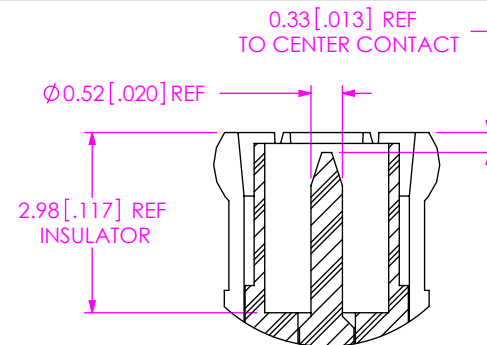


520 PARK EAST BLVD., NEW ALBANY, IN 47150  
PHONE: 812-944-6733 FAX: 812-948-5047  
e-Mail info@SAMTEC.com code 55322

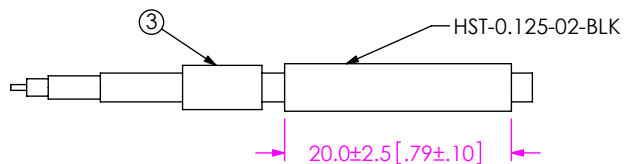
DESCRIPTION: MCX RIGHT ANGLE CABLE PLUG, RG174 & RG316- 50 OHM
DWG. NO. <b>MCX-P-C-XX-RA-CA1-X</b>
BY: R MUSSER 02/06/2008 SHEET 1 OF 3



**IN-PROCESS 1**  
STRIP AND TIN INNER CONDUCTOR

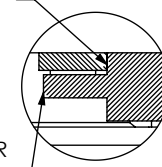


**DETAIL 'A'**  
SCALE 8:1

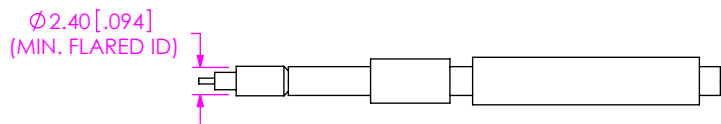


**IN-PROCESS 2**  
ADD HEAT SHRINK TUBE AND FERRULE

END OF CABLE DIELECTRIC SHOULD SEAT AGAINST CONTACT CUP

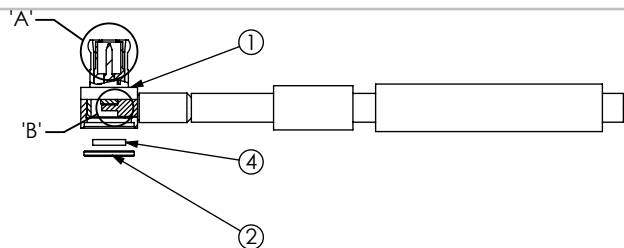


**DETAIL 'B'**  
SCALE 6:1

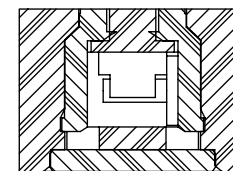


**IN-PROCESS 3**  
FLARE SHIELD

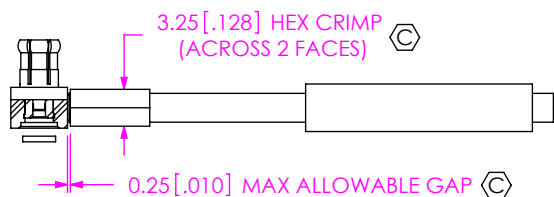
CABLE CENTER CONDUCTOR SHOULD NOT PROTRUDE OUTSIDE CONTACT CUP AFTER FERRULER IS CRIMPED



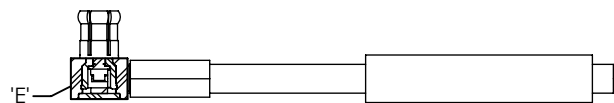
**IN-PROCESS 4**  
ADD SUB-MCX-P-C-XX-RA-CA1



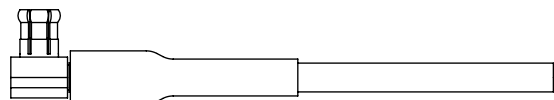
**DETAIL 'E'**  
SCALE 6:1



**IN-PROCESS 5**  
CRIMP FERRULE AND SOLDER SIGNAL PIN  
(USE RF CRIMP HAND TOOL # CAT-RF-FER-01 OR EQUIVALENT)



**IN-PROCESS 6**  
INSERT INSULATOR AND CAP



**IN-PROCESS 7**  
APPLY HEAT SHRINK TUBING

**PROPRIETARY NOTE**  
THIS DOCUMENT CONTAINS CONFIDENTIAL AND PROPRIETARY INFORMATION AND ALL DESIGN, MANUFACTURING, REPRODUCTION, USE, PATENT RIGHTS AND SALES RIGHTS ARE EXPRESSLY RESERVED BY SAMTEC, INC. THIS DOCUMENT SHALL NOT BE DISCLOSED, IN WHOLE OR PART, TO ANY UNAUTHORIZED PERSON OR ENTITY NOR REPRODUCED, TRANSFERRED OR INCORPORATED IN ANY OTHER PROJECT IN ANY MANNER WITHOUT THE EXPRESS WRITTEN CONSENT OF SAMTEC, INC.

DO NOT SCALE DRAWING  
SHEET SCALE: 1:0.66667

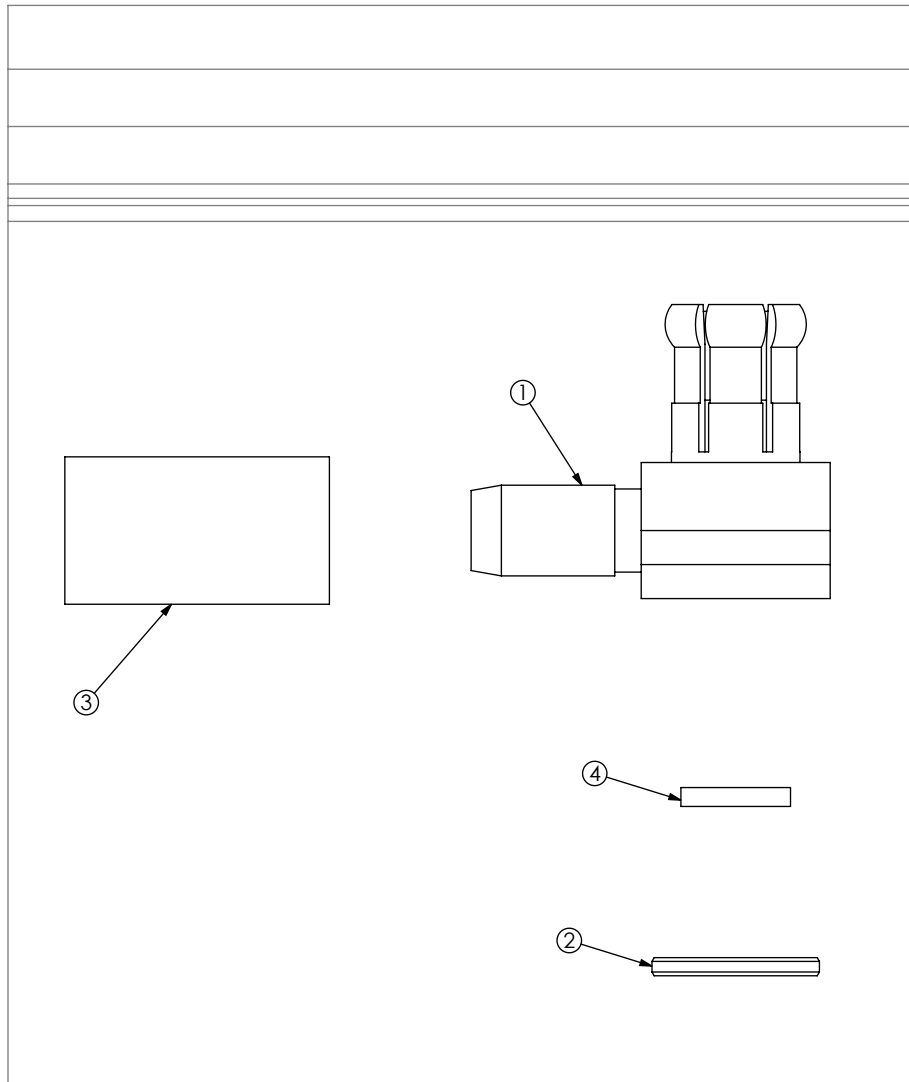


520 PARK EAST BLVD, NEW ALBANY, IN 47150  
PHONE: 812-944-6733 FAX: 812-948-5047  
e-Mail info@SAMTEC.com code 55322

DESCRIPTION:  
MCX RIGHT ANGLE CABLE PLUG, RG174 & RG316- 50 OHM

DWG. NO.  
**MCX-P-C-XX-RA-CA1-X**

BY: R MUSSER 02/06/2008 SHEET 2 OF 3



MCX-P-C-XX-RA-CA1 SHOWN

\* PROPRIETARY NOTE \*  
THIS DOCUMENT CONTAINS CONFIDENTIAL AND PROPRIETARY INFORMATION AND ALL DESIGN, MANUFACTURING, REPRODUCTION, USE, PATENT RIGHTS AND SALES RIGHTS ARE EXPRESSLY RESERVED BY SAMTEC, INC. THIS DOCUMENT SHALL NOT BE DISCLOSED, IN WHOLE OR PART, TO ANY UNAUTHORIZED PERSON OR ENTITY NOR REPRODUCED, TRANSFERRED OR INCORPORATED IN ANY OTHER PROJECT IN ANY MANNER WITHOUT THE EXPRESS WRITTEN CONSENT OF SAMTEC, INC.

DO NOT SCALE DRAWING  
SHEET SCALE: 1:0.666667



520 PARK EAST BLVD, NEW ALBANY, IN 47150  
PHONE: 812-944-6733 FAX: 812-948-5047  
e-Mail info@SAMTEC.com code 55322

DESCRIPTION:  
MCX RIGHT ANGLE CABLE PLUG, RG174 & RG316- 50 OHM

DWG. NO.  
**MCX-P-C-XX-RA-CA1-X**

BY: R MUSSER 02/06/2008 SHEET 3 OF 3