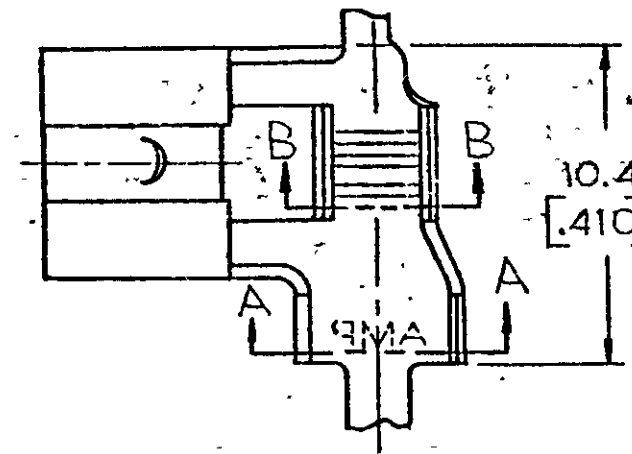
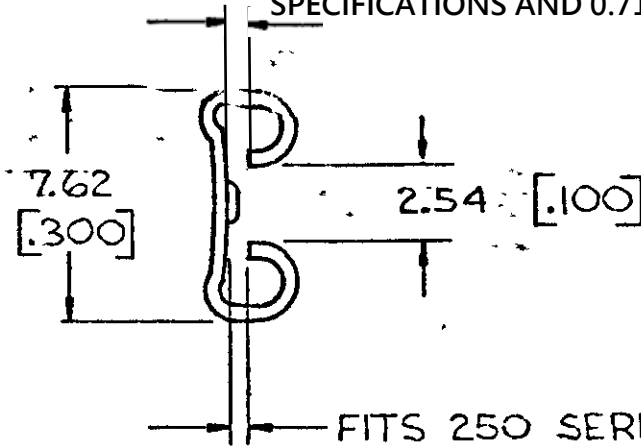


© COPYRIGHT 1980 BY AMP INCORPORATED, HARRISBURG, PA.
 ALL INTERNATIONAL RIGHTS RESERVED. AMP INCORPORATED PRODUCTS
 COVERED BY U. S. AND FOREIGN PATENTS AND/OR UNPUBLISHED PRODUCTS.

UNPUBLISHED COPY NOT TO BE
 REPRODUCED NOR PUBLISHED
 WITHOUT WRITTEN PERMISSION
 OF AMP INCORPORATED.

		REVISIONS			LOC	DIST
NO.	DATE	ZONE	LTR	DESCRIPTION	DATE	APPROVED
1			J	REVISED PER ECR-12-013459	10DEC12	PD
2			J1	REVISED PER ECR-20-009164	14AUG2020	DH

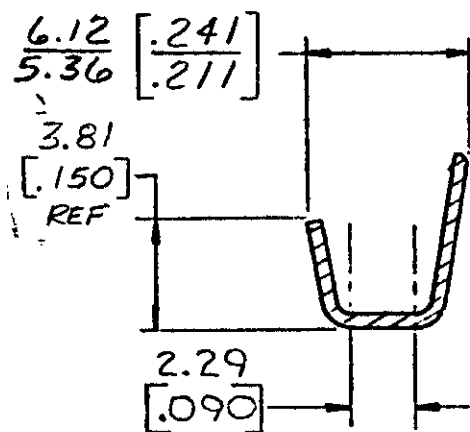
GAP AS REQUIRED TO MEET FORCE SPECIFICATIONS AND 0.71 [.028] MAX



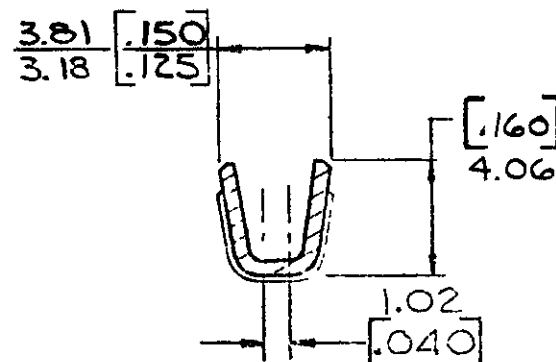
FITS 250 SERIES FASTON TAB. REFER TO CP-14251 FOR TAB DETAILS.

1. ALL DIMENSIONS IN BRACKETS ARE IN INCHES
2. MATING TAB THK. IS 0.84-0.76 [0.033-0.030]

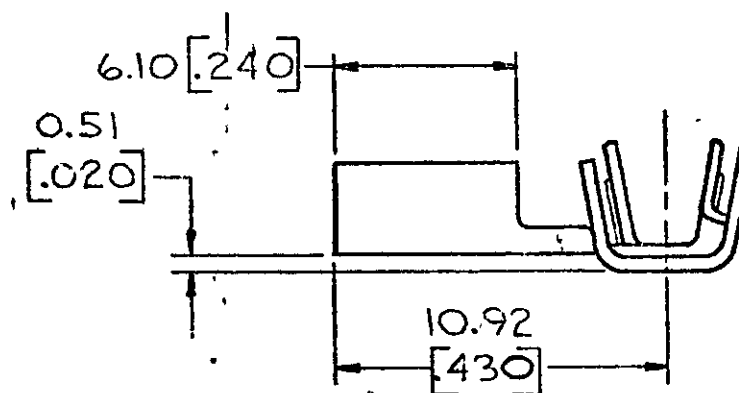
CONTINUOUS STRIP ON REELS



SECTION A-A



SECTION B-B



INSUL RANGE	WIRE RANGE	FINISH	MATERIAL	PART NO
.110-.160	18-14	TIN	BRASS	62811-2
.110-.160	18-14	NONE	BRASS	62811-1

UNLESS OTHERWISE SPECIFIED DIMENSIONS ARE IN INCHES. TOLERANCES ON DECIMALS: ±0.38 [0.015] ANGLES: ±	CONTRACT NO		TE TE Connectivity	
	4-7-80			
	CHK		NAME 250 SERIES PREMIER FLAG FASTON RECEPTACLE	
	4-7-80			
MATERIAL		SIZE		CODE IDENT NO
SEE TABLE		B		00779
FINISH		OTHER APPD		DRAWING NO
SEE TABLE				62811
		SCALE 4-1		SHEET