

"High Frequency Ceramic Solutions"

2.35GHz Balun/Filter Combination

P/N 2345FB39A0050

Detail Specification: 07/03/13

Page 1 of 2

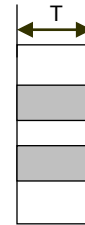
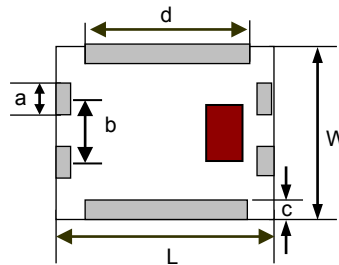
General Specifications

Part Number	2345FB39A0050	Attenuation (dB)	30 min.@ 766~797MHz
Frequency (MHz)	2300 - 2390		20 min.@1532~1594MHz
Unbalanced Impedence	50 Ω		12 min.@2110~2170MHz
Balanced Impedence	50 Ω		29 min.@3066~3186MHz
Insertion Loss	3.2 dB max.		28 min.@3833~3983MHz
Return Loss	11.73 dB min.	Operating & Storage Temp.	-40 to +85°C
Phase Difference	180° ± 10	Reel Quantity	3000
Amplitude Difference	1.5 dB max.	Power Capacity	1 watt max.
		MSL	2 *

*1 yr shelf life in bag; 1 week shelf life out of bag; Vacuum reseal unused reel

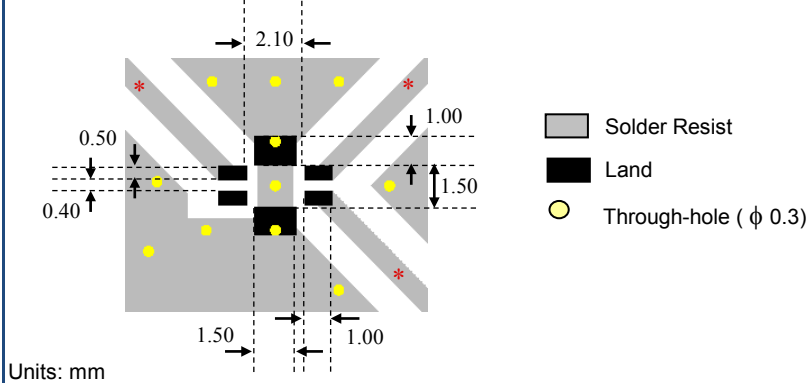
Mechanical Dimensions

	In	mm
L	0.098 ± 0.008	2.50 ± 0.20
W	0.079 ± 0.008	2.00 ± 0.20
T	0.043 ± 0.004	1.10 ± 0.10
a	0.016 ± 0.008	0.40 ± 0.20
b	0.031 ± 0.008	0.80 ± 0.20
c	0.012 +.004/-0.008	0.30 +0.1/-0.2
d	0.075 ± 0.008	1.90 ± 0.20



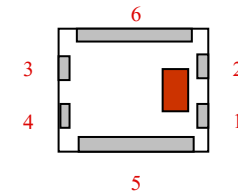
Mounting Considerations

* Line width should be designed to match specified characteristic impedance, depending on PCB material and thickness.



Terminal Configuration

No.	Function
1	Unbalanced Port
2	NC or DC Feed
3	Balanced Port
4	Balanced Port
5	GND
6	GND



Johanson Technology, Inc. reserves the right to make design changes without notice.
All sales are subject to Johanson Technology, Inc. terms and conditions.



"High Frequency Ceramic Solutions"

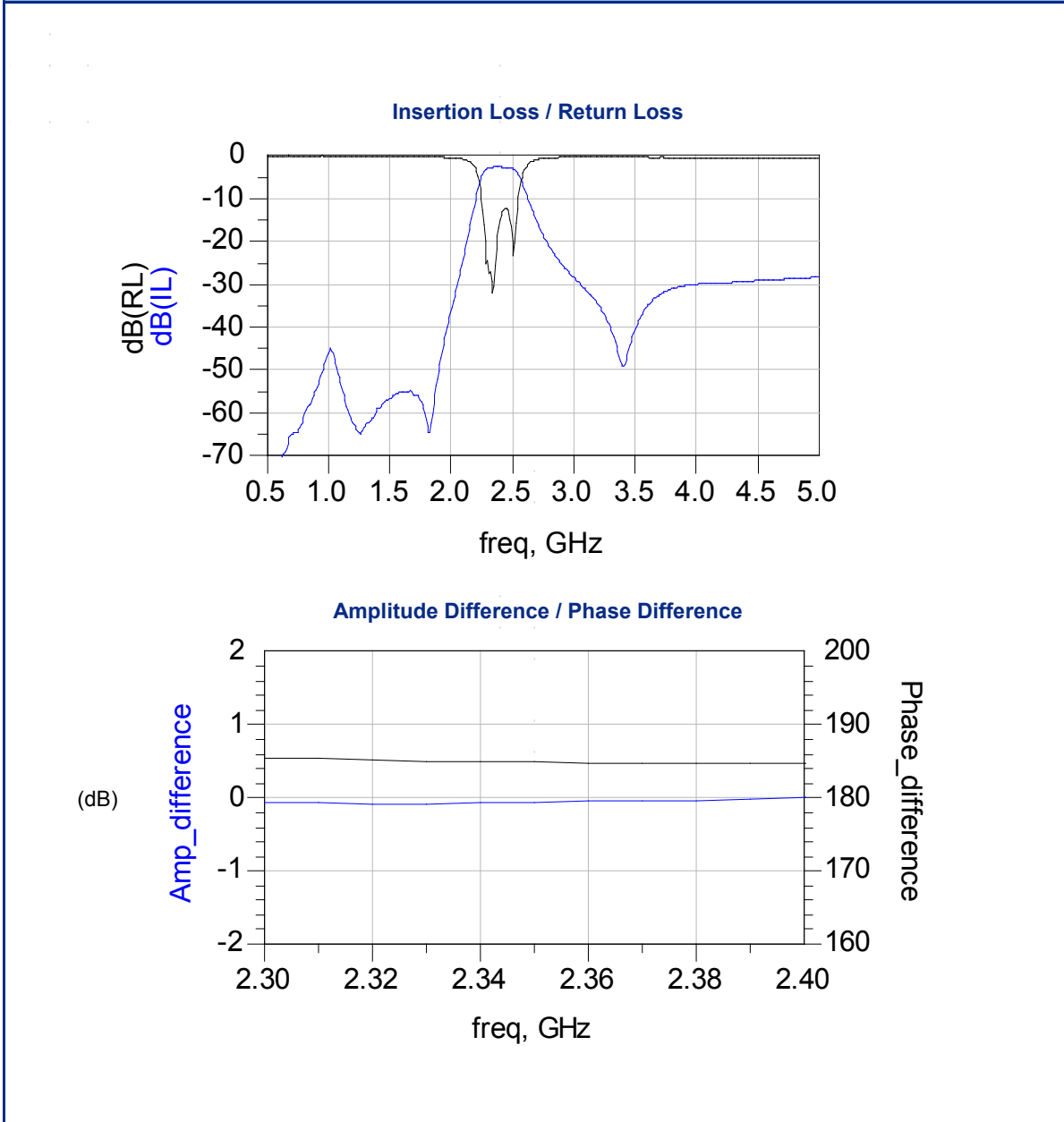
2.35GHz Balun/Filter Combination

P/N 2345FB39A0050

Detail Specification: 07/03/13

Page 2 of 2

Typical Electrical Performance (T=25°C)



Johanson Technology, Inc. reserves the right to make design changes without notice.
All sales are subject to Johanson Technology, Inc. terms and conditions.

