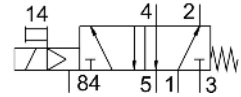


Air solenoid valve VUVS-L25-M52-MD-N14-F8

FESTO

Part number: 575554



Data sheet

Feature	Value
Valve function	5/2, monostable
Actuation type	Electrical
Valve size	26.5 mm
Standard nominal flow rate	1300 l/min
Pneumatic working port	1/4 NPT
Operating pressure	0.25 MPa ... 1 MPa
Operating pressure	2.5 bar ... 10 bar
Structural design	Piston gate valve
Reset method	Mechanical spring
Certification	c UL us - Recognized (OL)
Maritime classification	See certificate
Certificate issuing authority	DNVGL-TAA000011J
Nominal width	6.9 mm
Exhaust air function	With flow control option
Sealing principle	Soft
Mounting position	Any
Manual override	Detenting Non-detenting
Type of control	Pilot-controlled
Pilot air supply port	Internal
Flow direction	Non-reversible
Symbol	00991035
Lap	Overlap
b-value	0.4
C value	5.3 l/sbar
Switching time off	47 ms
On switching time	12 ms
Max. positive test pulse with 0 signal	2000 µs
Max. negative test pulse on 1 signal	3600 µs
Operating medium	Compressed air as per ISO 8573-1:2010 [7:4:4]
Information on operating and pilot media	Operation with oil lubrication possible (required for further use)
Vibration resistance	Transport application test with severity level 2 as per FN 942017-4 and EN 60068-2-6
Shock resistance	Shock test with severity level 2 as per FN 942017-5 and EN 60068-2-27
Corrosion resistance class (CRC)	2 - Moderate corrosion stress
LABS (PWIS) conformity	VDMA24364-B1/B2-L

Feature	Value
Temperature of medium	-10 °C ... 60 °C
Pilot medium	Compressed air as per ISO 8573-1:2010 [7:4:4]
Ambient temperature	-10 °C ... 60 °C
Product weight	311 g
Type of mounting	Optionally: On terminal strip With through-hole
Venting hole connection	Not ducted
Pilot exhaust air port 82	10-32 UNF-2B
Pilot exhaust air port 84	10-32 UNF-2B
Pneumatic connection 1	1/4 NPT
Pneumatic connection 2	1/4 NPT
Pneumatic connection 3	1/4 NPT
Pneumatic connection 4	1/4 NPT
Pneumatic connection 5	1/4 NPT
Note on materials	RoHS-compliant
Seals material	HNBR NBR
Housing material	Die-cast aluminum Painted
Piston slide material	Wrought aluminum alloy
Material of screws	Steel, galvanized