



ANATECH ELECTRONICS INC
RF & Microwave Filters & Products

**806-824 MHz / 851-869 MHz
Cavity Duplexer
Part Number: AD815-860D325**

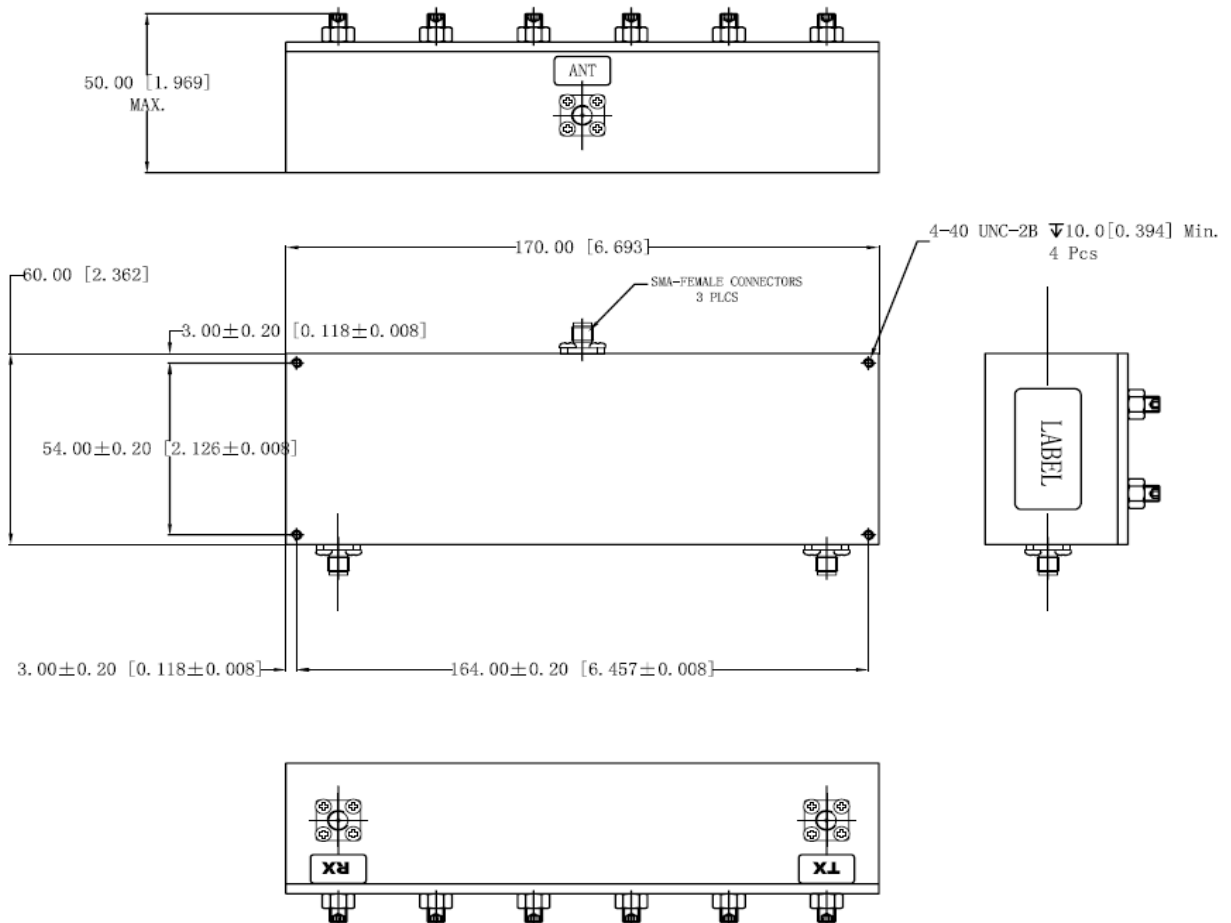


Characteristics	Band 1 - RX	Band 2 - TX
Passband:	806-824 MHz	851-869 MHz
Bandwidth:	18 MHz	18 MHz
Passband Return Loss:	18 dB	18 dB
Passband Insertion Loss:	1.5 dB	1.5 dB
Passband Ripple:	0.2 dB	0.2 dB
Input / Output Impedance:	50 Ohms	50 Ohms
Isolation:	95 dB	95 dB
Power Handling:	10 Watts	10 Watts

Mechanical	
Mounting Method:	Threaded Mounting Holes
Connector Type:	SMA (F)
Dimensions:	170 x 60 x 50mm

Environmental	
Operating Temperature:	-40 to +70 deg.C
Storage Temperature:	-50 to +90 deg.C

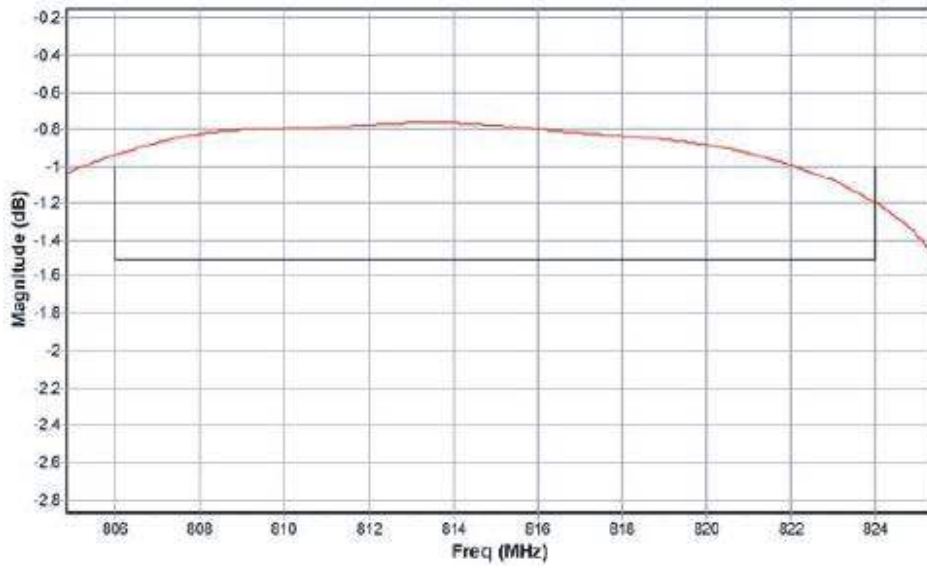
Outline Drawing:



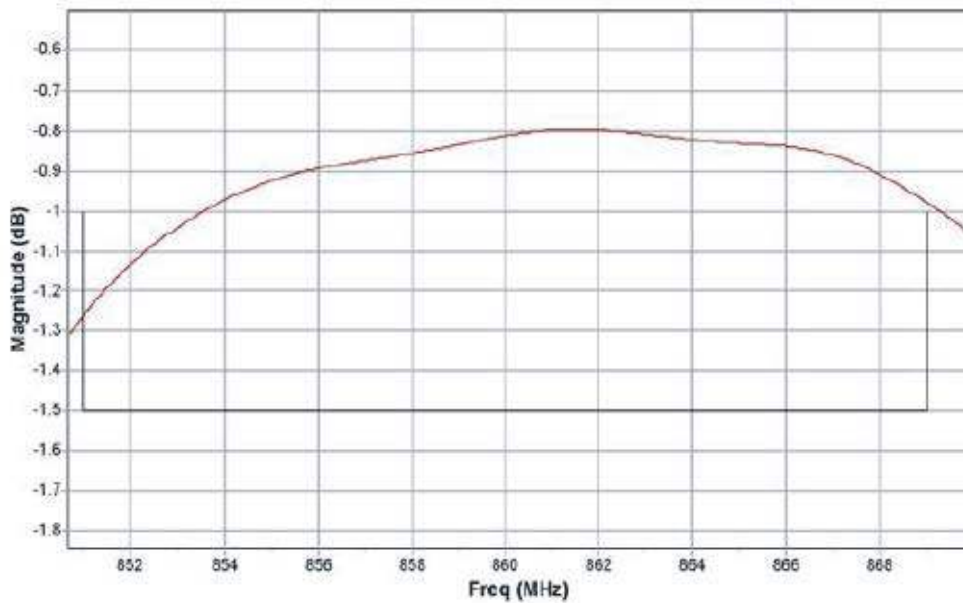


Response Plots:

RX Insertion Loss:



TX Insertion Loss:





ANATECH ELECTRONICS INC
RF & Microwave Filters & Products

806-824 MHz / 851-869 MHz
Cavity Duplexer
Part Number: AD815-860D325



Response Plot:

RX/TX Return Loss and Rejection

