

## Housing - HC-B 32-TMS-100-O1STM32S-EEE - 1580517

Please be informed that the data shown in this PDF Document is generated from our Online Catalog. Please find the complete data in the user's documentation. Our General Terms of Use for Downloads are valid (<http://download.phoenixcontact.com>)



HEAVYCON ADVANCE B32 sleeve housing, for increased environmental requirements, EMC conductive, with Allen screw locking, 1 x M32 x 1.5 with lateral cable outlet



### Key commercial data

Packing unit	1 PCE
Custom tariff number	85389099
Country of origin	Germany

### Technical data

#### Dimensions

Height	110 mm
Width	94 mm
Length	126 mm
Length of the assembly cutout	86 mm
Width of the assembly cutout	71 mm

#### Ambient conditions

Schutzart Gehäuse (IP)	IP65
	IP68 (0.2 bar/24 h)
	IP69K
Ambient temperature (operation)	-40 °C ... 125 °C

#### General

Note	For contact inserts HC-B16, BB32, D40, DD72, HS6, HV6, M, K
Design	B32
Housing type	Sleeve housings

# Housing - HC-B 32-TMS-100-O1STM32S-EEE - 1580517

## Technical data

### General

Locking type	Screw locking
Torque	3 Nm (Locking screw)
Fixing screws	M6 (screw head: 5 mm Allen screw)
No. of cable exits	1
Cable exit	Lateral
Screw connection	None
Type of the screw connection	1x M32
Housing material	Die-cast aluminum, salt water resistant
Housing surface material	Uncoated
Seal material	NBR, conductive
Material lock	High-grade steel
Assembly instructions	In order to guarantee that the ground conductor contact functions even when plugged in at an angle, the two panel mounting flanges must have sufficient electrical contact with the metal mounting panel.
Connection	To ensure optimum shielding, any insulating power coating must be removed from the profile gasket area on the control cabinet panel. Tightening torque of locking screw: 3 Nm.

## Classifications

### eCl@ss

eCl@ss 4.0	27140816
eCl@ss 4.1	27140816
eCl@ss 5.0	27143424
eCl@ss 5.1	27143424
eCl@ss 6.0	27261203
eCl@ss 7.0	27440202
eCl@ss 8.0	27440202

### ETIM

ETIM 2.0	EC000437
ETIM 3.0	EC000437
ETIM 4.0	EC000437
ETIM 5.0	EC000437

### UNSPSC

UNSPSC 6.01	31261501
UNSPSC 7.0901	31261501
UNSPSC 11	31261501

# Housing - HC-B 32-TMS-100-O1STM32S-EEE - 1580517

## Classifications

### UNSPSC

UNSPSC 12.01	31261501
UNSPSC 13.2	31261501

## Accessories

### Accessories

#### Full screw connection

Cable gland - HC-K-KV-M32(15-21) - 1690642



Plastic screw connection up to 5 bar, thread length: 10 mm, cable diameter: 15 - 21 mm, WAF 36, screw connection: M32

Cable gland - HC-M-KV-M32(14-21) - 1690587



Metal screw connection up to 5 bar, thread length: 8 mm, cable diameter: 14 - 21 mm, WAF 34, screw connection: M32

Cable gland - HC-M-KV-M32(19-27) - 1646010



Metal screw connection up to 5 bar, thread length: 8 mm, cable diameter: 19 - 27 mm, WAF 43, screw connection: M32

Cable gland - HC-EMV-KV-M32(11-21) - 1690529



EMC screw connection up to 5 bar, thread length: 9 mm, cable diameter: 11.0 - 21.0 mm, WAF 36, screw connection: M32

### Panel mounting flange

## Housing - HC-B 32-TMS-100-O1STM32S-EEE - 1580517

### Accessories

Mounting flange - HC-B 32/48-AF - 1580524



HEAVYCON-ADVANCE mounting flange for screw locking HC B 32/48

---

### Protective cover

Protective covers - HC-B 32-TMS-SD-IP65 - 1580539



HEAVYCON ADVANCE B32 IP65 protective cover, for panel mounting side, screw locking with 2 Allen screws, with seal, 3 mm retaining cord eyelet

---

### Screwdriver tools

Screwdriver - SF-BIT-HEXB 5-89 - 1208911



Screw bit, hexagonal with ball head, E6.3-1/4" drive, size: Hex 5 x 89 mm, hardened, suitable for holder according to DIN 3126-F 6.3/ISO 1173

Screwdriver - SF-M BH - 1212070



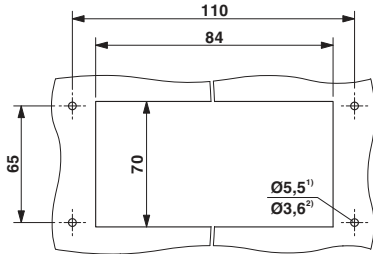
Bit screwdriver, with 1/4" quick-action chuck, handle length 119 mm, 2-component handle, with non-slip grip, suitable for bits according to DIN 3126-C 6.3 and E 6.3/ISO 1173, magnetic

---

### Drawings

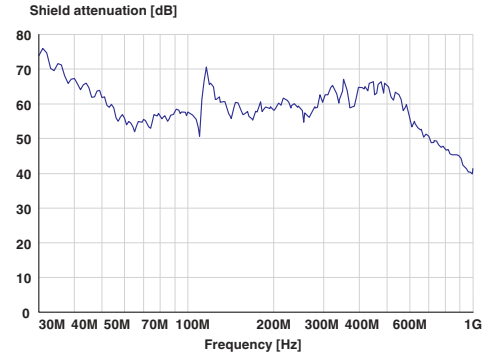
# Housing - HC-B 32-TMS-100-O1STM32S-EEE - 1580517

Dimensioned drawing



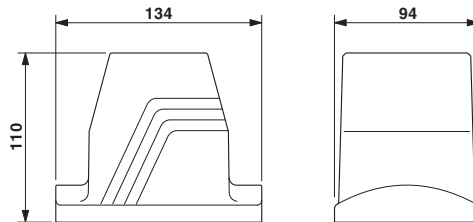
- Mounting cutout  
1) Standard M5 screw  
2) Self-tapping (Torx® 20, M4)

Diagram



Shield attenuation

Dimensioned drawing



Dimensional drawing