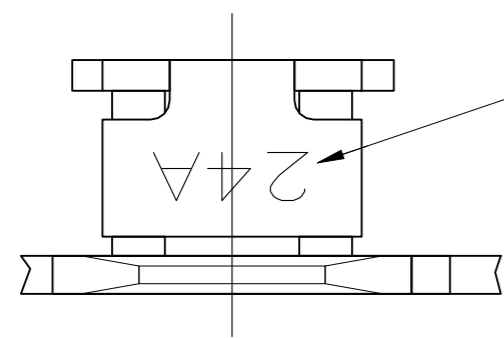
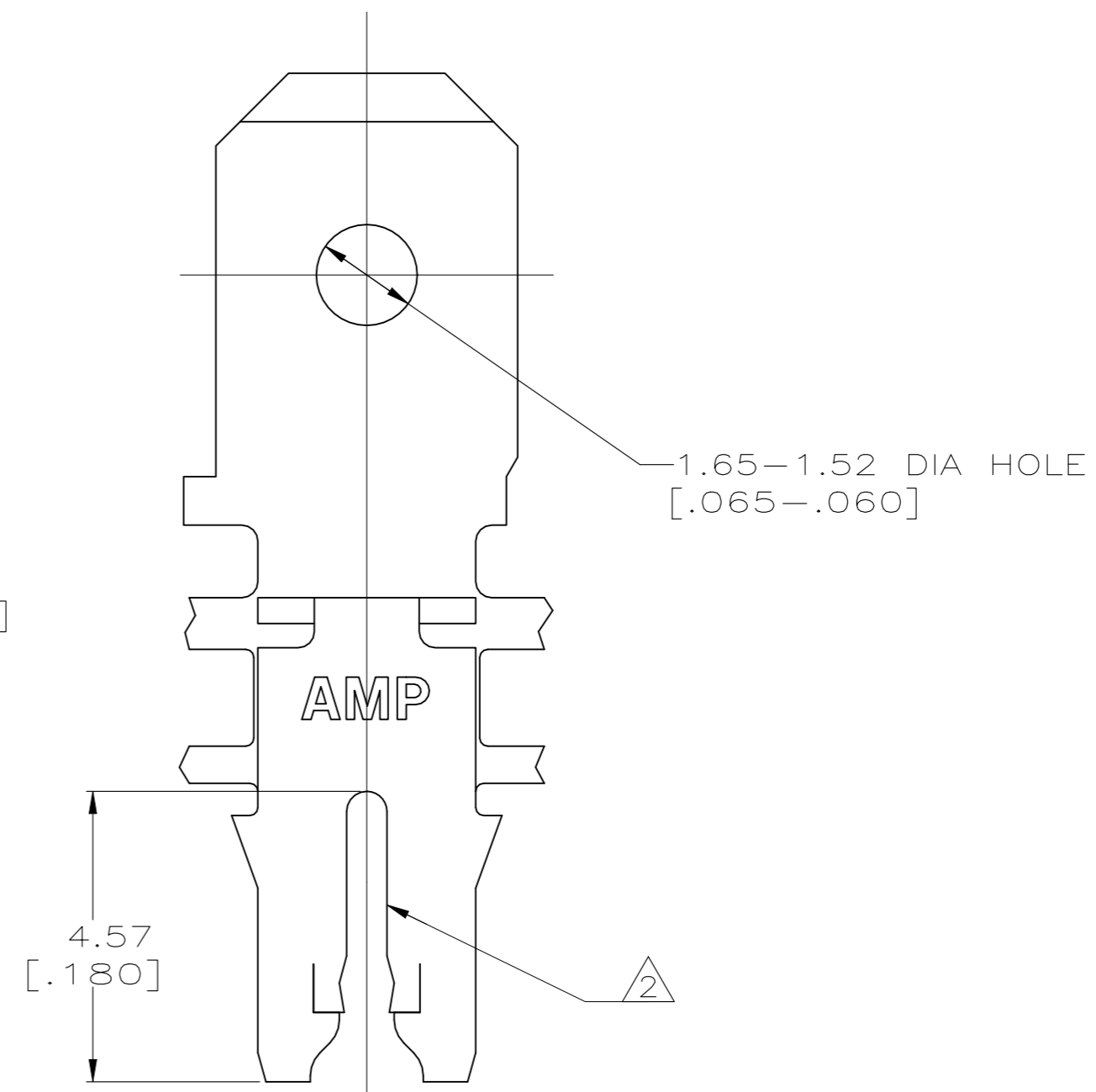
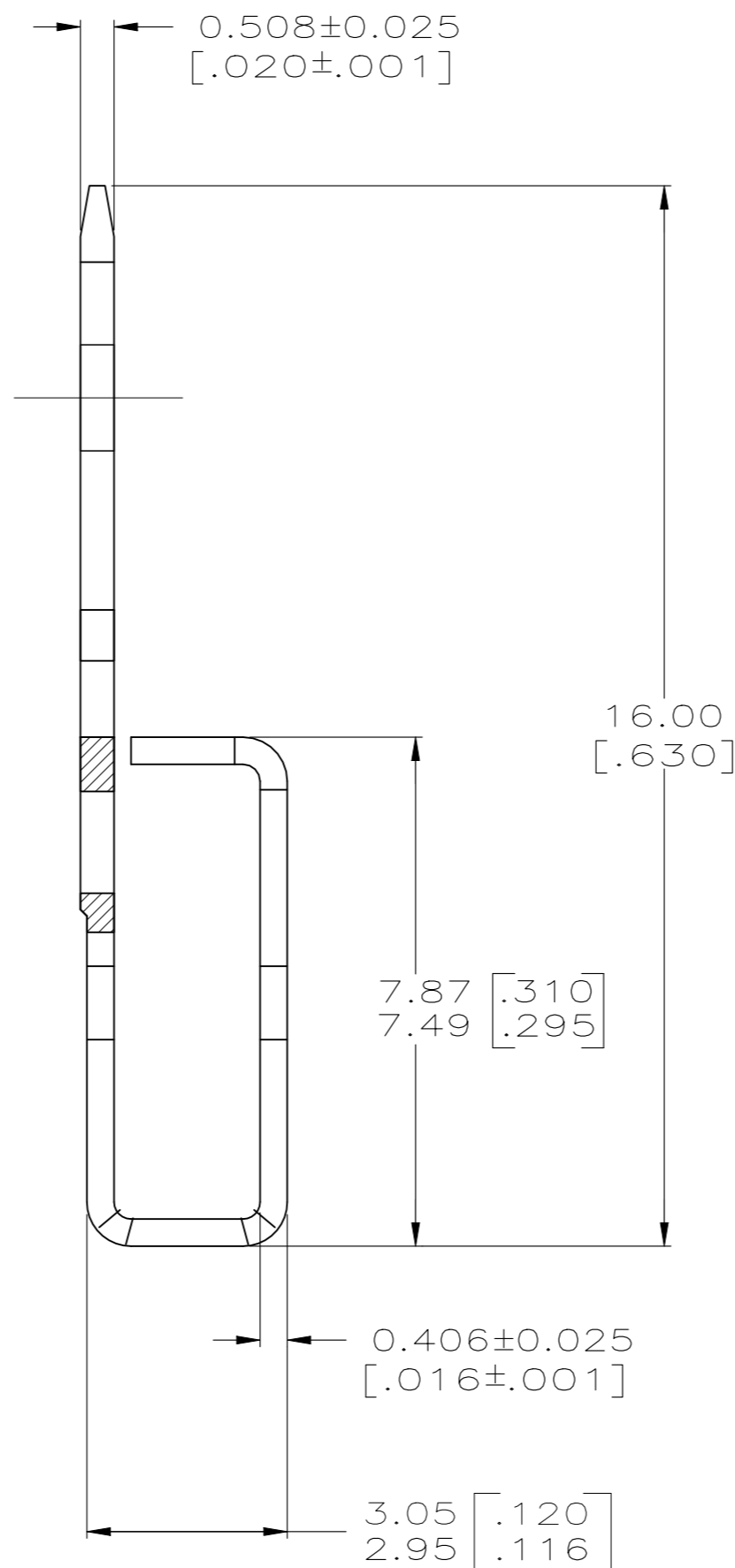
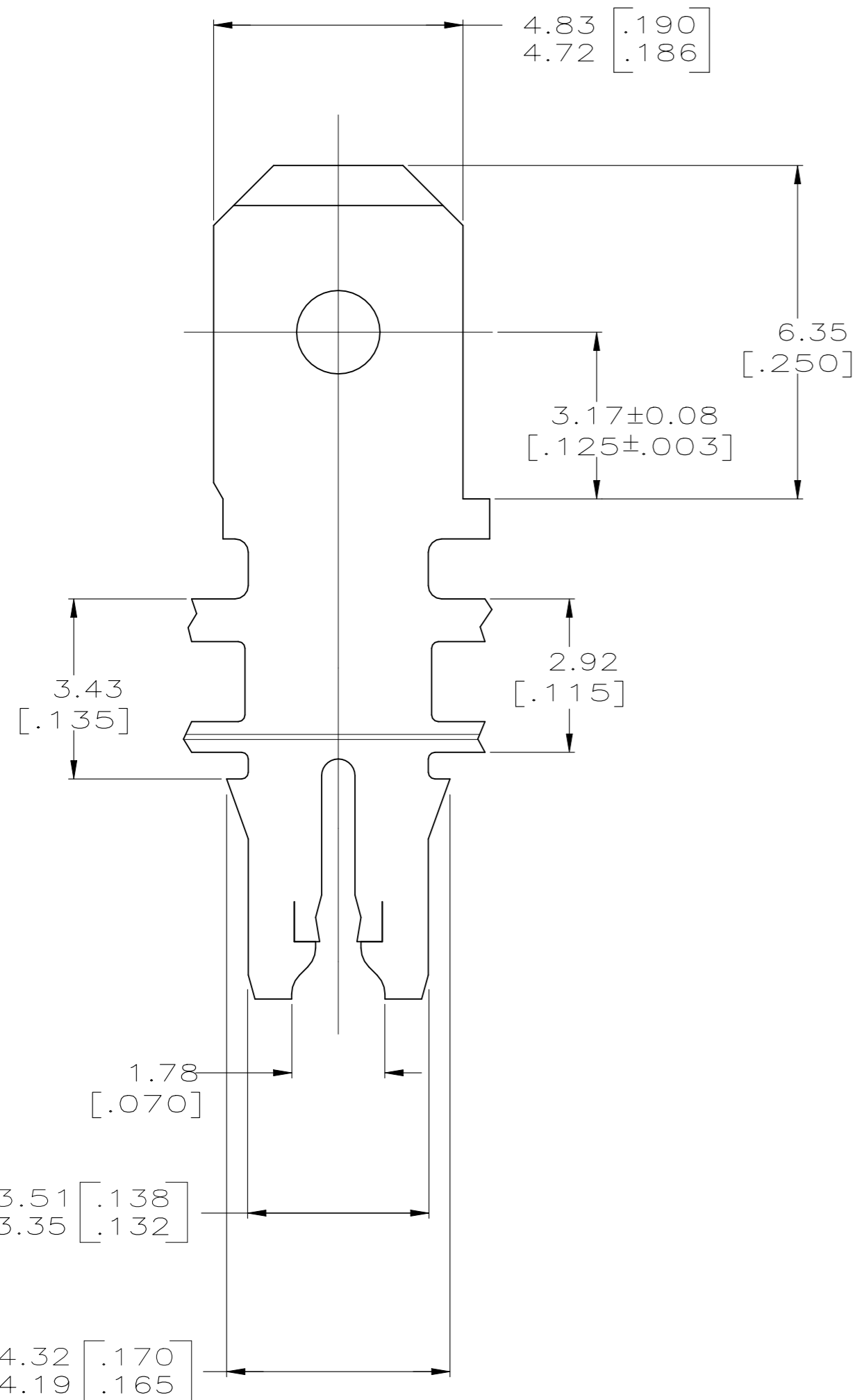


THIS DRAWING IS UNPUBLISHED. RELEASED FOR PUBLICATION  
 © COPYRIGHT - By - ALL RIGHTS RESERVED.

LOC		DIST		REVISIONS			
P	LTR	DESCRIPTION		DATE	DWN	APVD	
AF	50	E3		REVISED PER ECR-23-171791	04APR2023	PS CJH	



IDENTIFICATION NUMBER 24A FOR MAGNET WIRE RANGE



- 1 CONTINUOUS STRIP ON REELS WITH TERMINALS LOCATED ON 5.59±0.08 [.220±.003] CENTERS
- 2 SLOT TERMINATES A SINGLE MAGNET WIRE ONLY. ALUMINUM RANGE: 0.97-1.22mm [#18.5-#16.5] AWG. ALUMINUM RANGE: 1.25mm WIRE ACCEPTED
- 3 AFTER INSERTION INTO PLASTIC HOLDER TAB PORTION MUST BE BENT OVER 45° TO 90° OR POTTED-IN TO PREVENT PULL-OUT WHEN MATING RECEPTACLE IS DISCONNECTED.
- 4 ANVIL HEIGHT TO BE 2.29±0.13 [.090±.005]
- 5 VARNISH RESIST OVER TIN PLATE

5	REVERSE	TIN PLATE	63668-3
	STANDARD	TIN PLATE	63668-2
5	STANDARD	TIN PLATE	63668-1
	REELING	FINISH	PART NO

THIS DRAWING IS A CONTROLLED DOCUMENT.

DWN	MICHAEL S. FEHER	9/3/92		TE Connectivity TERMINAL, TAB, 4.75 [.187] FASTON, MAG-MATE			
CHK	JEFF R. RUTH	9/4/92					
APVD	TERRY SHUTTER	9/4/92					
NAME							
DIMENSIONS:	TOLERANCES UNLESS OTHERWISE SPECIFIED:	PRODUCT SPEC	108-2012	SIZE	CAGE CODE	DRAWING NO	RESTRICTED TO
MM [ INCHES ]	0 PLC ± - 1 PLC ± - 2 PLC ± 0.25 [.010] 3 PLC ± - 4 PLC ± - ANGLES ± -	APPLICATION SPEC	114-2046	A2	00779	C=63668	-
MATERIAL	FINISH	WEIGHT	CUSTOMER DRAWING	SCALE	SHEET	REV	
BRASS	SEE TABLE	-		10:1	1 OF 1	E3	