

4

3

2

1

THIS DRAWING IS UNPUBLISHED.

RELEASED FOR PUBLICATION

© COPYRIGHT

ALL RIGHTS RESERVED.

LOC DIST

REVISIONS

P	LTR	DESCRIPTION	DATE	DWN	APVD
	J1	ECR-12-014741	20AUG2012	XZ	SX

# REPLACED BY OCEAN STYLE APPLICATOR PART NUMBER 2151063-1

FOR REPLACEMENT PARTS FOR APPLICATOR 1528026  
REFER TO ADDITIONAL PAGE(S). SPARE PARTS KIT (IF LISTED)  
WILL REMAIN AVAILABLE.

THE REPLACEMENT OCEAN STYLE APPLICATOR HAS THE  
SAME TERMINATOR/PRESS INTERFACE AS APPLICATOR  
1528026

Dimensioning and tolerancing per ASME Y14.5M-2009


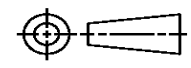
B

A

Dimensioning and tolerancing per ASME Y14.5M-2009

B

A

THIS DRAWING IS A CONTROLLED DOCUMENT.		DWN X. ZHAO	 TE Connectivity	
DIMENSIONS:		CHK S. XI		
		APVD S. XI	NAME	
		TOLERANCES UNLESS OTHERWISE SPECIFIED:		SIDE FEED HDI F/ADJ APPL
MATERIAL		PRODUCT SPEC	DRAWING NO	
FINISH		APPLICATION SPEC	SIZE	RESTRICTED TO
		WEIGHT	A3	©- 1528026
			SCALE	SHEET 1 OF 2 REV J1

Dimensioning and tolerancing per ASME Y14.5M-2009

PART NUMBER	REV	FIRST USED	TERMINATOR	FEED TYPE	DESCRIPTION
1528026-1	J	-	LEADMAKER	MECH POST FEED	CUTS CARRIER
1528026-2	J	-	BENCH	MECH PRE FEED	CUTS CARRIER
1528026-6	J	-	LEADMAKER	MECH POST FEED	CONTINUOUS CARRIER
7-1528026-1	J	-	LEADMAKER	MECH POST FEED	-1 AND SPARE PARTS
7-1528026-2	J	-	BENCH	MECH PRE FEED	-2 AND SPARE PARTS
7-1528026-6	J	-	LEADMAKER	MECH POST FEED	-6 AND SPARE PARTS
7-1528026-7	D	-	-	-	SPARE PARTS KIT

CRIMP DATA (AMP TERMINAL)			
TERMINAL NAME: JUNIOR POWER TIMER CONTACT A			
CRIMP	SIZE	TYPE	RANGE
WIRE	2.54 [.100 IN]	F	1.25mm <sup>2</sup> - 2.50mm <sup>2</sup>
INSUL	4.19 [.165 IN]	0	3.45 MAX [.136 IN]
WIRE STRIP LENGTH		APPL INSTRUCTION	
SEE APPL. SPECS.		408-8322 & 408-8490	
TERMINAL	114-18051 (B)	-	FEED
APPL SPEC	114-18050 (A)	114-18387 (C)	14.0 [.551 IN]

TERMINALS APPLIED				
TERMINAL	SEAL	-	-	-
964273 (A)	963292	-	-	-
964302 (B)	963293	-	-	-
1241396 (C)	-	-	-	-
1241872 (A)	-	-	-	-
-	-	-	-	-
MFR PN	TE PN	-	-	-
15327890	2-964302-1(B)	-	-	-

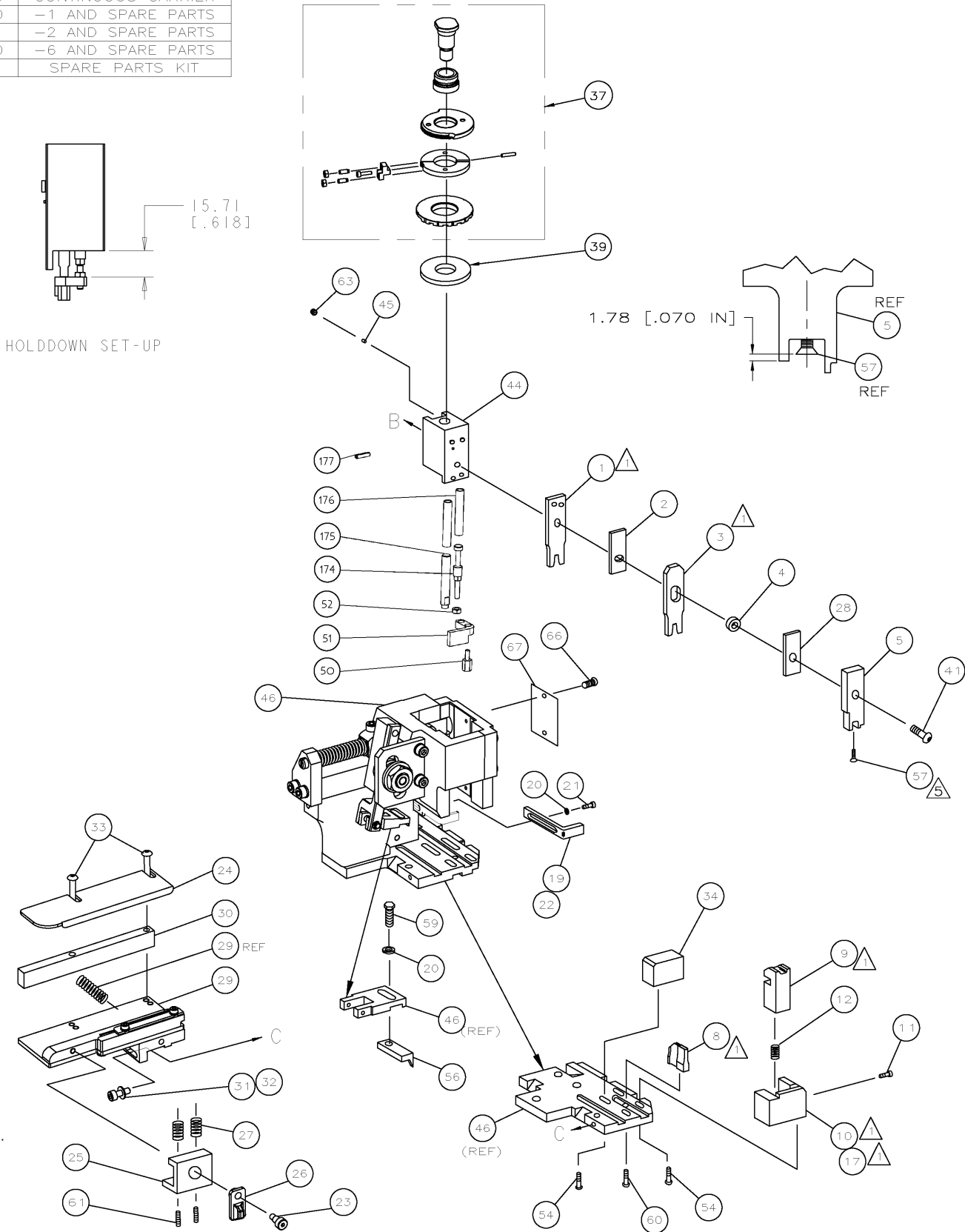
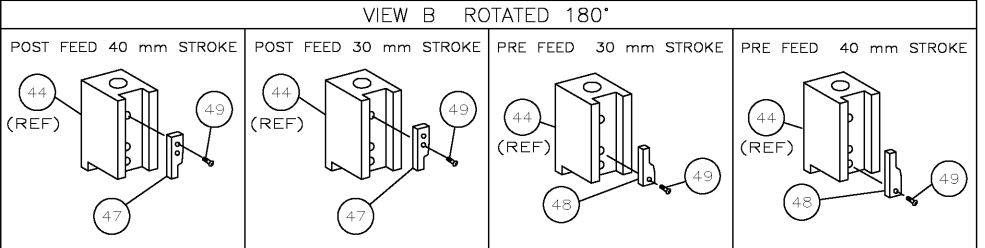
  

WIRE SIZE	CRIMP HEIGHT	REF SETTING
mm <sup>2</sup> awg	*	
2.50mm <sup>2</sup>	1.86 ±0.05 [.073 ±.002 IN]	A 6
2.00mm <sup>2</sup>	1.70 ±0.05 [.067 ±.002 IN]	B 6
1.50mm <sup>2</sup>	1.55 ±0.05 [.061 ±.002 IN]	C 7
1.25mm <sup>2</sup>	1.47 ±0.05 [.058 ±.002 IN]	D 2

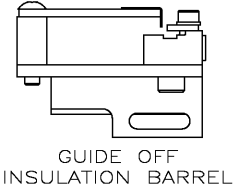
  

SET UP GAGE	LAYOUT
458637-3	L1426009

- RECOMMENDED SPARE PARTS.
- GREASE RAM, CAM, CAM FOLLOWER AND FEED ROD LIGHTLY.
- LUBRICATE DAILY PER THE APPLICATOR INSTRUCTION SHEET SUPPLIED WITH THE APPLICATOR.
- THIS APPLICATOR APPLIES TERMINAL WITH A SEAL. INSULATION DIA QUOTED IS OUTSIDE DIAMETER OF SEAL. WIRE INSULATION DIA IS DEPENDENT ON SEAL BEING APPLIED.
- APPLY TORQ-SEAL IN ALLEN SOCKET TO FILL HOLE AFTER FLAT HD HAS BEEN ADJUSTED TO CORRECT HEIGHT AT QUALIFICATION. APPLY #1-23419-5 LOC-TITE TO THREADS.
- SEAL PART NO. 963292-1 IS FOR INSULATION DIA 2.7 - 3.0  
SEAL PART NO. 963293-1 IS FOR INSULATION DIA 2.0 - 2.7



- IF MORE THAN ONE TERMINAL IS APPLIED BY THIS APPLICATOR, FEED MAY REQUIRE ADJUSTMENT WHEN CHANGING FROM ONE TO ANOTHER.
- DELPHI PACKARD'S TERMINAL IS APPLICABLE.
- \* WARNING:**  
ON INSTALLATION, SET WIRE DISC TO LARGEST WIRE SIZE SETTING. USE OF SETTINGS BELOW MIN REQ'D CRIMP HEIGHT SETTING WILL CAUSE DAMAGE TO CRIMP TOOLING.



REVISONS								LOC	DIST	DATE	OWN	APPD		
REV	DESCRIPTION	DATE	OWN	APPD	REV	DESCRIPTION	DATE	OWN	APPD	REV	DESCRIPTION	DATE	OWN	APPD
J	ECR-111-021724	OCT11	RS	SX										
A	66													
-1	1 1 1 1 1 1	993111-8				PIN,SLOTTED SPRING 3.0X12.0								
-2	2 2 2 2 2 2	3-22280-7				SPRING,COMPRESSION								
-1	1 1 1 1 1 1	1752353-1				GUIDE PIN,HOLDDOWN								
-1	1 1 1 1 1 1	1901680-1				GUIDE PIN,HOLDDOWN								
-1	1 1 1 1 1 1	1528026				PRINT, APPLICATOR LOG SHEET								
-1	1 1 1 1 1 1	1338705-3				DOCUMENTATION PACKAGE								
-1	1 1 1 1 1 1	461264-5				PLATE, IDENTIFICATION								
-2	2 2 2 2 2 2	21017-2				SCR,DRIVE(#2x.19)ID PLATE								
-1	1 1 1 1 1 1	3-18031-0				SCR,SKT SET(M6X6 LW)RAM								
-2	2 2 2 2 2 2	2-18032-5				SCR,SET(M5X20)DRAG								
-1	1 1 1 1 1 1	18024-7				SCR,BHC(M4X10)ANVIL								
-1	1 1 1 1 1 1	5-18022-2				SCR,HEX(M4X8)FEED FINGER								
-1	1 1 1 1 1 1	985575-3				SCR,FHC(M3X10)DEP								
-1	1 1 1 1 1 1	1338685-1				PAWL, FEED								
-4	4 4 4 4 4 4	18024-8				SCR,BHC(M4X12)SHEAR HOLDER								
-1	1 1 1 1 1 1	1-18030-0				NUT,HEX,REG M3.5								
-1	1 1 1 1 1 1	1901681-1				HOLD-DOWN,TERMINAL								
-1	1 1 1 1 1 1	2-1752354-5				STANDOFF,HOLD-DOWN								
-1	1 1 1 1 1 1	18024-3				SCR,BHC(M3X10)CAM								
-1	-1 -1 -1 -1 -1	1338675-1				CAM, PRE FEED 30 & 40 mm ST								
-1	-1 -1 -1 -1 -1	1338676-1				CAM, POST FEED 30 & 40 mm ST								
-1	1 1 1 1 1 1	1320999-3				APPLICATOR BASIC SUBASSY								
-1	1 1 1 1 1 1	690191-1				PLUG, NYLON								
-1	1 1 1 1 1 1	1633724-1				RAM								
-1	1 1 1 1 1 1	2-18024-6				SCR,BHC(M8X25)RAM								
-1	1 1 1 1 1 1	690125-1				WASHER, LAMINATED								
-1	1 1 1 1 1 1	879103-2				FINE ADJUST HEAD SUBASSY								
-1	1 1 1 1 1 1	1752356-4				SUPPORT, TERMINAL								
-2	2 2 2 2 2 2	1-18024-0				SCR,BHC(M4X20)STRIP GUIDE								
-1	1 1 1 1 1 1	18027-2				WASHER, FLAT(M4)								
-1	1 1 1 1 1 1	1-18023-2				SCR,SKT CAP(M4X12)MOUNT BLOCK								
-1	1 1 1 1 1 1	1320908-3				SPACER, STRIP GUIDE								
-1	1 1 1 1 1 1	1633073-2				STRIP GUIDE PLATE ASSY								
-1	1 1 1 1 1 1	1-455888-7				SPACER, FRONT SHEAR DEP								
-2	2 2 2 2 2 2	1-22284-0				SPRING, DRAG								
-1	1 1 1 1 1 1	356835-1				LEVER, DRAG RELEASE								
-1	1 1 1 1 1 1	240792-1				DRAG, TERMINAL								
-1	1 1 1 1 1 1	1320928-3				GUIDE, STRIP (REAR)								
-1	1 1 1 1 1 1	980371-4				SCR,SHC SHLD								
-1	-1 -1 -1 -1 -1	690472-2				STRIPPER								
-1	1 1 1 1 1 1	1-18023-1				SCR,SHC(M4X10)STRIPPER								
-2	2 2 2 2 2 2	18025-2				WASHER,LOCK(M4)STRIPPER								
-1	-1 -1 -1 -1 -1	690472-1				STRIPPER								
-1	-1 -1 -1 -1 -1	1338684-2				HOLDER, SHEAR, FRONT (NO-CUT)								
-1	1 1 1 1 1 1	3-22280-3				SPRING, SHEAR								
-1	1 1 1 1 1 1	356885-5				STOP, SHEAR								
-1	-1 -1 -1 -1 -1	1-1320921-0				HOLDER, SHEAR, FRONT (CUT)								
-1	1 1 1 1 1 1	318707-1				SHEAR, FLOAT (FRONT)								
1	2 2 2 2 1 1	1333206-2				ANVIL								
-1	1 1 1 1 1 1	1338680-1				DEPRESSOR, SHEAR (FRONT)								
-1	1 1 1 1 1 1	238011-4				SPACER, BLOCK CRIMPER								
1	2 2 2 2 1 1	2-562244-2				CRIMPER, INSULATION								
-1	1 1 1 1 1 1	455888-6				SPACER, CRIMPER								
1	2 2 2 2 1 1	456407-5				CRIMPER, WIRE								

QTY REQD PER ASSY				PARTS LIST			
THIS DRAWING IS A CONTROLLED DOCUMENT.				TE CONNECTIVITY Harrisburg, PA 17105-3608			
DIMENSIONS: INCHES				TOLERANCES UNLESS OTHERWISE SPECIFIED:			
0 PLC ± .005				1 PLC ± .005			
2 PLC ± .005				3 PLC ± .005			
4 PLC ± .005				ANGLES ± .5			
MATERIAL: FRESH				FINISH: FRESH			
CUSTOMER DRAWING				SCALE: 1 OF 1			