

1

2

3

4

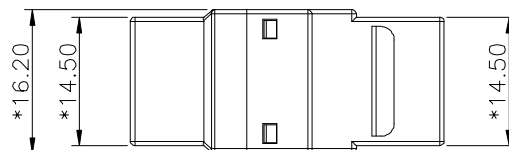
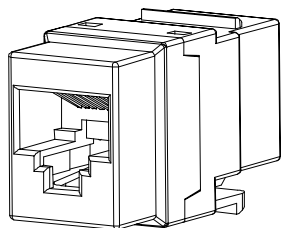
5

6

7

A

A

**ELECTRICAL:**

1. VOLTAGE RATING	: 125 VAC.
2. CURRENT RATING	: 1.5 AMP.
3. CONTACT RESISTANCE	: 100 MILLIOHMS MAX.
4. INSULATION RESISTANCE	: 1000 MEGOHMS MIN. @ 500 VDC.
5. DIELECTRIC STRENGTH	: 750 VAC 60Hz, 1MIN.

B

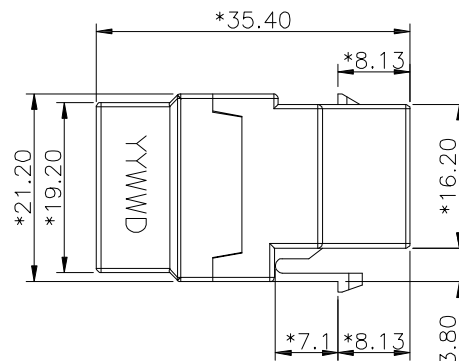
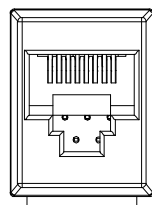
B

**MECHANICAL:**

1. HOUSING MATERIAL	: PC. UL94V-0. BLACK
2. CONTACT MATERIAL	: PHOSPHOR BRONZE T=0.35mm.
3. PLATING	: 50U" GOLD PLATING OVER NICKEL.
4. INSERT MATERIAL	: GLASS FILLED POLYDSTER UL94V-0.
5. PCB MATERIAL	: FR-4 THICKNESS 1.6mm.
③ 6. OPERATING LIFE	: 750 CYCLES MIN.

C

C

**ENVIRONMENTAL:**

1. STORAGE	: -40°C TO +85°C.
2. OPERATION	: 0°C TO +70°C.

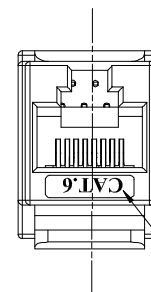
① Conforming to TIA/EIA 568B.2-1

D

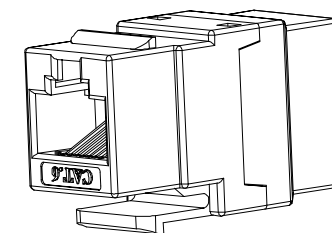
D

E

E



LOGO ABOVE THE SURFACE 0.20mm



F

F

**RoHS compliant**  
Unit: mm



② File No.: E345352

Scale	Free					Date	Name	Customer-No.
TOLERANCE						Drawn	22.09.2014	Joanna
.X	±0.20							
.XX	±0.15	③	Add operating life	12.03.2019	Amy	Approved	12.03.2019	Amy
.XXX	±0.10	②	Add UL	24.03.2017	Amy			
DIM	TOL							
Angle	±5°	①	Add information	16.02.2015	Hellwig			
		①	Drawn	22.09.2014	Joanna			
		Id.	Modification	Date	Name			Drawing-No.
								ASSMANN WSW-No.
								A-TA3535
								ASS 6588 CO rev03
								Replace Sheet

H

H

1

2

3

4

5

6

7

SV3669