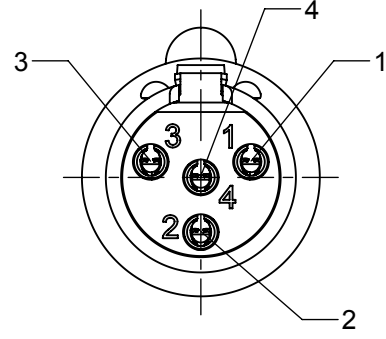
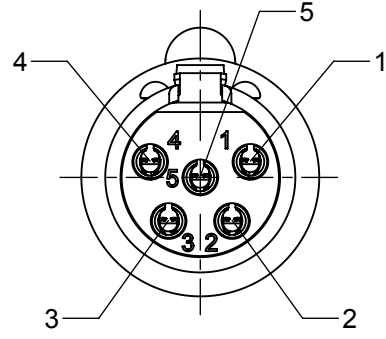


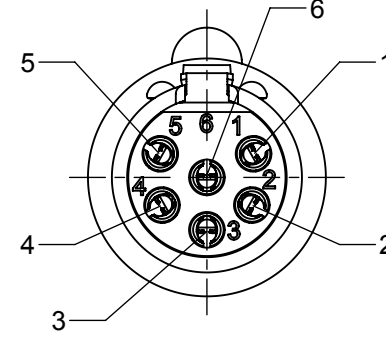
3 PIN



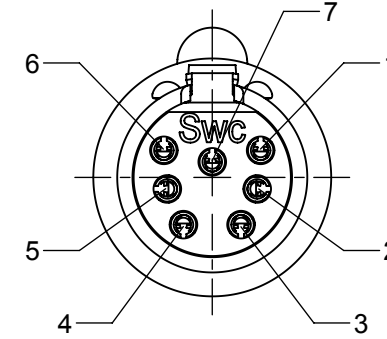
4 PIN



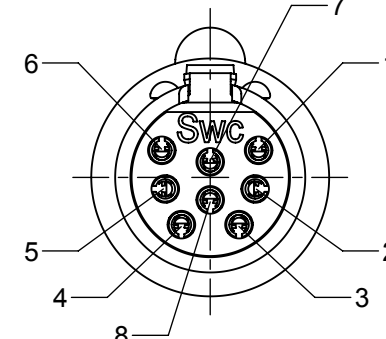
5 PIN



6 PIN

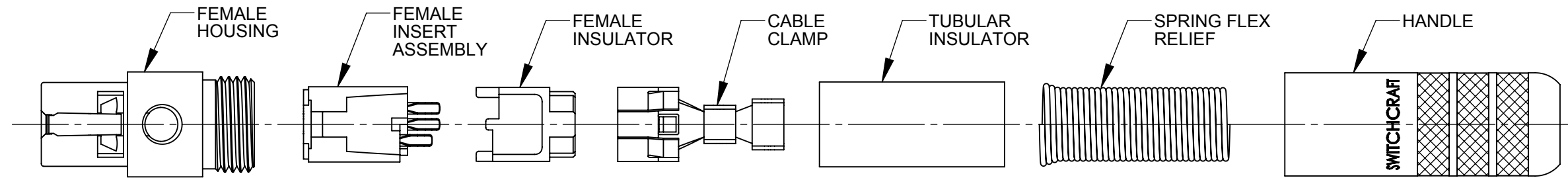


7 PIN



8 PIN

AS VIEWED FROM FRONT MATING VIEW



TA F SH F

TINI QG
CORD PLUG

NUMBER OF CONTACTS

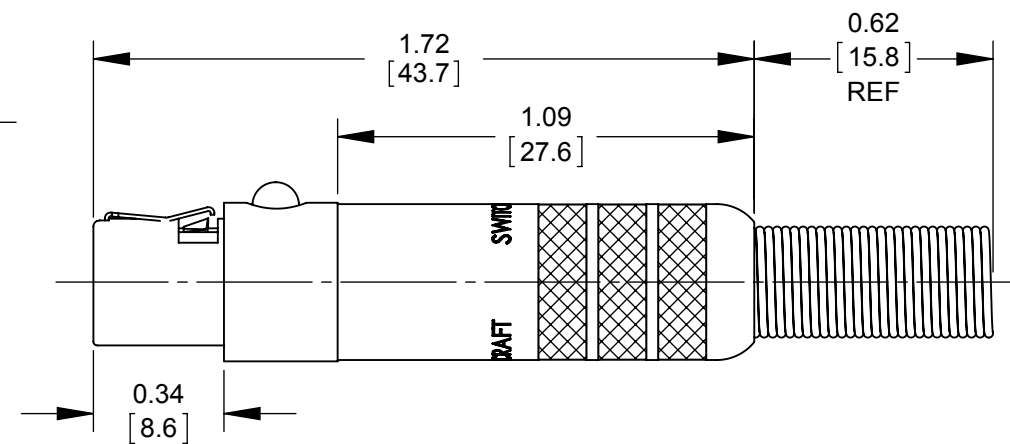
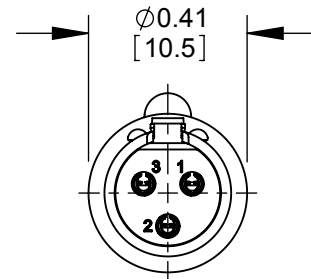
- 3 - 3 CONTACTS
- 4 - 4 CONTACTS
- 5 - 5 CONTACTS
- 6 - 6 CONTACTS
- 7 - 7 CONTACTS
- 8 - 8 CONTACTS

FEMALE

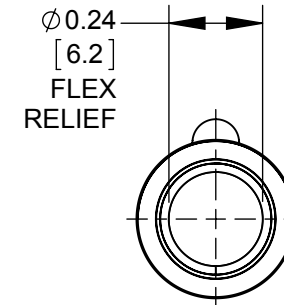
SPRING
FLEX RELIEF

SHIELDED
HANDLE

CONTACT PLATING
BLANK - SILVER (STANDARD)
AU - GOLD



TA3FSHF SHOWN



CUSTOMER DRAWING

NOTES:

1. MATERIALS:
HOUSING - COPPER ALLOY, NICKEL PLATED
LATCH - SPECIAL COPPER ALLOY, NICKEL PLATED
LATCH BUTTON - THERMOPLASTIC, BLACK
CONTACTS - COPPER ALLOY, SILVER OR GOLD PLATED
INSERT - THERMOPLASTIC, BLACK OR DARK BROWN
INSULATOR - THERMOPLASTIC, DARK BROWN
CABLE CLAMP/GROUND TERMINAL - STEEL, ELECTRO-TIN PLATED
TUBULAR INSULATOR - FISH PAPER
HANDLE - COPPER ALLOY, NICKEL PLATED
SPRING FLEX RELIEF - STAINLESS STEEL
2. THIS PRODUCT IS RoHS COMPLIANT.

REV	ECO NUMBER	DATE	BY	APVD
A	27648	01/28/16	PC	TJK
REVISIONS				

UNLESS OTHERWISE SPECIFIED

- 1. ALL DIMENSIONS IN INCHES [mm]
- TWO PLACE DECIMALS ±0.02 [0.5]
- THREE PLACE DECIMALS ±0.005 [0.13]

DO NOT SCALE DRAWING

THIS DRAWING DESCRIBES A DESIGN CONSIDERED PROPRIETARY IN NATURE, DEVELOPED AND MANUFACTURED BY SWITCHCRAFT INC. AND IS RELEASED ON A CONFIDENTIAL BASIS FOR IDENTIFICATION PURPOSES ONLY.

SIZE	WIDTH	MULT	LBS/M	TEMPER
FINISH		MATERIAL		
SPEC No.		SPEC No.		
FIRST USED ON		SCALE		
		2:1		
DATE DRAWN	BY	CHKD	APVD	
07/15/09	BS	TJK	TJK	
		02/03/16	02/03/16	
NAME FEMALE TINI QG SHIELDED W/ FLEX RELIEF, RoHS			PART No.	
			TA_FSHF SERIES	
				REV
				A

