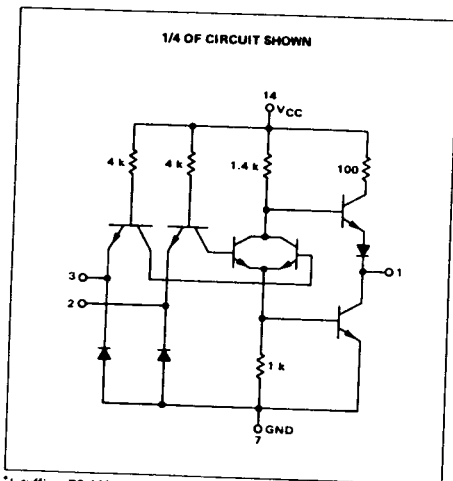


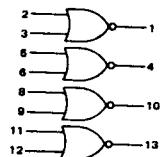
QUAD 2-INPUT "NOR" GATE

MTTL MC7400P series  
MTTL MC5400L/7400L series

MC5402L\*  
MC7402P,L\*



This device consists of four 2-input NOR gates. Each gate may be used as an inverter, or two gates may be cross-coupled to form bistable circuits.



Positive Logic:  $1 = \overline{2 \cdot 3}$   
Negative Logic:  $1 = \overline{2 \cdot 3}$

Input Loading Factor = 1  
Output Loading Factor = 10

Total Power Dissipation = 48 mW typ/pkg  
Propagation Delay Time = 13 ns typ

\*L suffix = TO-116 ceramic package (Case 632)  
P suffix = TO-116 plastic package (Case 606)  
See General Information section for package outline dimensions.

VOLTAGE WAVEFORMS AND DEFINITIONS

SWITCHING TIME TEST CIRCUIT

