

DRAWING MADE IN THIRD ANGLE PROJECTION

3

2

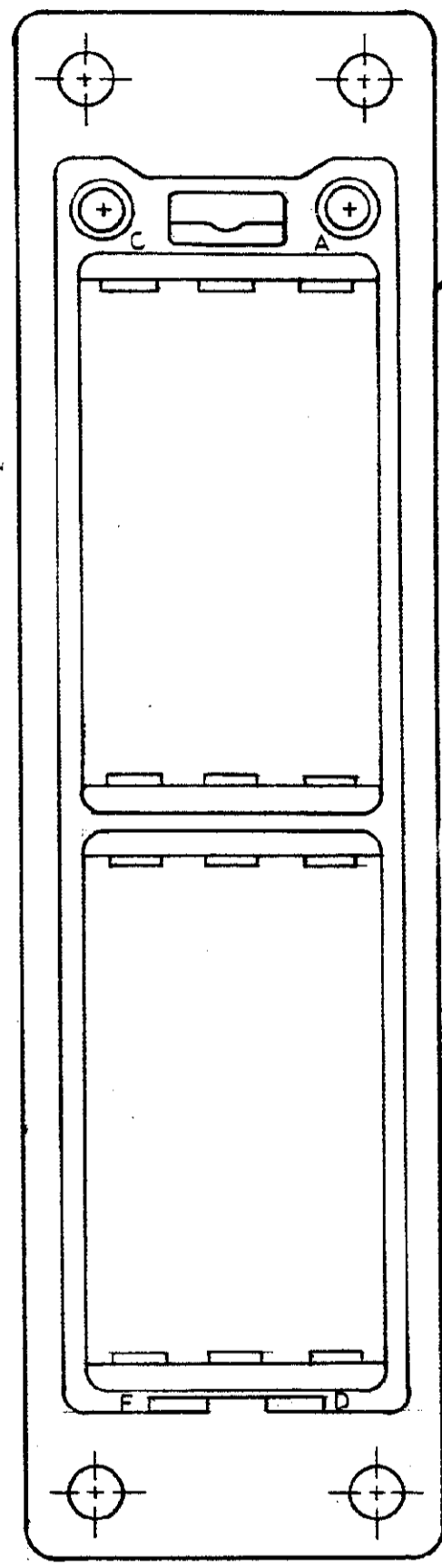
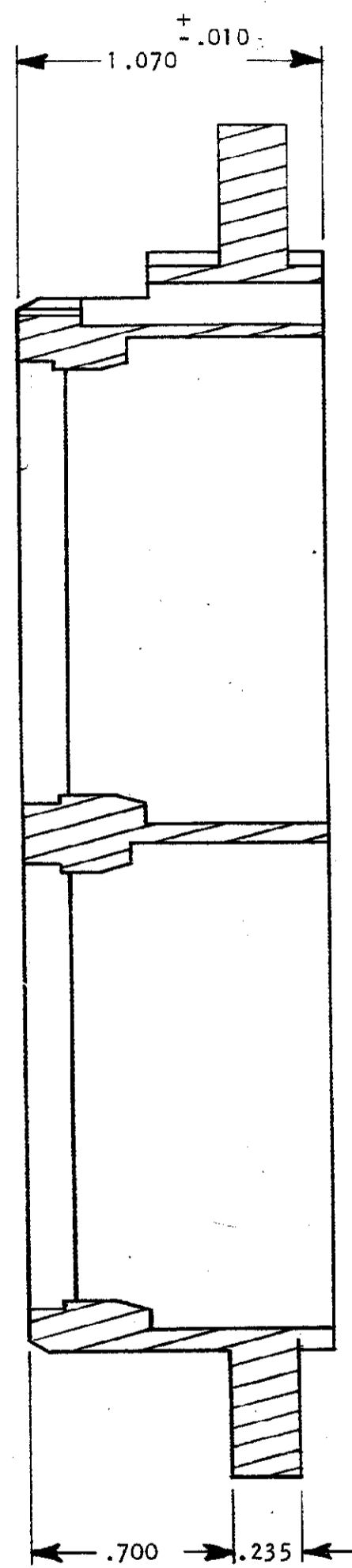
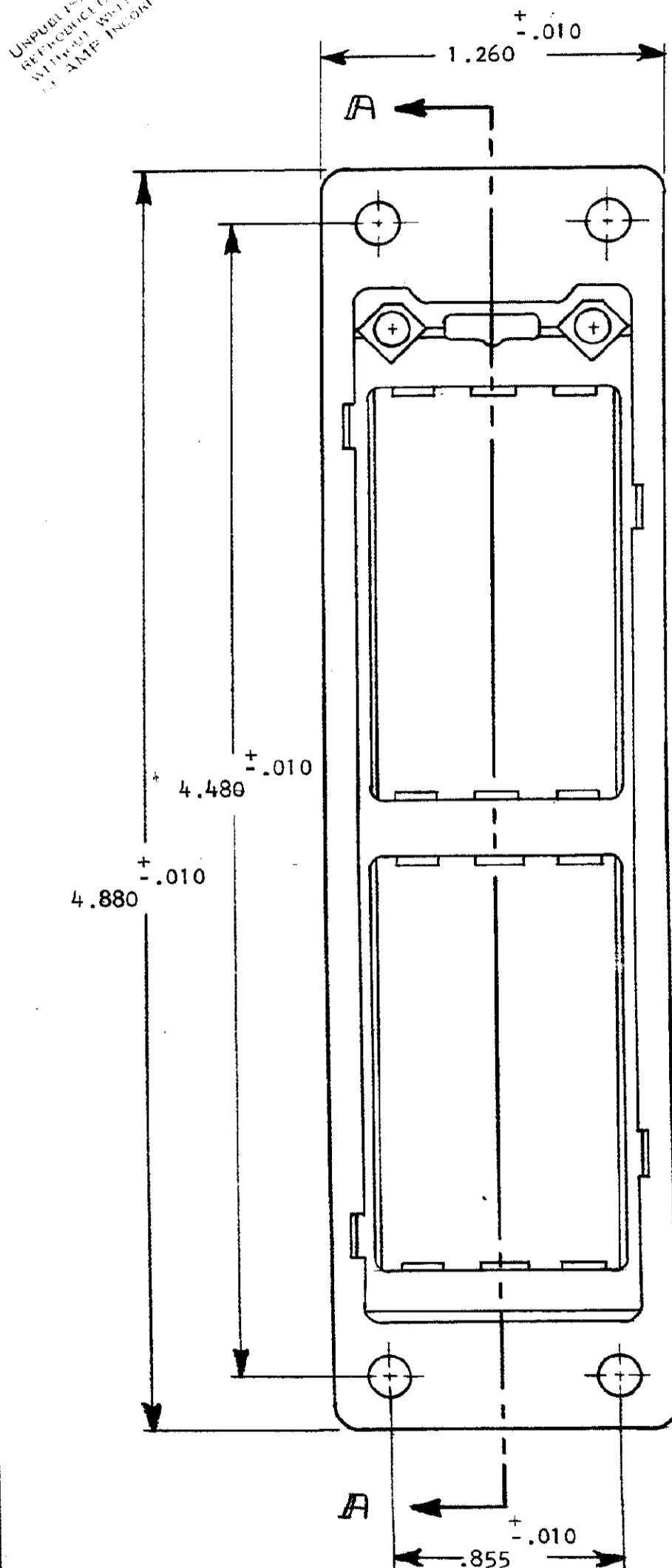
1

LOC R 01ST 39

© COPYRIGHT 1974 BY AMP INCORPORATED, HARRISBURG, PA. ALL INTERNATIONAL RIGHTS RESERVED. AMP INCORPORATED PRODUCTS COVERED BY U.S. AND FOREIGN PATENTS AND/OR PATENTS PENDING.

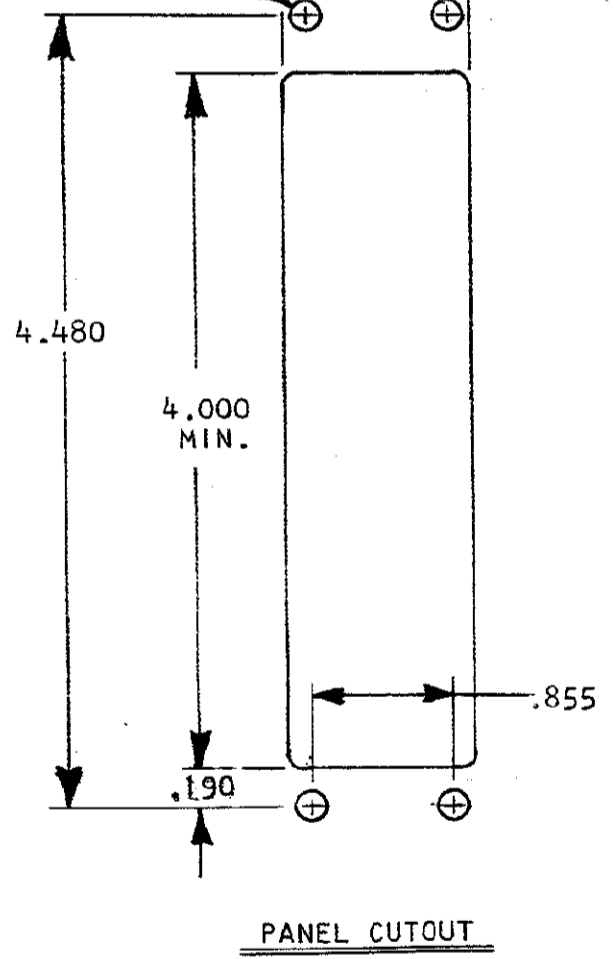
206742-1 1. AS SHOWN.

REVISIONS					
P	F	ZONE	DESCRIPTION	DATE	APPROVED
		O	RELEASED	D.S. 7-17-74	DR
		A	REV. PER ECN D-132	2/27/74	DR
		A1	REV. PER ECN D-306	D.S. 10-30-74	DR
		B	REMOVED "B" D-585	3/2/75	DR



RECEPTACLE HOUSING
MAT'L.- GLASS REINFORCED
THERMOPLASTIC,
COLOR: BLACK

.187 DIA. HOLE, (4) PLACES
1.130 MIN.



SECTION
A-A

UNLESS OTHERWISE SPECIFIED DIMENSIONS ARE IN INCHES. TOLERANCES ON: DECIMALS ±.005 ANGLES ±.01	CONTRACT NO DR <i>D.S. 7-16-74</i>		AMP INCORPORATED Harrisburg, Pa.	
	MATERIAL SEE CALL OUT			
FINISH <i>///</i>	APPD <i>DR 7/18/74</i>		SIZE CODE IDENT NO DRAWING NO C 00779 206742	
	OTHER APPD		SCALE <i>///</i> "CR" SERIES SHEET 1 OF 1	

CUST. # 206742

CUSTOMER DRAWING