



LED EBPN14-40W103sw-2



Class: LED Panel 1 ft. x 4 ft. Class

Product Description

LED EBPN14-40W103sw-2 thoughtfully designed for superior illumination, ultimate efficiency, and easy installation, this 1x4 LED panel offers a larger driver for more space when wiring and a sturdy concave-convex backplate for no light leakage. Double-sided welding provides a seamless, polished frame and PMMA material guarantees perfect light output without the risk of yellowing. This troffer provides three wattage options, 25W/30W/40W on each unit, for a lumen output of either 3125lm/3750lm/5000lm, and offers three color temperature options: Soft White (3500K), Bright White (4000K), and Cool White (5000K).



Estimated Energy Cost: \$3.01 per year
\$3.61 per year
\$4.81 per year



Available only as a twin-pack.
(EBPN14-40W103sw-2 contains 2 LED Panels.)

*Note: Design, features and specifications subject to change without notice. Some features may not be available on all models. For more information please visit: www.eurilighting.com or call 1-310-787-1100

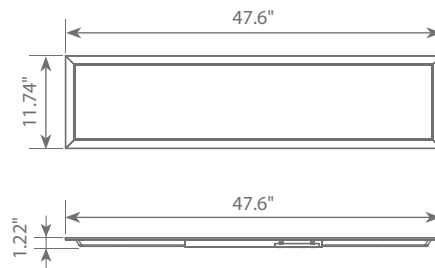
Specifications

Input Power	Input Voltage	Lumen Output	Beam Angle	Center Beam	CCT
25/30/40 W	AC120-277V	3125/3750/5000 lm	110°	N/A	3500/4000/5000 K
CRI	Luminous Efficacy	Power Factor	Input Current	Base/Cap	Lamp Lifespan
80	125 lm/W	0.9	1 A	N/A	50,000 Hrs.

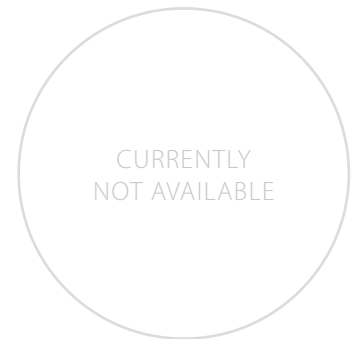
Product Features

- Dimmable
- 3 CCT Selectable
- Easy and fast installation
- Damp Rated

Product Dimensions



Product Photometric Data



Euri Lighting | A Division of ITRONIX Inc.

20900 Normandie Avenue Bldg. B, Torrance, CA 90502 | Tel: 310.787.1100 | Fax: 310.787.1166 | www.eurilighting.com
©2020 Euri Lighting. All Rights Reserved