

# Customer Information Sheet

DRAWING No.: S1731-XX

SHEET 2 OF 2

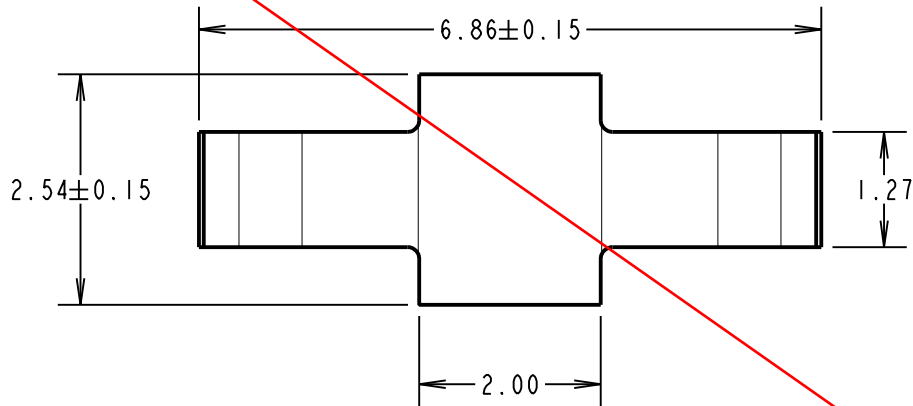
IF IN DOUBT - ASK

©

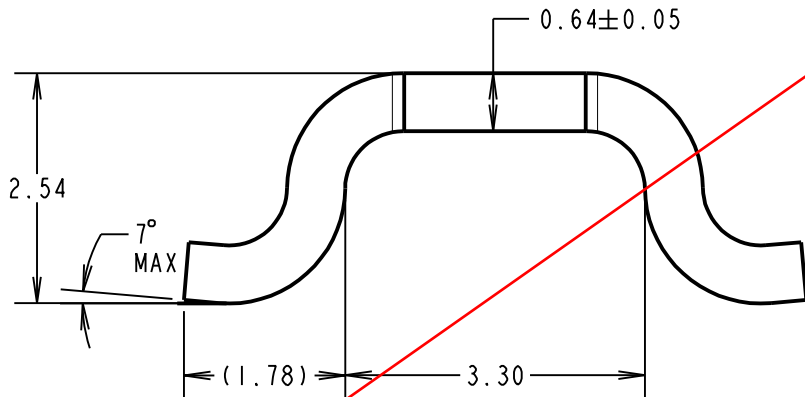
NOT TO SCALE

THIRD ANGLE PROJECTION

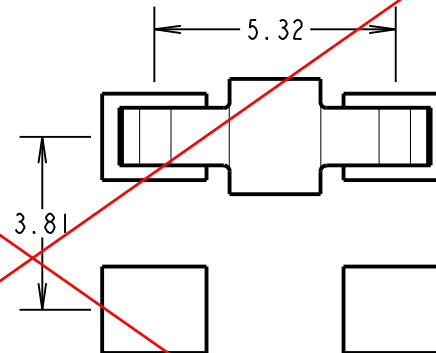
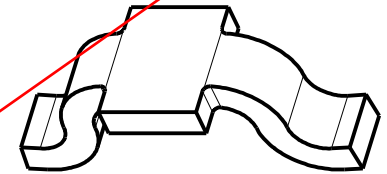
ALL DIMENSIONS IN mm



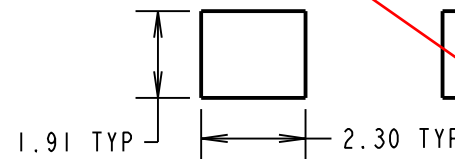
**OBSOLETE**



COMPONENT SPECIFICATION:  
 MATERIAL = CW004A ETP COPPER  
 FINISH:  
 06 = 3 $\mu$  90/10 TIN/LEAD  
 46 = 3 $\mu$  100% TIN OVER NICKEL  
 ELECTRICAL:  
 CURRENT RATING = 10A (30°C TEMP RISE)  
 CONTACT RESISTANCE = 20m $\Omega$  MAX  
 ENVIRONMENTAL:  
 OPERATING TEMPERATURE = -40°C TO +125°C



RECOMMENDED PAD LAYOUT



ORDER CODE:  
**S1731-XX**  
 FINISH:  
 06 - 3 $\mu$  90/10 TIN LEAD OVER NICKEL  
 46 - 3 $\mu$  100% TIN OVER NICKEL

MSP	5	16.10.15	13113
NAME	ISS.	DATE	C/NOTE
APPROVED:		M.PERREN	
CHECKED:		S.BENNETT	
DRAWN:		R.ADDE	
CUSTOMER REF.:			
ASSEMBLY DRG.:			

1. FOR TAPE AND REELED COMPONENT, SEE DRAWING S173-XXR.
2. PACKING: 100 COMPONENTS PER BAG.

**HARWIN**

www.harwin.com  
 technical@harwin.com

THIS DRAWING AND ANY INFORMATION OR DESCRIPTIVE MATTER SET OUT HEREON ARE CONFIDENTIAL AND COPYRIGHT PROPERTY OF THE HARWIN GROUP AND MUST NOT BE DISCLOSED, LOANED, COPIED OR USED FOR MANUFACTURING, TENDERING OR FOR ANY OTHER PURPOSE WITHOUT THEIR WRITTEN PERMISSION.

TOLERANCES  
 X. =  $\pm 1$ mm  
 X.X =  $\pm 0.50$ mm  
 X.XX =  $\pm 0.10$ mm  
 X.XXX =  $\pm 0.01$ mm  
 ANGLES =  $\pm 5^\circ$   
 UNLESS STATED

MATERIAL:  
 SEE ABOVE  
 FINISH: SEE ABOVE  
 S/AREA: mm<sup>2</sup>

TITLE:  
 POWER SMT JUMPER LINK (LOOSE)  
 DRAWING NUMBER:  
**S1731-XX**

SHT  
 2 OF 2