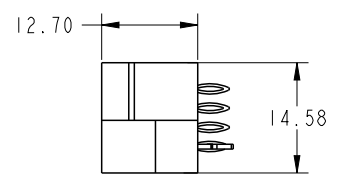
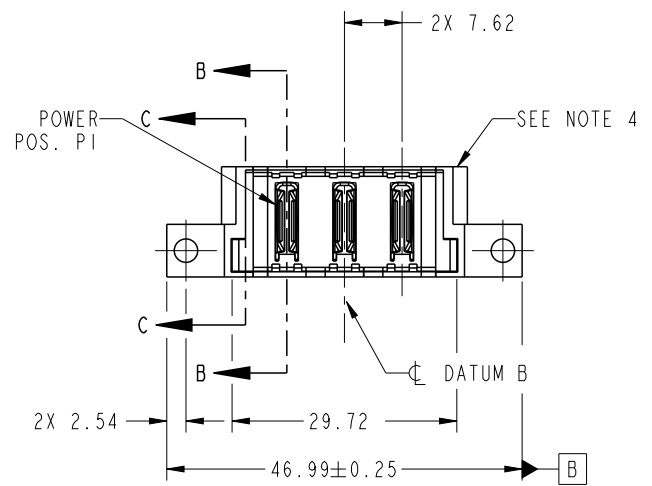
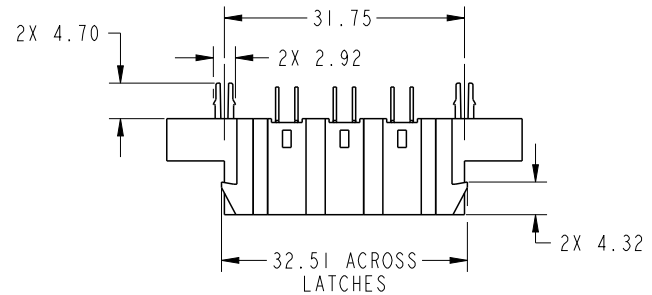
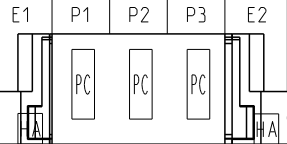


PRODUCT NO.

51963-036--  
NOTE ③

POWER



CODE	DIM "M" MATING LENGTH	CONTACT TYPE
PC	[N/A]	POWER
HA	[N/A]	HOLD-DOWN

spec ref	SEE NOTES	dr	Julia Wang	2009/02/24	projection 	MM ←→	size	A4	scale	1:1
tolerance std	TOLERANCES UNLESS OTHERWISE SPECIFIED	eng	Luo Weller	2013/05/07			ecn no	-		
SEE NOTES		chr	-	-			rel level	Released		
surface	linear	0.X	±0.50	 title 3ACP VERTICAL PRESS-FIT HEADER cat. no. &model_name www.fci.com	product family	PwrBlade	dwg no	51963-036	rev	A
		0.XX	±0.25							
		0.XXX	±0.10							
SEE BOTES	angular	0°	±2°	Product - Customer Drw			sheet 1 of 4			

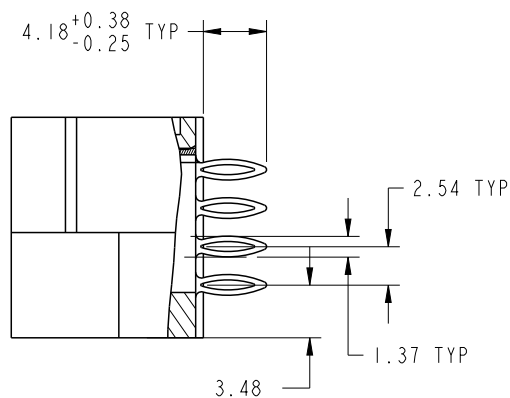


Copyright FCI.

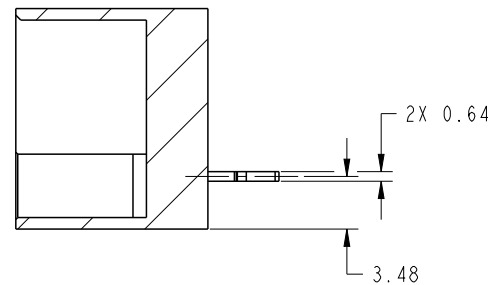
PrdE File - REV C - 2009-06-09

PRODUCT NUMBER

51963-036\_\_  
NOTE 3



SECTION B-B  
SCALE 2:1



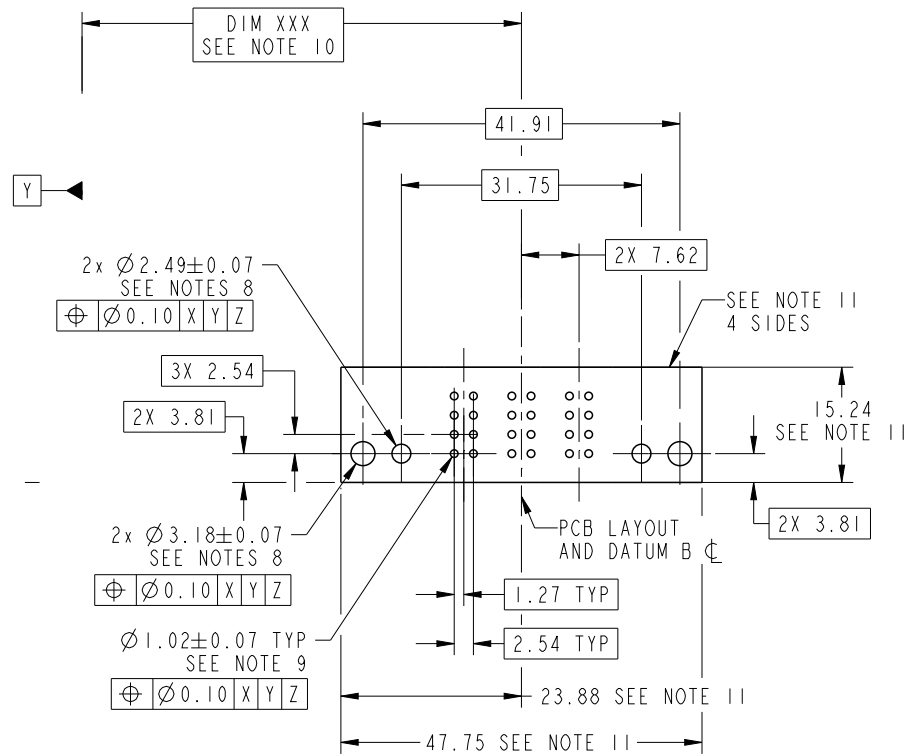
SECTION C-C  
SCALE 2:1



Copyright FCI.

spec ref		SEE NOTES		dr	Julia Wang	2009/02/24	projection 	MM ←→	size	A4	scale	1:1	
tolerance std		TOLERANCES UNLESS OTHERWISE SPECIFIED		eng	Luo Weller	2013/05/07			ecn no	-			
SEE NOTES				chr	-	-							
surface ✓		linear	0.X	±0.50	FCI www.fci.com	title 3ACP VERTICAL PRESS-FIT HEADER	product family	PwrBlade	rel level	Released			
SEE BOTES			0.XX	±0.25						cat. no.	&model_name	Product - Customer Drw	sheet 2 of 4
		angular	0°	±2°									

PRODUCT NUMBER  
51963-036\_\_  
NOTE 3



RECOMMENDED PCB LAYOUT

spec ref	SEE NOTES			dr	Julia Wang	2009/02/24	projection	MM	size	A4	scale	1:1	
tolerance std	TOLERANCES UNLESS OTHERWISE SPECIFIED			eng	Luo Weller	2013/05/07			← →	ecn no	-		
SEE NOTES				chr	-	-		product family		PwrBlade	rel level	Released	
surface	linear	0.X	±0.50		www.fci.com	title	3ACP		dwg no	51963-036		rev	A
SEE BOTES		0.XX	±0.25				VERTICAL PRESS-FIT HEADER						
	0.XXX	±0.10	cat. no.				&model_name	Product - Customer Drw		sheet 3 of 4			
	angular	0°	±2°										

PRODUCT NUMBER

51963-036\_\_  
NOTE 3

NOTES:

1. DIMENSIONS AND TOLERANCES ARE IN ACCORDANCE WITH ASME Y14.5M, 1994 UNLESS OTHERWISE SPECIFIED.

CONNECTOR NOTES:

- ② HOUSING MATERIAL: UL 94 V-0 GLASS FILLED HIGH-TEMP THERMOPLASTIC  
POWER CONTACT MATERIAL: COPPER ALLOY  
SIGNAL PIN MATERIAL: COPPER ALLOY
- 3. PLATING:  
SEE ITEM 3 & 4 IN PRINT 10068143 FOR PLATING SPEC. OF 51963-036 ,51963-036LF RESPECTIVELY.

④ MANUFACTURER'S NAME, DATE CODE AND OPTIONAL P/N TO APPEAR ON THIS SURFACE.  
THE P/N CAN BE OMITTED IF THERE IS NOT ENOUGH SPACE ON THIS SURFACE.

5. PRODUCT SPECIFICATION GS-12-149.  
APPLICATION SPECIFICATION BUS-20-067.

6. PACKAGED IN TRAYS.

PCB NOTES:

- 7. ALL HOLE DIAMETERS ARE FINISHED HOLE SIZE.
- 8. MOUNTING HOLES, WHERE APPLICABLE, ARE UNPLATED.

⑨  $\varnothing 1.151 \pm 0.025$  DRILLED HOLES PLATED WITH  
0.008 MIN SnPb OVER .001 [0.03]  
TO 0.08 Cu PLATING TO ACHIEVE  
 $\varnothing 1.02 \pm .07$  HOLE.

⑩ "DIM XXX" TO BE DETERMINED BY THE CUSTOMER.

⑪ CONNECTOR KEEP-OUT ZONE.

12. CUSTOMER SUPPLIES (2) #4-40 UNC SCREW,  
HARDWARE TO MOUNT HEADER TO PC BOARD.

13. FOR PRESS FIT APPLICATION USE FCI CAM TOOL 430169-XXX.

spec ref		SEE NOTES		dr	Julia Wang	2009/02/24	projection 	MM 	size	A4	scale	1:1	
tolerance std		TOLERANCES UNLESS OTHERWISE SPECIFIED		eng	Luo Weller	2013/05/07			ecn no	-			
SEE NOTES				chr	-	-			product family	PwrBlade		rel level	Released
surface	linear	0.X	$\pm 0.50$	FCI	title	3ACP VERTICAL PRESS-FIT HEADER		dwg no	51963-036		rev	A	
		0.XX	$\pm 0.25$										
		0.XXX	$\pm 0.10$										
SEE BOTES	angular	0°	$\pm 2^\circ$	www.fci.com	cat. no.	&model_name	Product - Customer Drw		sheet 4 of 4				



Copyright FCI.