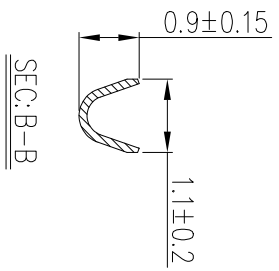
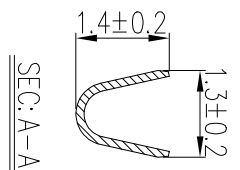
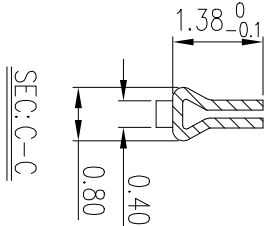
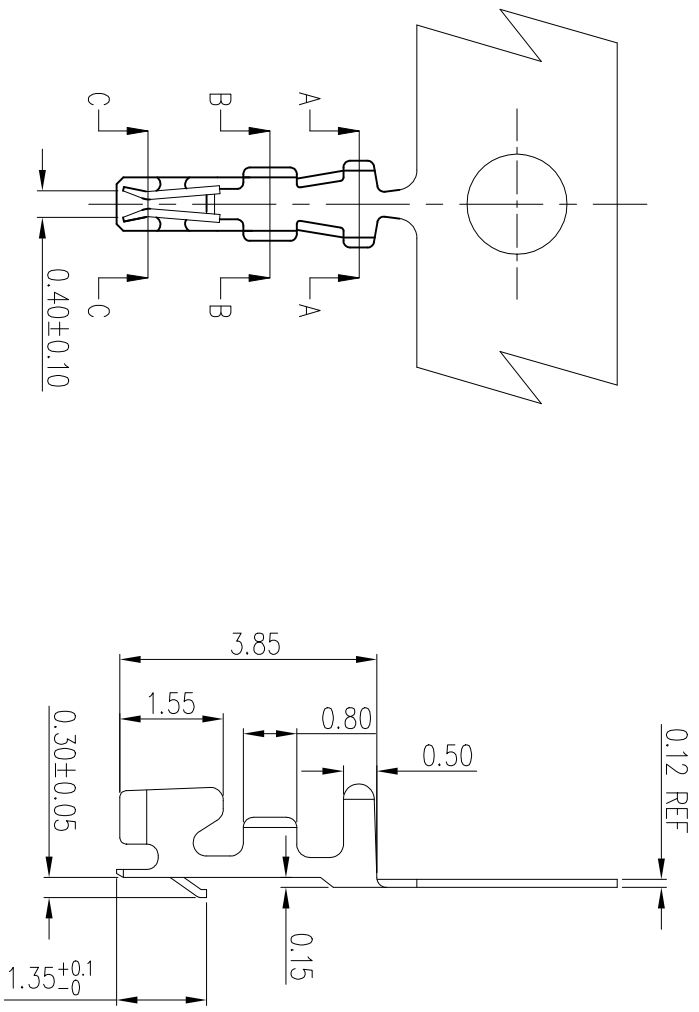


form: A3-2016-02-24



- NOTES:
1. MATERIAL: 0.12mm THICK PHOSPHOR BRONZE.
 2. PLATED: TIN/GOLD PLATING.
 3. APPLICABLE WIRES: AWG#28~AWG#32,
 4. INSULATOR O.D.: 0.40~0.80mm.
 5. RoHS COMPLIANT.
 6. PRODUCT SPEC: GS-12-1465
 7. PACKAGING SPEC: GS-14-2613
 8. USE WITH AFCI HOUSING 10147603
 9. BILL OF PART NO:
10147604 - 0 X LF

LEAD FREE
PLATING
1: PRE-BRIGHT TIN PLATED
2: 30U" GOLD
3: GOLD FLASH

mat'l. code	surfact	tolerance	projection	product family
ISO 1302	ISO 406	ISO 1101	1101	Mintek
tolerances unless otherwise specified	tolerances unless otherwise specified	tolerances unless otherwise specified	tolerances unless otherwise specified	
angles	infeed	mm	mm	
0±x°	.00±.20	scale 1:1		
dr TONY LENG 2018-04-13	engr Jason Wang 2020-3-20	chr -	qppd TIM YAO 2020-3-20	dwg no 10147604
sheet revision B	sheet 1	type Product Customer Drawing	sheet 1 of 1	size A3
index				

1.0mm Crimp Contact