

5

4

3

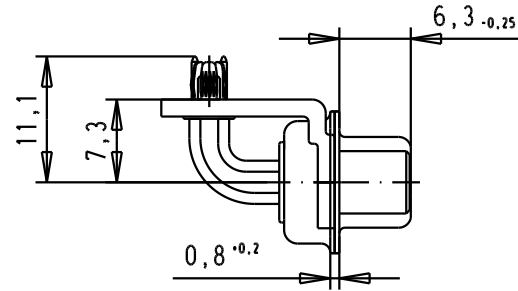
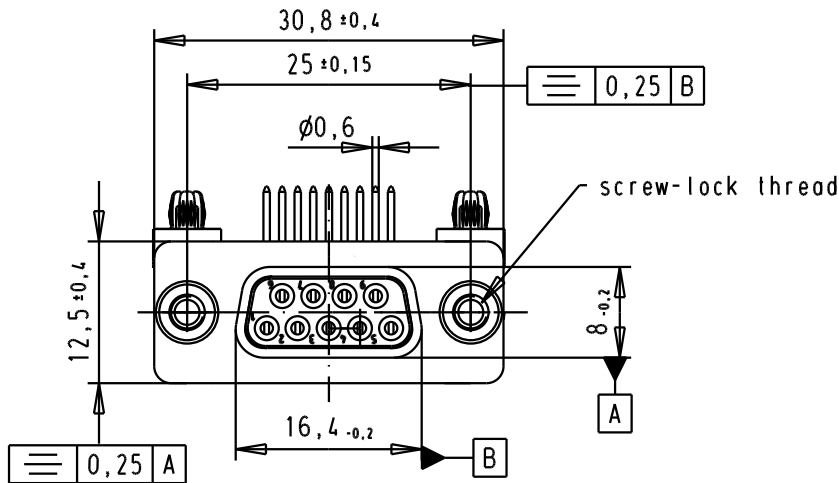
2

1

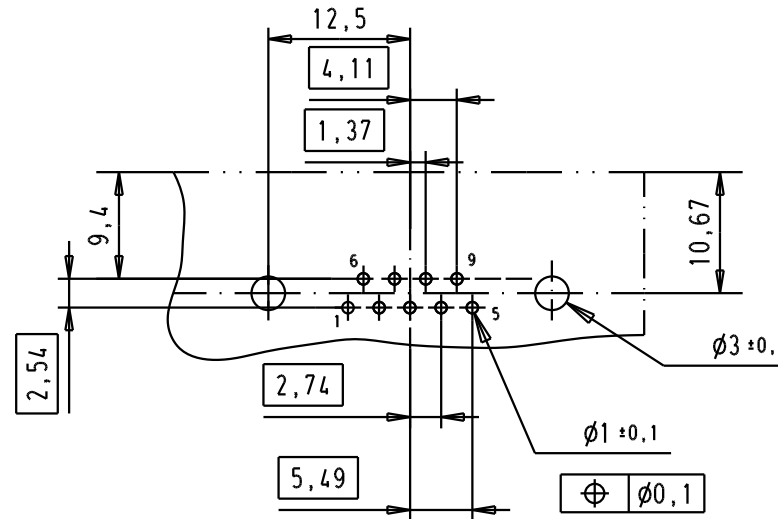
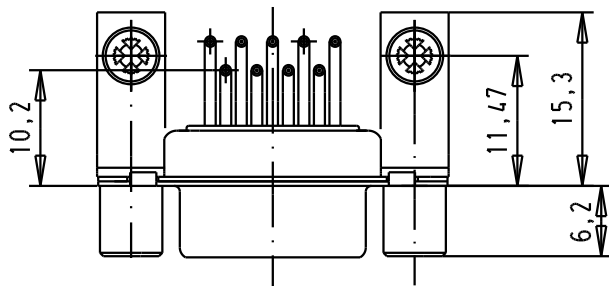
SPECIFICATION

|                       |            |
|-----------------------|------------|
| Mating Cycles         | 500        |
| Filter type           | C          |
| Capacitance           | 1000pf±20% |
| Working Voltage       | 100v       |
| Current Rating        | 7.5A       |
| Insulation Resistance | >1GΩ       |

| FREQUENCY (MHz) | ATTENUATION (dB) |
|-----------------|------------------|
| 5               | 1dB              |
| 10              | 3dB              |
| 50              | 12dB             |
| 100             | 20dB             |
| 500             | 34dB             |
| 1000            | 30dB             |



PCB Layout, Component side, thickness 1.6 mm



D

C

B

A

|             |                   |       |          |      |
|-------------|-------------------|-------|----------|------|
| 09641147235 | M3                | 33231 | 07/10/05 | JMDR |
| 09641147234 | UNC 4-40          | 31058 | 8-JUL-02 | CV   |
| Part number | screw-lock thread | Mod.  | Dat.     | Name |

|         |          |    |
|---------|----------|----|
| Detail. | 8-JUL-02 | CV |
| Insp.   |          |    |
| Stand.  |          |    |

All Dim. in mm  
Orig. Size DIN A 4

HARTING EURL  
F-95972 Paris

D-Sub, female, angled,  
9 Poles, solder pins, tin  
plated shell with brackets,  
screw-locks and board-locks

TB 0964114723x

Sub.

Mo?MsLab/  
Scale  
1.5:1

Blatt/ Page  
2 / 4