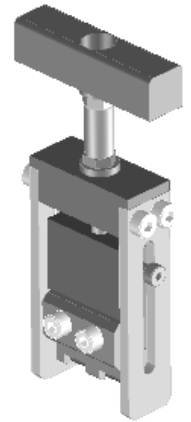




## Ten50Power™ Receptacle Power Terminal Removal Tool Instruction Sheet Order No. 62100-6600



### FEATURES

- Removes two positions (four terminals) per tool cycle.
- Use tool 62100-6400 for removing the plug or receptacle housing.
- Use tool 62100-6500 for removing the plug terminals.

### SCOPE

Products: Ten50Power™ 2 row Mezzanine Receptacle Assembly (76541 series). See Product List below for specific order numbers.

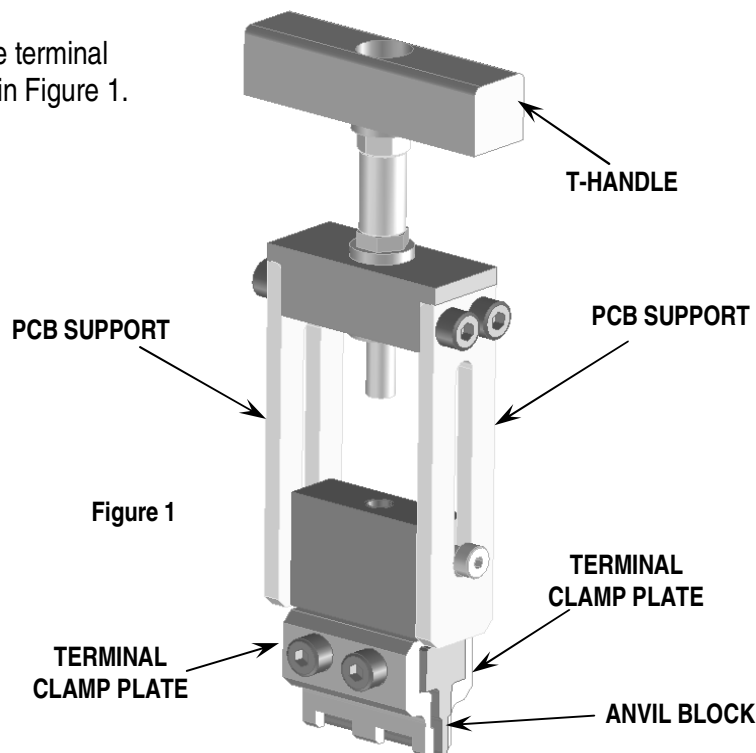
### Product List

The following is a partial list of the product order numbers and their specifications that this tool is designed to run. Updates to this list are available on [www.molex.com](http://www.molex.com).

Connector Order Number	Description
76541-0002	Ten50Power™ 2 row Mezzanine Receptacle Assembly

### Tool Setup

The principal parts of the terminal removal tool are shown in Figure 1.



## Tool Operation

1. Remove the receptacle housing using Molex tool 62100-6400. The terminals will be exposed as shown in Figure 2.

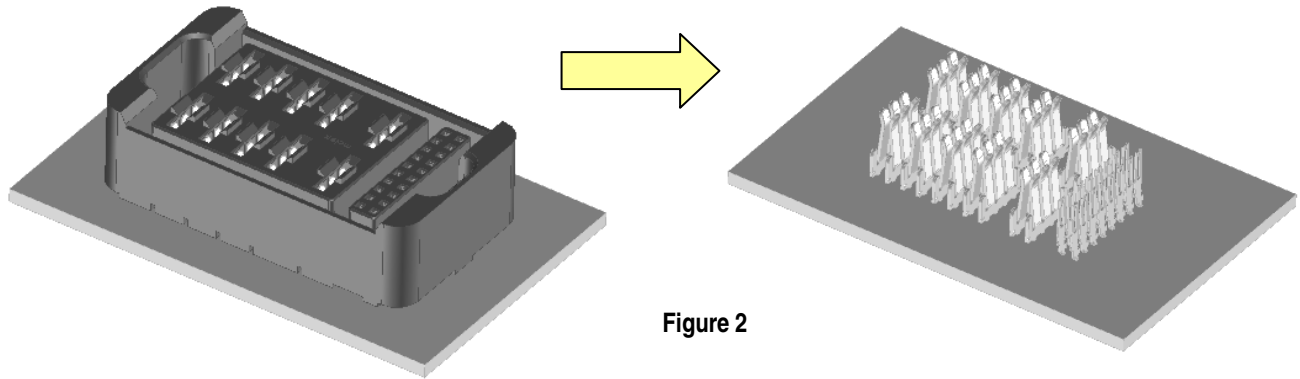


Figure 2

2. Turn the T-handle counterclockwise (CCW) until the clamp plates and anvil block are fully down. See Figure 1. **NOTE:** The threaded shaft will disengage from the anvil block.
3. Using a 3mm hex wrench, loosen the two screws holding each clamp plate 1-1/2 turns. **NOTE:** If the screws are not loosened, the tool will not fit over the power terminals.
4. Move the clamp plates away from the anvil.
5. Position the tool over a row of terminals.
6. Working from the top, move the anvil block and clamp plates down over the power terminals until the clamp plates rest on the shoulder of the terminal. See Figure 3.

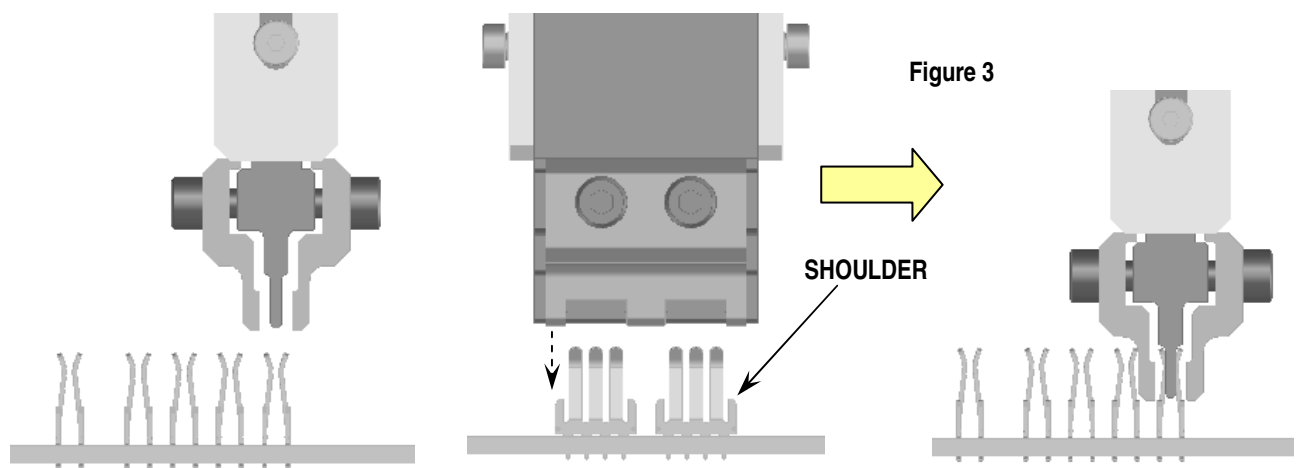


Figure 3

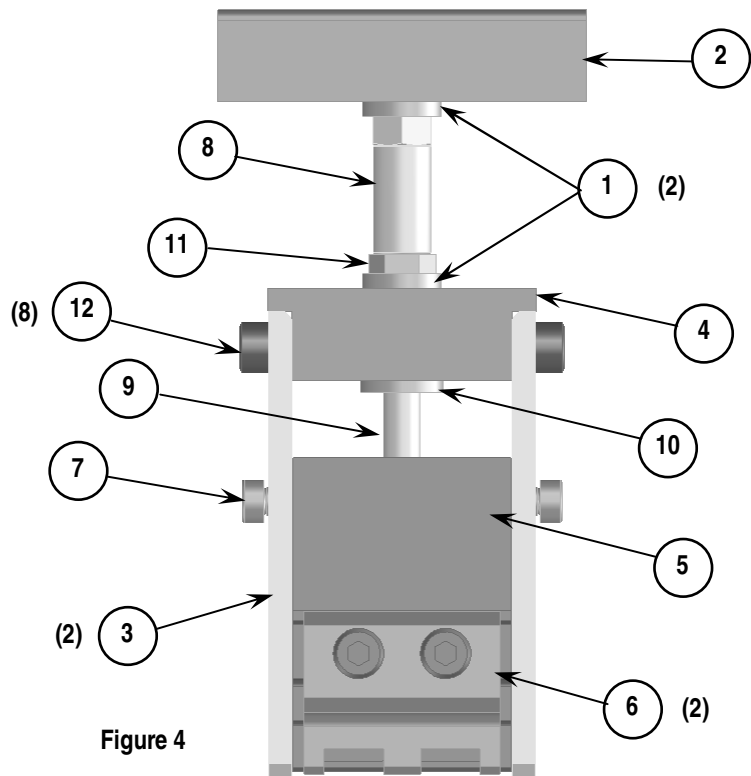
7. Tighten the screws holding the terminal clamp plates.
8. Turn the T-handle clockwise (CW) until the threaded shaft engages the anvil block.
9. Continue turning the T-handle; the PCB supports will contact the PCB then the terminals will be pulled up.
10. When the terminals are free from the PCB, pull the tool straight up and away from the PCB.
11. Loosen the clamp plate screws and take the terminals out of the tool.
12. After terminals are removed, they cannot be reused and should be discarded or recycled.

### Parts List

Item	Order No	Description	Quantity
	<b>62100-6600</b>	<b>Power Terminal Removal Tool for Ten50™ Receptacle</b>	<b>Figure 4</b>
1	N/A	5mm Flat Washer	2**
2	62100-6204	T Handle	1
3	62100-6508	Side Plate Guide	2
4	62100-6601	Spacer Plate	1
5	62100-6603	Anvil Block	1
6	62100-6606	Terminal Clamp Plate	2
7	63600-1937	Shoulder Screw	2
8	63600-1959	Collar	1
9	63600-1960	Stop Screw	1
10	63700-4512	Retaining Washer	1
11	N/A	M5 Hex Jam Nut	1**
12	N/A	M4 by 8mm long SHCS	8**

\*\* Available from an industrial supply company such as MSC (1-800-645-7270).

### Assembly Drawing



### Contact Information

For more information on Molex application tooling please contact Molex at 1-800-786-6539.

**Americas Headquarters**  
 Lisle, Illinois 60532 U.S.A.  
 1-800-78MOLEX  
 amerinfo@molex.com

**Far East North Headquarters**  
 Yamato, Kanagawa, Japan  
 81-462-65-2324  
 feninfo@molex.com

**Far East South Headquarters**  
 Jurong, Singapore  
 65-6-268-6868  
 fesinfo@molex.com

**European Headquarters**  
 Munich, Germany  
 49-89-413092-0  
 eurinfo@molex.com

**Corporate Headquarters**  
 2222 Wellington Ct.  
 Lisle, IL 60532 U.S.A.  
 630-969-4550  
 Fax: 630-969-1352

Visit our Web site at <http://www.molex.com>