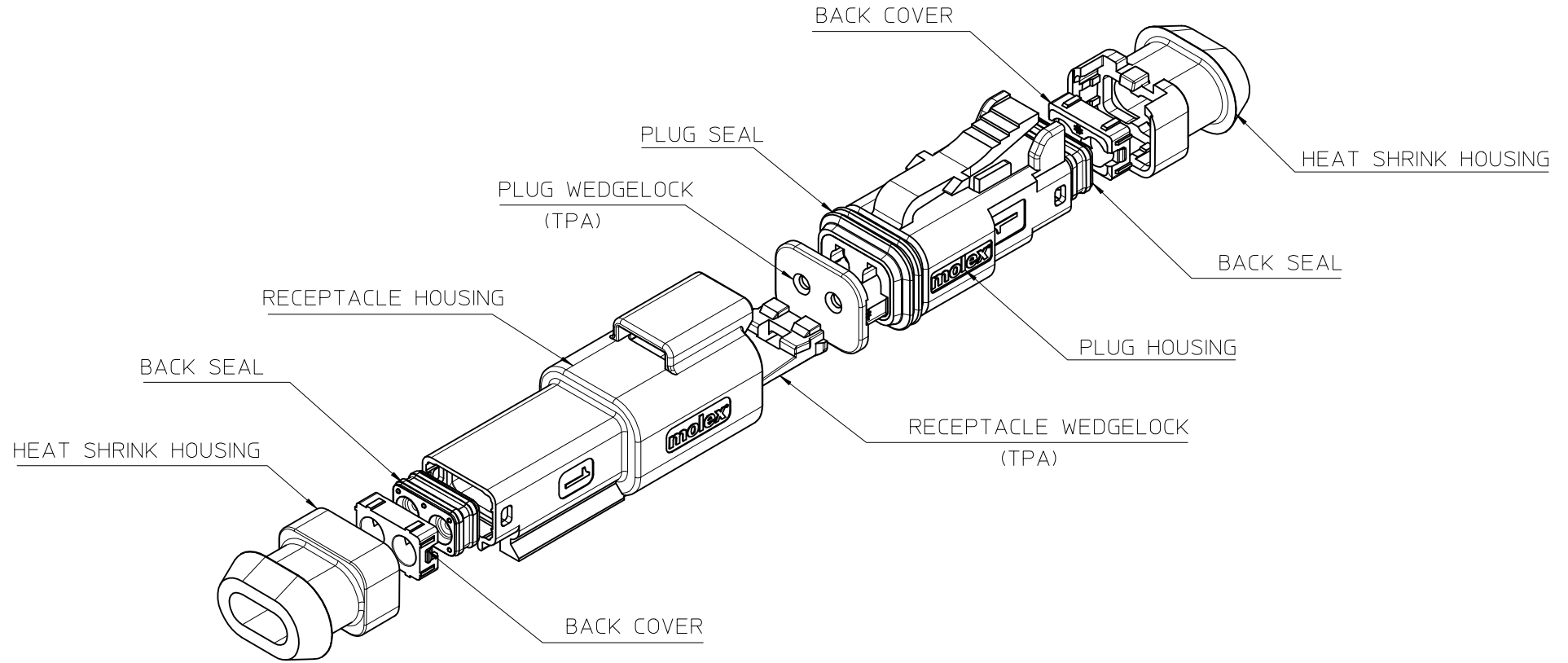


EM-93444-0010



NOTES

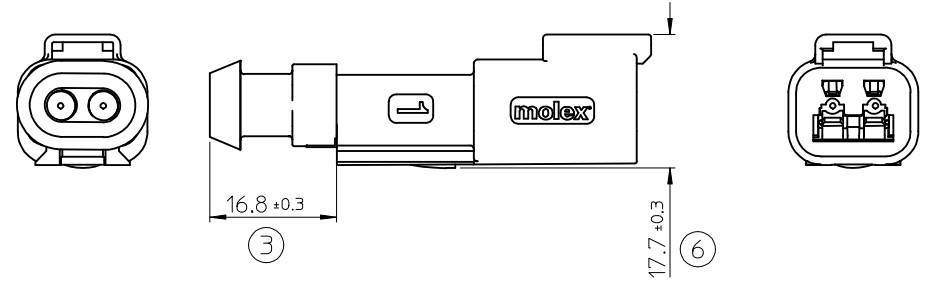
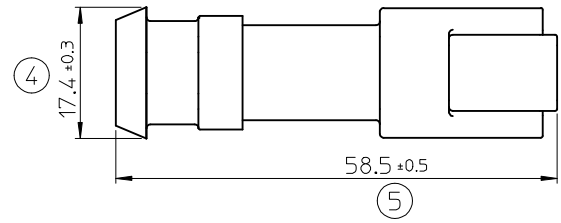
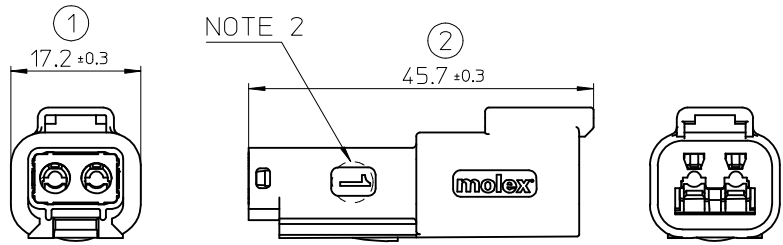
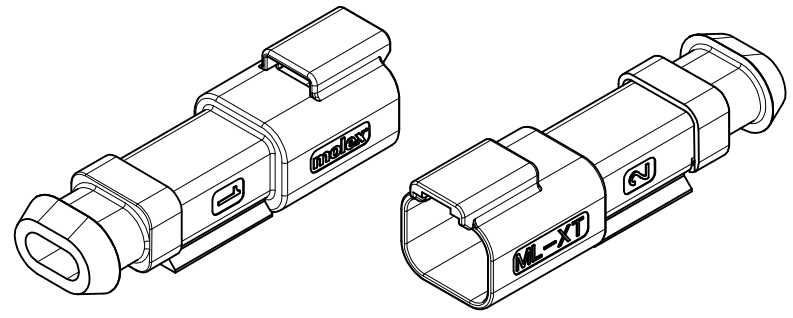
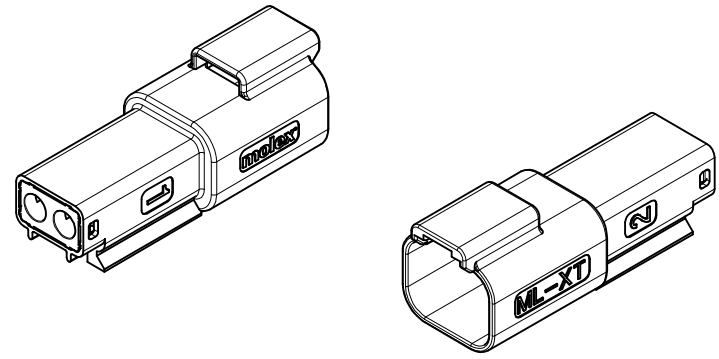
1. SEE SHEETS 2 TO 7 FOR UNSPECIFIED NOTES, DIMENSIONS AND PART NUMBERS

| PROPOSAL EC NO: IPG2015-1216 DRWN: JFLETCHER 2015/01/06 CHKD: APPR: JWALLACE 2015/01/12 REV 0 | DESCRIPTION QUALITY SYMBOLS $\nabla=0$ $\nabla C=0$ | GENERAL TOLERANCES (UNLESS SPECIFIED) <table border="1"> <thead> <tr> <th></th> <th>mm</th> <th>INCH</th> </tr> </thead> <tbody> <tr> <td>4 PLACES</td> <td>± ---</td> <td>± ---</td> </tr> <tr> <td>3 PLACES</td> <td>± ---</td> <td>± ---</td> </tr> <tr> <td>2 PLACES</td> <td>± 0.10</td> <td>± ---</td> </tr> <tr> <td>1 PLACE</td> <td>± 0.20</td> <td>± ---</td> </tr> <tr> <td>0 PLACE</td> <td>± ---</td> <td>± ---</td> </tr> </tbody> </table> | | mm | INCH | 4 PLACES | ± --- | ± --- | 3 PLACES | ± --- | ± --- | 2 PLACES | ± 0.10 | ± --- | 1 PLACE | ± 0.20 | ± --- | 0 PLACE | ± --- | ± --- | DIMENSION STYLE MM ONLY DRAWN BY: JFLETCHER DATE: 2013/10/16 CHECKED BY: DATE: APPROVED BY: STGRIFFIN DATE: 2013/12/19 MATERIAL NO.: | SCALE 2:1 DESIGN UNITS METRIC THIRD ANGLE PROJECTION | TITLE 2CCT ML-XT CV CONNECTOR |
|---|--|--|-------------------------------------|----------------------------|------|----------|-------|-------|----------|-------|-------|----------|--------|-------|---------|--------|-------|---------|-------|-------|---|--|---|
| | | mm | INCH | | | | | | | | | | | | | | | | | | | | |
| | 4 PLACES | ± --- | ± --- | | | | | | | | | | | | | | | | | | | | |
| | 3 PLACES | ± --- | ± --- | | | | | | | | | | | | | | | | | | | | |
| 2 PLACES | ± 0.10 | ± --- | | | | | | | | | | | | | | | | | | | | | |
| 1 PLACE | ± 0.20 | ± --- | | | | | | | | | | | | | | | | | | | | | |
| 0 PLACE | ± --- | ± --- | | | | | | | | | | | | | | | | | | | | | |
| DRAFT WHERE APPLICABLE MUST REMAIN WITHIN DIMENSIONS | ANGULAR ± .5 ° | SEE NOTES | DOCUMENT NO. SD-93443-001 | SHEET NO. 1 OF 7 | | | | | | | | | | | | | | | | | | | |
| THIS DRAWING CONTAINS INFORMATION THAT IS PROPRIETARY TO MOLEX INCORPORATED AND SHOULD NOT BE USED WITHOUT WRITTEN PERMISSION | | | | | | | | | | | | | | | | | | | | | | | |
| | | | | | | | | | | | | | | | | | | | | | | | |

10 9 8 7 6 5 4 3 2 1

2CCT RECEPTACLE CONNECTOR

2CCT RECEPTACLE CONNECTOR WITH HEATSHRINK HOUSING ULTRA SONICALLY WELDED IN PLACE



- NOTES:
- MATERIAL
HOUSING: NYLON 30%GF
BACK SEAL: HIGH CONSISTENCY RUBBER
 - CIRCUIT IDENTIFICATION
 - JACKET RANGE LARGE = 2.7MM TO 3.6MM (SEAL COLOUR: LIGHT BLUE)
JACKET RANGE SMALL = 1.4MM TO 2.7MM (SEAL COLOUR: BURNT ORANGE)
 - SEE SHEET 3 FOR FINAL PART NUMBER DESIGNATION
 - SEE PS-93443-001 FOR PRODUCT SPECIFICATION
 - SEE PK-93443-001 FOR PACKAGING SPECIFICATION
- LAST INSPECTION NUMBER: 6
INSPECTION NUMBERS 1-50 RESERVED FOR SHEET 2

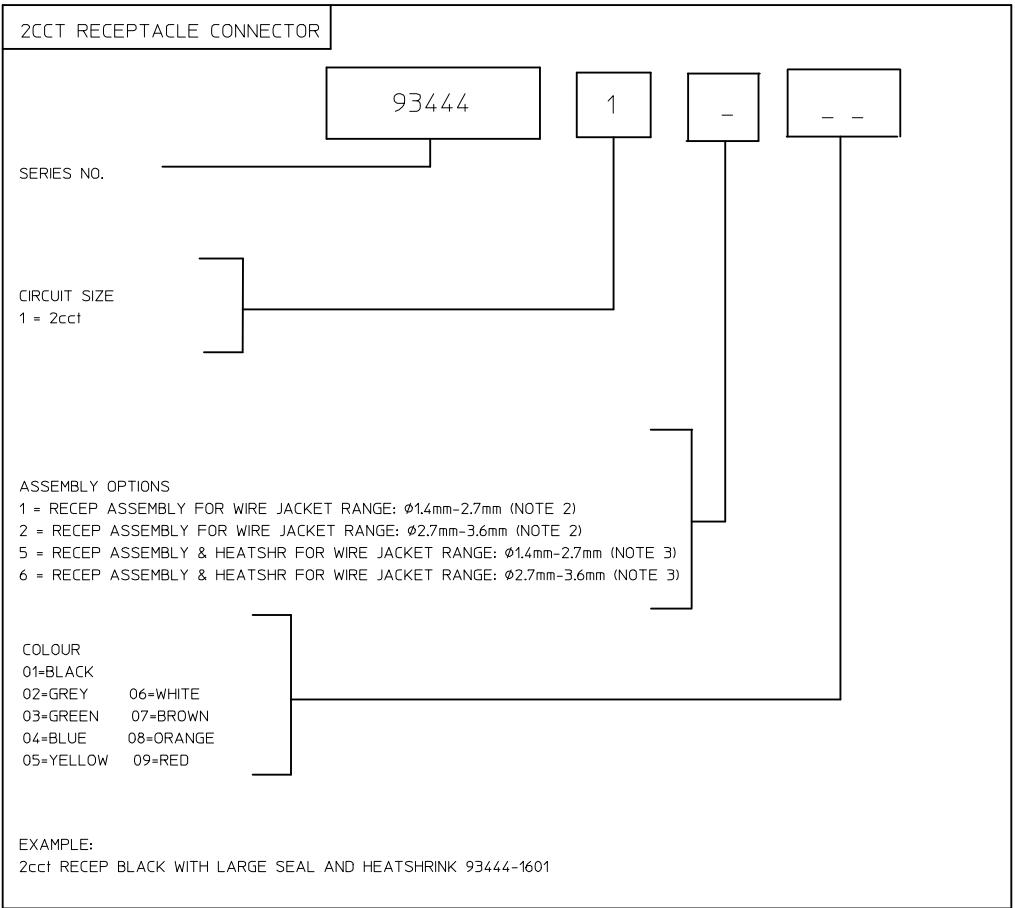
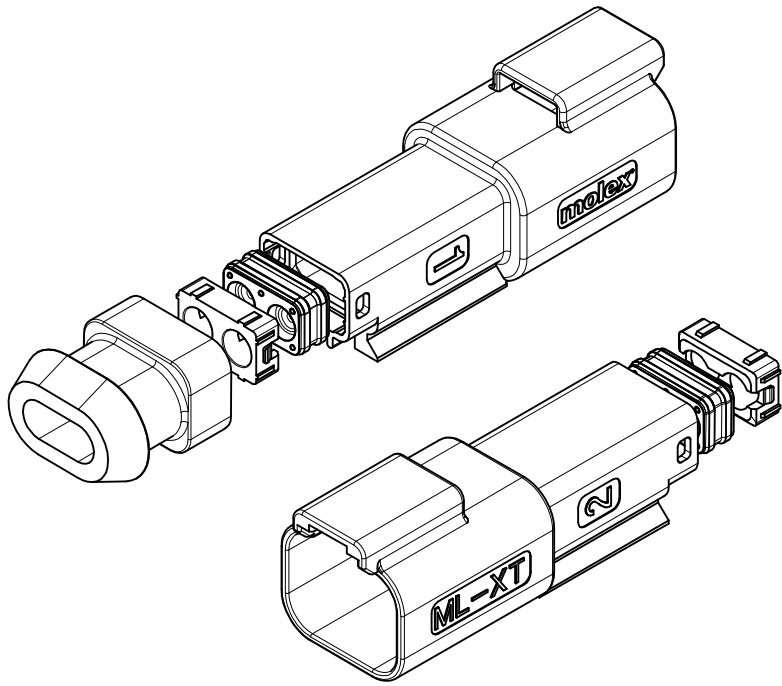
| | | |
|-------------|-------------|------------|
| SEE SHEET 1 | EC NO: | 2015/01/06 |
| | DRWN: | JFLETCHER |
| | CHKD: | |
| | APPR: | JWALLACE |
| | REV | 6 |
| | DESCRIPTION | 2015/01/12 |

| | | |
|--|--------------|--------------|
| QUALITY SYMBOLS | ▽=0 | |
| | ∇=0 | |
| | mm | INCH |
| | 4 PLACES | ± --- ± --- |
| | 3 PLACES | ± --- ± --- |
| | 2 PLACES | ± 0.10 ± --- |
| 1 PLACE | ± 0.20 ± --- | |
| 0 PLACE | ± --- ± --- | |
| ANGULAR ± .5 ° | | |
| DRAFT WHERE APPLICABLE MUST REMAIN WITHIN DIMENSIONS | | |

| | |
|---------------------------------------|------------|
| GENERAL TOLERANCES (UNLESS SPECIFIED) | |
| DIMENSION STYLE MM ONLY | |
| DRAWN BY | DATE |
| JFLETCHER | 2013/10/16 |
| CHECKED BY | DATE |
| APPROVED BY | DATE |
| STGRIFFIN | 2013/12/19 |
| MATERIAL NO. | |
| SEE NOTES | |

| | | |
|---|--------------|------------------------|
| SCALE | DESIGN UNITS | THIRD ANGLE PROJECTION |
| 1.5:1 | METRIC | ☉ |
| TITLE 2CCT ML-XT CV CONNECTOR | | |
| DOCUMENT NO. | | SHEET NO. |
| SD-93443-001 | | 2 OF 7 |
| THIS DRAWING CONTAINS INFORMATION THAT IS PROPRIETARY TO MOLEX INCORPORATED AND SHOULD NOT BE USED WITHOUT WRITTEN PERMISSION | | |

9 8 7 6 5 4 3 2 1

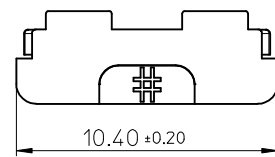
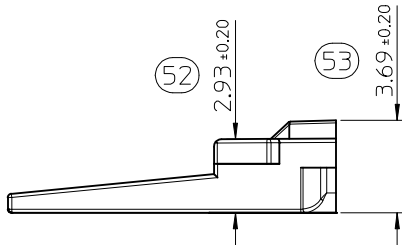
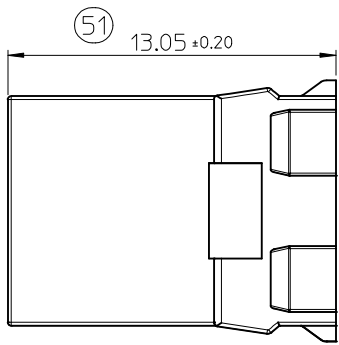
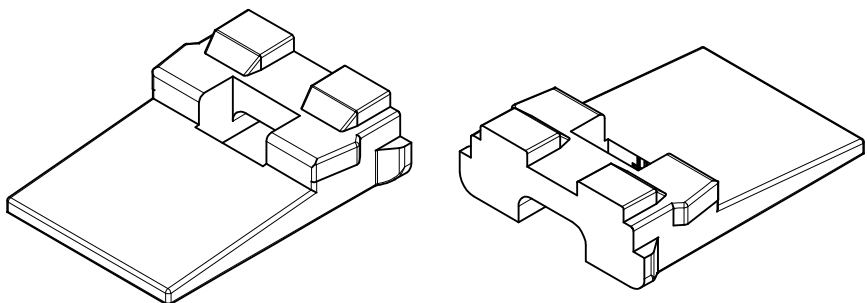


Notes:
 1. SEE SHEET 2 FOR UNSPECIFIED NOTES AND DIMENSIONS
 2. BACK COVER HOUSING COLOUR: BLACK
 3. PLEASE CONTACT MOLEX REGARDING HEATSHRINK HOUSING HEATSHRINK HOUSING COLOUR: BLACK

| | | | | | | | | | | | | | |
|-------------|--|----------------------------|--|---------------------------|---|-------------------------------|---------------------------------------|--|----------------------------|--|--------------|------------------------|------------------------|
| SEE SHEET 1 | EC NO: 6 | DRWN: JFLETCHER 2015/01/06 | CHKD: | APPR: JWALLACE 2015/01/12 | DESCRIPTION | QUALITY SYMBOLS ▽=0 ▽=0 | GENERAL TOLERANCES (UNLESS SPECIFIED) | | DIMENSION STYLE MM ONLY | | SCALE 2:1 | DESIGN UNITS METRIC | THIRD ANGLE PROJECTION |
| | 4 PLACES ± --- ± --- 3 PLACES ± --- ± --- 2 PLACES ± 0.10 ± --- 1 PLACE ± 0.20 ± --- 0 PLACE ± --- ± --- | | mm INCH DRAWN BY JFLETCHER DATE 2013/10/16 CHECKED BY DATE | | TITLE 2CCT ML-XT CV CONNECTOR | | | | | | | | |
| | ANGULAR ± .5 ° | | APPROVED BY STGRIFFIN DATE 2013/12/19 | | molex | | | | | | | | |
| | DRAFT WHERE APPLICABLE MUST REMAIN WITHIN DIMENSIONS | | MATERIAL NO. SEE NOTES | | DOCUMENT NO. SD-93443-001 | | | | | | | | |
| | | | SIZE A3 | | SHEET NO. 3 OF 7 | | | | | | | | |
| | | | | | THIS DRAWING CONTAINS INFORMATION THAT IS PROPRIETARY TO MOLEX INCORPORATED AND SHOULD NOT BE USED WITHOUT WRITTEN PERMISSION | | | | | | | | |

2CCT RECEP. WEDGELOCK

| | | | | |
|---------------|----------|---|---|----|
| SERIES NO. | 93447 | 1 | 0 | -- |
| CIRCUIT SIZE | 1 = 2cct | | | |
| COLOUR/KEYING | 03=GREEN | | | |



NOTES

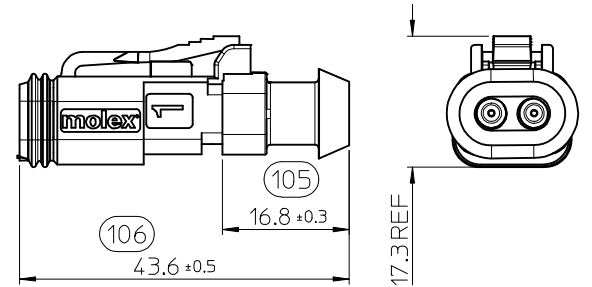
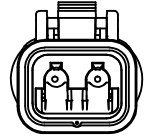
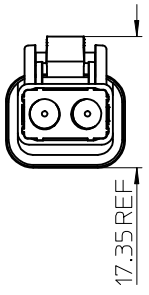
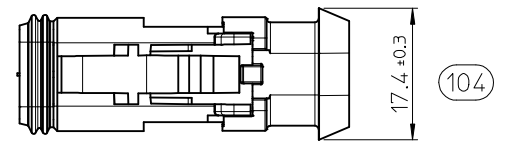
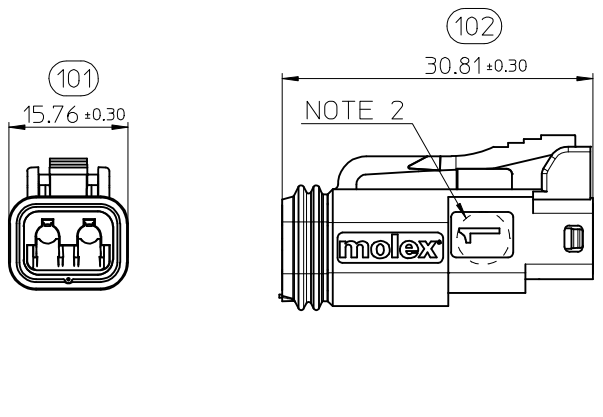
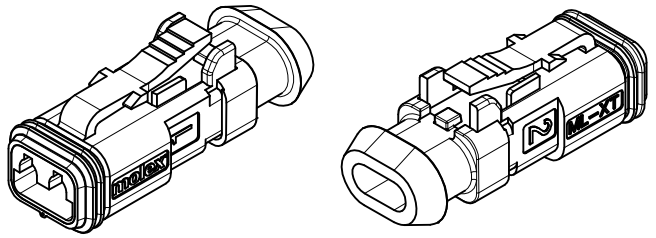
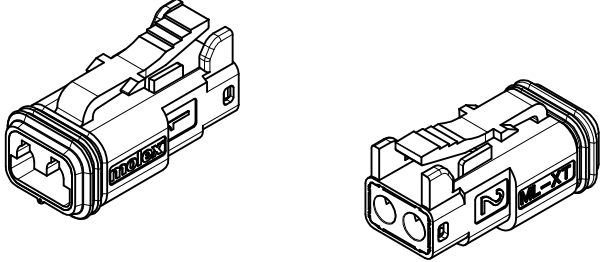
- MATERIAL
HOUSING: NYLON 30%GF
- INSPECTION NUMBERS 51-100
RESERVED FOR SHEET 4
LAST INSPECTION NUMBER 54

| SEE SHEET 1 EC NO: 6 DRWN: JFLETCHER 2015/01/06 CHKD: [blank] APPR: J WALLACE 2015/01/12 | QUALITY SYMBOLS ▽=0 ▽=0 | GENERAL TOLERANCES (UNLESS SPECIFIED) <table border="1"> <thead> <tr> <th></th> <th>mm</th> <th>INCH</th> </tr> </thead> <tbody> <tr> <td>4 PLACES</td> <td>± 0.15</td> <td>± 0.006</td> </tr> <tr> <td>3 PLACES</td> <td>± 0.20</td> <td>± 0.008</td> </tr> <tr> <td>2 PLACES</td> <td>± 0.25</td> <td>± 0.010</td> </tr> <tr> <td>1 PLACE</td> <td>± 0.30</td> <td>± 0.012</td> </tr> <tr> <td>0 PLACE</td> <td>± 0.40</td> <td>± 0.016</td> </tr> </tbody> </table> | | mm | INCH | 4 PLACES | ± 0.15 | ± 0.006 | 3 PLACES | ± 0.20 | ± 0.008 | 2 PLACES | ± 0.25 | ± 0.010 | 1 PLACE | ± 0.30 | ± 0.012 | 0 PLACE | ± 0.40 | ± 0.016 | DIMENSION STYLE MM ONLY | SCALE 5:1 | DESIGN UNITS METRIC | THIRD ANGLE PROJECTION |
|--|-------------------------------|---|---|------------------|------|----------|--------|---------|----------|--------|---------|----------|--------|---------|---------|--------|---------|---------|--------|---------|----------------------------|--------------|------------------------|------------------------|
| | | mm | INCH | | | | | | | | | | | | | | | | | | | | | |
| | 4 PLACES | ± 0.15 | ± 0.006 | | | | | | | | | | | | | | | | | | | | | |
| | 3 PLACES | ± 0.20 | ± 0.008 | | | | | | | | | | | | | | | | | | | | | |
| 2 PLACES | ± 0.25 | ± 0.010 | | | | | | | | | | | | | | | | | | | | | | |
| 1 PLACE | ± 0.30 | ± 0.012 | | | | | | | | | | | | | | | | | | | | | | |
| 0 PLACE | ± 0.40 | ± 0.016 | | | | | | | | | | | | | | | | | | | | | | |
| DRAWN BY: JFLETCHER CHECKED BY: [blank] | DATE: 2013/10/16 | TITLE: 2CCT ML-XT CV CONNECTOR | | | | | | | | | | | | | | | | | | | | | | |
| APPROVED BY: STGRIFIN | DATE: 2013/12/19 | MATERIAL NO. | DOCUMENT NO. SD-93443-001 | SHEET NO. 4 OF 7 | | | | | | | | | | | | | | | | | | | | |
| DRAFT WHERE APPLICABLE MUST REMAIN WITHIN DIMENSIONS | | SEE NOTES | THIS DRAWING CONTAINS INFORMATION THAT IS PROPRIETARY TO MOLEX INCORPORATED AND SHOULD NOT BE USED WITHOUT WRITTEN PERMISSION | | | | | | | | | | | | | | | | | | | | | |

10 9 8 7 6 5 4 3 2 1

2CCT PLUG CONNECTOR

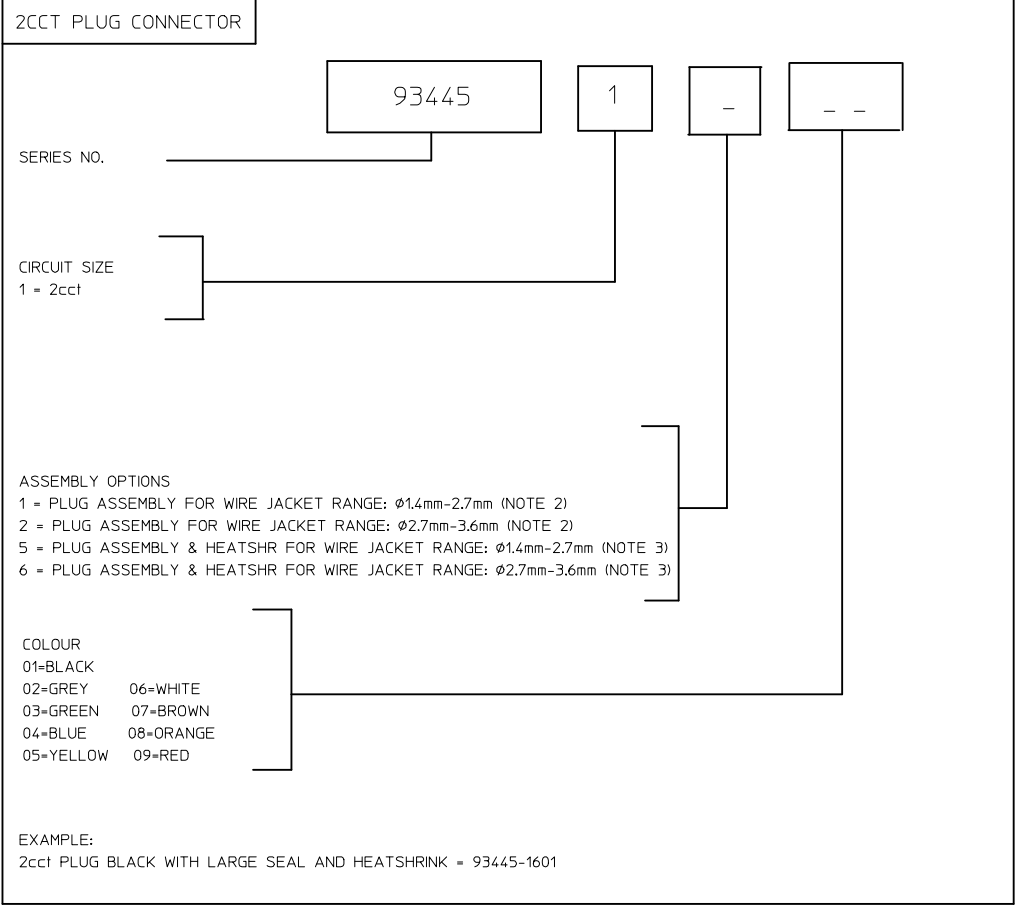
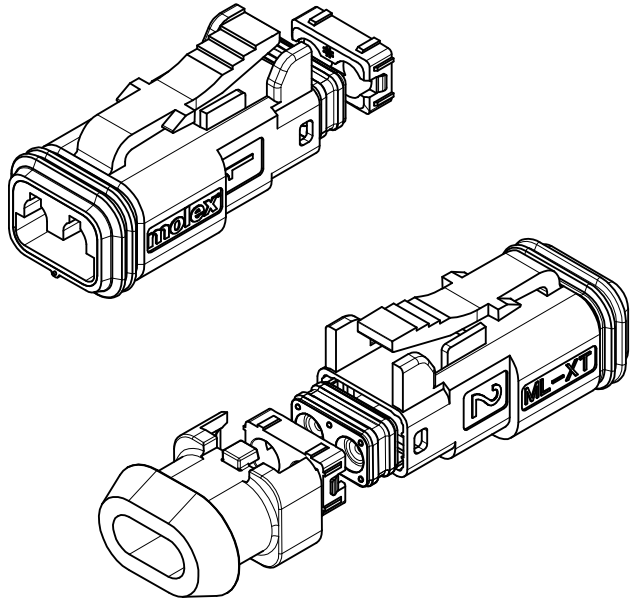
2CCT PLUG CONNECTOR WITH HEATSHRINK HOUSING ULTRA SONICALLY WELDED IN PLACE



- NOTES
- MATERIAL
HOUSING: NYLON 30%GF
PLUG SEAL: SILICONE RUBBER
BACK SEAL: HIGH CONSISTENCY RUBBER
 - CIRCUIT IDENTIFICATION
 - JACKET RANGE LARGE = 2.7MM TO 3.6MM (SEAL COLOUR: LIGHT BLUE)
JACKET RANGE SMALL = 1.4MM TO 2.7MM (SEAL COLOUR: BURNT ORANGE)
 - SEE SHEET 6 FOR FINAL PART NUMBER DESIGNATION
 - INSPECTION NUMBERS 101-150 RESERVED FOR SHEET 5
LAST INSPECTION NUMBER 106.
INSPECTION NUMBERS 103 & 107 DELETED.

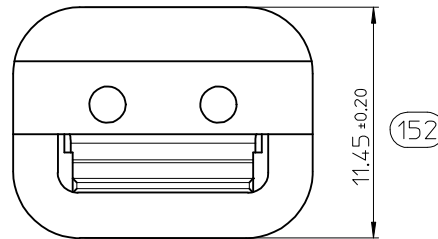
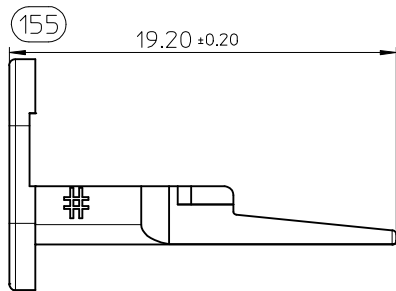
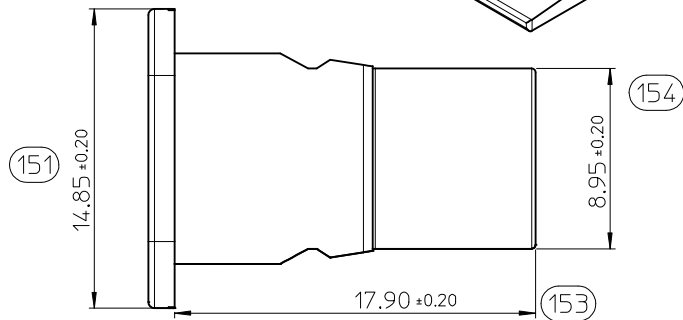
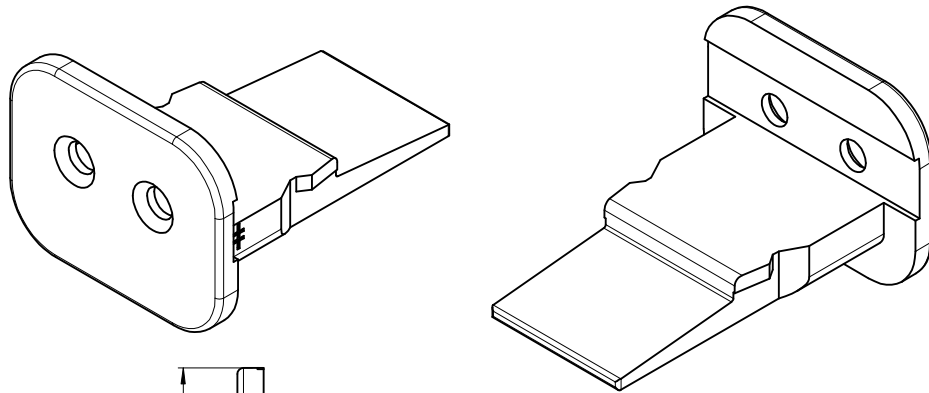
| | | | | | | | | | | | | |
|-------------|--------|-----------------|------------|-------------------------------|---------------------------------------|--|----------------------------|--------------------------|---|----------------------------------|------------------------|--|
| SEE SHEET 1 | EC NO: | DRWN: JFLETCHER | 2015/01/06 | QUALITY SYMBOLS ▽=0 ◻=0 | GENERAL TOLERANCES (UNLESS SPECIFIED) | | DIMENSION STYLE MM ONLY | | SCALE 1.5:1 | DESIGN UNITS METRIC | THIRD ANGLE PROJECTION | |
| | CHKD: | APPR: JWALLACE | 2015/01/12 | | | mm | INCH | DRAWN BY JFLETCHER | DATE 2013/10/16 | TITLE 2CCT ML-XT CV CONNECTOR | | |
| | REV | | | | | 4 PLACES | ± --- ± --- | CHECKED BY | DATE | | | |
| | | | | | | 3 PLACES | ± --- ± --- | APPROVED BY STGRIFFIN | DATE 2013/12/19 | | | |
| | | | | | 2 PLACES | ± 0.10 ± --- | MATERIAL NO. | | DOCUMENT NO. | | SHEET NO. | |
| | | | | | 1 PLACE | ± 0.20 ± --- | SEE NOTES | | SD-93443-001 | | 5 OF 7 | |
| | | | | | 0 PLACE | ± --- ± --- | SIZE A3 | | THIS DRAWING CONTAINS INFORMATION THAT IS PROPRIETARY TO MOLEX INCORPORATED AND SHOULD NOT BE USED WITHOUT WRITTEN PERMISSION | | | |
| | | | | | | ANGULAR ± .5 ° | | | | | | |
| | | | | | | DRAFT WHERE APPLICABLE MUST REMAIN WITHIN DIMENSIONS | | | | | | |

9 8 7 6 5 4 3 2 1



- NOTES
- SEE SHEET 5 FOR UNSPECIFIED NOTES AND DIMENSIONS
 - BACK COVER HOUSING COLOUR: BLACK
 - PLEASE CONTACT MOLEX REGARDING HEATSHRINK HOUSING HEATSHRINK HOUSING COLOUR: BLACK

| | | | | | | | | | | | |
|-------------|-------------|------------|-----------------|---------------------------------------|-----------|--|---------------------------|------------------------------|---|------------------------|--|
| SEE SHEET 1 | EC NO: | 2015/01/06 | QUALITY SYMBOLS | GENERAL TOLERANCES (UNLESS SPECIFIED) | | DIMENSION STYLE | | SCALE | DESIGN UNITS | THIRD ANGLE PROJECTION | |
| | DRWN: | JFLETCHER | | mm | INCH | MM ONLY | 2:1 | METRIC | TITLE 2CCT ML-XT CV CONNECTOR | | |
| | CHKD: | | | 4 PLACES | \pm --- | \pm --- | DRAWN BY | DATE | | | |
| | APPR: | JWALLACE | | 3 PLACES | \pm --- | \pm --- | JFLETCHER | 2013/10/16 | CHECKED BY | DATE | |
| REV | DESCRIPTION | | 2 PLACES | \pm 0.10 | \pm --- | APPROVED BY | DATE | DOCUMENT NO. SD-93443-001 | | SHEET NO. 6 OF 7 | |
| 0 | | 1 PLACE | \pm 0.20 | \pm --- | STGRIFFIN | 2013/12/19 | MATERIAL NO. SEE NOTES | | | | |
| | | | 0 PLACE | \pm --- | \pm --- | DRAFT WHERE APPLICABLE MUST REMAIN WITHIN DIMENSIONS | | | THIS DRAWING CONTAINS INFORMATION THAT IS PROPRIETARY TO MOLEX INCORPORATED AND SHOULD NOT BE USED WITHOUT WRITTEN PERMISSION | | |



2CCT PLUG WEDGELOCK

SERIES NO. 93448 1 0 --

CIRCUIT SIZE 1 = 2cct

COLOUR/KEYING 03=GREEN

- NOTES
- MATERIAL
HOUSING: NYLON 30%GF
 - INSPECTION NUMBERS 151-200 RESERVED FOR SHEET 7
LAST INSPECTION NUMBER 155

| | | | | | | | | | | | |
|--|-------------------|-------------------------------|---------------------------------------|-----------------------|----------------------------|-----------------------|---------------------------|-------------------------------------|------------------------|--|--|
| SEE SHEET 1 | EC NO: 2015/01/06 | QUALITY SYMBOLS ▽=0 ◻=0 | GENERAL TOLERANCES (UNLESS SPECIFIED) | | DIMENSION STYLE MM ONLY | | SCALE 4:1 | DESIGN UNITS METRIC | THIRD ANGLE PROJECTION | | |
| | DRWN: JFLETCHER | | DATE: 2013/10/16 | mm | INCH | DRAWN BY JFLETCHER | DATE | TITLE 2CCT ML-XT CV CONNECTOR | | | |
| | CHKD: | | DATE: | 4 PLACES ± --- ± --- | 3 PLACES ± --- ± --- | CHECKED BY | DATE | APPROVED BY STGRIFFIN 2013/12/19 | | | |
| | APPR: JWALLACE | | DATE: | 2 PLACES ± 0.10 ± --- | 1 PLACE ± 0.20 ± --- | APPROVED BY | | | | | |
| REV 0 | DESCRIPTION | 0 PLACE ± --- ± --- | ANGULAR ± .5 ° | | MATERIAL NO. | | DOCUMENT NO. SD-93443-001 | | | | |
| DRAFT WHERE APPLICABLE MUST REMAIN WITHIN DIMENSIONS | | | SEE NOTES | | SIZE A3 | | SHEET NO. 7 OF 7 | | | | |