

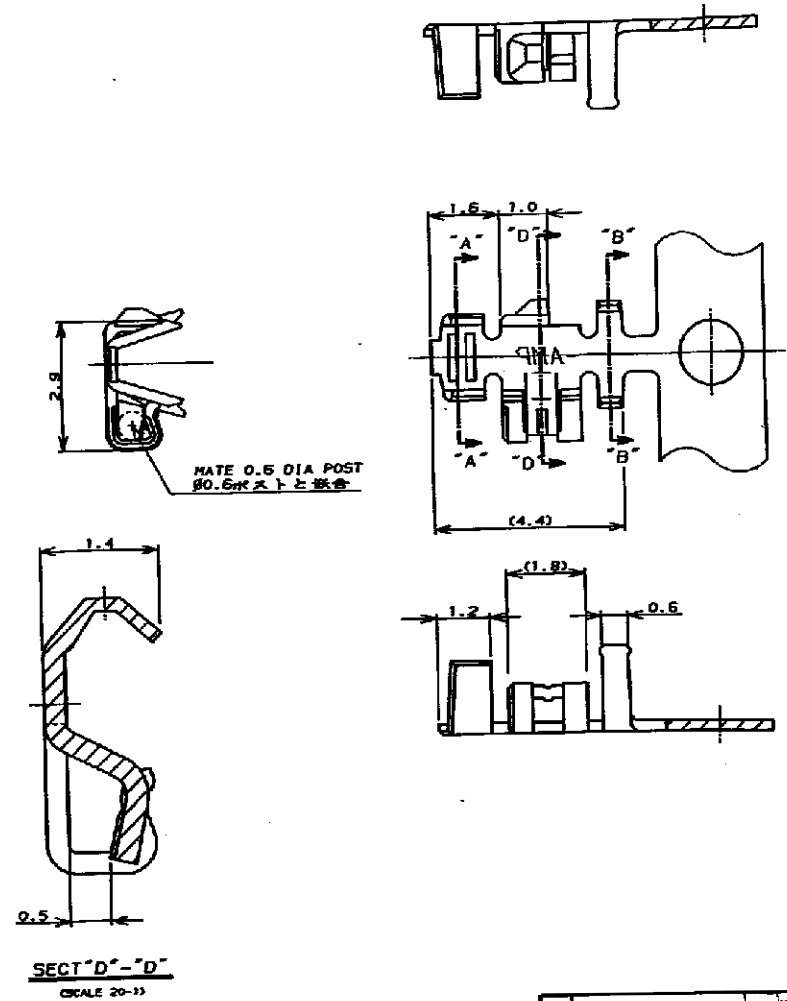
NUMBER C-175102



METRIC

DIMENSIONS IN MILLIMETERS. DO NOT SCALE PRINT.

PRINTED BY



- 注:
1. 使用ハウジングは型番 175778
  2. 製品規格 : 108-5297
  3. 取付適用規格 : 114-5140

- NOTES:
1. USE HOUSING ; P/N 175778
  2. PRODUCT SPEC ; 108-5297
  3. APPLICATION SPEC ; 114-5140

OBSOLETE	NICKEL PLATED PHOSPHOR BRONZE (ONLY CONTACT AREA GOLD PLT. 0.2μ) 銅青銅にニッケル下地、接触部に金めっき0.2μ	1-175102-2
	PRE TINNED PHOSPHOR BRONZE (0.25μ) 錫めっき銅青銅 (0.25μ)	1-175102-1
	L/P CONTACT L/P端子	PART NO. 型番



MTR RANGE 0.12 -0.35mm <sup>2</sup> (AWG26-22)		INSULATION DIA 1.0-1.5mm	NAME 圧着タイプ リセコンタクト CRIMP TYPE RECEPTACLE CONTACT (AMP CT CONNECTOR 2mm PITCH)
MATERIAL SEE TABLE 表参照	FINISH SEE TABLE 表参照	GENERAL TOLERANCE	SIZE LOC NUMBER B J C-175102
DR. T. NAKAMURA 4/6/80	CHK. S. KIKUCHI 4/9/80	APP. S. KIKUCHI	SCALE 10-1
REVISED PER ECO-11-005033		REV. H2	SHEET 1 OF 2

H2	REVISED PER ECO-11-005033	RK	HMR	APR11
LTR	REVISION RECORD	DR	CHK	DATE

CUSTOMER DRAWING

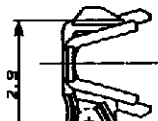
NUMBER C-175102



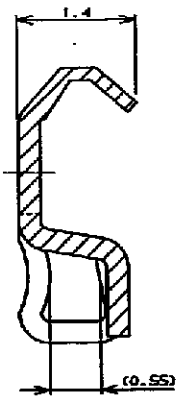
METRIC

DIMENSIONS IN MILLIMETERS. DO NOT SCALE PRINT

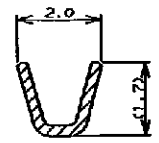
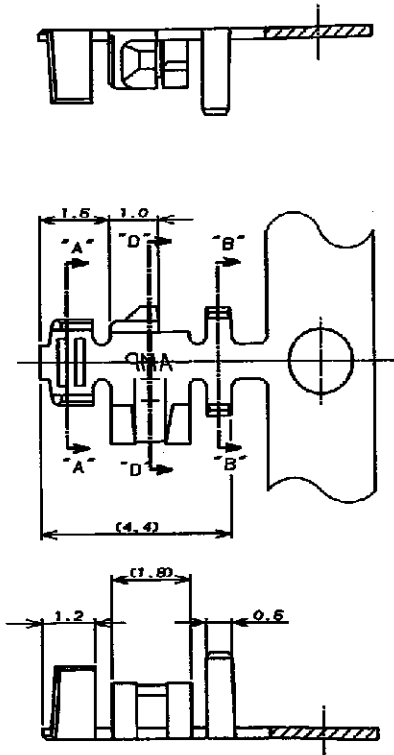
PRINT DATE



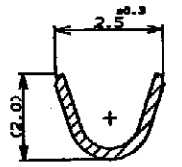
MATE 0.6 DIA POST  
0.6mmストと嵌合



SECT "D"-"D"  
(SCALE 20-1)



SECT "A"-"A"



SECT "B"-"B"

- 注:
1. 使用ハウジングは型番 175778
  2. 製品規格: 108-5297
  3. 取付適用規格: 114-5140

- NOTES:
1. USE HOUSING ; P/N 175778
  2. PRODUCT SPEC ; 108-5297
  3. APPLICATION SPEC ; 114-5140

INACTIVE		NICKEL PLATED PHOSPHOR BRONZE (ONLY CONTACT AREA GOLD PLY: 0.2μ) 銅青銅にニッケル下地、接触部に金めっき0.2μ	175102-2
	175161-1	PRE TINNED PHOSPHOR BRONZE (0.25μ) 鍍めつき銅青銅 (厚さ0.25)	175102-1
	L/F CONTACT L/F端子	MATERIAL & FINISH 材質	PART NO. 型番



LTR		REVISION RECORD	DR	CHK	DATE

WIRE RANGE 0.12 -0.35mm <sup>2</sup> (AWG26-32)	INSULATION DIA 1.0-1.5mm	NAME 圧着タイプ リセコンタクト CRIMP TYPE RECEPTACLE CONTACT (AMP CT CONNECTOR 2mm PITCH)
MATERIAL SEE TABLE 参考照	FINISH SEE TABLE 参考照	GENERAL TOLERANCE
DR. T. NAKAMURA 4/8/80	DE. T. NAKAMURA	SIZE LOC NUMBER
CHK. S. KIKUCHI 4/27/80	APP. <i>S. Kikuchi</i>	B J C-175102
		SCALE REV. SHEET
		10-1 H2 2 OF 2

CUSTOMER DRAWING