

1-175161-1 : 本図
1-175161-1 : AS SHOWN

NUMBER C-175161
METRIC
3rd ANGLE PROJECTION

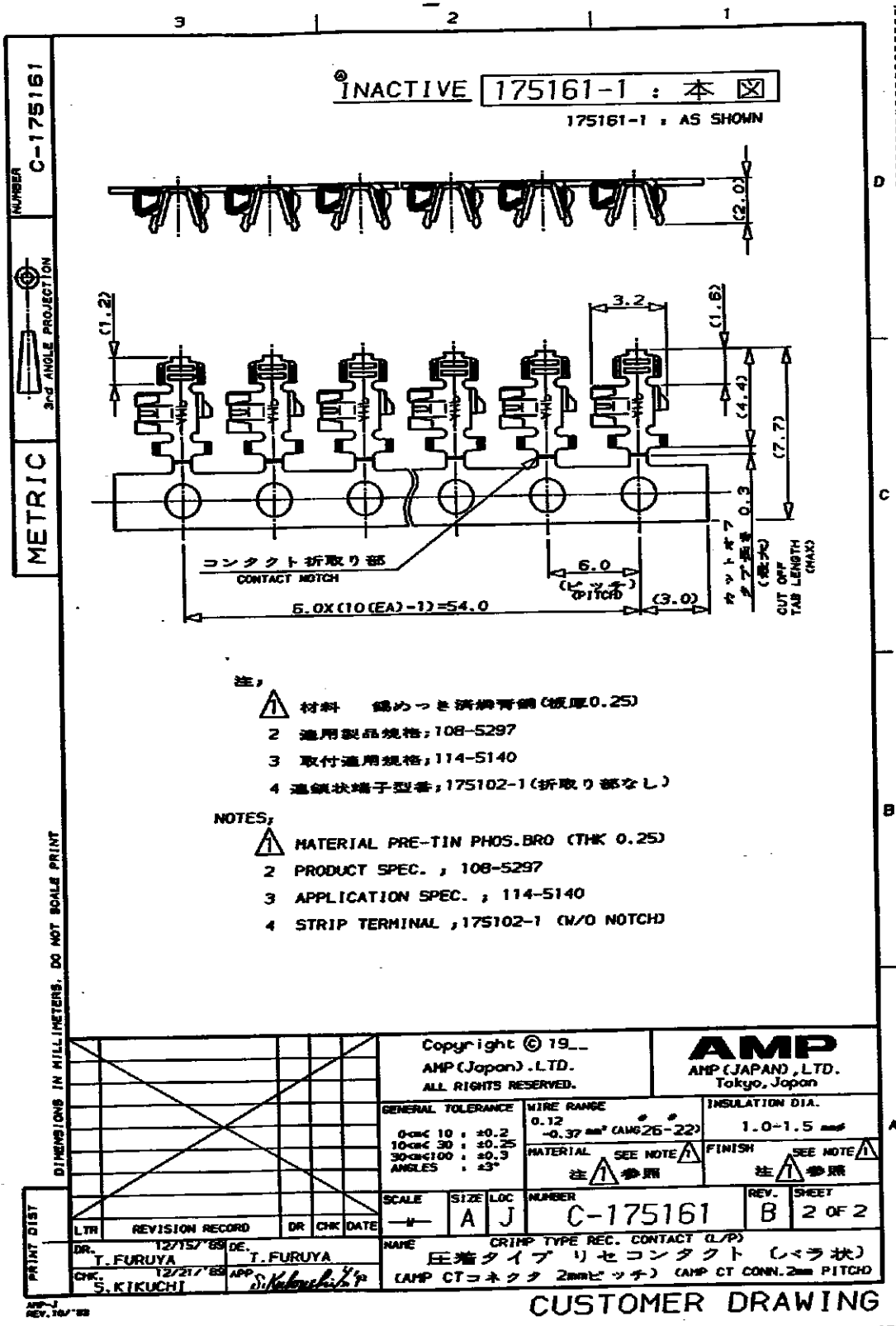
- 注;
- 1 材料 錫めっき済磷青銅 (板厚0.25)
 - 2 適用製品規格, 108-5297
 - 3 取付適用規格, 114-5140
 - 4 温度端子型番, 1-175102-1 (折取り部なし)

- NOTES,
- 1 MATERIAL PRE-TIN PHOS.BRO (THK 0.25)
 - 2 PRODUCT SPEC. , 108-5297
 - 3 APPLICATION SPEC. , 114-5140
 - 4 STRIP TERMINAL , 1-175102-1 (W/O NOTCH)

DIMENSIONS IN MILLIMETERS. DO NOT SCALE PRINT

		Copyright © 19__ AMP (Japan) . LTD. ALL RIGHTS RESERVED.		AMP AMP (JAPAN) , LTD. Tokyo, Japan	
		GENERAL TOLERANCE	WIRE RANGE	INSULATION DIA.	
		0-100 : ±0.2	0.12	1.0-1.5 mmφ	
		10-300 : ±0.25	-0.37 mm ² (AWG26-22)	MATERIAL SEE NOTE 1	
		300-1000 : ±0.3	注 1 参照	FINISH SEE NOTE 2	
		ANGLES : ±3°	SCALE	SIZE	LOC
			→	A	J
			NUMBER	REV.	SHEET
			C-175161	B	1 OF 2
PRINT DIST		NAME CRIMP TYPE REC. CONTACT (L/P)			
DR. T. FURUYA		圧着タイプ リセコンタクト (バラ状)			
CHK. S. KIKUCHI		(AMP CTコネクタ 2mmピッチ) (AMP CT CONN. 2mm PITCH)			

CUSTOMER DRAWING



NUMBER C-175161



METRIC

DIMENSIONS IN MILLIMETERS. DO NOT SCALE PRINT

- 注,
- 1 材料 錫めっき析純青銅 (板厚0.25)
 - 2 適用製品規格; 108-5297
 - 3 取付適用規格; 114-5140
 - 4 通気状端子型番; 175102-1 (折取り部なし)

- NOTES:
- 1 MATERIAL PRE-TIN PHOS.BRO (THK 0.25)
 - 2 PRODUCT SPEC. ; 108-5297
 - 3 APPLICATION SPEC. ; 114-5140
 - 4 STRIP TERMINAL ; 175102-1 (W/O NOTCH)

LTR	REVISION RECORD	DR	CHK	DATE
DR.	T. FURUYA	12/15/68	DE.	T. FURUYA
CHK.	S. KIKUCHI	12/21/68	APP.	<i>S. Kikuchi</i>

Copyright © 19__
AMP (Japan) .LTD.
ALL RIGHTS RESERVED.

AMP
AMP (JAPAN) ,LTD.
Tokyo, Japan

GENERAL TOLERANCE	WIRE RANGE	INSULATION DIA.
0mm 10 : ± 0.2 10mm 30 : ± 0.25 30mm 100 : ± 0.3 ANGLES : $\pm 3^\circ$	0.12 -0.37 mm^2 (AWG26-22)	1.0-1.5 mm
MATERIAL	SEE NOTE 1	FINISH
注 参照		注 参照

SCALE	SIZE	LOC	NUMBER	REV.	SHEET
1:1	A	J	C-175161	B	2 OF 2

CRIMP TYPE REC. CONTACT (L/P)
圧着タイプリセコンタクト (レラ状)
(AMP CTコネクタ 2mmピッチ) (AMP CT CONN. 2mm PITCH)

CUSTOMER DRAWING