

High Frequency Ceramic Solutions

2.4 GHz Impedance-Matched Integrated RF Front End Passive Balun Filter for ADF7241 and AADF7242

P/N 2450BM14E0007

Detail Specification: 8/30/2012

Page 1 of 3

General Specifications

Part Number	2450BM14E0007
Frequency (MHz)	2400 - 2500
Unbalanced Impedance (Antenna Out)	50 Ω
Balanced Differential Impedance	Conjugate match to ADI ADF7241 and ADF7242
Attenuation (dB)	25min.@4800~5000MHz 25min.@7200~7500MHz
Power Capacity	2W max.

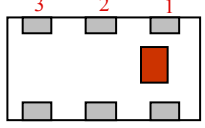
Insertion Loss	1.5 dB max.
Return Loss	9.5 dB min.
Phase Difference	180° \pm 10°
Amplitude Difference	2.0 dB max.
Reel Quantity	4,000
Operating Temperature	-40 to +85°C
Recommended Storage Conditions	+5 to +35°C, Humidity: 45-75%RH, 18 mos. Max *

*18 months in vacuum sealed bag and 1 week cumulative after opened. For more info go to www.johansontechnology.com/silverleads

P/N	Packaging Style	Bulk	Suffix = S	Eg. 2450BM14E0007S
		T & R (Paper)	Suffix = E	Eg. 2450BM14E0007T
Suffix	Termination Style	AgPt	Suffix = None	Eg. 2450BM14E0007(S or T)

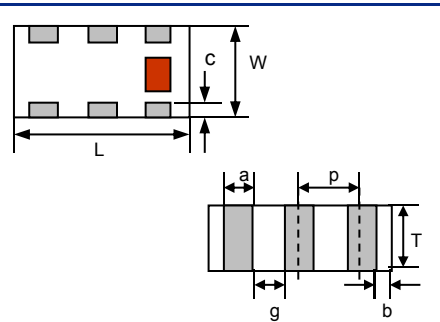
Terminal Configuration

No.	Function
1	Unbalanced Port
2	GND
3	Balanced Port
4	Balanced Port
5	GND
6	GND



Mechanical Dimensions

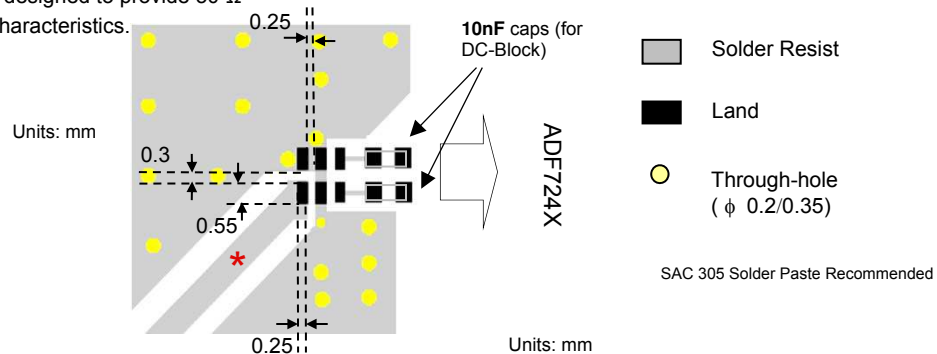
	In	mm
L	0.063 \pm 0.004	1.60 \pm 0.10
W	0.031 \pm 0.004	0.80 \pm 0.10
T	0.024 \pm 0.004	0.60 \pm 0.10
a	0.008 \pm 0.004	0.20 \pm 0.10
b	0.008 +.004/-0.006	0.20 +0.1/-0.15
c	0.006 \pm 0.004	0.15 \pm 0.10
g	0.012 \pm 0.004	0.30 \pm 0.10
p	0.020 \pm 0.002	0.50 \pm 0.05



Mounting Considerations

Mount these devices with brown mark facing up.

* Line width should be designed to provide 50 Ω impedance matching characteristics.



Johanson Technology, Inc. reserves the right to make design changes without notice.
All sales are subject to Johanson Technology, Inc. terms and conditions.

High Frequency Ceramic Solutions

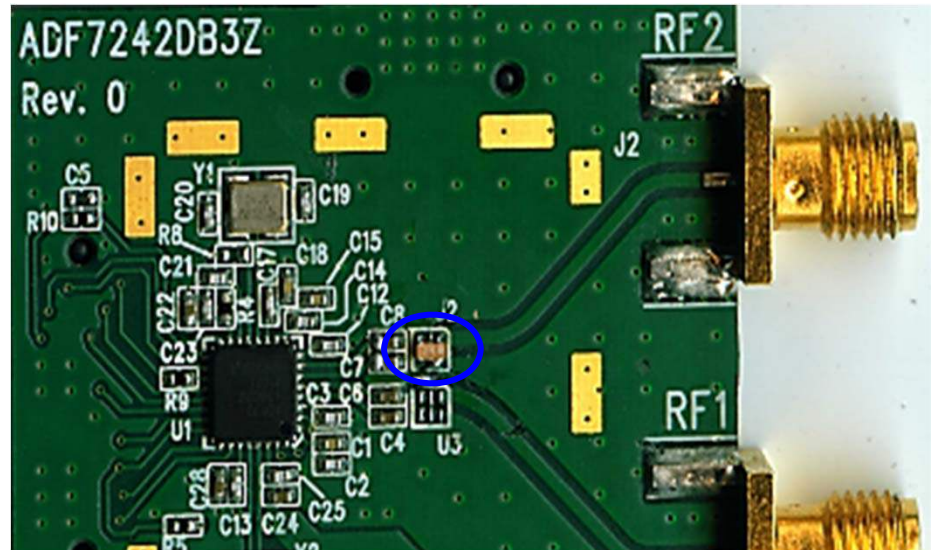
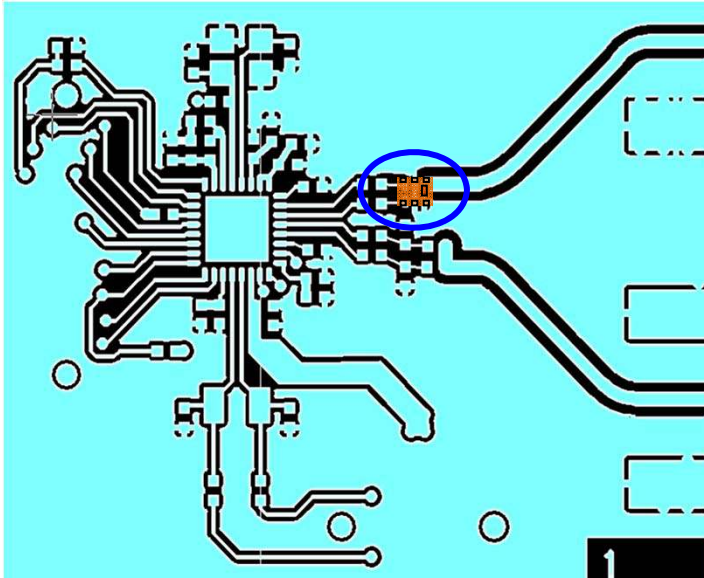
2.4 GHz Impedance-Matched Integrated RF Front End Passive Balun Filter
for ADF7241 and AADF7242

P/N 2450BM14E0007

Detail Specification: 8/30/2012

Page 2 of 3

Layout Details



Johanson Technology, Inc. reserves the right to make design changes without notice.
All sales are subject to Johanson Technology, Inc. terms and conditions.

High Frequency Ceramic Solutions

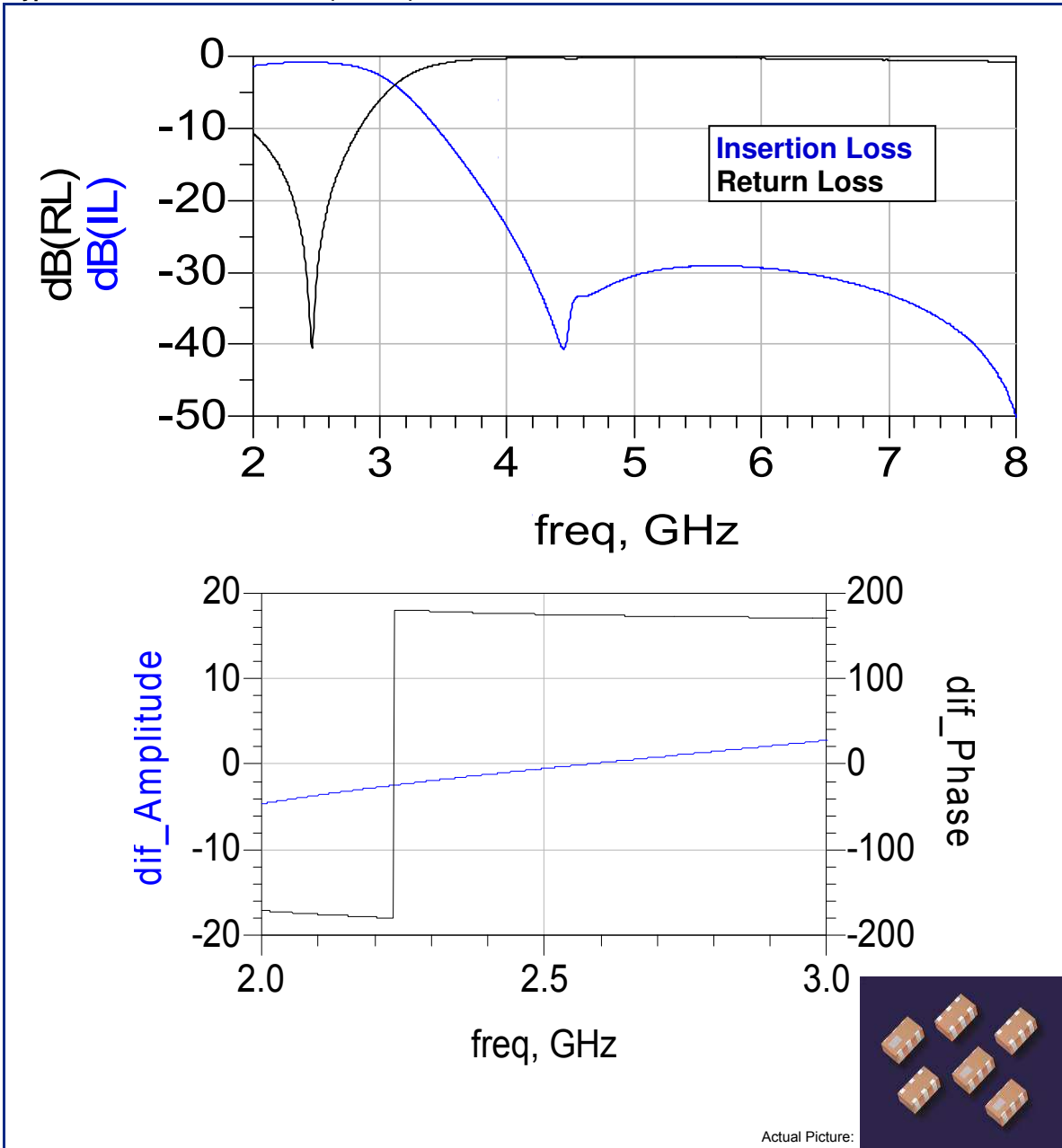
2.4 GHz Impedance-Matched Integrated RF Front End Passive Balun Filter
for ADF7241 and AADF7242

P/N 2450BM14E0007

Detail Specification: 8/30/2012

Page 3 of 3

Typical Electrical Performance (T=25°C)



Johanson Technology, Inc. reserves the right to make design changes without notice.
All sales are subject to Johanson Technology, Inc. terms and conditions.



www.johansontechnology.com
4001 Calle Tecate • Camarillo, CA 93012 • TEL 805.389.1166 FAX 805.389.1821

2012 Johanson Technology, Inc. All Rights Reserved