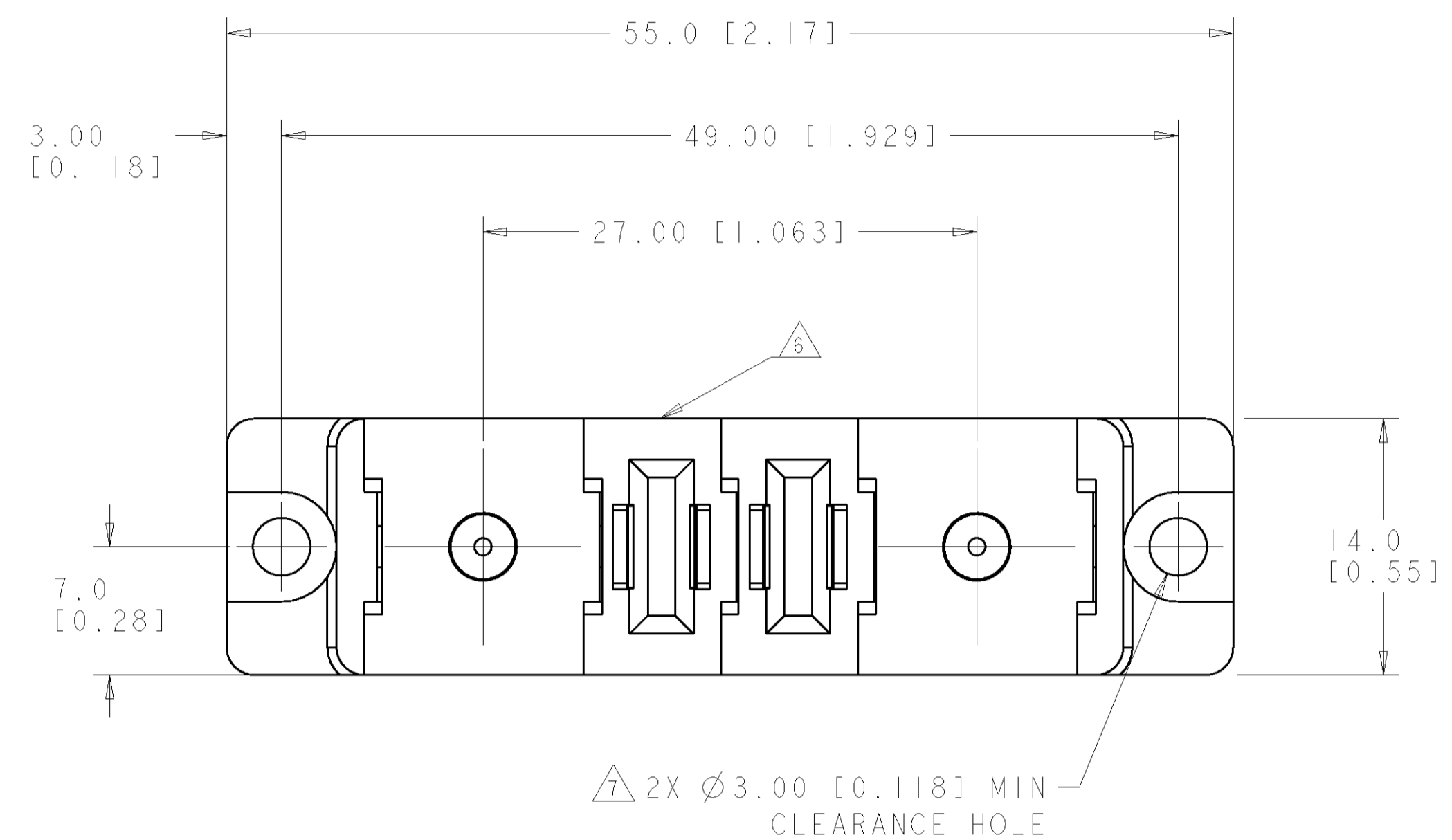


LOC		DIST		REVISIONS			
GP	00	P	LTR	DESCRIPTION	DATE	DWN	APVD
		A		RELEASED	15FEB2007	RG	PD

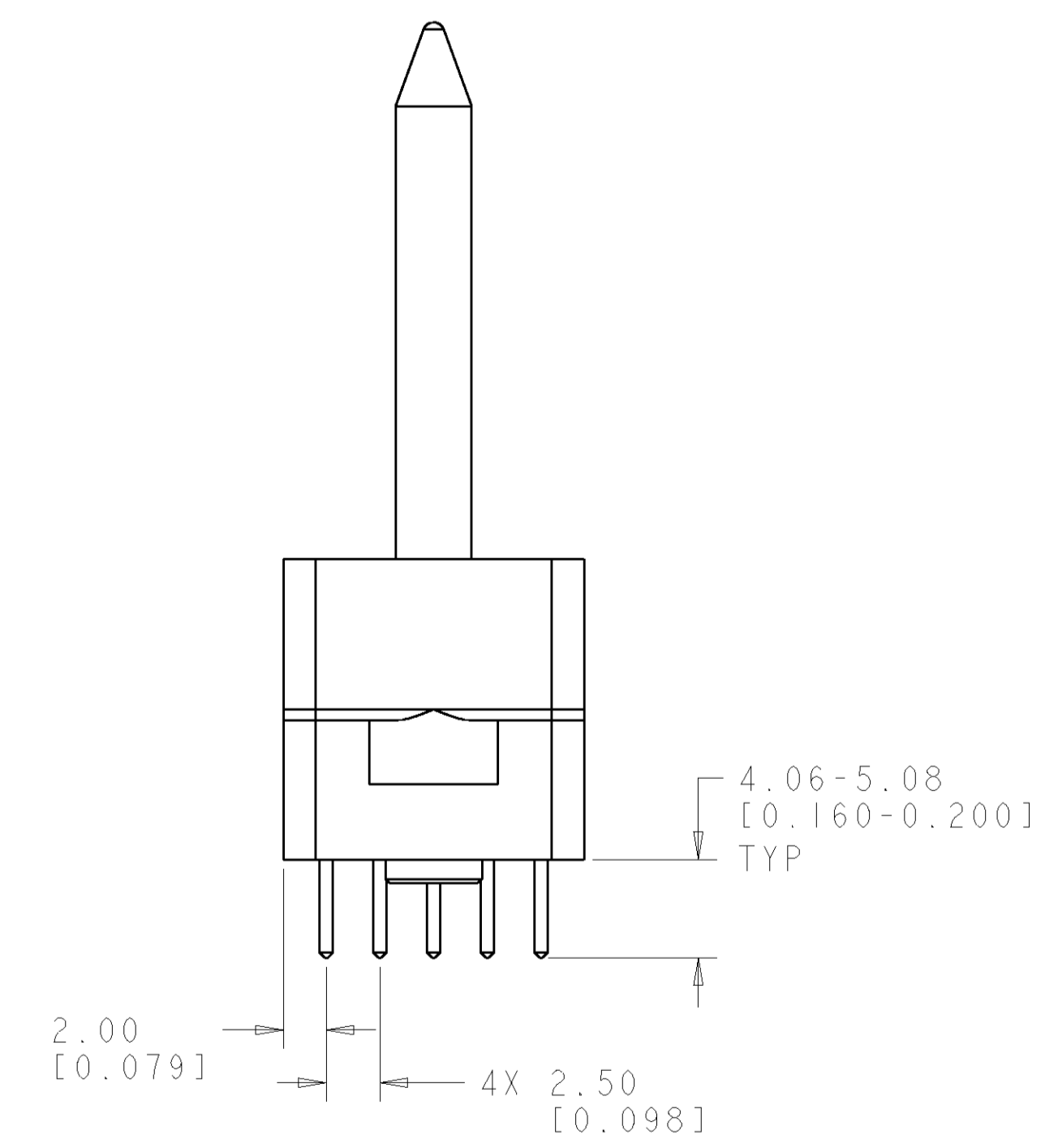
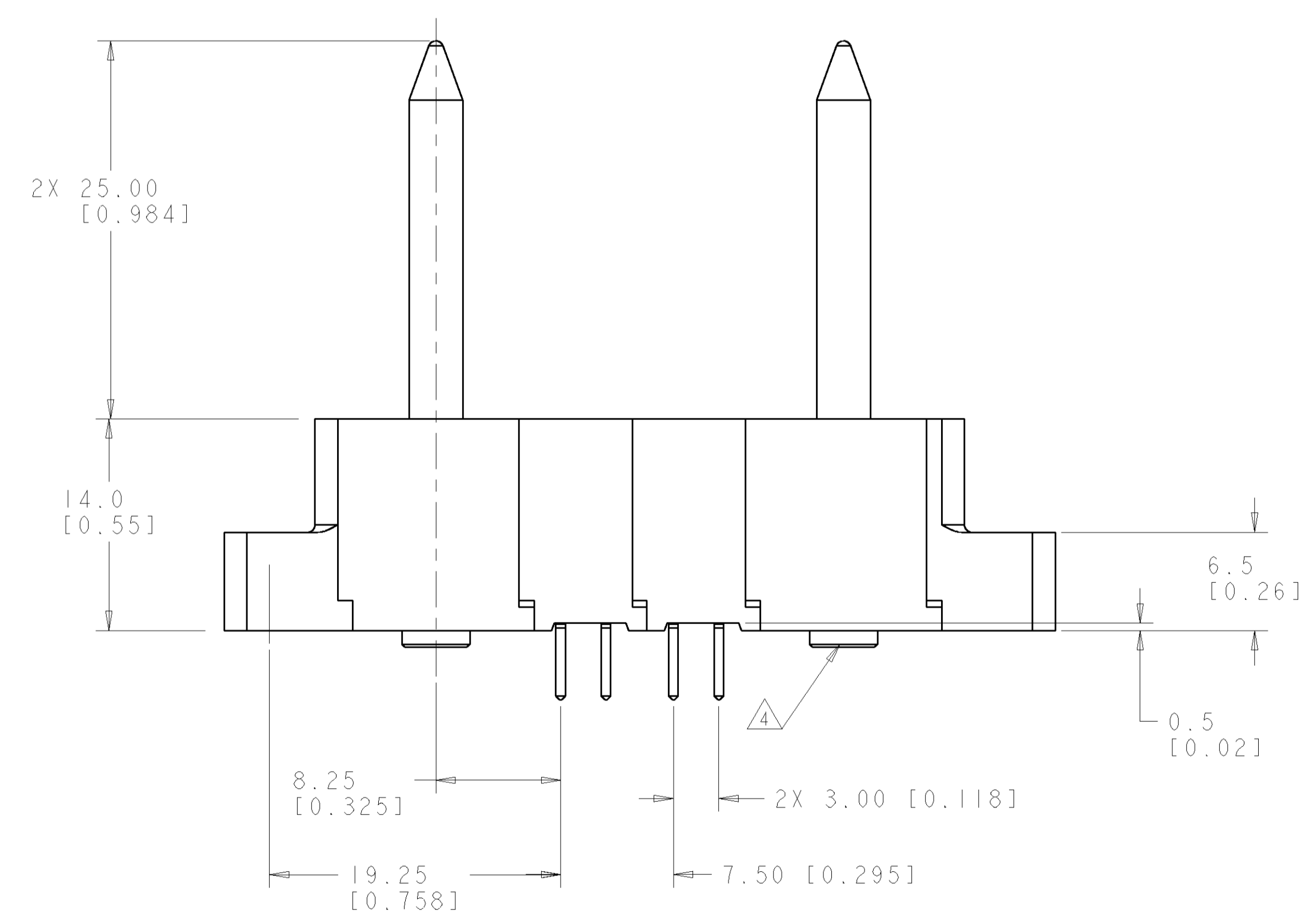


- PART NUMBER CHANGES AND OR DESIGN CHANGES AFFECTING ITEM INTERCHANGEABILITY REQUIRE PRIOR TYCO APPROVAL AND AUTHORIZATION BY REVISION TO THIS DRAWING.
- MATERIAL:
 INSULATORS - THERMOPLASTIC, GLASS REINFORCED, COLOR: BLACK
 UL94V-0 FLAMMABILITY RATED.
 POWER CONTACTS - PHOSPHOR BRONZE ALLOY,
 COPPER ALLOY
 CROWN BAND-BERYLLIUM COPPER ALLOY
 GUIDE PIN-COPPER ALLOY
- FINISH:
 CONTACTS - GOLD PLATE .000030" MIN. THK., OVER NICKEL
 .000040" MIN. THK
 TERMINALS- TIN .000120" MIN. THK, OVER NICKEL .000040 MIN THK.
 GUIDE PIN - SILVER PLATE .000200" MIN THK. OVER NICKEL .00004" MIN THK.

△ ACTIVE GUIDE PIN ACCEPT M3 SCREWS, (USER SUPPLIED)
 5. THIS CONNECTOR MATES WITH SOCKET CONNECTOR PN 1926310-1
 △ ITEMS PROVIDED TO THIS SPECIFICATION TO BE PERMANENTLY IDENTIFIED PER THE FOLLOWING IDENTIFIER LABEL

YEAR WEEK
 TYCO PART NO. DATE CODE (e.g. 0106)
 XXXXXXXX-X XXXX

△ MOUNTING FLANGES ACCEPT #6 SCREWS. (USER SUPPLIED)

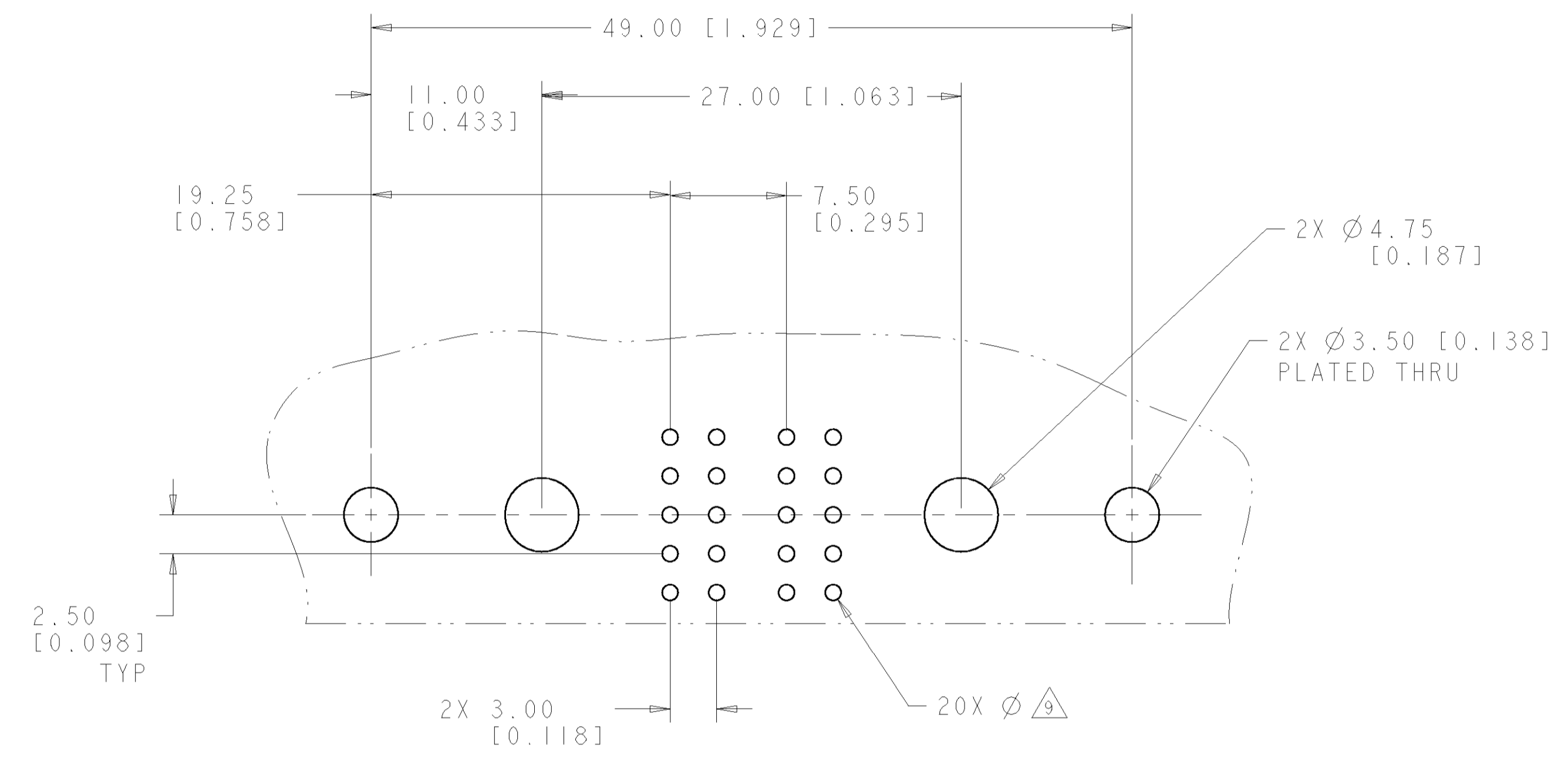


ELCON FLATPAQ

AMP 4895 REV 31MAR2006
 Pro/ENGINEER DRAWING

DIMENSIONS: mm [INCHES]		TOLERANCES UNLESS OTHERWISE SPECIFIED:		DWN B. GRZYBOWSKI 01DEC06		Ech P. DAMATO 01DEC06		APVD S. FLICKINGER 01DEC06		NAME SOCKET CONNECTOR STRAIGHT, SOLDER TAILS FLATPAQ	
0 PLC	±	1 PLC	±.5 [0.020]	SIZE	CAGE CODE	DRAWING NO	RESTRICTED TO	tyco Electronics Tyco Electronics Harrisburg, PA 17105-3608			
2 PLC	±.5 [0.020]	3 PLC	±.25 [0.010]	A100779		C=1926311		SCALE 2:1 SHEET 1 OF 3 REV A			
4 PLC	±	ANGLES	±.5	CUSTOMER DRAWING							

LOC	DIST	REVISIONS			
P	LTR	DESCRIPTION	DATE	DWN	APVD
GP	00	SEE SHEET 1	-	-	-



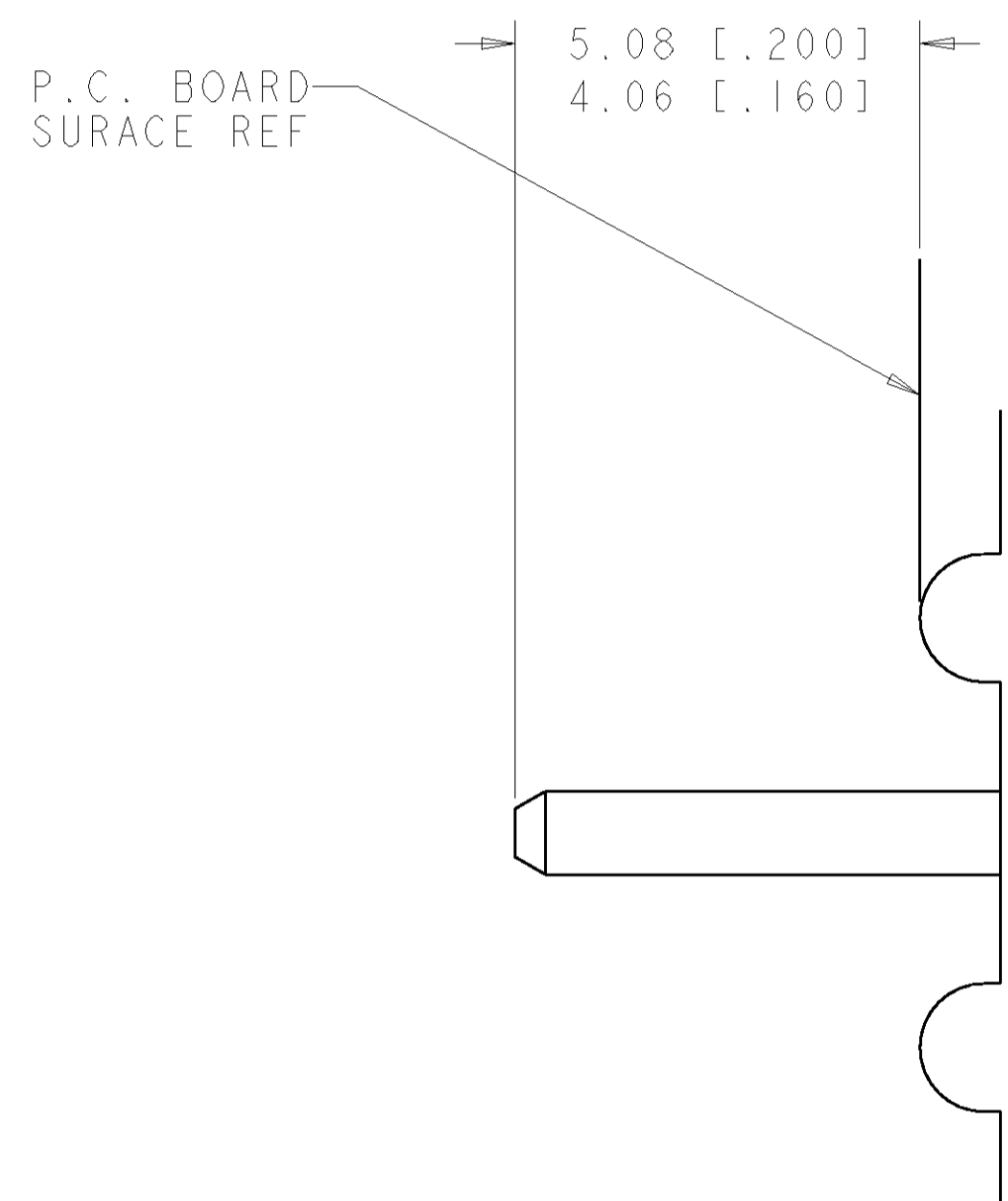
PRINTED CIRCUIT LAYOUT
 COMPONENT SIDE

CONNECTOR	CATALOG MODULE #	QTY	SIZE NO.	CONTACT QTY	MATING PIN	MAX. CURRENT (PER CONTACT)	CONTACT SPACING	VOLTAGE RATING
SOCKET	FP100	2	8	4	1.25 X 7.00 [.049 X .276]	35 amps	7.50 [0.295]	250 VOLTS
	FP515	2	ACTIVE STRAIGHT GUIDE PIN					
	FP500	1	MOUNTING FLANGE, LEFT					
	FP501	1	MOUNTING FLANGE, RIGHT					

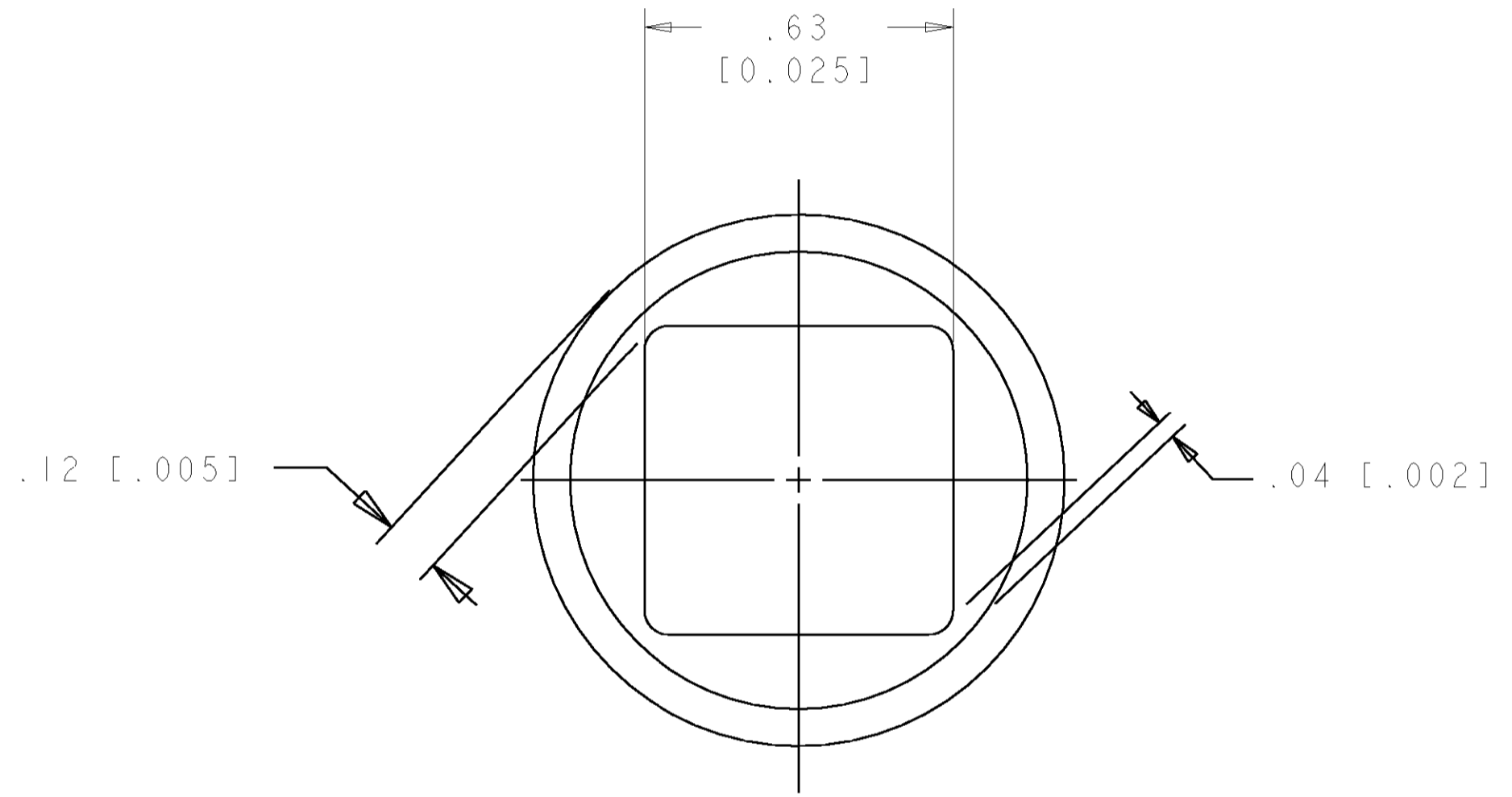
ELCON FLATPAQ

<small>THE DIMENSIONS OF CONNECTORS SPECIFIED FOR THIS DRAWING ARE OBSERVATIONS. THE DIMENSIONS TO BE USED FOR THE DESIGN AND CONSTRUCTION ORGANIZATION SHALL BE CONTACTED FOR THE LATEST VERSION.</small>		DWN: B. GRZYBOWSKI 01DEC06 ENR: P. DAMATO 01DEC06 APVD: S. FLICKINGER 01DEC06	tyco Electronics Tyco Electronics Harrisburg, PA 17105-3608
DIMENSIONS: mm [INCHES]	TOLERANCES UNLESS OTHERWISE SPECIFIED: 0 PLC ± 1 PLC ±.5 (.020) 2 PLC ±.25 (.010) 3 PLC ± 4 PLC ± ANGLES ±.5	NAME: SOCKET CONNECTOR STRAIGHT, SOLDER TAILS FLATPAQ PRODUCT SPEC: APPLICATION SPEC: WEIGHT: FINISH:	SIZE: A 00779 C=1926311 SCALE: 2:1 SHEET 2 OF 3 REV A
MATERIAL: -		CUSTOMER DRAWING	

LOC	DIST	REVISIONS			
P	LTR	DESCRIPTION	DATE	DWN	APVD
-	-	SEE SHEET 1	-	-	-



8. SOLDER PIN DETAIL
SCALE 10 : 1



9 SOLDER TERMINATION AREA
 SCALE 40:1
 RECOMMENDED PRINTED CIRCUIT SOLDER HOLE
 FINISHED HOLE: $\varnothing 1.02 [0.040] \pm .08 [0.003]$
 DRILLED HOLE: $\varnothing 1.15 [0.0453] \pm .013 [0.0005]$
 COPPER PLATE: .025 [.0010] MIN
 TIN PLATE: .008 [.0003] MIN. (PER SURFACE)

ELCON FLATPAQ

<small>THIS DRAWING IS UNPUBLISHED. RELEASED FOR PUBLICATION. ALL RIGHTS RESERVED. THIS DRAWING IS THE PROPERTY OF TYCO ELECTRONICS CORPORATION. IT IS TO BE USED ONLY FOR THE PURPOSES AND ORGANIZATION SPECIFIED BY CONTRACT FOR THE CLIENT'S POSITION.</small>		DWN B. GRZYBOWSKI 01DEC06 CHK P. DAMATO 01DEC06 APVD S. FLICKINGER 01DEC06	tyco Electronics Tyco Electronics Harrisburg, PA 17105-3608
DIMENSIONS: mm [INCHES]	TOLERANCES UNLESS OTHERWISE SPECIFIED: 0 PLC ± 1 PLC ±.5 [.020] 2 PLC ±.25 [.010] 3 PLC ± 4 PLC ± ANGLES ±.5	NAME SOCKET CONNECTOR STRAIGHT, SOLDER TAILS FLATPAQ	SIZE CAGE CODE DRAWING NO A 100779 C=1926311
MATERIAL	FINISH	WEIGHT	RESTRICTED TO
-	-	-	-
CUSTOMER DRAWING		SCALE 2:1	SHEET 3 OF 3 REV A