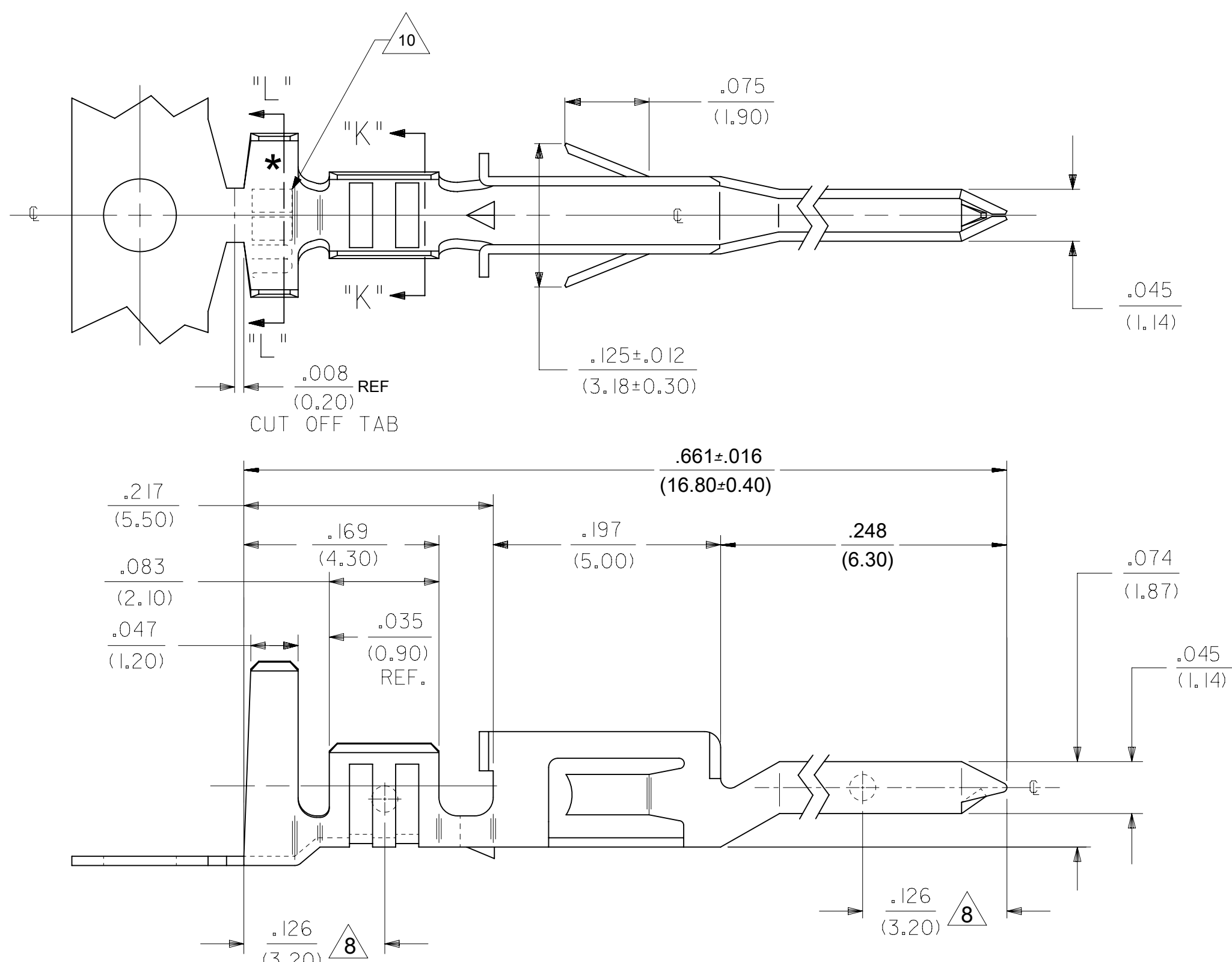
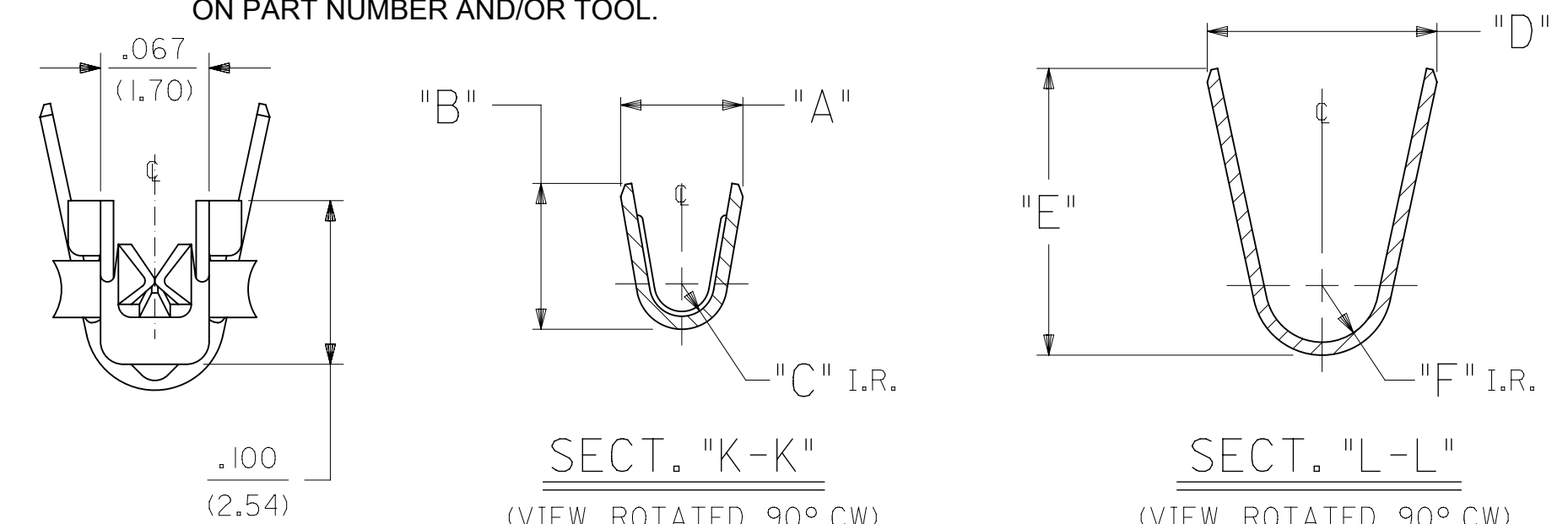


ITEM NO.	FORM	WIRE GAGE	RANGE OF INSULATION DIA.	DIM. "A"	DIM. "B"	DIM. "C"	DIM. "D"	DIM. "E"	DIM. "F"	FINISH (SEE NOTE 2)
46012-1141	CHAIN	18-20 GA.	.051-.122 (1.30-3.10)	.075±.012 (1.90±.30)	.091±.016 (2.30±.40)	.020 (.50)	.142±.012 (3.60±.30)	.177±.016 (4.50±.40)	.035 (.90)	FINISH 1 - BRIGHT TIN OVER NICKEL
46012-1142	LOOSE									
46012-3141	CHAIN	16 GA.	.122 (3.10) MAX.	.091±.012 (2.30±.30)	.106±.016 (2.70±.40)	.024 (.60)	.142±.012 (3.60±.30)	.177±.016 (4.50±.40)	.035 (.90)	
46012-3142	LOOSE									
46012-1241	CHAIN	18-20 GA.	.051-.122 (1.30-3.10)	.075±.012 (1.90±.30)	.091±.016 (2.30±.40)	.020 (.50)	.142±.012 (3.60±.30)	.177±.016 (4.50±.40)	.035 (.90)	FINISH 2 - SEL. GOLD AND SEL. MATTE TIN OVER NICKEL
46012-1242	LOOSE									
46012-3241	CHAIN	16 GA.	.122 (3.10) MAX.	.091±.012 (2.30±.30)	.106±.016 (2.70±.40)	.024 (.60)	.142±.012 (3.60±.30)	.177±.016 (4.50±.40)	.035 (.90)	
46012-3242	LOOSE									



- NOTES:**
- MATERIAL:**  
COPPER ALLOY
  - FINISH:**  
1= .000100/(0.00254) MIN. BRIGHT TIN OVER .000050/(0.00127) MIN NICKEL OVERALL.  
2= .000030/(.00076) MIN SELECT GOLD IN CONTACT AREA AND .000100/(0.00254) MIN SELECT MATTE TIN IN CRIMP AREA OVER .000050/(0.00127) MIN NICKEL OVERALL.  
GOLD PLATING RECOMMENDED FOR APPLICATIONS WHERE FRETTING CORROSION IS A CONCERN.
  - PRODUCT SPECIFICATION:** PS-45750-001
  - PACKAGING SPECIFICATION:** PK-46012-001 FOR CHAIN TERMINALS  
PK-5556-003 FOR LOOSE TERMINALS.
  - TERMINAL MATES WITH FEMALE TERMINAL SERIES 45750 AND IS FOR USE WITH MOLEX PLUG HOUSINGS 5559, 42475, 43770 AND 30068.**
  - THIS TERMINAL IS DESIGNED FOR SINGLE WIRE CRIMPING.**
  - WHEN TERMINALS ARE INSTALLED IN THE HOUSINGS, THE WIRES ARE TO BE DRESSED IN SUCH A MANNER TO ALLOW THE TERMINALS TO FLOAT FREELY IN THE POCKETS.**
  - MEASURING POINT FOR PLATING THICKNESS.**
  - PART CONFORMS TO CLASS "B" REQUIREMENTS OF COSMETIC SPECIFICATION PS-45499-002.**
  - TEXT ON PART IS FOR REFERENCE ONLY. TEXT AND TEXT LOCATION MAY VARY DEPENDING ON PART NUMBER AND/OR TOOL.**



**LEGEND:**

**46012 - \* \* 4 \***

BASE NO. ————

WIRE GAGE ————

1= 18-20  
3= 16

PLATING ————

1= TIN  
2= GOLD

CHAIN OR LOOSE ————

1= CHAIN  
2= LOOSE

QUALITY SYMBOLS	THIS DRAWING CONTAINS INFORMATION THAT IS PROPRIETARY TO MOLEX ELECTRONIC TECHNOLOGIES, LLC AND SHOULD NOT BE USED WITHOUT WRITTEN PERMISSION			
	ADD NOTE 9 & 10 EC NO: 120853 DRWN: BAPPELDORN CHKD: JBELL REV / APPR: F/SMITH	DIMENSION UNITS <b>IN/MM</b> SCALE <b>10:1</b>	<b>molex®</b>  TERM., MALE, CRIMP MINI-FIT JR. HCS PLUS SERIES	
GENERAL TOLERANCES (UNLESS SPECIFIED) 4 PLACES ±     ± 3 PLACES ±     ± 0.01 2 PLACES ± 0.25 ± 0.015 1 PLACES ± 0.38 ± 0 PLACES ±     ±	DRWN BY: TGREGORI DATE: 2005/07/28 CHK'D BY: GPOLGAR DATE: 2005/07/28 APPR BY: JCOMERCI DATE: 2005/07/28	PRODUCT CUSTOMER DRAWING SERIES: 46012 MATERIAL NUMBER: SEE CHART CUSTOMER: GENERAL MARKET		
ANGULAR TOL = 0.5 DRAFT WHERE APPLICABLE MUST REMAIN WITHIN DIMENSIONS	DRAWING SIZE: <b>C</b> THIRD ANGLE PROJECTION	DOCUMENT NUMBER: SD-46012-001 DOC TYPE: PSD DOC PART: 001 SHEET NUMBER: 1 OF 1		